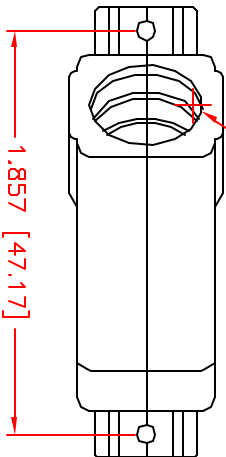
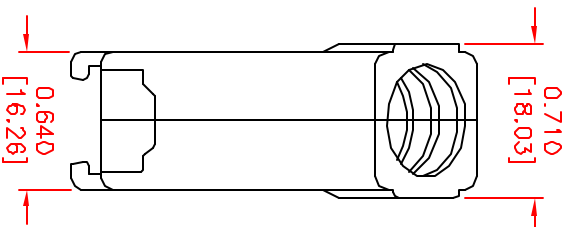
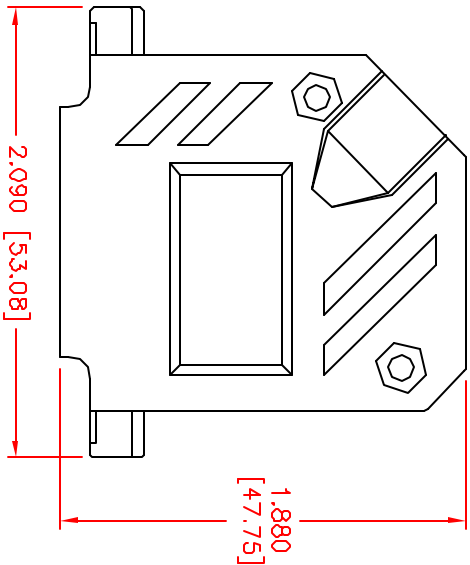




.522 [13.26]



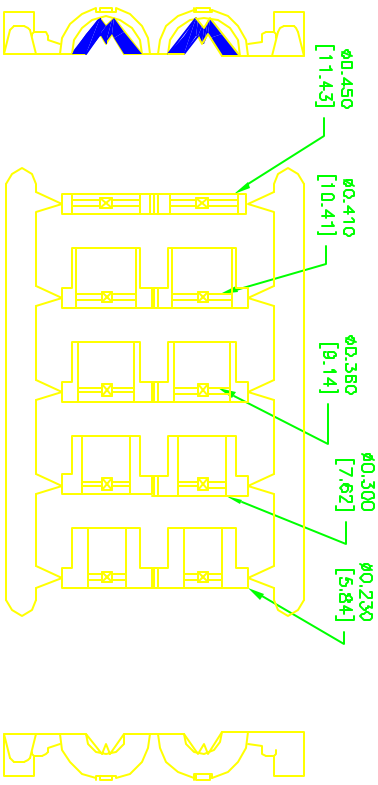
- Connector Cover
- Material: Thermoplastic UL94V-0
 - Color: Gray
 - Jacket Insert Tree
 - Material Polypropylene Homopolymer
 - Color: Black



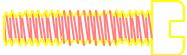
REVISIONS

DCP #	REV	DESCRIPTION	DRAWN	DATE	CHECKED	DATE	APPROVD	DATE
17789	A	RELEASED	DCM	2/28/07	JIN	2/12/08	JIN	2/12/08

DOC. NO. SPC-FD05 * Effective: 7/8/02 * DCP No: 1398



Jacket Insert Tree



#4-40 x 7/6", fillister head
machine screw, C.R. Steel,
Zinc Plated
(Hexavalent Chromium Free)
(2 pcs)



#4-40 x 1/2", fillister head captive
screw, C.R. Steel, Zinc Plated
(Hexavalent Chromium Free)
(2 pcs)



#4-40, #2 Blank Hex Nut,
1010 Steel, Zinc Plated
(Hexavalent Chromium Free)
(2 pcs)



#4 Saddle Washer, C.R. Steel,
Zinc Plated
(Hexavalent Chromium Free)
(2 pcs)

TOLERANCES:

DISCLAIMER:
ALL STATEMENTS AND TECHNICAL INFORMATION CONTAINED
HEREIN ARE BASED UPON INFORMATION AND/OR TESTS WE
BELIEVE TO BE ACCURATE AND RELIABLE. SINCE
CONDITIONS OF USE ARE BEYOND OUR CONTROL, THE
USER SHALL DETERMINE THE SUITABILITY OF THE PRODUCT
FOR THE INTENDED USE AND ASSUME ALL RISK AND
LIABILITY WHATSOEVER IN CONNECTION THEREWITH.

UNLESS OTHERWISE
SPECIFIED,
DIMENSIONS ARE
FOR REFERENCE
PURPOSES ONLY.

DRAWN BY:

Don McVicker

DATE:

2/28/07

CHECKED BY:

Jason Nash

DATE:

2/12/08

APPROVED BY:

Jason Nash

DRAWING TITLE:

2-PIECE 45° D-Sub Cover, 25 Contacts

SIZE DWG. NO.

A

SPC14939

ELECTRONIC FILE

80K5372.dwg

REV

A

SCALE: NTS

U.O.M.: INCHES [mm]

SHEET: 1 OF 1