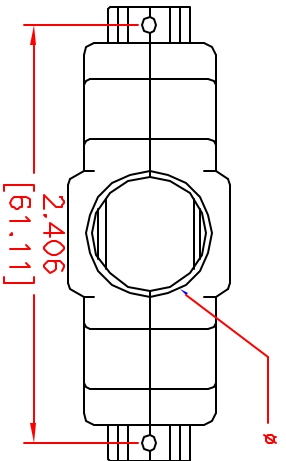


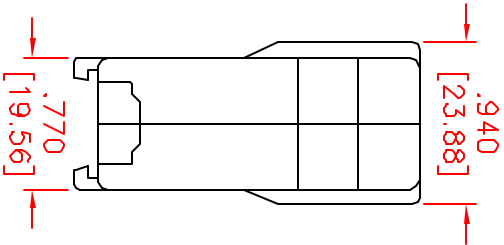
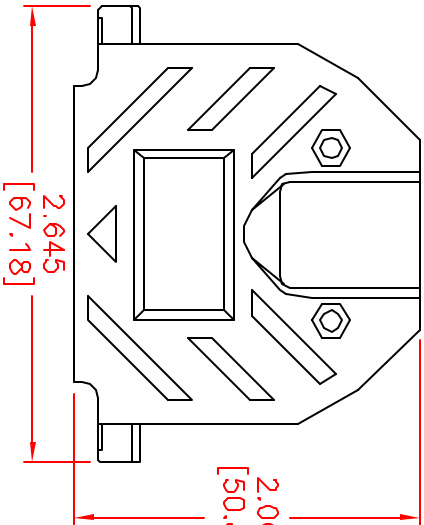
ALL RIGHTS RESERVED. NO PORTION OF THIS PUBLICATION, WHETHER IN WHOLE OR IN PART, CAN BE REPRODUCED WITHOUT THE EXPRESS WRITTEN CONSENT OF SPC TECHNOLOGY.

SPC-F005.DWG

REVISIONS			DOC. NO. SPC-F005 * Effective: 7/8/02 * DCP No: 1398					
DCP #	REV	DESCRIPTION	DRAWN	DATE	CHECKD	DATE	APPRVD	DATE
		NOT Released	JWM	11/20/07	JLN	2/12/08	JLN	2/12/08



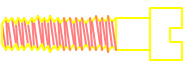
Connector Cover  
- Material: ABS Compound, UL94-HB  
- Nickel Plated



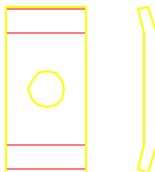
#4-40 x 7/64", fillister head  
machine screw, C1018 Steel,  
Zinc Plated  
(Hexavalent Chromium Free)  
(2 pcs)



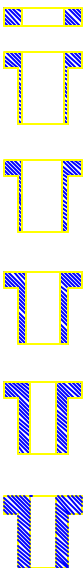
#4-40, #2 Blank Hex Nut,  
C1010 Steel, Zinc Plated  
(Hexavalent Chromium Free)  
(2 pcs)



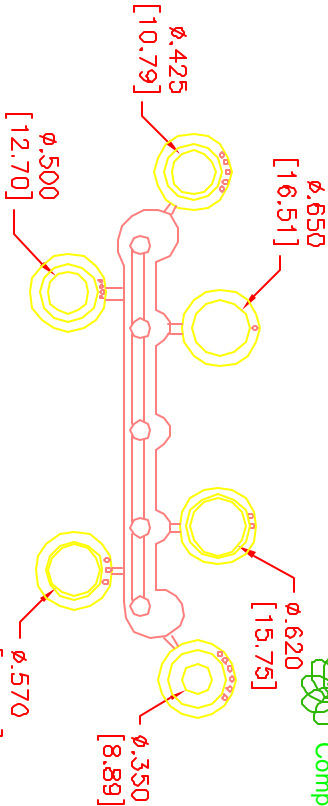
#4-40 x 1/2", fillister head captive  
screw, C1018 Steel, Zinc Plated  
(Hexavalent Chromium Free)  
(2 pcs)



#4 Saddle Washer, C.R. Steel,  
Zinc Plated  
(Hexavalent Chromium Free)  
(2 pcs)



Compression Inserts  
- Material: Thermoplastic, Black  
- Durometer: 75±5 Type A per ASTM D2240



DISCLAIMER:  
ALL STATEMENTS AND TECHNICAL INFORMATION CONTAINED  
HEREIN ARE BASED UPON INFORMATION AND/OR TESTS WE  
BELIEVE TO BE ACCURATE AND RELIABLE. SINCE  
CONDITIONS OF USE ARE BEYOND OUR CONTROL, THE  
USER SHALL DETERMINE THE SUITABILITY OF THE PRODUCT  
FOR THE INTENDED USE AND ASSUME ALL RISK AND  
LIABILITY WHATSOEVER IN CONNECTION THEREWITH.

TOLERANCES:  
UNLESS OTHERWISE  
SPECIFIED,  
DIMENSIONS ARE  
FOR REFERENCE  
PURPOSES ONLY.

DRAWN BY:	DATE:	DRAWING TITLE:			
Jeff Mevicker	11/20/07	STRAIGHT METALLIZED-PLASTIC COVER, 50 CONTACTS			
CHECKED BY:	DATE:	SIZE	DWG. NO.	ELECTRONIC FILE	REV
Jason Nash	2/12/08	A	SPC14962	80K5383.dwg	
APPROVED BY:	DATE:	SCALE:	NTS	U.O.M.: INCHES [mm]	SHEET: 1 OF 1
Jason Nash	2/12/08				