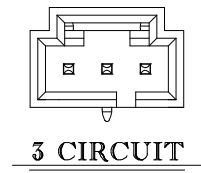
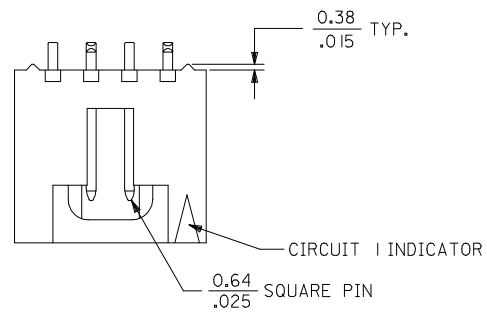


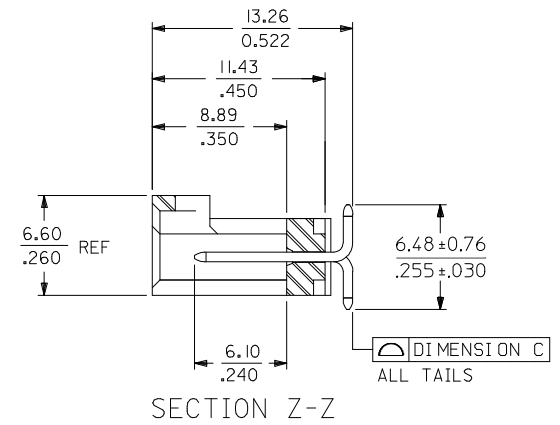
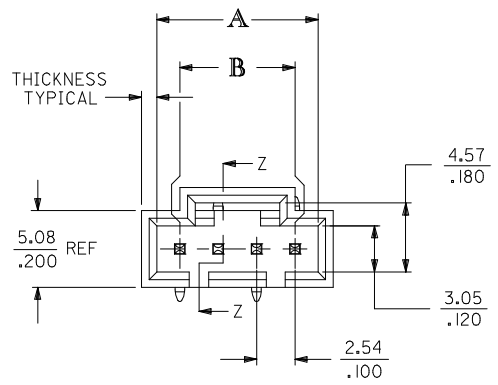
CKT. SIZE	DIMENSION A		DIMENSION B		DIMENSION C	
	MM	IN.	MM	IN.	MM	IN.
3	8.13	.320	5.08	.200	0.15	.006
4	10.67	.420	7.62	.300	0.15	.006
5	13.21	.520	10.16	.400	0.15	.006
6	15.75	.620	12.70	.500	0.15	.006
7	18.29	.720	15.24	.600	0.15	.006
8	20.83	.820	17.78	.700	0.15	.006
9	23.37	.920	20.32	.800	0.15	.006
10	25.91	1.020	22.86	.900	0.15	.006
11	28.45	1.120	25.40	1.000	0.15	.006
12	30.99	1.220	27.94	1.100	0.15	.006
13	33.53	1.320	30.48	1.200	0.15	.006
14	36.07	1.420	33.02	1.300	0.15	.006
15	38.61	1.520	35.56	1.400	0.15	.006
16	41.15	1.620	38.10	1.500	0.15	.006
17	43.69	1.720	40.64	1.600	0.15	.006
18	46.23	1.820	43.18	1.700	0.15	.006
19	48.77	1.920	45.72	1.800	0.15	.006
20	51.31	2.020	48.26	1.900	0.18	.007
21	53.85	2.120	50.80	2.000	0.18	.007
22	56.39	2.220	53.34	2.100	0.18	.007
23	58.93	2.320	55.88	2.200	0.18	.007
24	61.47	2.420	58.42	2.300	0.18	.007
25	64.01	2.520	60.96	2.400	0.18	.007



3 CIRCUIT



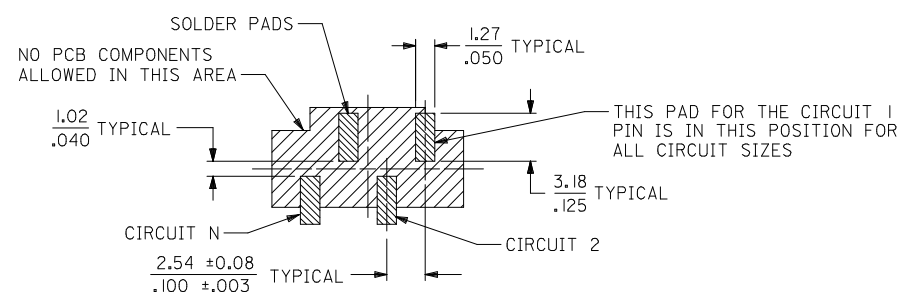
1.02
.040 WALL THICKNESS
TYPICAL



4 CIRCUIT SHOWN

NOTES:

1. HEADER MATERIAL: GLASS FILLED POLYESTER;
UL94V-0; COLOR: BLACK
PIN MATERIAL: PHOSPHOR BRONZE
2. HEADER TO BE USED WITH OPTION "G" 70400 AND 70430
SERIES SL CONNECTORS.
3. REFER TO MOLEX PRODUCT SPECIFICATION PS-70541.
4. PRODUCT PACKAGED PER PK-70873-003.
5. PLATINGS (SEE CHART ON SHEET 2):
TIN - .000150 MINIMUM TIN PLATE
OVER NICKEL PLATE.
15 GOLD - .000015 MINIMUM GOLD PLATE IN SELECT AREA,
.000075 MINIMUM TIN PLATE IN SELECT AREA,
OVER NICKEL PLATE OVERALL.
30 GOLD - .000030 MINIMUM GOLD PLATE IN SELECT AREA,
.000075 MINIMUM TIN PLATE IN SELECT AREA,
OVER NICKEL PLATE OVERALL.



RECOMMENDED PC BOARD LAYOUT

CORRECT DIM ERROR EC NO: UCP2014-1669 TDRWNG:MORGAN 2013/10/16 CHKD:MPOFF 2013/10/16 APPR:SMILLER 2013/10/18	QUALITY SYMBOLS	DESCRIPTION	GENERAL TOLERANCES (UNLESS SPECIFIED)		DIMENSION STYLE		SCALE	DESIGN UNITS	THIRD ANGLE PROJECTION			
					MM/IN		4:1	INCH				
				mm	INCH	DRAWN BY	DATE	SALES ASSY, SL VERTICAL HEADER, SMT W/ LATCH				
			4 PLACES	±---	±---	BBARKER	03/06/18					
			3 PLACES	±---	±.010	CHECKED BY	DATE					
			2 PLACES	±0.25	±---	DMORGAN	03/06/18	molex				
			1 PLACE	±---	±---	APPROVED BY	DATE					
			0 PLACE	±---	±---	SMILLER	2013/07/26	SD-74099-001				
			ANGULAR ±1/2°		MATERIAL NO.		DOCUMENT NO.					
			DRAFT WHERE APPLICABLE		SEE TABLE				1 OF 2			
MUST REMAIN WITHIN DIMENSIONS		SIZE	THIS DRAWING CONTAINS INFORMATION THAT IS PROPRIETARY TO MOLEX INCORPORATED AND SHOULD NOT BE USED WITHOUT WRITTEN PERMISSION									

	13	12	11	10	9	8	7	6	5	4	3	2	1		
J	CIRCUIT SIZE	ASSEMBLY ITEM NUMBER 74099	PLATING SEE NOTE 5	MATING END PLATING	P.C. BOARD END PLATING										J
				TYPE	TYPE										
	3-25	-0003-0025	TIN	TIN	TIN										
I	3-24	-1003-1024	15 GOLD	GOLD	TIN										I
	3-24	-2003-2024	30 GOLD	GOLD	TIN										
H															H
G														G	
	CIRCUIT SIZE	ASSEMBLY ITEM NUMBER	ASSEMBLY ITEM NUMBER	ASSEMBLY ITEM NUMBER	ASSEMBLY ITEM NUMBER	ASSEMBLY ITEM NUMBER	ASSEMBLY ITEM NUMBER	ASSEMBLY ITEM NUMBER							
	3	74099-0003	74099-1003	74099-2003											
	4	74099-0004	74099-1004	74099-2004											
	5	74099-0005	74099-1005	74099-2005											
	6	74099-0006	74099-1006	74099-2006											
F	7	74099-0007	74099-1007	74099-2007											
	8	74099-0008	74099-1008	74099-2008										F	
	9	74099-0009	74099-1009	74099-2009											
	10	74099-0010	74099-1010	74099-2010											
	11	74099-0011	74099-1011	74099-2011											
	12	74099-0012	74099-1012	74099-2012											
E	13	74099-0013	74099-1013	74099-2013											
	14	74099-0014	74099-1014	74099-2014											
	15	74099-0015	74099-1015	74099-2015										E	
	16	74099-0016	74099-1016	74099-2016											
	17	74099-0017	74099-1017	74099-2017											
	18	74099-0018	74099-1018	74099-2018											
	19	74099-0019	74099-1019	74099-2019											
D	20	74099-0020	74099-1020	74099-2020											
	21	74099-0021	74099-1021	74099-2021										D	
	22	74099-0022	74099-1022	74099-2022											
	23	74099-0023	74099-1023	74099-2023											
	24	74099-0024	74099-1024	74099-2024											
	25	74099-0025													
C														C	
B														B	
A														A	
<div><div><div>SEE SHEET 1</div><div>EC NO: UCP2014-1669</div><div>DRWN:DMORGAN 2013/10/16</div><div>CHKD:MP0FF 2013/10/16</div><div>APPR:SMILLER 2013/10/18</div></div><div>REV</div><div>DESCRIPTION</div><div>QUALITY SYMBOLS</div><div><div>GENERAL TOLERANCES (UNLESS SPECIFIED)</div><div><div><div>mm</div><div>INCH</div></div><div>4 PLACES ± --- ± ---</div><div>3 PLACES ± --- ± .010</div><div>2 PLACES ± 0.25 ± ---</div><div>1 PLACE ± --- ± ---</div><div>0 PLACE ± --- ± ---</div></div><div>ANGULAR ±1/2°</div><div>DRAFT WHERE APPLICABLE MUST REMAIN WITHIN DIMENSIONS</div></div><div><div>DIMENSION STYLE</div><div>MM/IN</div><div><div>DRAWN BY</div><div>DATE</div></div><div><div>CHECKED BY</div><div>DATE</div></div><div><div>APPROVED BY</div><div>DATE</div></div><div>MATERIAL NO.</div><div>DOCUMENT NO.</div><div>SHEET NO.</div></div><div><div>THIRD ANGLE PROJECTION</div><div>SALES ASSY, SL VERTICAL HEADER, SMT W/ LATCH</div><div>molex</div><div>SD-74099-001</div><div>2 OF 2</div></div><div><div>THIS DRAWING CONTAINS INFORMATION THAT IS PROPRIETARY TO MOLEX INCORPORATED AND SHOULD NOT BE USED WITHOUT WRITTEN PERMISSION</div></div></div>															
tb_frame_C_P_AM_T Rev. G 2012/01/11	12	11	10	9	8	7	6	5	4	3	2	1			

13			12		11		10		9		8		7		6		5		4		3		2		1																											
J	CIRCUIT SIZE	ASSEMBLY ITEM NUMBER 74099	PLATING SEE NOTE 6	MATING END PLATING		P.C. BOARD END PLATING																			J																											
				TYPE		TYPE																																														
	3-25	-0003-0025	TIN	TIN		TIN																																														
I	3-24	-1003-1024	15 GOLD	GOLD		TIN																			I																											
	3-24	-2003-2024	30 GOLD	GOLD		TIN																																														
H																									H																											
G																										G																										
	CIRCUIT SIZE	ASSEMBLY ITEM NUMBER	ASSEMBLY ITEM NUMBER	ASSEMBLY ITEM NUMBER	ASSEMBLY ITEM NUMBER	ASSEMBLY ITEM NUMBER	ASSEMBLY ITEM NUMBER																																													
	3	74099-0003	74099-1003	74099-2003																																																
	4	74099-0004	74099-1004	74099-2004																																																
	5	74099-0005	74099-1005	74099-2005																																																
	6	74099-0006	74099-1006	74099-2006																																																
F	7	74099-0007	74099-1007	74099-2007																						F																										
	8	74099-0008	74099-1008	74099-2008																																																
	9	74099-0009	74099-1009	74099-2009																																																
	10	74099-0010	74099-1010	74099-2010																																																
	11	74099-0011	74099-1011	74099-2011																																																
	12	74099-0012	74099-1012	74099-2012																																																
E	13	74099-0013	74099-1013	74099-2013																						E																										
	14	74099-0014	74099-1014	74099-2014																																																
	15	74099-0015	74099-1015	74099-2015																																																
	16	74099-0016	74099-1016	74099-2016																																																
	17	74099-0017	74099-1017	74099-2017																																																
	18	74099-0018	74099-1018	74099-2018																																																
D	19	74099-0019	74099-1019	74099-2019																						D																										
	20	74099-0020	74099-1020	74099-2020																																																
	21	74099-0021	74099-1021	74099-2021																																																
	22	74099-0022	74099-1022	74099-2022																																																
	23	74099-0023	74099-1023	74099-2023																																																
	24	74099-0024	74099-1024	74099-2024																																																
C	25	74099-0025																								C																										
B																										B																										
A																										A																										
<div><div><div><div><div>ADD 74099-0025</div><div>EC NO: UCP2007-1071</div><div>DRWN:MS1BARRA 2006/11/13</div><div>CHKD:BBARKER 2006/11/17</div><div>APPR:SMILLER 2006/11/20</div></div><div>REV</div><div>DESCRIPTION</div></div><div><div>QUALITY SYMBOLS</div><div>▼=0</div><div>▽=0</div></div><div><div>GENERAL TOLERANCES (UNLESS SPECIFIED)</div><div><table><tr><td></td><td>mm</td><td>INCH</td></tr><tr><td>4 PLACES</td><td>± .---</td><td>± .---</td></tr><tr><td>3 PLACES</td><td>± .---</td><td>± .010</td></tr><tr><td>2 PLACES</td><td>± 0.25</td><td>± .---</td></tr><tr><td>1 PLACE</td><td>± .---</td><td>± .---</td></tr></table></div><div>ANGULAR ±1/2°</div><div>DRAFT WHERE APPLICABLE MUST REMAIN WITHIN DIMENSIONS</div></div><div><div>DIMENSION STYLE</div><div>MM/IN</div><div><table><tr><td>DRAWN BY</td><td>DATE</td></tr><tr><td>BBARKER</td><td>01/11/29</td></tr><tr><td>CHECKED BY</td><td>DATE</td></tr><tr><td>DMORGAN</td><td>01/11/29</td></tr><tr><td>APPROVED BY</td><td>DATE</td></tr><tr><td>SMILLER</td><td>01/11/29</td></tr></table></div><div><div><div>SIZE</div><div>C</div></div><div>THIS DRAWING CONTAINS INFORMATION THAT IS PROPRIETARY TO MOLEX INCORPORATED AND SHOULD NOT BE USED WITHOUT WRITTEN PERMISSION</div></div></div><div><div>SCALE</div><div>---</div><div>DESIGN UNITS</div><div>INCH</div><div><div>THIRD ANGLE PROJECTION</div></div><div><div>TITLE</div><div>SALES ASSY, SL VERTICAL HEADER, SMT W/ LATCH</div></div><div><div>MATERIAL NO.</div><div>SEE TABLE</div><div>DOCUMENT NO.</div><div>SD-74099-001</div><div>SHEET NO.</div><div>2 OF 2</div></div></div></div></div>																											mm	INCH	4 PLACES	± .---	± .---	3 PLACES	± .---	± .010	2 PLACES	± 0.25	± .---	1 PLACE	± .---	± .---	DRAWN BY	DATE	BBARKER	01/11/29	CHECKED BY	DATE	DMORGAN	01/11/29	APPROVED BY	DATE	SMILLER	01/11/29
	mm	INCH																																																		
4 PLACES	± .---	± .---																																																		
3 PLACES	± .---	± .010																																																		
2 PLACES	± 0.25	± .---																																																		
1 PLACE	± .---	± .---																																																		
DRAWN BY	DATE																																																			
BBARKER	01/11/29																																																			
CHECKED BY	DATE																																																			
DMORGAN	01/11/29																																																			
APPROVED BY	DATE																																																			
SMILLER	01/11/29																																																			
Ib_frame_C_P_ME_T Rev. D 2004/04/02			12	11	10	9	8	7	6	5	4	3	2	1																																						