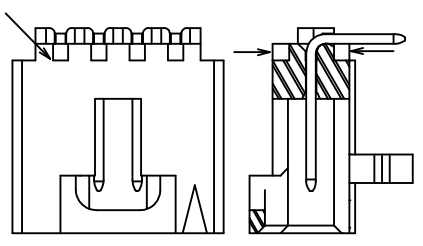
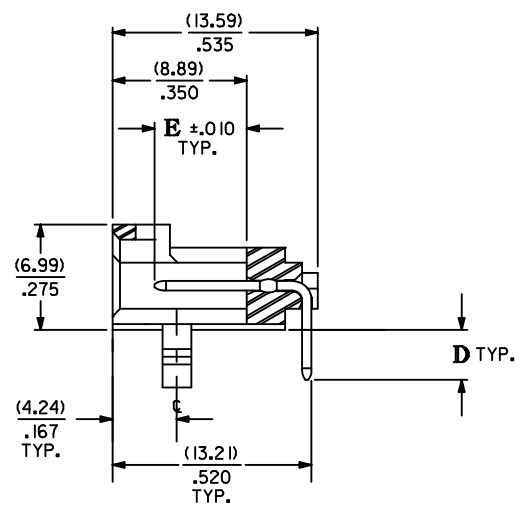
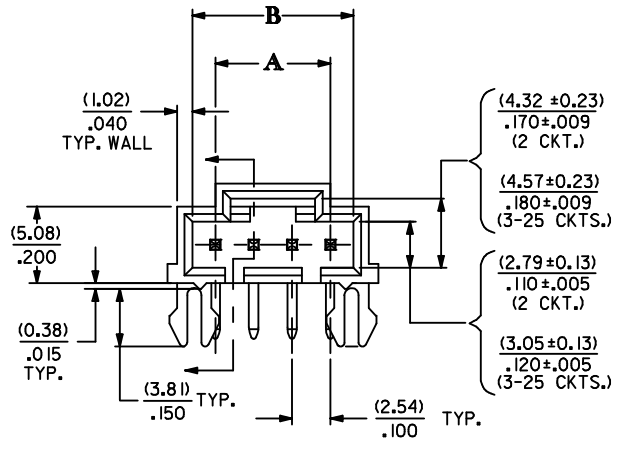


**ALTERNATIVE CORING
MANUFACTURER'S OPTION**



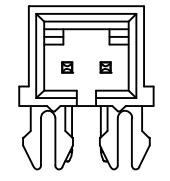
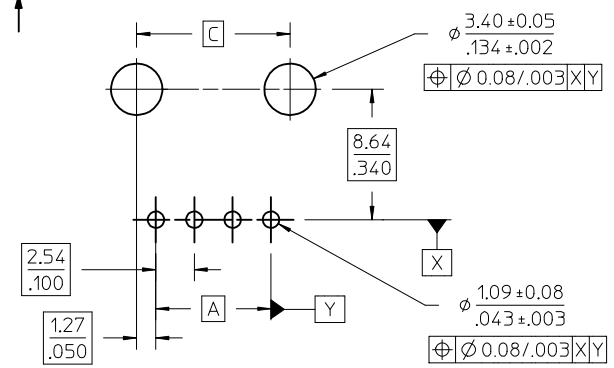
CKT. SIZE	DIM. "A"		DIM. "B"		DIM. "C"		DIM. "Z"	
	MM	IN.	MM	IN.	MM	IN.	MM	IN.
2	2.54	.100	5.33	.210	5.08	.200	8.64	.340
3	5.08	.200	8.13	.320	7.62	.300	11.43	.450
4	7.62	.300	10.67	.420	10.16	.400	13.97	.550
5	10.16	.400	13.21	.520	12.70	.500	16.51	.650
6	12.70	.500	15.75	.620	15.24	.600	19.05	.750
7	15.24	.600	18.29	.720	17.78	.700	21.59	.850
8	17.78	.700	20.83	.820	20.32	.800	24.13	.950
9	20.32	.800	23.37	.920	22.86	.900	26.67	1.050
10	22.86	.900	25.91	1.020	25.40	1.000	29.21	1.150
11	25.40	1.000	28.45	1.120	27.94	1.100	31.75	1.250
12	27.94	1.100	30.99	1.220	30.48	1.200	34.29	1.350
13	30.48	1.200	33.53	1.320	33.02	1.300	36.83	1.450
14	33.02	1.300	36.07	1.420	35.56	1.400	39.37	1.550
15	35.56	1.400	38.61	1.520	38.10	1.500	41.91	1.650
16	38.10	1.500	41.15	1.620	40.64	1.600	44.45	1.750
17	40.64	1.600	43.69	1.720	43.18	1.700	46.99	1.850
18	43.18	1.700	46.23	1.820	45.72	1.800	49.53	1.950
19	45.72	1.800	48.77	1.920	48.26	1.900	52.07	2.050
20	48.26	1.900	51.31	2.020	50.80	2.000	54.61	2.150
21	50.80	2.000	53.85	2.120	53.34	2.100	57.15	2.250
22	53.34	2.100	56.39	2.220	55.88	2.200	59.69	2.350
23	55.88	2.200	58.93	2.320	58.42	2.300	62.23	2.450
24	58.42	2.300	61.47	2.420	60.96	2.400	64.77	2.650
25	60.96	2.400	64.01	2.520	63.50	2.500	67.31	2.750



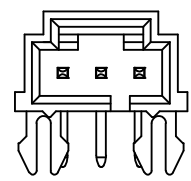
- NOTES:
1. MATERIAL:
HOUSING: GLASS FILLED POLYESTER; UL94V-0, COLOR: BLACK
PIN MATERIAL: PHOSPHOR BRONZE
 2. HEADER TO BE USED WITH OPTION 'G' 70400 AND 70430
SERIES SL CONNECTORS
 3. REFER TO MOLEX PRODUCT SPECIFICATION PS-70541
 4. STANDARD PACKAGING PER PK-70873-0015

- PLATING CODES:
- BRIGHT TIN - 150 MICROINCHES MINIMUM BRIGHT TIN PLATE
OVER 50 MICROINCHES MINIMUM NICKEL PLATE
- MATTE TIN - 150 MICROINCHES MINIMUM MATTE TIN PLATE
OVER 50 MICROINCHES MINIMUM NICKEL PLATE
- 15 GOLD - 15 MICROINCHES MINIMUM GOLD PLATE IN SELECT AREA
75 MICROINCHES MINIMUM MATTE TIN PLATE IN SELECT AREA
OVER 50 MICROINCHES MINIMUM NICKEL PLATE OVERALL
- 30 GOLD - 30 MICROINCHES MINIMUM GOLD PLATE IN SELECT AREA
75 MICROINCHES MINIMUM MATTE TIN PLATE IN SELECT AREA
OVER 50 MICROINCHES MINIMUM NICKEL PLATE OVERALL


RECOMMENDED P.C. BOARD LAYOUT
(FOR USE WITH (1.57)/.062 THICK BOARD)



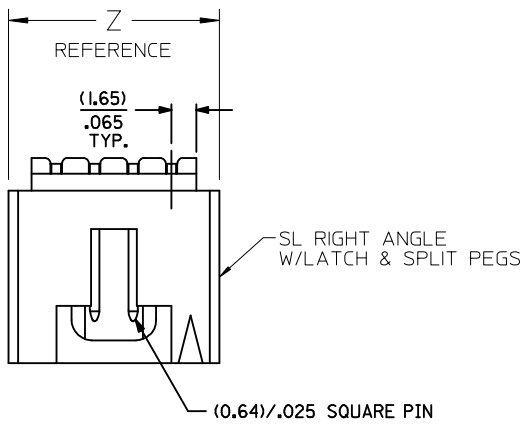
2 CIRCUIT



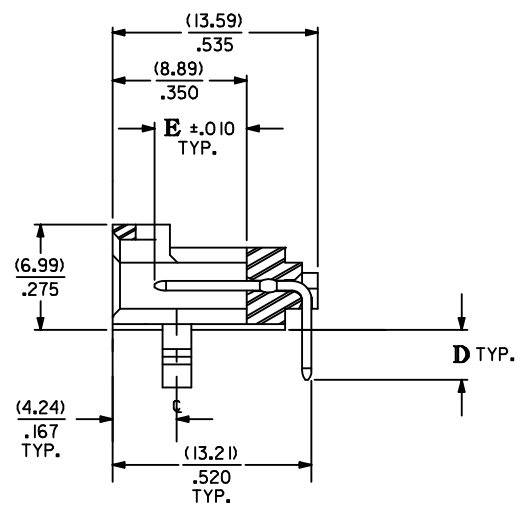
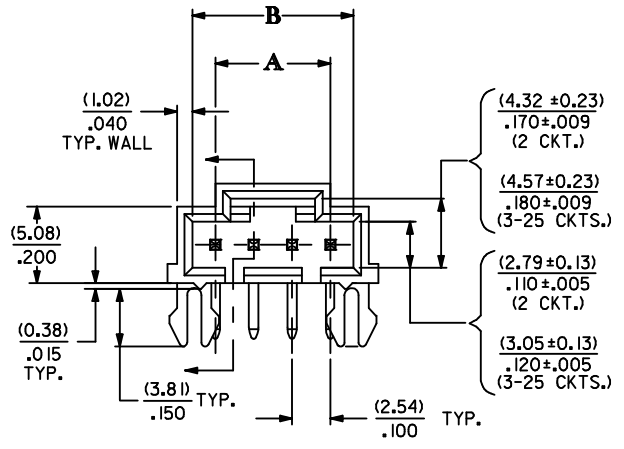
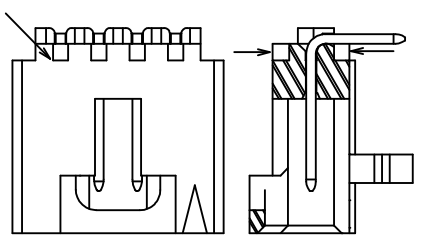
3 CIRCUIT

CORRECT 30 GOLD DES EC NO: UCP2017-2006 DRWN:KSM/EC 2017/03/14 CHKD: APPR:FSM/JTH 2017/03/14 REV	DESCRIPTION	QUALITY SYMBOLS ▽=0 ▽=0 ▽=0	GENERAL TOLERANCES (UNLESS SPECIFIED)			DIMENSION STYLE MM/IN		SCALE	DESIGN UNITS INCH	 THIRD ANGLE PROJECTION		
			mm		INCH		DRAWN BY DATE		TITLE SL RIGHT ANGLE HEADER W/LATCH & SPLIT PEGS (2.54)/.100 CENTERS molex			
			4 PLACES ± --- ± ---		AAB 1993/05/13							
			3 PLACES ± --- ± .005		CHECKED BY DATE							
			2 PLACES ± 0.13 ± .010		AAB 1993/05/13		APPROVED BY DATE		DOCUMENT NO. SDA-70551-**** SHEET NO. 1 OF 2			
			1 PLACE ± 0.25 ± ---		SMILLER 2010/11/23							
			0 PLACE ± --- ± ---		MATERIAL NO.							
			ANGULAR ±1/2°		SEE TABLE							
			DRAFT WHERE APPLICABLE MUST REMAIN WITHIN DIMENSIONS			SIZE C	THIS DRAWING CONTAINS INFORMATION THAT IS PROPRIETARY TO MOLEX INCORPORATED AND SHOULD NOT BE USED WITHOUT WRITTEN PERMISSION					

		13		12		11		10		9		8		7		6		5		4		3		2		1			
J		CIRCUIT SIZE		ENGINEERING NUMBER A-70551				D		E		MATING AREA FINISH		PC TAIL AREA FINISH															
		2-25		-0001-0024				(3.30) .130		(6.10) .240		BRIGHT TIN		BRIGHT TIN															
I		2-25		-0036-0059				(3.30) .130		(6.10) .240		15 GOLD		TIN															
		2-25		-0071-0094				(3.30) .130		(6.10) .240		30 GOLD		TIN															
		2 & 4		-3001,-3003				(3.30) .130		(6.10) .240		MATTE TIN		MATTE TIN															
H																													
		CKTS	MATERIAL NO	MATERIAL NO	MATERIAL NO	MATERIAL NO																							CKTS
G		02	70551-0001	70551-0036	70551-0071	70551-3001																						02	
		03	70551-0002	70551-0037	70551-0072																							03	
		04	70551-0003	70551-0038	70551-0073	70551-3003																						04	
		05	70551-0004	70551-0039	70551-0074																							05	
		06	70551-0005	70551-0040	70551-0075																							06	
		07	70551-0006	70551-0041	70551-0076																							07	
F		08	70551-0007	70551-0042	70551-0077																						08		
		09	70551-0008	70551-0043	70551-0078																						09		
		10	70551-0009	70551-0044	70551-0079																						10		
		11	70551-0010	70551-0045	70551-0080																						11		
		12	70551-0011	70551-0046	70551-0081																						12		
		13	70551-0012	70551-0047	70551-0082																						13		
E		14	70551-0013	70551-0048	70551-0083																					14			
		15	70551-0014	70551-0049	70551-0084																					15			
		16	70551-0015	70551-0050	70551-0085																					16			
		17	70551-0016	70551-0051	70551-0086																					17			
		18	70551-0017	70551-0052	70551-0087																					18			
		19	70551-0018	70551-0053	70551-0088																						19		
D		20	70551-0019	70551-0054	70551-0089																					20			
		21	70551-0020	70551-0055	70551-0090																					21			
		22	70551-0021	70551-0056	70551-0091																					22			
		23	70551-0022	70551-0057	70551-0092																					23			
		24	70551-0023	70551-0058	70551-0093																					24			
		25	70551-0024	70551-0059	70551-0094																						25		
C																													
B																													
A																													



**ALTERNATIVE CORING
MANUFACTURER'S OPTION**

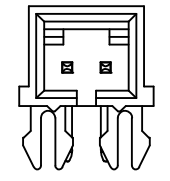
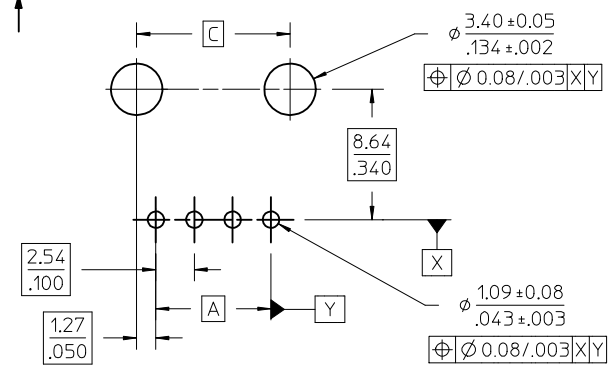


CKT. SIZE	DIM. "A"		DIM. "B"		DIM. "C"		DIM. "Z"	
	MM	IN.	MM	IN.	MM	IN.	MM	IN.
2	2.54	.100	5.33	.210	5.08	.200	8.64	.340
3	5.08	.200	8.13	.320	7.62	.300	11.43	.450
4	7.62	.300	10.67	.420	10.16	.400	13.97	.550
5	10.16	.400	13.21	.520	12.70	.500	16.51	.650
6	12.70	.500	15.75	.620	15.24	.600	19.05	.750
7	15.24	.600	18.29	.720	17.78	.700	21.59	.850
8	17.78	.700	20.83	.820	20.32	.800	24.13	.950
9	20.32	.800	23.37	.920	22.86	.900	26.67	1.050
10	22.86	.900	25.91	1.020	25.40	1.000	29.21	1.150
11	25.40	1.000	28.45	1.120	27.94	1.100	31.75	1.250
12	27.94	1.100	30.99	1.220	30.48	1.200	34.29	1.350
13	30.48	1.200	33.53	1.320	33.02	1.300	36.83	1.450
14	33.02	1.300	36.07	1.420	35.56	1.400	39.37	1.550
15	35.56	1.400	38.61	1.520	38.10	1.500	41.91	1.650
16	38.10	1.500	41.15	1.620	40.64	1.600	44.45	1.750
17	40.64	1.600	43.69	1.720	43.18	1.700	46.99	1.850
18	43.18	1.700	46.23	1.820	45.72	1.800	49.53	1.950
19	45.72	1.800	48.77	1.920	48.26	1.900	52.07	2.050
20	48.26	1.900	51.31	2.020	50.80	2.000	54.61	2.150
21	50.80	2.000	53.85	2.120	53.34	2.100	57.15	2.250
22	53.34	2.100	56.39	2.220	55.88	2.200	59.69	2.350
23	55.88	2.200	58.93	2.320	58.42	2.300	62.23	2.450
24	58.42	2.300	61.47	2.420	60.96	2.400	64.77	2.650
25	60.96	2.400	64.01	2.520	63.50	2.500	67.31	2.750

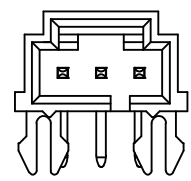
- NOTES:
1. MATERIAL:
HOUSING: GLASS FILLED POLYESTER; UL94V-0, COLOR: BLACK
PIN MATERIAL: PHOSPHOR BRONZE
 2. HEADER TO BE USED WITH OPTION 'G' 70400 AND 70430
SERIES SL CONNECTORS
 3. REFER TO MOLEX PRODUCT SPECIFICATION PS-70541
 4. STANDARD PACKAGING PER PK-70873-0015

- PLATING CODES:
- BRIGHT TIN - 150 MICROINCHES MINIMUM BRIGHT TIN PLATE
OVER 50 MICROINCHES MINIMUM NICKEL PLATE
- MATTE TIN - 150 MICROINCHES MINIMUM MATTE TIN PLATE
OVER 50 MICROINCHES MINIMUM NICKEL PLATE
- 15 GOLD - 15 MICROINCHES MINIMUM GOLD PLATE IN SELECT AREA
75 MICROINCHES MINIMUM MATTE TIN PLATE IN SELECT AREA
OVER 50 MICROINCHES MINIMUM NICKEL PLATE OVERALL
- 30 GOLD - 30 MICROINCHES MINIMUM GOLD PLATE IN SELECT AREA
75 MICROINCHES MINIMUM MATTE TIN PLATE IN SELECT AREA
OVER 50 MICROINCHES MINIMUM NICKEL PLATE OVERALL


RECOMMENDED P.C. BOARD LAYOUT
(FOR USE WITH (1.57)/.062 THICK BOARD)



2 CIRCUIT



3 CIRCUIT

CORRECT 30 GOLD DES EC NO: UCP2017-2006 DRWN:KSM/EC 2017/03/14 CHKD: APPR:FSM/JTH 2017/03/14 REV	DESCRIPTION	QUALITY SYMBOLS ▽=0 ▽=0 ▽=0	GENERAL TOLERANCES (UNLESS SPECIFIED)			DIMENSION STYLE MM/IN		SCALE	DESIGN UNITS INCH	 THIRD ANGLE PROJECTION	
			mm		INCH		DRAWN BY	DATE	TITLE SL RIGHT ANGLE HEADER W/LATCH & SPLIT PEGS (2.54)/.100 CENTERS molex DOCUMENT NO. SDA-70551-**** SHEET NO. 1 OF 2		
			4 PLACES ± --- ± ---		AAB		1993/05/13				
			3 PLACES ± --- ± .005		CHECKED BY		DATE				
			2 PLACES ± 0.13 ± .010		AAB		1993/05/13				
			1 PLACE ± 0.25 ± ---		APPROVED BY		DATE				
			0 PLACE ± --- ± ---		SMILLER		2010/11/23				
			ANGULAR ±1/2°		MATERIAL NO.						
			DRAFT WHERE APPLICABLE MUST REMAIN WITHIN DIMENSIONS		SIZE C		SEE TABLE				
							THIS DRAWING CONTAINS INFORMATION THAT IS PROPRIETARY TO MOLEX INCORPORATED AND SHOULD NOT BE USED WITHOUT WRITTEN PERMISSION				

[illegible]