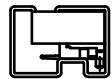
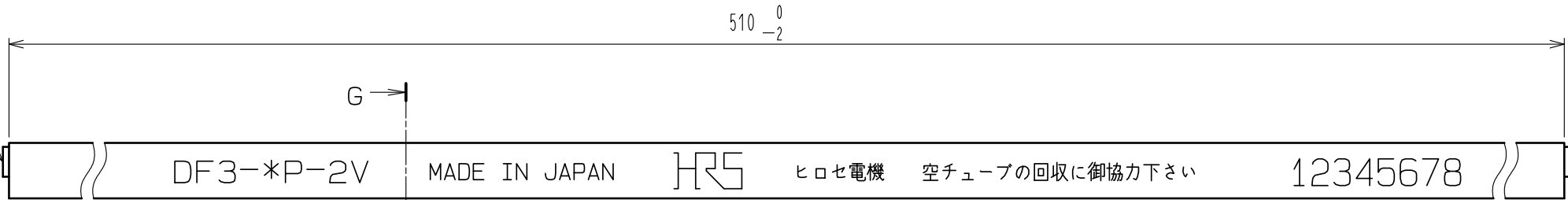


Aug.1.2018 Copyright 2018 HIROSE ELECTRIC CO., LTD. All Rights Reserved.
In case that the application demands a high level of reliability, such as automotive,
please contact a company representative for further information.

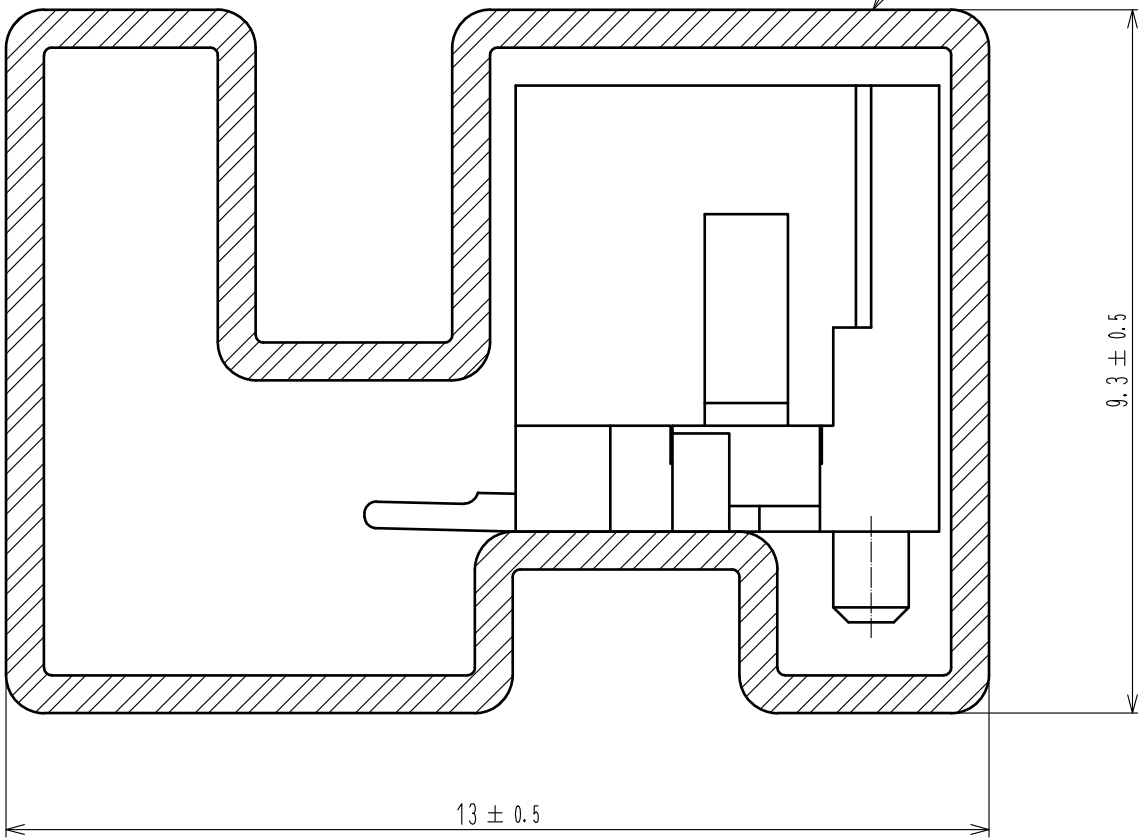


5



G-G (10 : 1)

4



- Notes 4. Number of connectors per a magazine case shall be in accordance with the list.
5. These connectors shall be on saled in accordance with the multiple quantity on the list.

Part No.	Code No.	Number of connectors
DF3E- 2P-2V(24)	CL543-0357-0-24	41
DF3E- 3P-2V(24)	CL543-0358-0-24	34
DF3E- 4P-2V(24)	CL543-0359-0-24	30
DF3E- 5P-2V(24)	CL543-0360-0-24	26
DF3E- 6P-2V(24)	CL543-0361-0-24	23
DF3E- 7P-2V(24)	CL543-0362-0-24	21
DF3E- 8P-2V(24)	CL543-0363-0-24	19
DF3E- 9P-2V(24)	CL543-0364-0-24	18
DF3E-10P-2V(24)	CL543-0365-0-24	17
DF3E-11P-2V(24)	—	15
DF3E-12P-2V(24)	CL543-0367-0-24	14
DF3E-13P-2V(24)	—	14
DF3E-14P-2V(24)	—	13
DF3E-15P-2V(24)	—	12

HRS	DRAWING NO.	EDC-367607-24-00	
	PART NO.	DF3E-*P-2V(24)	
	CODE NO.	CL543-	<div><div>2</div><div>2</div></div>