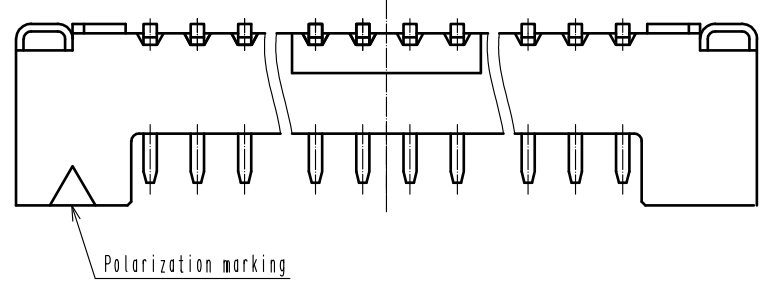
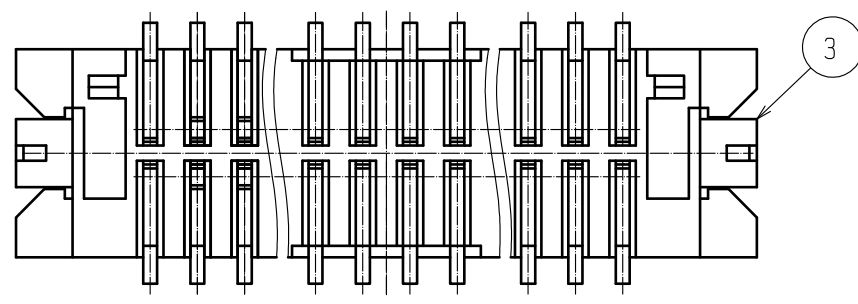
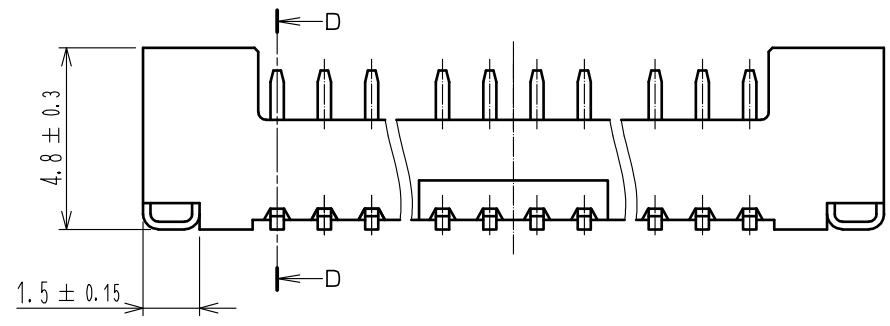
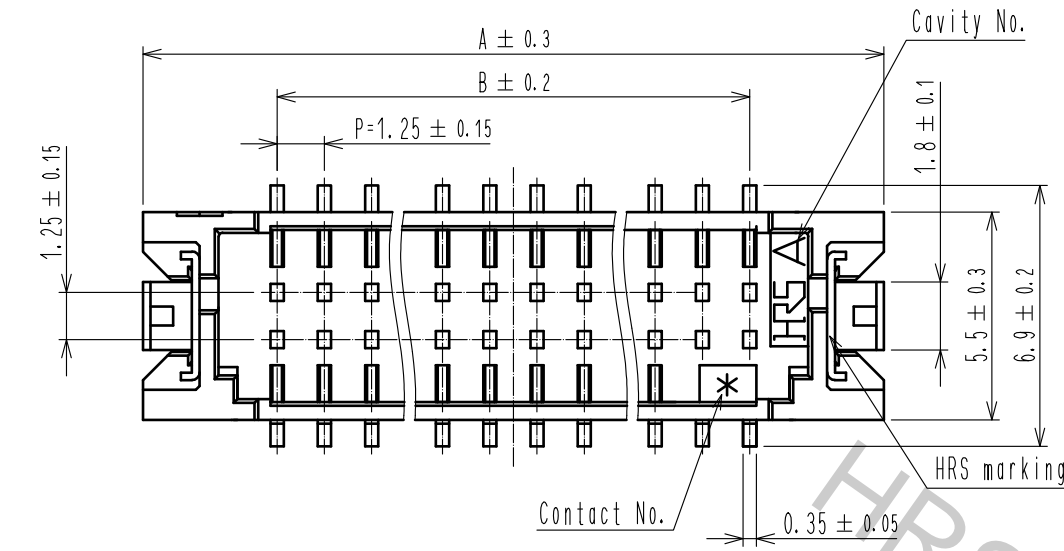
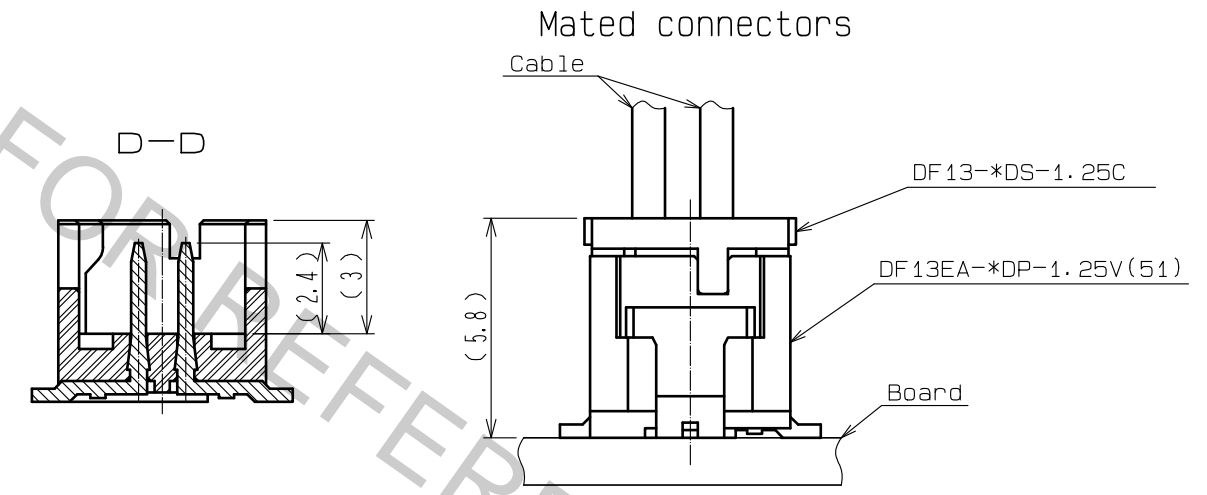
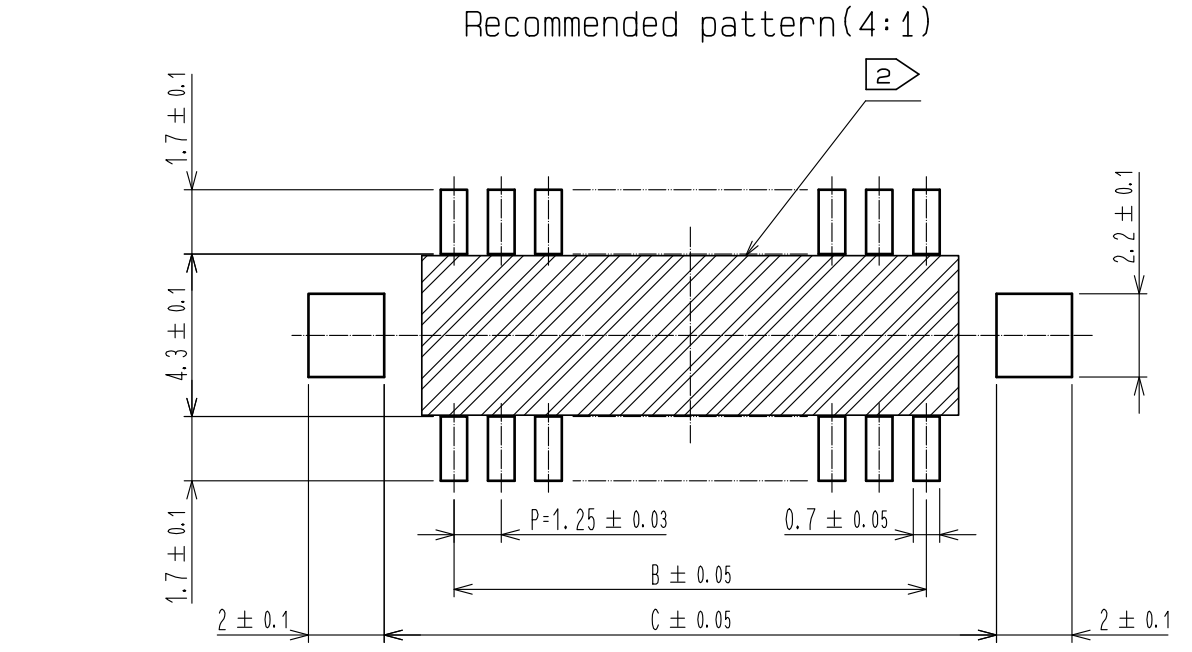
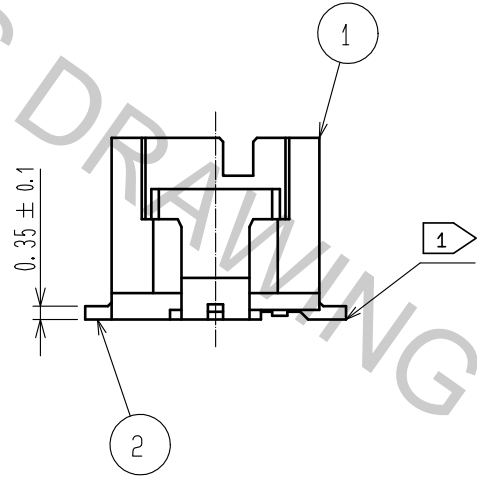


Aug.1.2018 Copyright 2018 HIROSE ELECTRIC CO., LTD. All Rights Reserved.  
In case that the application demands a high level of reliability, such as automotive,  
please contact a company representative for further information.

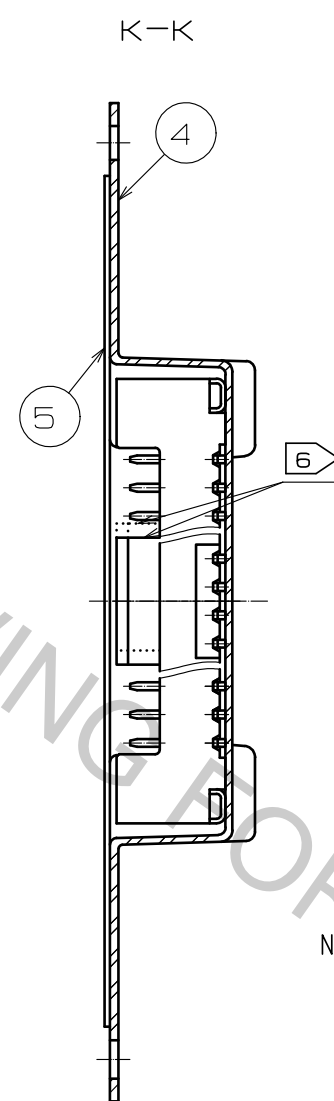
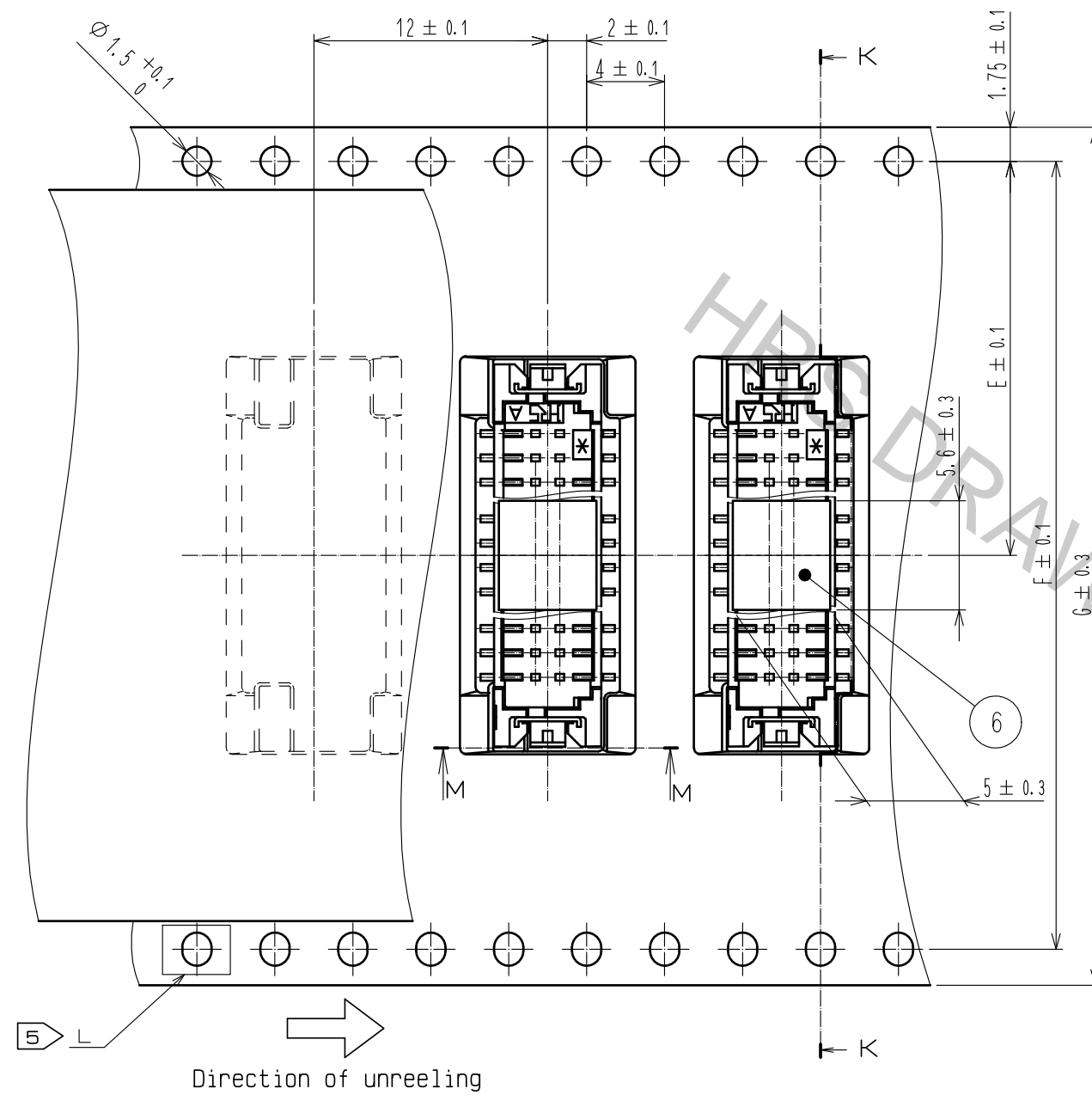


Part No.	Number of Contacts	Code No.	A	B	C
DF13EA-10DP-1.25V(51)	10	CL536-0570-0-51	12.10	5.00	8.70
DF13EA-20DP-1.25V(51)	20	CL536-0571-0-51	18.35	11.25	14.95
DF13EA-30DP-1.25V(51)	30	CL536-0572-0-51	24.60	17.50	21.20
DF13EA-40DP-1.25V(51)	40	CL536-0573-0-51	30.85	23.75	27.45



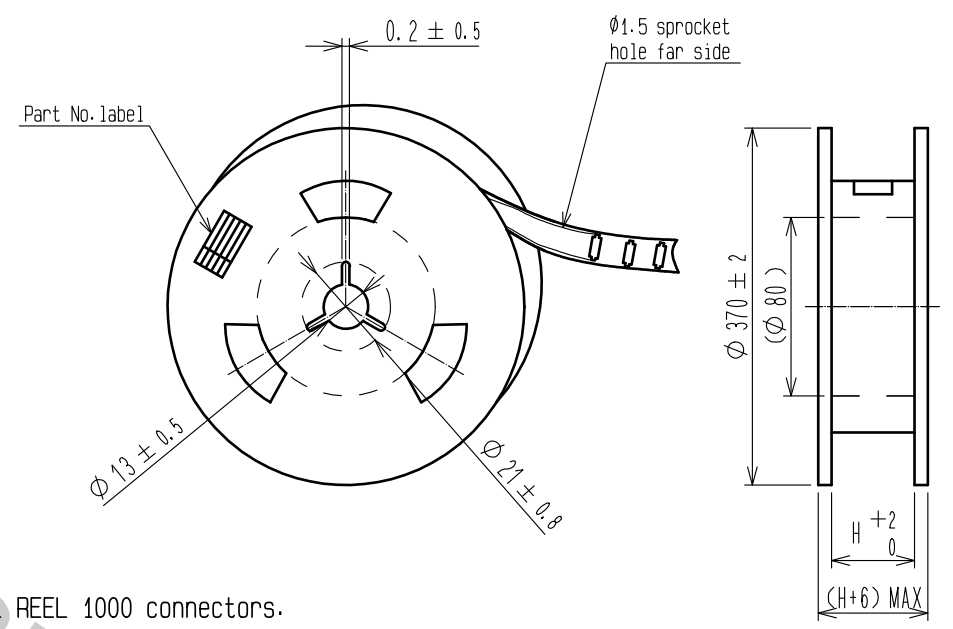
Notes 1 : Lead co-planality include reinforced metal fittings shall be 0.1mm MAX.  
2 If there are pattern and a via hole on part, there is a possibility that it will make contact with the leads.

2	Brass	Contact area:Gold plated 0.2μm min	6	Polyamide	Beige,UL94V-0
		Lead plated:Tin-Copper plated 1μm min	5	Polyester	Clear(Cover tape)
		Under plating:Nickel 1μm min	4	PS	Clear(Embossed carrier tape)
1	Polyamide	Beige,UL94V-0	3	Phosphor bronze	Tin plated 1μm min
NO.	MATERIAL	FINISH , REMARKS	NO.	MATERIAL	FINISH , REMARKS
UNITS mm		SCALE 5 : 1	COUNT 1	DESCRIPTION OF REVISIONS DIS-H-00002149	
HIROSE ELECTRIC CO., LTD.		APPROVED :KI. AKIYAMA	16.01.21	DESIGNED NO.	EDC-367982-51-00
		CHECKED :TS. FUKUSHIMA	16.01.21	PART NO.	DF13EA-*DP-1.25V(51)
		DESIGNED :YK. YAMAGUCHI	16.01.21	CODE NO.	CL536-
		DRAWN :MI. SAKIMURA	16.01.21		
		DESIGNED NO.	16.01.21	CHECKED NO.	16.09.26
		DATE	16.09.26		



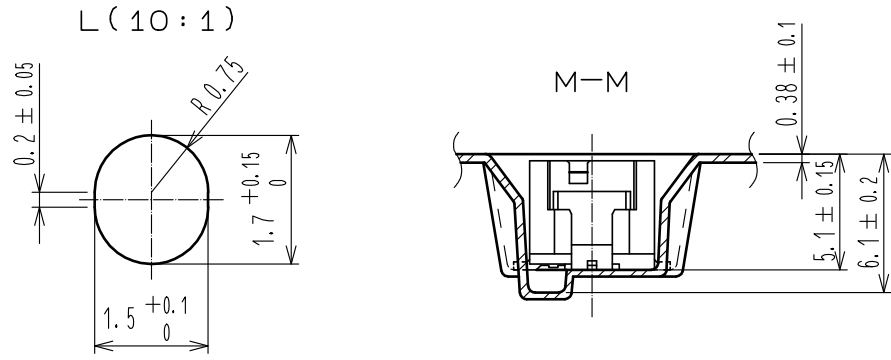
Part No.	Code No.	Number of contacts	E	F	G	H
DF13EA-10DP-1.25V(51)	CL536-0570-0-51	10	11.5	—	24	24.4
DF13EA-20DP-1.25V(51)	CL536-0571-0-51	20	14.2	28.4	32	32.4
DF13EA-30DP-1.25V(51)	CL536-0572-0-51	30	20.2	40.4	44	44.4
DF13EA-40DP-1.25V(51)	CL536-0573-0-51	40	20.2	40.4	44	44.4

Style and dimension of reel



- Notes 3 : 1 REEL 1000 connectors.  
4 : At the beginning of the reel, 30 components shall be empty.  
At the end of the reel, 20 components shall be empty.  
5 When the tape width is 32mm and more over, sprocket holes shall be set on both sides of reel as shown on this drawing.  
6 For 10 and 30 contacts cap shall be at the center of component(shown in drawing with continuous line), for 20 and 40 contacts at the position moved to HRS marking by half pitch(shown in drawing with dotted line).  
7 Detail of part No. label is written in japanese.

7 Detail of Part NO. label



Supplier  
Quantity  
Part No.  
Code No.  
Date of manufactured

生産月日	年 月 日
図番	CL536-*****-51
品番	DF13EA-*DP-1.25V(51)
納入数量	1000K $\square$
納入者	ヒロセ電機(株)

<b>HRS</b>	DRAWING NO.	EDC-367982-51-00
	PART NO.	DF13EA-*DP-1.25V(51)
	CODE NO.	CL536-

2/2