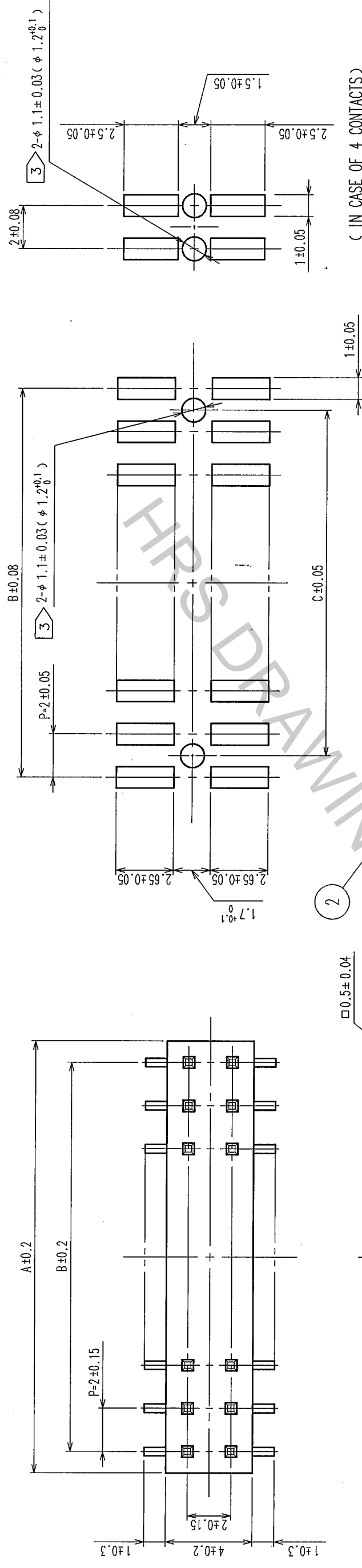

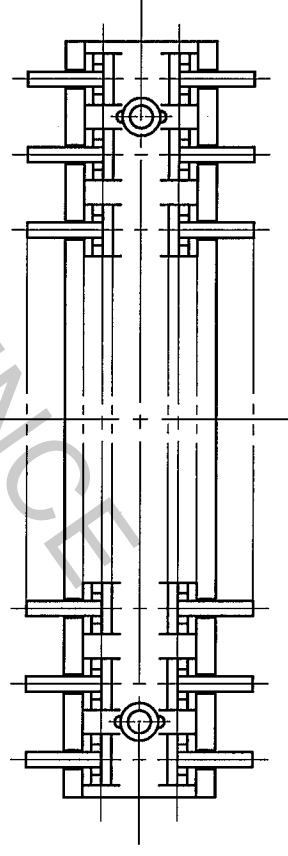
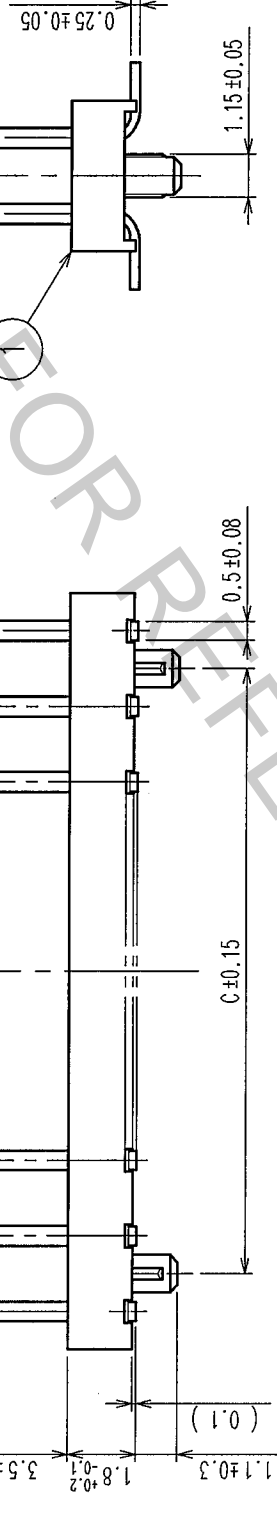


In case that the application demands a high level of reliability, such as automotive, please contact a company representative for further information.

## RECOMMENDED PC BOARD LAYOUT



PART No.	CODE No.		A	B	C
A3A-4PA-2SV(71)	CL621-1040-0-71	4	4	2	2
A3A-6PA-2SV(71)	CL621-1041-3-71	6	6	4	2
A3A-8PA-2SV(71)	CL621-1042-6-71	8	8	6	4
A3A-10PA-2SV(71)	CL621-1043-9-71	10	10	8	6
A3A-12PA-2SV(71)	CL621-1044-1-71	12	12	10	8
A3A-14PA-2SV(71)	CL621-1045-4-71	14	14	12	10
A3A-16PA-2SV(71)	CL621-1046-7-71	16	16	14	12
A3A-20PA-2SV(71)	CL621-1048-2-71	20	20	18	16
A3A-24PA-2SV(71)	CL621-1050-4-71	24	24	22	20
A3A-28PA-2SV(71)	CL621-1052-0-71	28	28	26	24
A3A-32PA-2SV(71)	CL621-1054-5-71	32	32	30	28
A3A-44PA-2SV(71)	CL621-1055-8-71	44	44	42	40
A3A-50PA-2SV(71)	CL621-1056-0-71	50	50	48	46



1	POLYPHENYLENE SULFIDE	LIGHT BROWN / UL94 V-0	2	BRASS	CONTACT AREA: GOLD 0.24 m min.	
				MOUNTING AREA: GOLD FLASH		
				UNDER PLATING: NICKEL 24 m min.		
NO.	MATERIAL	FINISH, REMARKS	NO.	MATERIAL	FINISH, REMARKS	
CODE NO. (OLD)			DRAWN		DESIGNED	CHECKED
			T. NODA		H. Doi	H. Ogawa
			'05.03.30		'05.03.30	'05.03.30
DRAWING NO.		PART NO.		A3A-*PA-2SV(71)		
EDC3-082601-21						
SCALE						
UNITS						
mm						
HRS		HIROSE ELECTRIC CO., LTD		CL621		1/1

3	IN CASE OF THE AUTOMATED MOUNTING, RECOMMENDED HOLE DIAMETER OF BOSS SHALL BE 1.2+0.1-0.1
4	NUMBER OF CONTACT.