



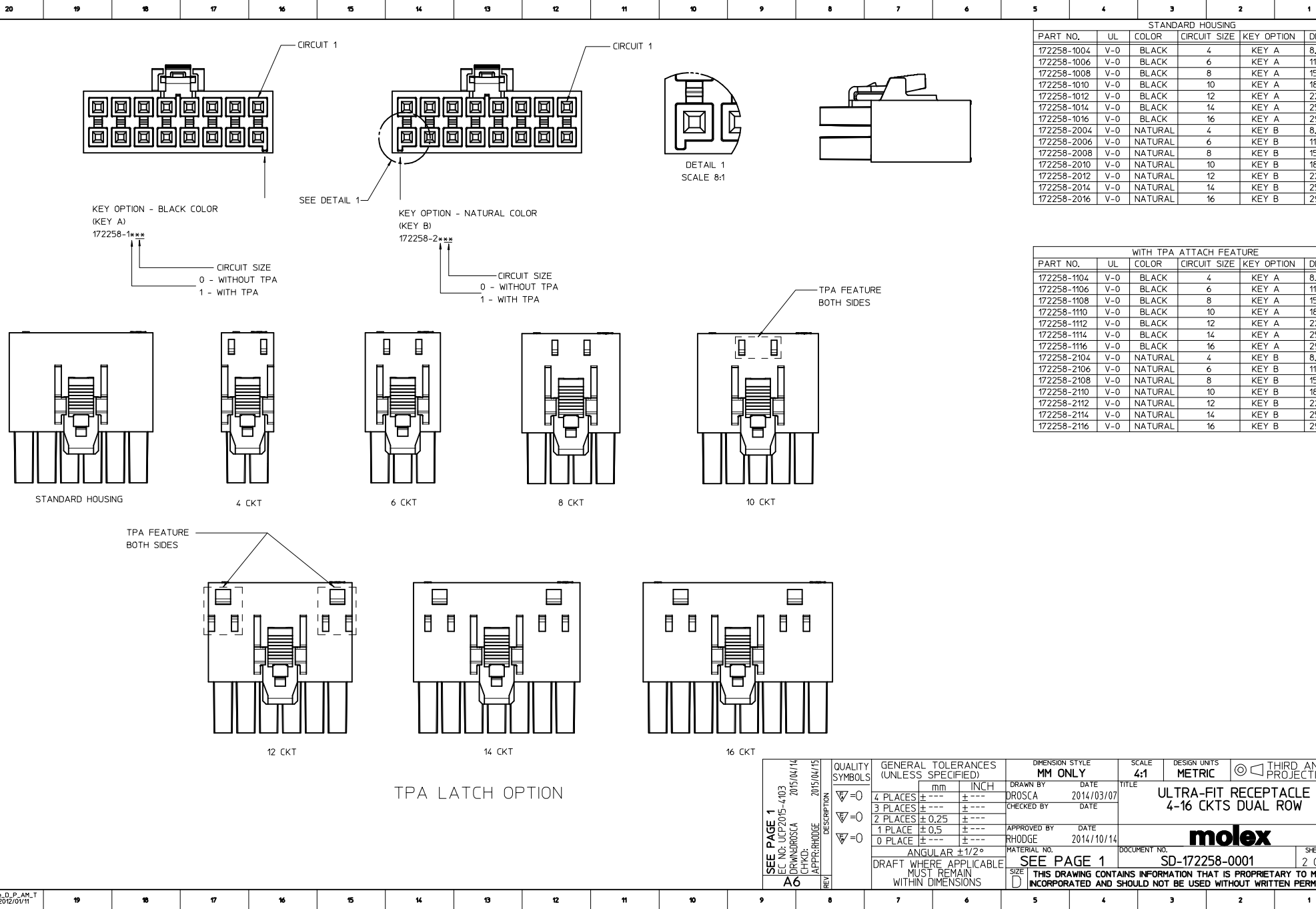


1. MATERIAL :
 - OPTION 1: PA4T NYLON V-0 BLACK
 - OPTION 2: PA4T NYLON V-0 NATURAL
2. PARTS TO BE PACKAGED PER PK-172323-0010
3. PRODUCT SPECIFICATION PS-172323-0001
4. PART MATES WITH MOLEX R/A HEADER ASSEMBLY 172316 AND VERTICAL HEADER ASSEMBLY 172298, 172299 SERIES.
5. TO USE WITH TERMINAL 172253 SERIES
6. TO USE WITH 172264 PART
7. PARTS CONFORM TO CLASS "B" REQUIREMENTS OF COSMETIC SPECIFICATION PS-45499-002
8. APPLICATION SPECIFICATION: AS-172323-0001

<div>X-RELEASE</div> <div>EC NO: UCF2015-4103</div> <div>DRAWN: ROSCA</div> <div>CHKD: APPR: RHODGE</div> <div>A6</div>	2015/04/14	2015/04/15	QUALITY SYMBOLS	GENERAL TOLERANCES (UNLESS SPECIFIED)		DIMENSION STYLE MM ONLY		SCALE 4:1	DESIGN UNITS METRIC	 THIRD ANGLE PROJECTION	
	DESCRIPTION			 =0	<div><div>mm</div><div>INCH</div></div>	DRAWN BY DATE 2014/03/07		TITLE ULTRA-FIT RECEPTACLE 4-16 CKTS DUAL ROW			
				 =0	<div><div>0 PLACES ±</div><div>3 PLACES ±</div><div>2 PLACES ±0.25</div><div>1 PLACE ±0.5</div><div>0 PLACE ±</div></div>	<div><div>±</div><div>±</div><div>±</div><div>±</div><div>±</div></div>	CHECKED BY DATE				
				 =0		APPROVED BY DATE RHODGE 2014/10/14					
					ANGULAR ±1/2°	MATERIAL NO. SEE CHART		DOCUMENT NO. SD-172258-0001		SHEET NO. 1 OF 2	
					DRAFT WHERE APPLICABLE MUST REMAIN WITHIN DIMENSIONS	SIZE D THIS DRAWING CONTAINS INFORMATION THAT IS PROPRIETARY TO MOLEX INCORPORATED AND SHOULD NOT BE USED WITHOUT WRITTEN PERMISSION					



STANDARD HOUSING					
PART NO.	UL	COLOR	CIRCUIT SIZE	KEY OPTION	DIM B
172258-1004	V-0	BLACK	4	KEY A	8.00
172258-1006	V-0	BLACK	6	KEY A	11.50
172258-1008	V-0	BLACK	8	KEY A	15.00
172258-1010	V-0	BLACK	10	KEY A	18.50
172258-1012	V-0	BLACK	12	KEY A	22.00
172258-1014	V-0	BLACK	14	KEY A	25.50
172258-1016	V-0	BLACK	16	KEY A	29.00
172258-2004	V-0	NATURAL	4	KEY B	8.00
172258-2006	V-0	NATURAL	6	KEY B	11.50
172258-2008	V-0	NATURAL	8	KEY B	15.00
172258-2010	V-0	NATURAL	10	KEY B	18.50
172258-2012	V-0	NATURAL	12	KEY B	22.00
172258-2014	V-0	NATURAL	14	KEY B	25.50
172258-2016	V-0	NATURAL	16	KEY B	29.00

WITH TPA ATTACH FEATURE					
PART NO.	UL	COLOR	CIRCUIT SIZE	KEY OPTION	DIM B
172258-1104	V-0	BLACK	4	KEY A	8.00
172258-1106	V-0	BLACK	6	KEY A	11.50
172258-1108	V-0	BLACK	8	KEY A	15.00
172258-1110	V-0	BLACK	10	KEY A	18.50
172258-1112	V-0	BLACK	12	KEY A	22.00
172258-1114	V-0	BLACK	14	KEY A	25.50
172258-1116	V-0	BLACK	16	KEY A	29.00
172258-2104	V-0	NATURAL	4	KEY B	8.00
172258-2106	V-0	NATURAL	6	KEY B	11.50
172258-2108	V-0	NATURAL	8	KEY B	15.00
172258-2110	V-0	NATURAL	10	KEY B	18.50
172258-2112	V-0	NATURAL	12	KEY B	22.00
172258-2114	V-0	NATURAL	14	KEY B	25.50
172258-2116	V-0	NATURAL	16	KEY B	29.00

SEE PAGE 1 IEC NO. UCP2015-4103 DRAWN BY: DROSCA CHKD: CHYD APP: RHODGE REV: A6	QUALITY SYMBOLS		GENERAL TOLERANCES (UNLESS SPECIFIED)		DIMENSION STYLE MM ONLY		SCALE 4:1		DESIGN UNITS METRIC		THIRD ANGLE PROJECTION	
	▽=0		mm INCH		DRAWN BY DATE DROSCA 2014/03/07		TITLE		ULTRA-FIT RECEPTACLE 4-16 CKTS DUAL ROW			
	▽=0		4 PLACES ± ± ± ±		CHECKED BY DATE		APPROVED BY DATE RHODGE 2014/10/14		molex			
	▽=0		3 PLACES ± ± ± ±		MATERIAL NO.		DOCUMENT NO.		SD-172258-0001			
			2 PLACES ± 0.25		SEE PAGE 1		SHEET NO.		2 OF 2			
			1 PLACE ± 0.5		SIZE D		THIS DRAWING CONTAINS INFORMATION THAT IS PROPRIETARY TO MOLEX INCORPORATED AND SHOULD NOT BE USED WITHOUT WRITTEN PERMISSION					
		0 PLACE ± ± ± ±		ANGULAR ±1/2°								
				DRAFT WHERE APPLICABLE MUST REMAIN WITHIN DIMENSIONS								