

20 19 18 17 16 15 14 13 12 11 10 9 8 7 6 5 4 3 2 1

M

L

K

J

I

H

G

F

E

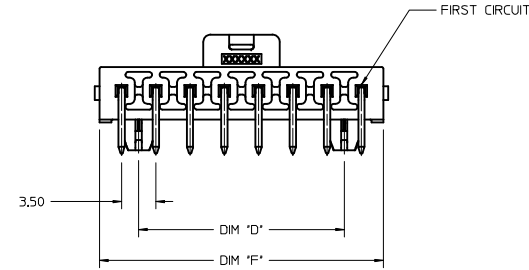
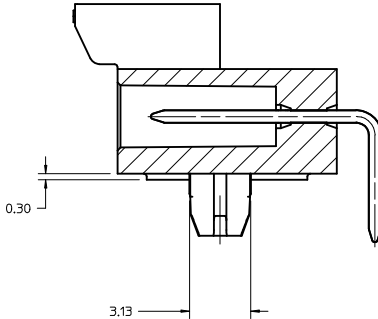
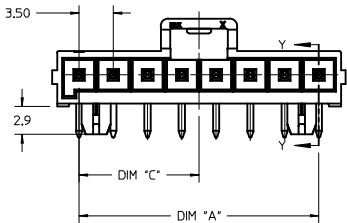
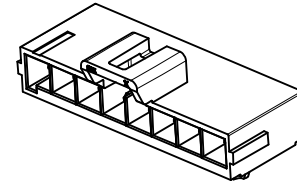
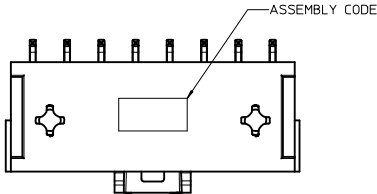
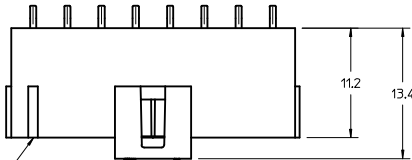
D

C

B

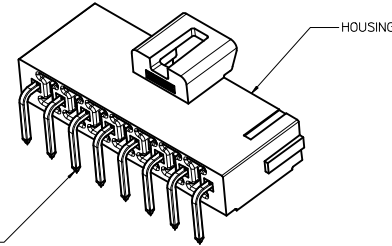
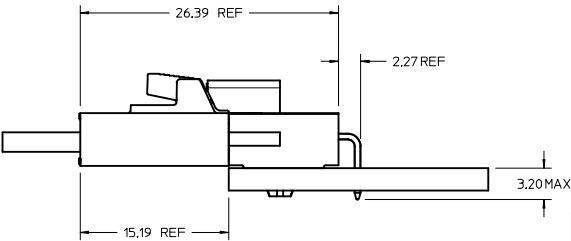
A

FIRST CIRCUIT MARK
(NOT SHOWING ON 2
AND 3 CIRCUITS SERIES)

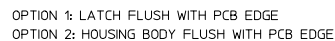
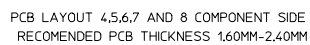


NOTES:

1. MATERIAL :
HOUSING
OPTION 1: LCP E130i BLACK
OPTION 2: LCP E130i NATURAL
TERMINAL: COPPER ALLOY
2. PLATING FINISH:
OPTION 1 - 1.5µm(60µin)-2.5µm(100µin) TIN OVER
1.25µm(50µin)-2.5µm(100µin) NICKEL OVERALL
OPTION 2 - 0.35µm(15µin) GOLD CONTACT AREA,
1.5µm(60µin)-2.5µm(100µin) TIN TAIL AREA OVER
1.25µm(50µin)-2.5µm(100µin) NICKEL OVERALL
OPTION 3 - 0.70µm(30µin) GOLD CONTACT AREA,
1.5µm(60µin)-2.5µm(100µin) TIN TAIL AREA OVER
1.25µm(50µin)-2.5µm(100µin) NICKEL OVERALL
2. PARTS TO BE PACKAGED PER PK-172310-9001
3. PRODUCT SPECIFICATION PS-172323-0001
4. PART MATES WITH MOLEX RECEPTACLE HOUSING
172256 AND 172260
5. PART CONFORMS TO CLASS "C" REQUIREMENTS OF SPECIFICATION
PS-45499-002 WITH 0.13 MM MAXIMUM FLASH ALLOWED IN CORE
HOLES AND FRONT SURFACE.
6. DISCOLORATION IN THE BANDOLIER AREA OF THE PIN IS
INHERENT TO THE PLATING PROCESS AND IS DUE TO THE MASKING
EFFECT OF THE CARRIER. THIS DISCOLORATION IS IN A NON-FUNCTIONAL
AREA OF THE PIN AND WILL NOT AFFECT THE PERFORMANCE OF THE
HEADER ASSEMBLY.
7. ASSEMBLY SPECIFICATION: AS-172323-0001



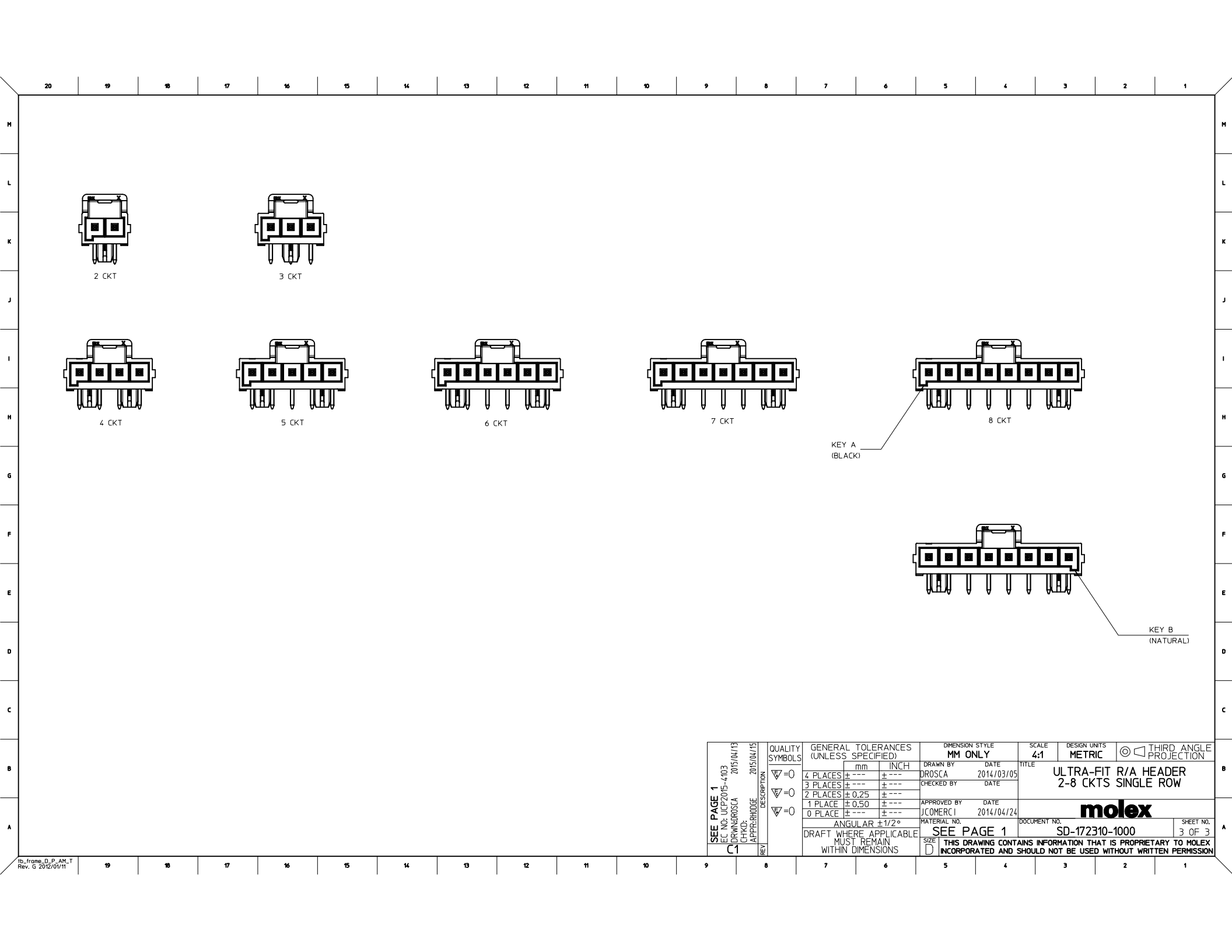
19 18 17 16 15 14 13 12 11 10 9 8 7 6 5 4 3 2 1



15 MICRONCH GOLD PLATING							
PART NO.	COLOR	CIRCUIT SIZE	KEY OPTION	DIM A	DIM F	DIM C	DIM D
172310-1202	BLACK	2	KEY A	3.50	8.00	1.75	0.00
172310-1203	BLACK	3	KEY A	7.00	11.50	3.50	0.00
172310-1204	BLACK	4	KEY A	10.50	15.00	5.25	7.00
172310-1205	BLACK	5	KEY A	14.00	18.50	7.00	10.50
172310-1206	BLACK	6	KEY A	17.50	22.00	8.75	14.00
172310-1207	BLACK	7	KEY A	21.00	25.50	10.50	17.50
172310-1208	BLACK	8	KEY A	24.50	29.00	12.25	21.00
172310-2202	NATURAL	2	KEY B	3.50	8.00	1.75	0.00
172310-2203	NATURAL	3	KEY B	7.00	11.50	3.50	0.00
172310-2204	NATURAL	4	KEY B	10.50	15.00	5.25	7.00
172310-2205	NATURAL	5	KEY B	14.00	18.50	7.00	10.50
172310-2206	NATURAL	6	KEY B	17.50	22.00	8.75	14.00
172310-2207	NATURAL	7	KEY B	21.00	25.50	10.50	17.50
172310-2208	NATURAL	8	KEY B	24.50	29.00	12.25	21.00

30 MICRONCH GOLD PLATING							
PART NO.	COLOR	CIRCUIT SIZE	KEY OPTION	DIM A	DIM F	DIM C	DIM D
172310-1302	BLACK	2	KEY A	3.50	8.00	1.75	0.00
172310-1303	BLACK	3	KEY A	7.00	11.50	3.50	0.00
172310-1304	BLACK	4	KEY A	10.50	15.00	5.25	7.00
172310-1305	BLACK	5	KEY A	14.00	18.50	7.00	10.50
172310-1306	BLACK	6	KEY A	17.50	22.00	8.75	14.00
172310-1307	BLACK	7	KEY A	21.00	25.50	10.50	17.50
172310-1308	BLACK	8	KEY A	24.50	29.00	12.25	21.00
172310-2302	NATURAL	2	KEY B	3.50	8.00	1.75	0.00
172310-2303	NATURAL	3	KEY B	7.00	11.50	3.50	0.00
172310-2304	NATURAL	4	KEY B	10.50	15.00	5.25	7.00
172310-2305	NATURAL	5	KEY B	14.00	18.50	7.00	10.50
172310-2306	NATURAL	6	KEY B	17.50	22.00	8.75	14.00
172310-2307	NATURAL	7	KEY B	21.00	25.50	10.50	17.50
172310-2308	NATURAL	8	KEY B	24.50	29.00	12.25	21.00

SEE PAGE 1 EC NO: UCP2015-4703 DRAWINGROSSA 2015/04/13 CHICK 2015/04/13 APPROBRIDGE 2015/04/15 REV	QUALITY SYMBOLS	GENERAL TOLERANCES (UNLESS SPECIFIED)		DIMENSION STYLE MM ONLY		SCALE 4:1	DESIGN UNITS METRIC	THIRD ANGLE PROJECTION	
	$\nabla = 0$ $\nabla = 0$ $\nabla = 0$	mm	INCH	DRAWN BY DROSSA	DATE 2014/03/05	TITLE ULTRA-FIT R/A HEADER 2-8 CKTS SINGLE ROW			
	$\nabla = 0$ $\nabla = 0$ $\nabla = 0$	4 PLACES \pm --- 3 PLACES \pm --- 2 PLACES ± 0.25 1 PLACE ± 0.50 0 PLACE \pm ---	4 PLACES \pm --- 3 PLACES \pm --- 2 PLACES \pm --- 1 PLACE \pm --- 0 PLACE \pm ---	CHECKED BY DATE APPROVED BY JCOMERC I 2014/04/24					
	ANGULAR $\pm 1/2^\circ$		MATERIAL NO.		DOCUMENT NO.		SHEET NO.		
DRAFT WHERE APPLICABLE MUST REMAIN WITHIN DIMENSIONS		SIZE		SEE PAGE 1 SD-172310-1000		2 OF 3			



2 CKT

3 CKT

4 CKT

5 CKT

6 CKT

7 CKT

8 CKT

KEY A
(BLACK)

KEY B
(NATURAL)

SEE PAGE 1 EC NO: UCP2015-4103 DRAWN: DROSCA 2015/04/13 CHKD: CHYK APPR: RHODGE 2015/04/15 REV	QUALITY SYMBOLS ▽=0 ▽=0 ▽=0	DESCRIPTION	GENERAL TOLERANCES (UNLESS SPECIFIED)		DIMENSION STYLE MM ONLY		SCALE 4:1	DESIGN UNITS METRIC	THIRD ANGLE PROJECTION	
			4 PLACES 3 PLACES 2 PLACES 1 PLACE 0 PLACE	mm	INCH	DRAWN BY DROSCA	DATE 2014/03/05	TITLE ULTRA-FIT R/A HEADER 2-8 CKTS SINGLE ROW		
				±	±	CHECKED BY	DATE			
				±	±	APPROVED BY JCOMERCJ	DATE 2014/04/24			
				±	±	MATERIAL NO.	DOCUMENT NO.			
				±	±	SEE PAGE 1				
			ANGULAR ±1/2°		SIZE D		SD-172310-1000		SHEET NO. 3 OF 3	
			DRAFT WHERE APPLICABLE MUST REMAIN WITHIN DIMENSIONS							