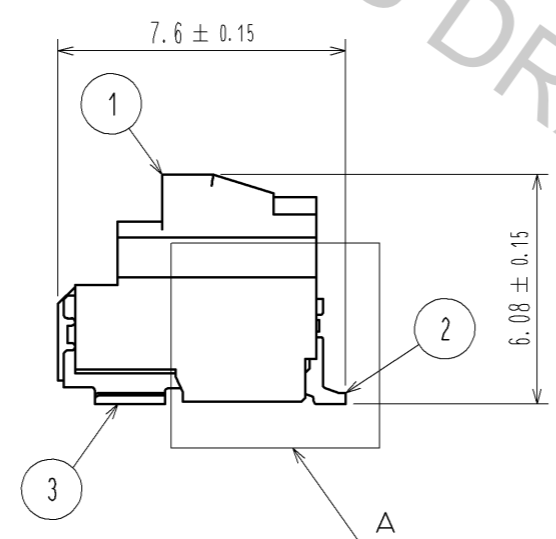
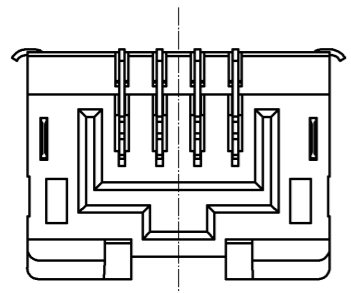
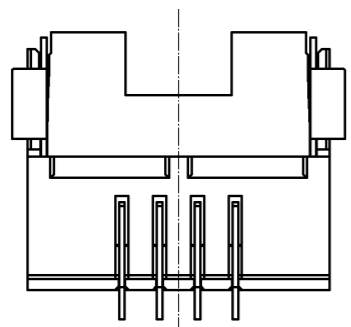
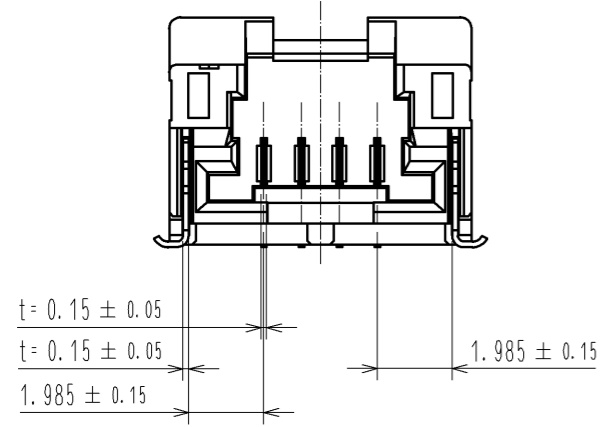
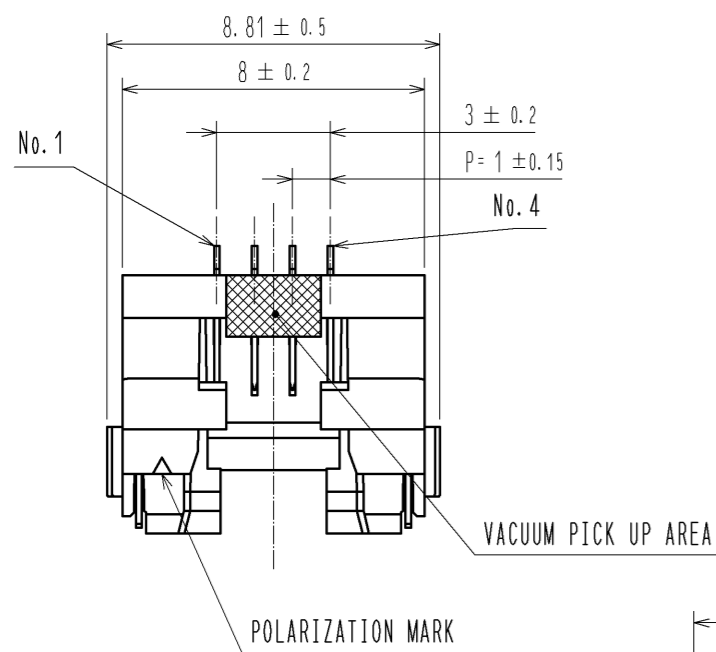
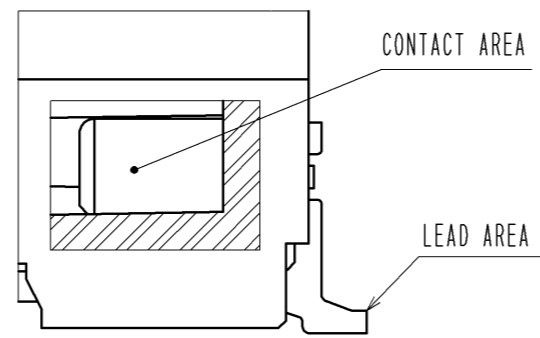


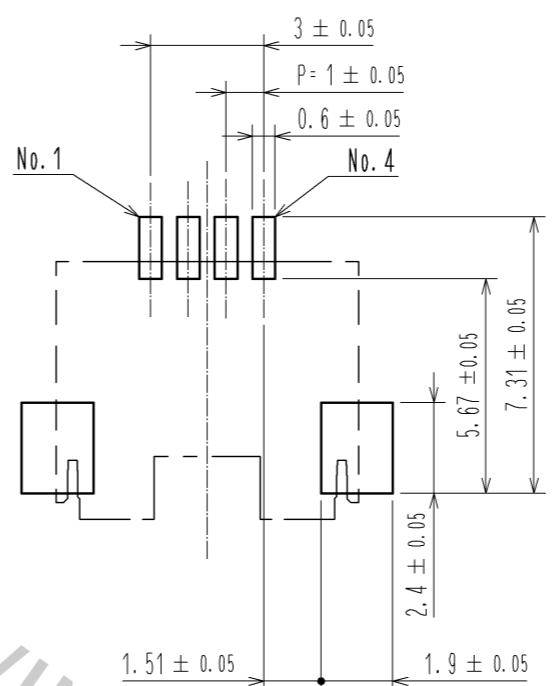
Oct.1.2018 Copyright 2018 HIROSE ELECTRIC CO., LTD. All Rights Reserved.  
In case that the application demands a high level of reliability, such as automotive,  
please contact a company representative for further information.



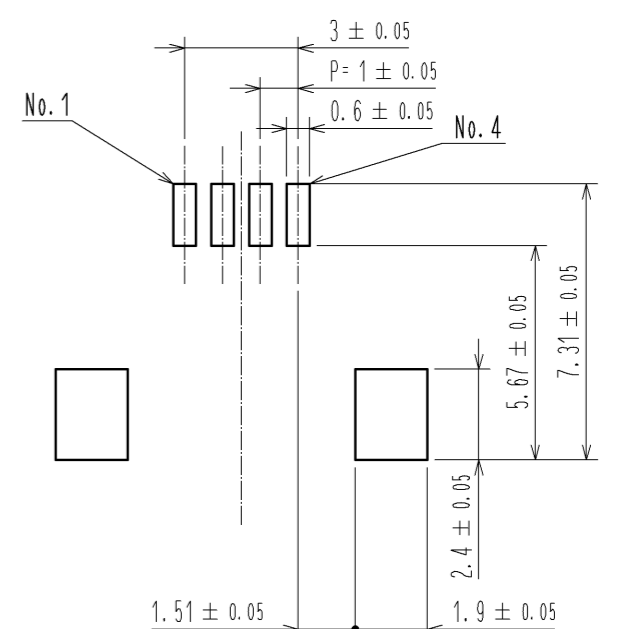
A (10 : 1)



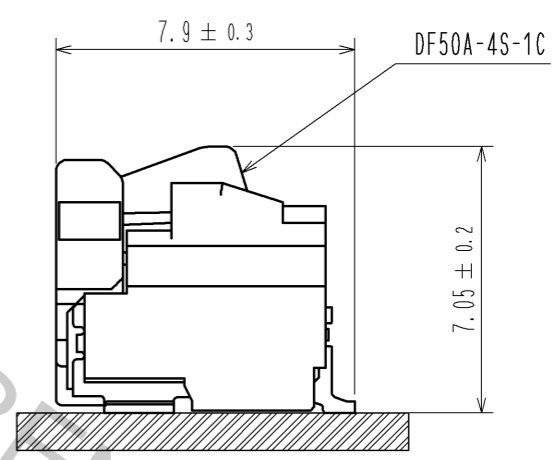
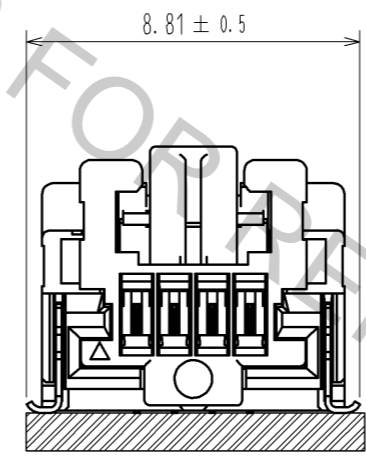
### RECOMMENDED PCB LAYOUT (MOUNTING SURFACE SIDE) (FREE)



### RECOMMENDED METAL MASK (FREE) THICKNESS : 0.1mm OPEN AREA RATIO:100%



### MATING FIGURE(5:1)



- NOTES 1. LEAD CO-PLANARITY SHALL BE 0.1mm MAX  
2. PLEASE CONSULT HIROSE WHEN THE PRODUCT IS MONUTED TO FPC.

3	BRASS	CONTACT AREA : Sn PLATING 1μm MIN UNDER PLATING : Cu PLATING 0.3μm MIN	6	PS	REEL , BLACK
2	BRASS	CONTACT AREA : Au PLATING 0.05μm MIN LEAD AREA : Au PLATING 0.05μm MIN UNDER PLATING : Ni PLATING 1μm MIN	5	POLYESTER	CLEAR
1	LCP	BLACK , UL94V-0	4	PS	CLEAR
NO.	MATERIAL	FINISH , REMARKS	NO.	MATERIAL	CLEAR
UNITS mm		SCALE 5 : 1	COUNT	DESCRIPTION OF REVISIONS	DESIGNED
HRS		HIROSE ELECTRIC CO., LTD.	APPROVED : KI. AKIYAMA	12.06.19	DRAWING NO.
			CHECED : HK. UMEHARA	12.06.19	PART NO.
			DESIGNED : ST. SATO	12.06.19	CODE NO.
			DRAWN : ST. SATO	12.06.19	
					EDC3-337106-01
					DF50A-4P-1H(51)
					CL665-1033-0-51
					1/2

Oct.1.2018 Copyright 2018 HIROSE ELECTRIC CO., LTD. All Rights Reserved.  
In case that the application demands a high level of reliability, such as automotive,  
please contact a company representative for further information.

