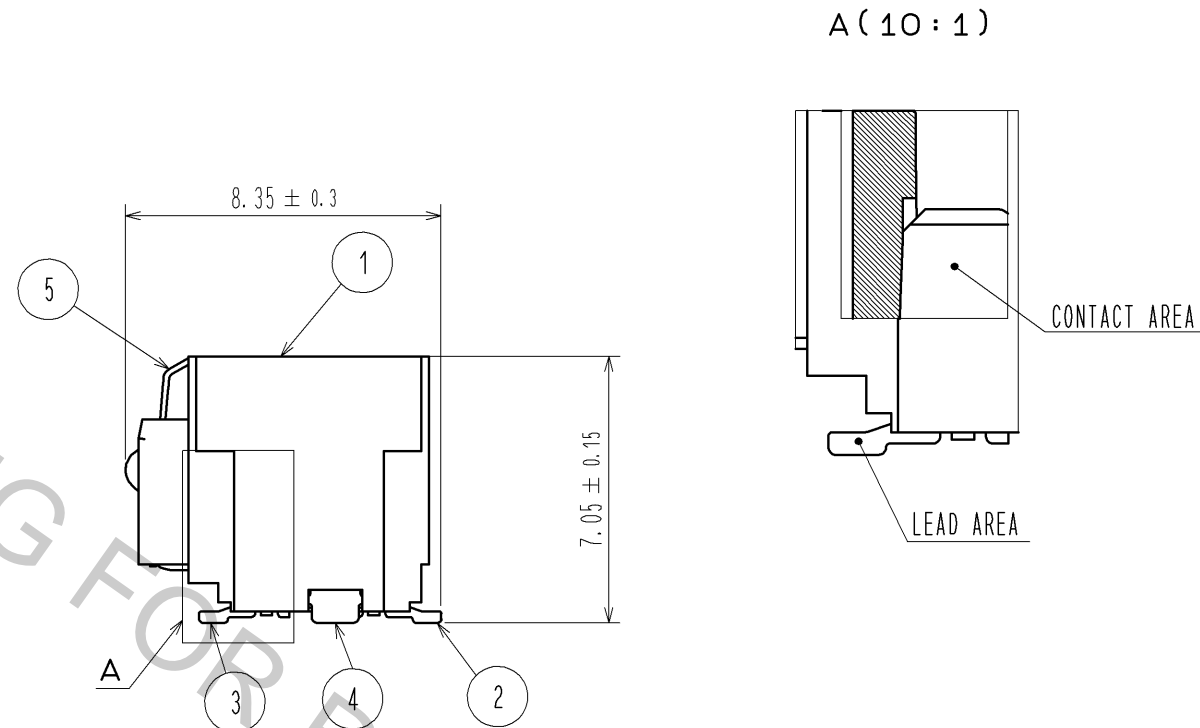
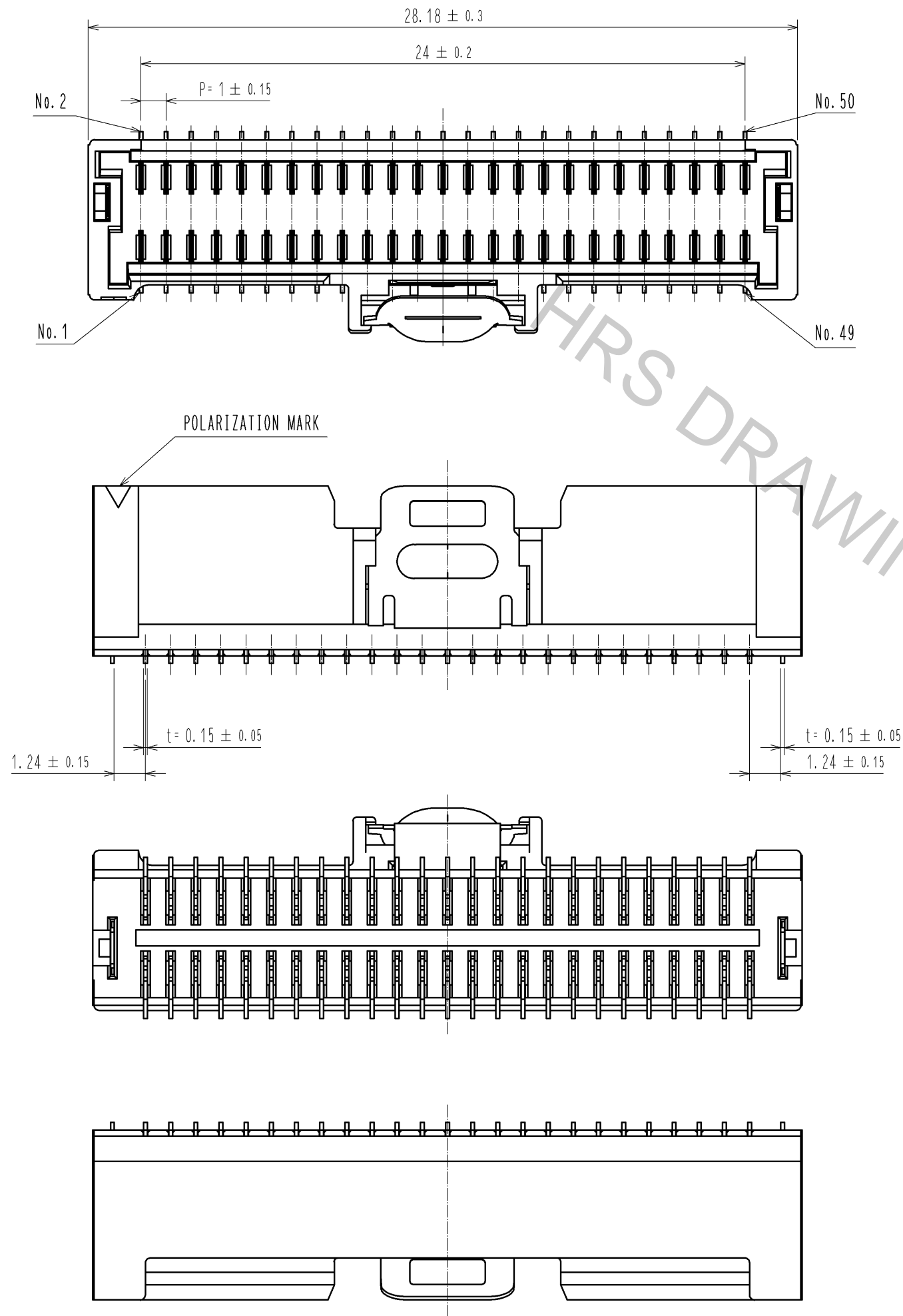


Oct.1.2018 Copyright 2018 HIROSE ELECTRIC CO., LTD. All Rights Reserved.
In case that the application demands a high level of reliability, such as automotive,
please contact a company representative for further information.

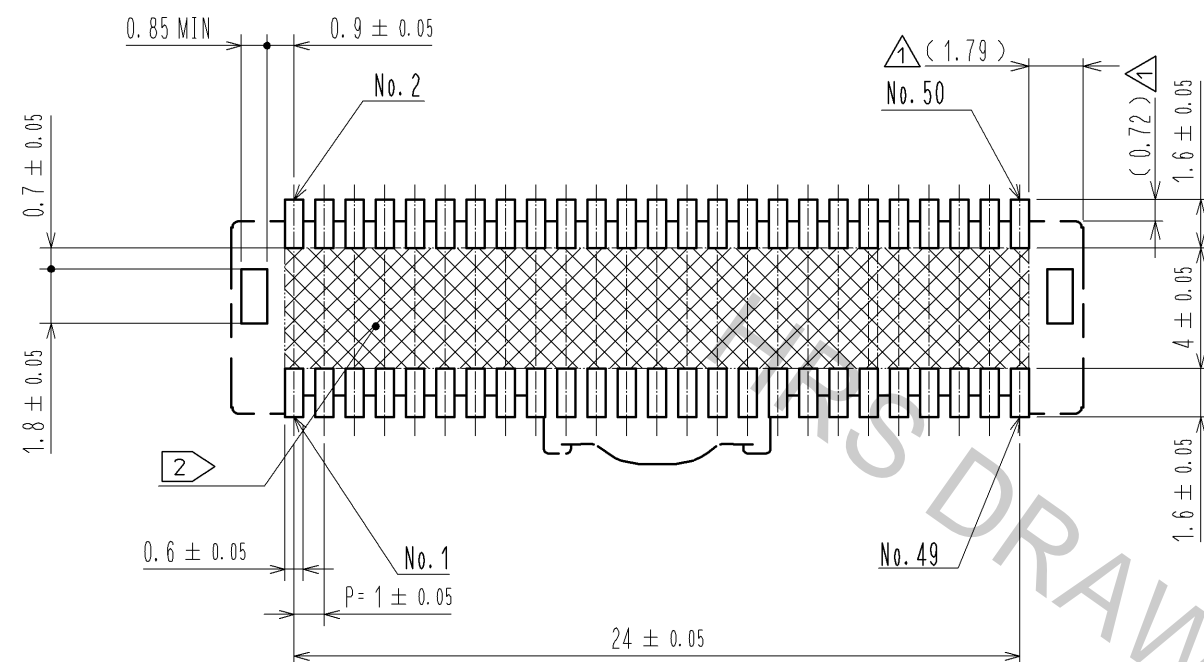


- NOTES
1. LEAD CO-PLANARITY SHALL BE 0.1 mm MAX.
 2. AREA INDICATED MUST BE FREE OF CONDUCTIVE TRACES OR THE CONDUCTIVE TRACES MUST BE COVERED BY RESIST FILM.
 3. PLEASE CONSULT HIROSE WHEN THE PRODUCT IS MOUNTED TO EPC.

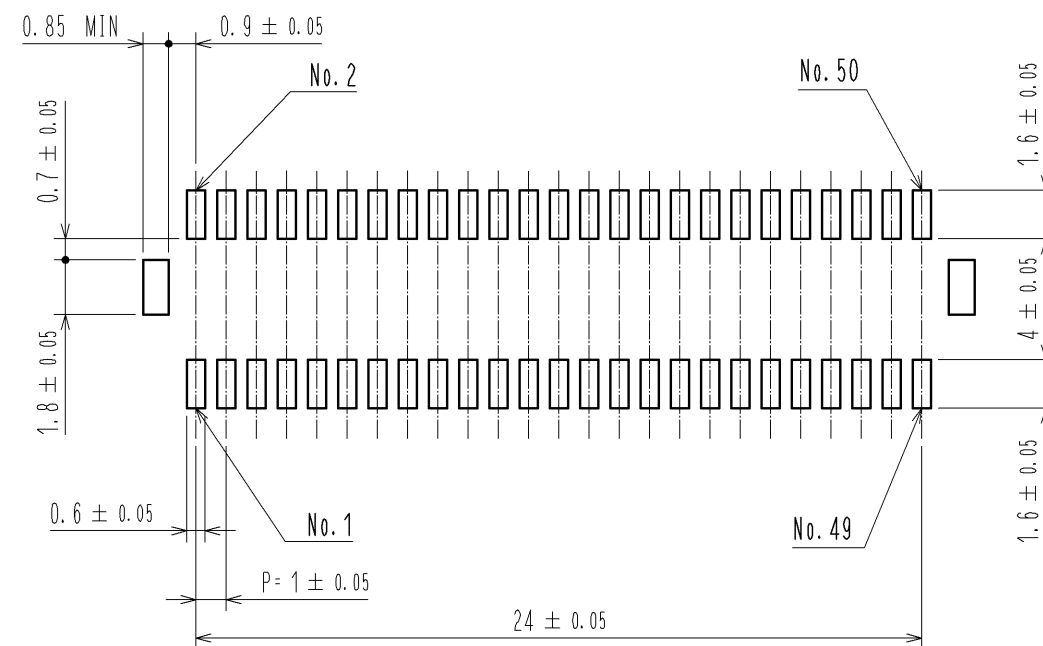
| | | | | | |
|-----|----------|---------------------------------------|-----|----------|--------------------------------------|
| 3 | BRASS | CONTACT AREA : Au PLATING 0.05μm MIN. | 8 | PS | REEL. BLACK |
| | | LEAD AREA : Au PLATING 0.05μm MIN. | | | |
| | | UNDERPLATING : Ni PLATING 1μm MIN. | | | |
| 2 | BRASS | CONTACT AREA : Au PLATING 0.05μm MIN. | 6 | PS | CLEAR |
| | | LEAD AREA : Au PLATING 0.05μm MIN. | | | |
| | | UNDERPLATING : Ni PLATING 1μm MIN. | | | |
| 1 | LCP | BLACK. UL94V-0 | 4 | BRASS | SURFACE : Sn PLATING 1μm MIN. |
| | | | | | UNDERPLATING : Ni PLATING 0.5μm MIN. |
| NO. | MATERIAL | FINISH , REMARKS | NO. | MATERIAL | FINISH , REMARKS |

| | | | | | | | | |
|---------------------------|------------------------|---------------|----------|-------|----------------------------|----------|---------|------|
| UNITS mm | | SCALE FREE | | COUNT | DESCRIPTION OF REVISIONS | DESIGNED | CHECKED | DATE |
| | | | | 4 | | | | |
| HIROSE ELECTRIC CO., LTD. | APPROVED : KI. AKIYAMA | | 12.05.31 | | DRAWING NO. EDC3-330237-01 | | | |
| | CHECED : HK. UMEHARA | | 12.05.31 | | PART NO. DF50-50DP-1V(51) | | | |
| | DESIGNED : TT. OHSAKO | | 12.05.30 | | CODE NO. CL665-0011-1-51 | | | |
| | DRAWN : TT. OHSAKO | | 12.05.30 | | | | | |
| | | | | | 3 | | | |

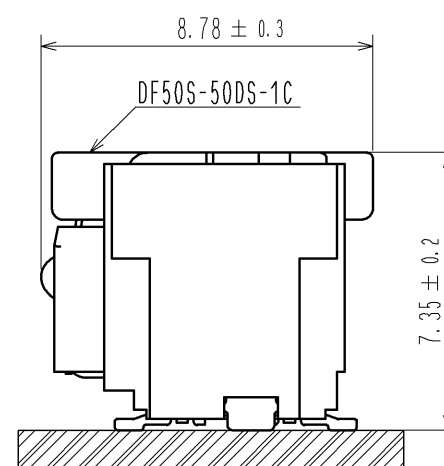
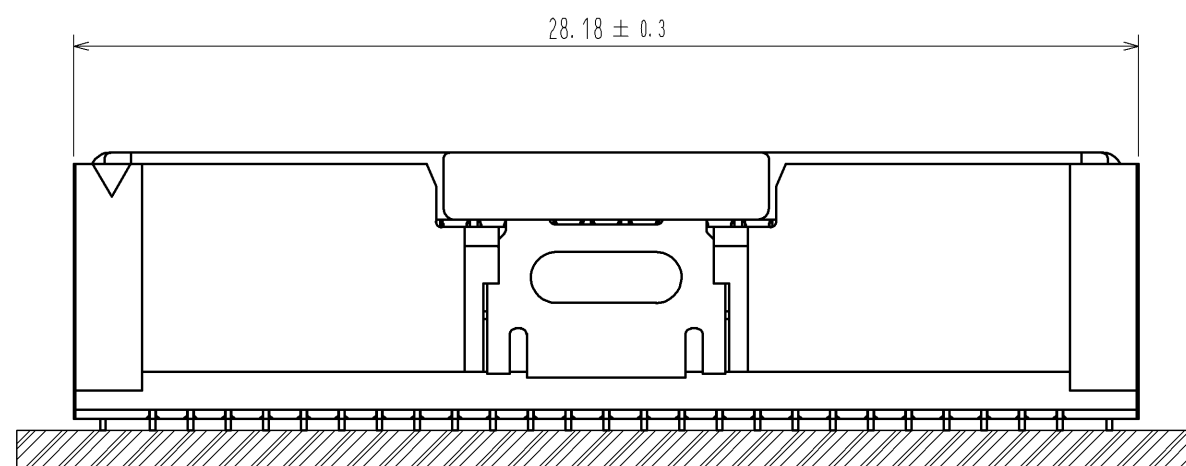
RECOMMENDED PCB LAYOUT
(MOUNTING SURFACE SIDE) (FREE)



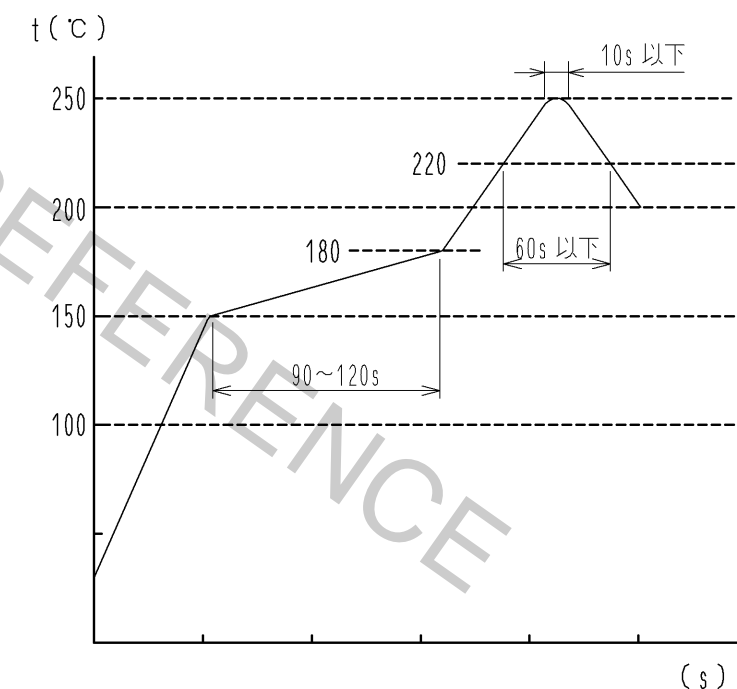
RECOMMENDED METAL MASK (FREE)
THICKNESS : 0.1mm



MATING FIGURE (5 : 1)



REFLOW TEMPERATURE PROFILE
USING LEAD-FREE SOLDER PASTE(REFERENCE)



NUMBER OF REFLOW CYCLES : 2 CYCLES MAX.
THE TEMPERATURE OF THIS PROFILE IS MASURED ON THE LEAD TERMINAL.

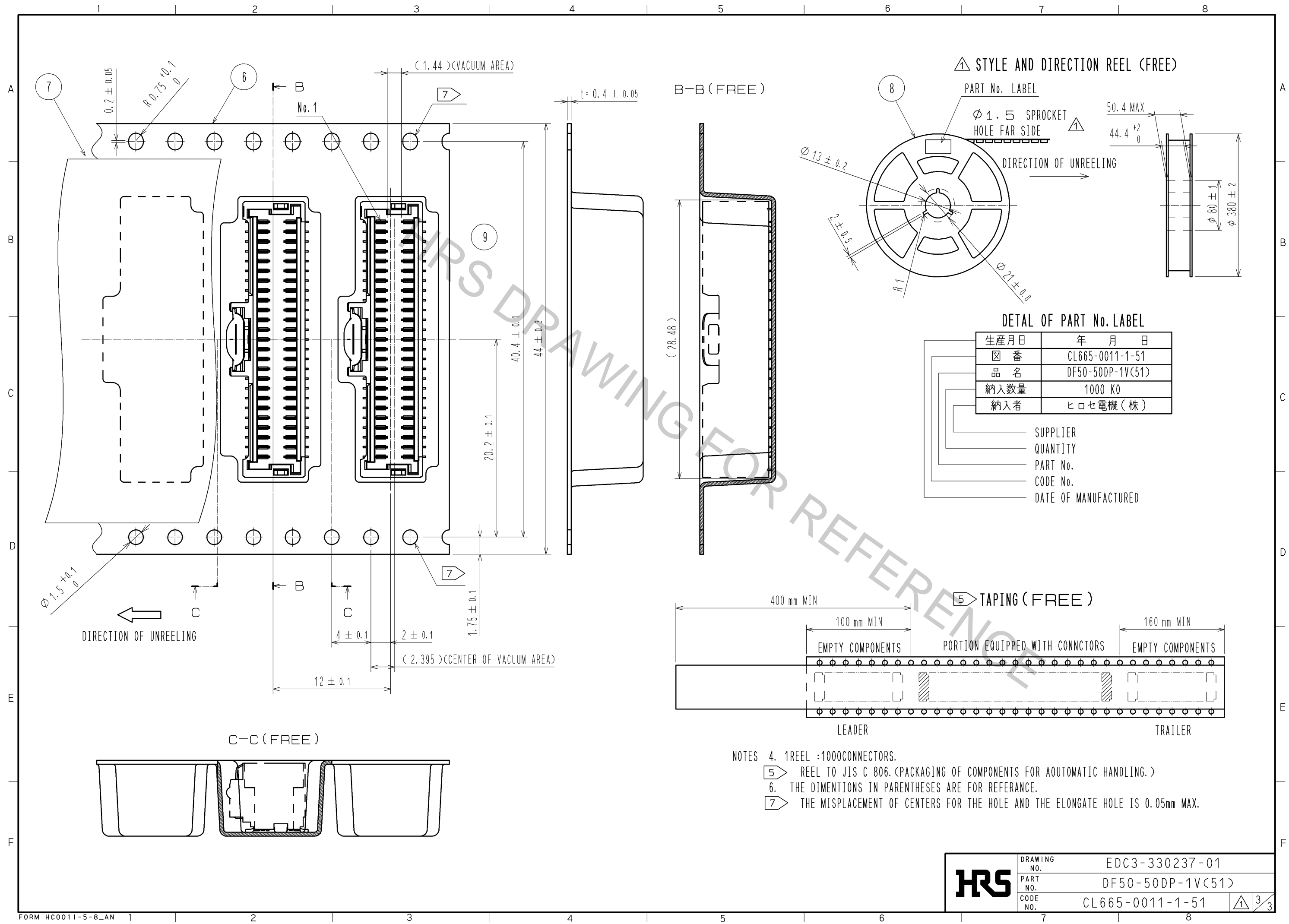
WE RECOMMEND PERFORMING AN EVALUATION UNDER THE MOUNTING
CONDITIONS YOU WILL BE USING BECAUSE IT COULD BE AFFECTED
BY ANY CONDITION:TYPE OF SOLDER PASTE, SIZE OF PCB, MOUNTING
METAL etc.

HRS

| | |
|-------------|------------------|
| DRAWING NO. | EDC3-330237-01 |
| PART NO. | DF50-50DP-1V(51) |
| CODE NO. | CL665-0011-1-51 |

2/3

Oct.1.2018 Copyright 2018 HIROSE ELECTRIC CO., LTD. All Rights Reserved.
In case that the application demands a high level of reliability, such as automotive,
please contact a company representative for further information.



| | | |
|-----|-------------|------------------|
| HRS | DRAWING NO. | EDC3-330237-01 |
| | PART NO. | DF50-50DP-1V(51) |
| | CODE NO. | CL665-0011-1-51 |