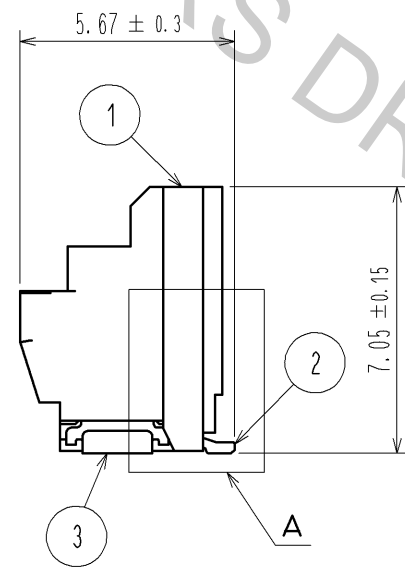
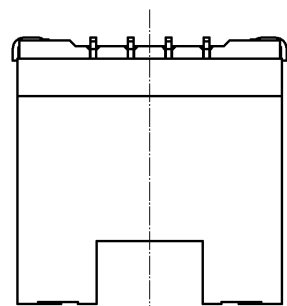
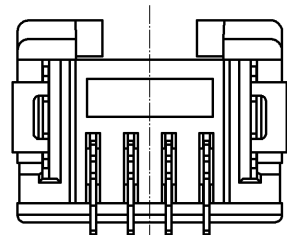
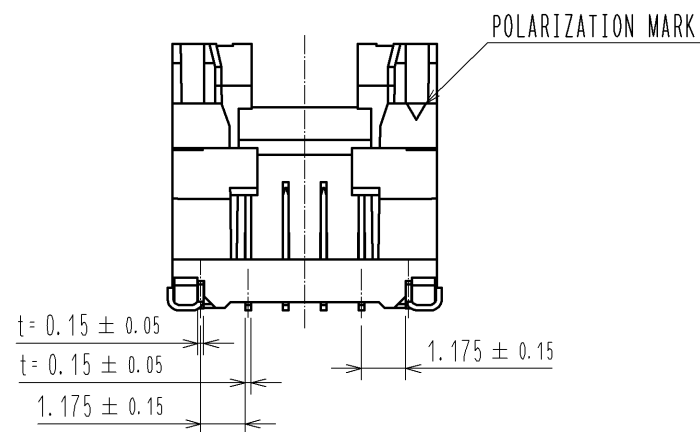
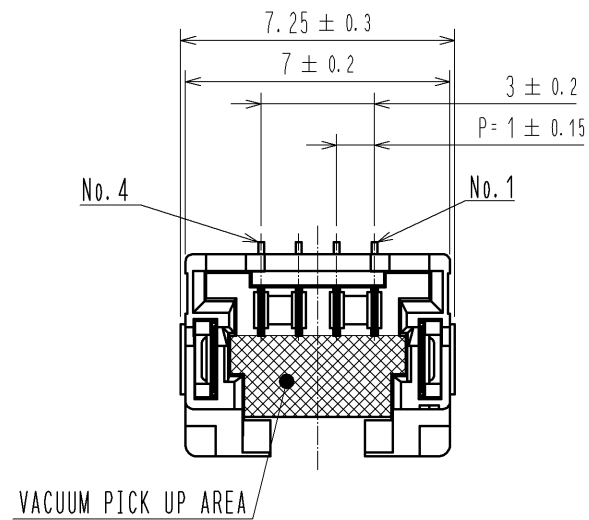
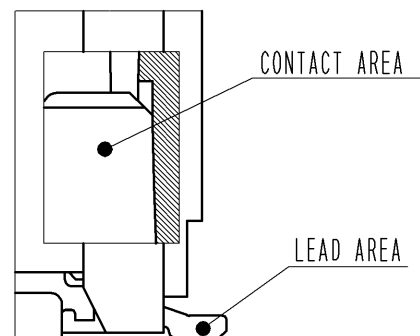


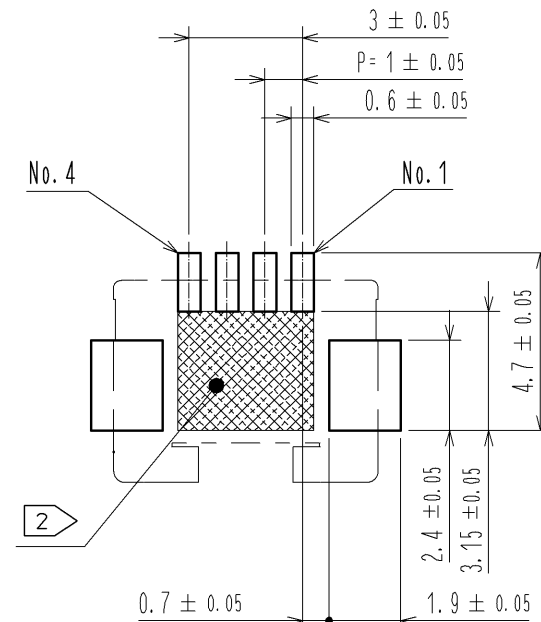
Oct.1.2018 Copyright 2018 HIROSE ELECTRIC CO., LTD. All Rights Reserved.
In case that the application demands a high level of reliability, such as automotive,
please contact a company representative for further information.



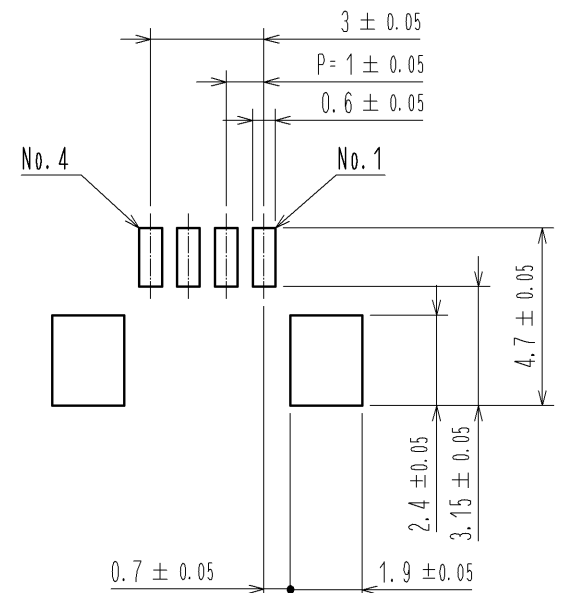
A (10 : 1)



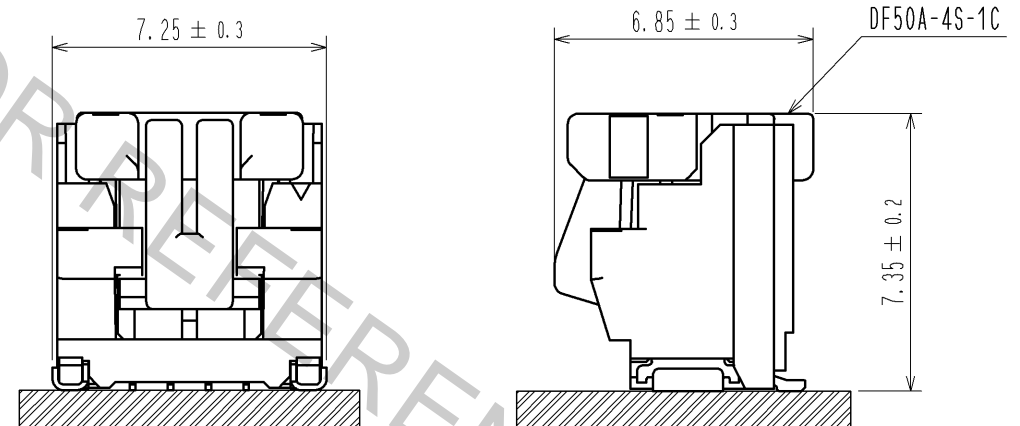
RECOMMENDED PCB LAYOUT (MOUNTING SURFACE SIDE) (FREE)



RECOMMENDED METAL MASK (FREE) THICKNESS : 0.1mm OPEN AREA RATIO:100%

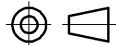




MATING FIGURE(5:1)




- NOTES 1. LEAD CO-PLANARITY SHALL BE 0.1mm MAX
2. AREA INDICATED MUST BE FREE OF CONDUCTIVE TRACES OR THE CONDUCTIVE TRACES MUST BE COVERED BY RESIST FILM.
3. PLEASE CONSULT HIROSE WHEN THE PRODUCT IS MOUNTED TO FPC.

3	PHOSPHOR BRONZE	CONTACT AREA : Sn PLATING 1μm MIN UNDER PLATING : Cu PLATING 0.3μm MIN			
2	BRASS	CONTACT AREA : Au PLATING 0.05μm MIN LEAD AREA : Au PLATING 0.05μm MIN UNDER PLATING : Ni PLATING 1μm MIN	6	PS	REEL . BLACK
			5	POLYESTER	CLEAR
1	LCP	BLACK , UL94V-0	4	PS	CLEAR
NO.	MATERIAL	FINISH , REMARKS	NO.	MATERIAL	FINISH , REMARKS

UNITS mm		SCALE 5 : 1		COUNT	DESCRIPTION OF REVISIONS	DESIGNED	CHECKED	DATE

	HIROSE ELECTRIC CO., LTD.	APPROVED : KI. AKIYAMA	10.12.14	DRAWING NO.	EDC3-329222-01		
		CHECED : OM. MIYAMOTO	10.12.14	PART NO.	DF50A-4P-1V(51)		
		DESIGNED : TT. OHSAKO	10.12.13	CODE NO.	CL665-1006-7-51		
		DRAWN : TT. OHSAKO	10.12.13				

	1/2
---	-----

Oct.1.2018 Copyright 2018 HIROSE ELECTRIC CO., LTD. All Rights Reserved.
In case that the application demands a high level of reliability, such as automotive,
please contact a company representative for further information.

