

SHELL SIZE	MIL P/N (DASH NO)	'A' $+0.031$ -0.016	'B' MAX CLOSED	'C' MAX	'D' MIN	'E' MAX	'F' MIN	'G' THREAD -2A	'H' THREAD -2B	'J' (GLAND)		MAX CABLE ENTRY
										APPROX. FREE	CLOSED	
10SL, 12S	MS3057-4C	0.188	0.296	0.937	0.594	1.375	0.500	0.1380-32 UNC	0.6250-24 NEF	0.312	0.094	0.312
14S	MS3057-6C	0.188	0.390	1.062	0.594	1.375	0.500	5-40 UNC	0.7500-20 NEF	0.438	0.250	0.438
16S, 16	MS3057-8C	0.188	0.434	1.188	0.719	1.375	0.500	0.1380-32 UNC	0.8750-20 UNEF	0.531	0.312	0.515
18	MS3057-10C	0.188	0.434	1.312	0.719	1.437	0.500	0.1380-32 UNC	1.0000-20 UNEF	0.625	0.375	0.614
20, 22	MS3057-12C	0.250	0.596	1.562	0.844	1.437	0.500	0.1640-32 UNC	1.1875-18 UNEF	0.750	0.500	0.738
24, 28	MS3057-16C	0.250	0.596	1.750	1.062	1.562	0.500	0.1640-32 UNC	1.4375-18 UNEF	0.938	0.594	0.926
32	MS3057-20C	0.312	0.858	2.250	1.187	1.812	0.531	0.2500-20 UNC	1.7500-18 NS	1.250	0.938	1.200
36	MS3057-24C	0.312	0.858	2.375	1.200	2.062	0.750	0.2500-20 UNC	2.0000-18 NS	1.375	0.969	1.363
40	MS3057-28C	0.312	1.107	2.625	1.312	2.062	0.750	M6	2.2500-16 NS	1.625	1.138	1.611

ORDERING INFORMATION

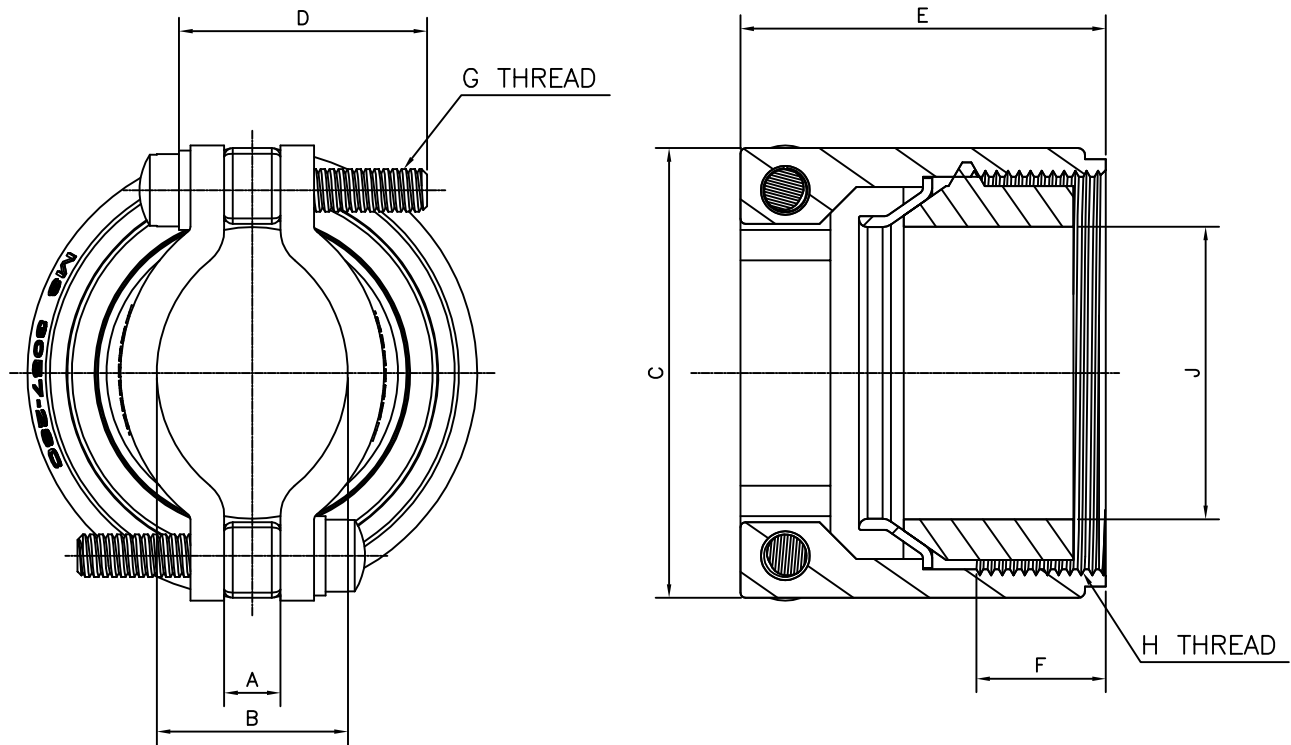
	MS3057-XXC-YYY
SERIES	
DASH NO	
FINISH	

MATERIAL

BODY	ALUMINUM ALLOY
SLEEVE	
CLAMP	
GLAND	SILICONE RUBBER
SCREW	COPPER ALLOY / SS
WASHER	COPPER ALLOY / SS

FINISH (YYY)

NONE	CAD. PLATE OLIVE DRAB GREEN
416/ A23	ELECTROLESS NICKEL
622	CAD. FREE ZINC COBALT OD GREEN
624	CAD. FREE ZINC COBALT BLACK
626	ZINC NICKEL BLACK
726	ELECTROPHORATIC BLACK



ALL DIM'S ARE IN INCHES

STRAIN RELIEF CABLE CLAMP ASSEMBLY
TYPE MS3057-XXC

Scale NTS
Dwg. No. C-80520

2014	Name	Name
Drawn by.	sachin	08/10/14
Checked by	csmurke	08/10/14
App. by	csmurke	08/10/14

Amphenol
Amphenol Interconnect India Pvt. Ltd.
PUNE-411026

4	25/03/15
3	17/03/15
2	14/10/14
1	08/10/14
Issue No.	Rev. Date.