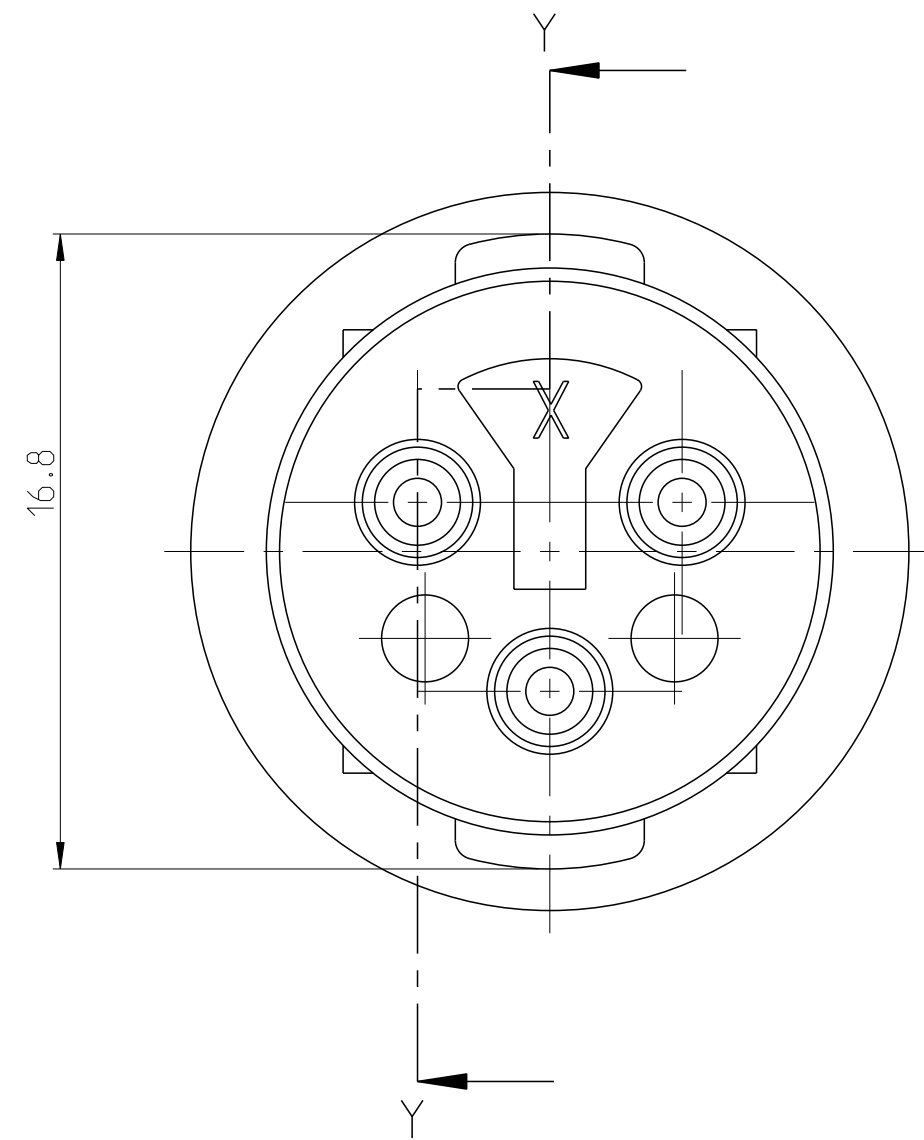
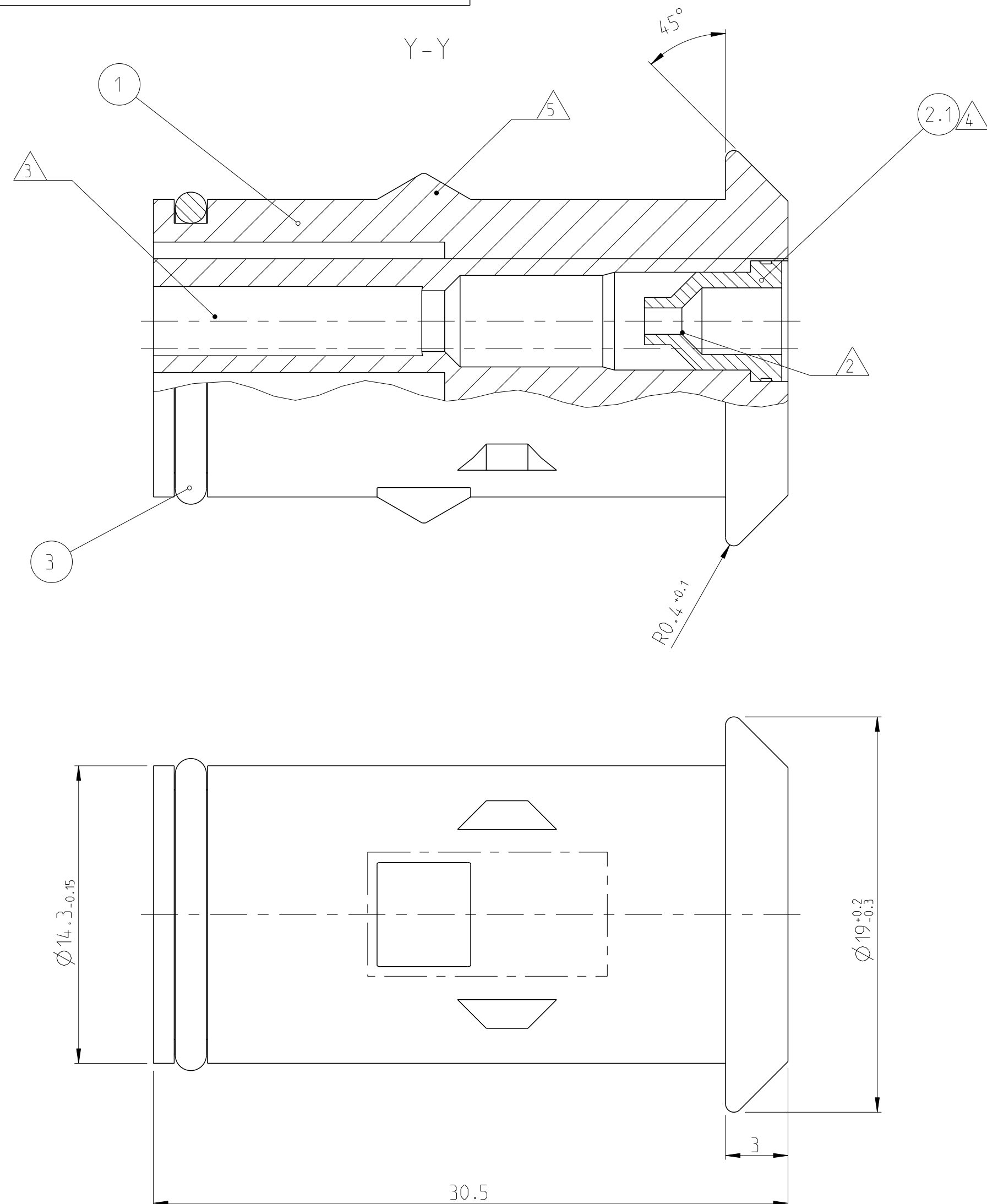


-4 wie gezeichnet  
AS SHOWN

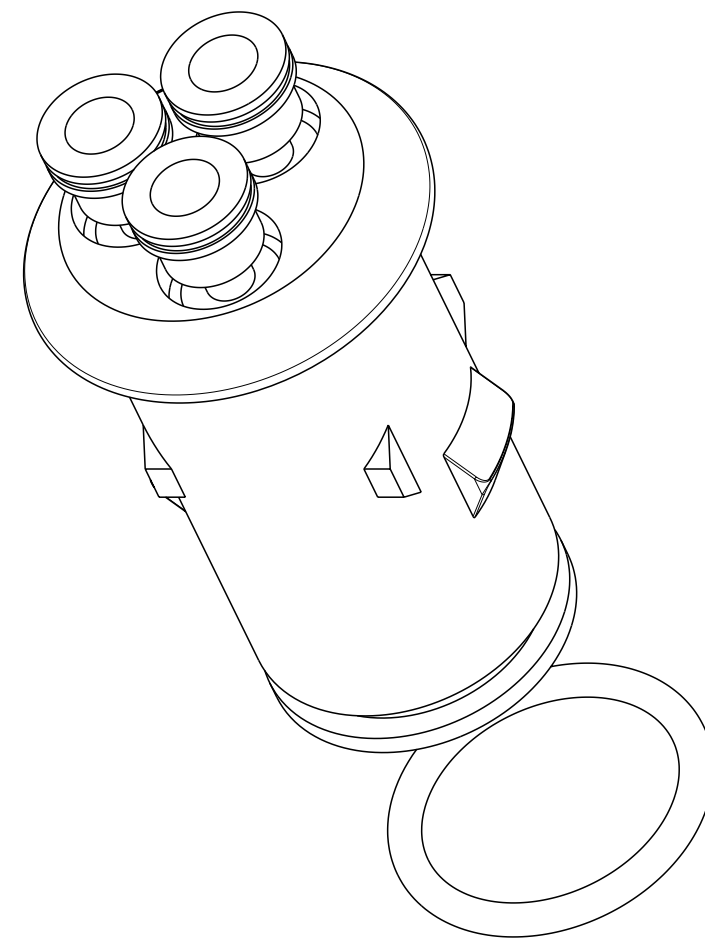


Bemerkungen / Notes:

1. Teile in Lupoleneutol Luftdicht verpackt (500/1000 Sctk.)  
Parts must be airtight packaged in bags of Lupolen (500/1000 pieces)
2. Geschmiert mit Gleitmittel Hellerine (Fa. Hellermannntyton)  
direkt vor dem Einsetzen des Kontaktes  
Lubricated with Hellerine 625 (Hellermannntyton) right before contact insertion
3. Kammer für Buschsenkontakt CIC, C1-2 od. Type III  
Cavity for socket contact CIC, C1-2 or Type III
4. Dichtungsstülpe für Litzenleitung mit  
Isolationsdurchmesser von 2.3-3.0mm  
Seal for wire with isolationdiameter 2.3 - 3.0 mm
10. Dichtungsstülpe für Litzenleitung mit  
Isolationsdurchmesser von 1.3-2.3 mm  
Seal for wire with isolationdiameter 1.3 - 2.3 mm
11. Dichtungsstülpe für Litzenleitung mit  
Isolationsdurchmesser von 1.3-2.3 mm  
Seal for wire with isolationdiameter 1.3 - 2.3 mm

 Keying Form with the Mating Connector: Click Stop

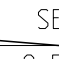
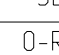
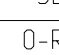
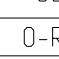
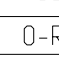
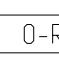
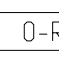
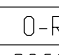
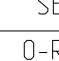
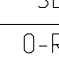
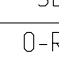
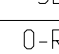
6 Keying Form with the Mating Connector: Locking



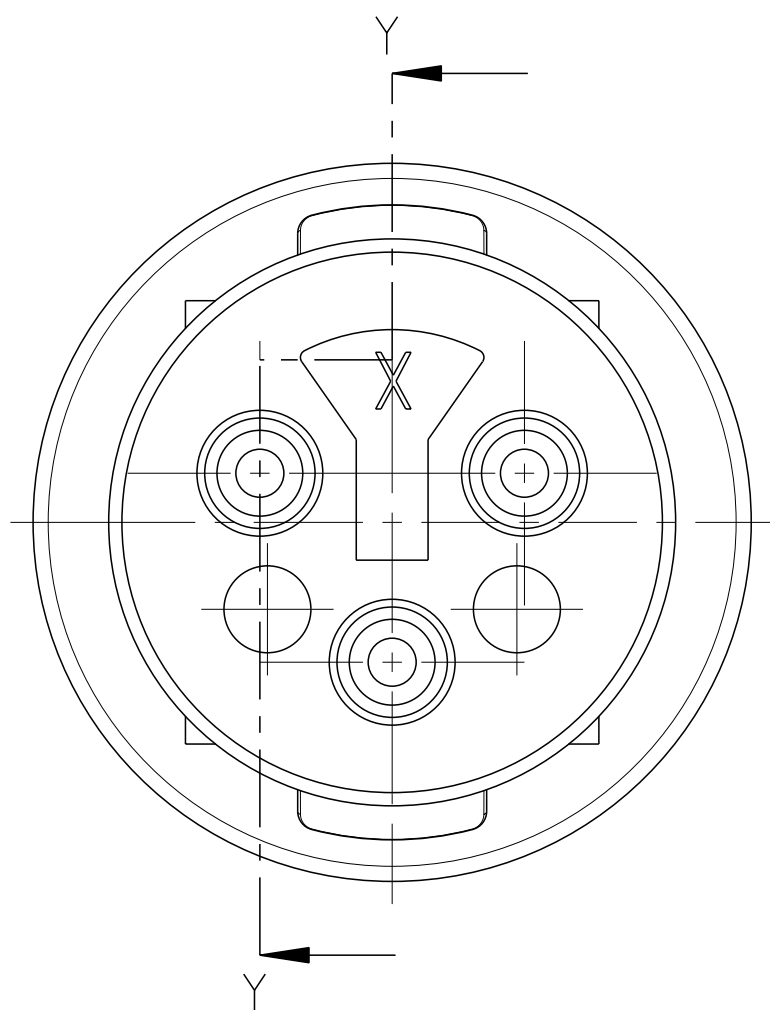
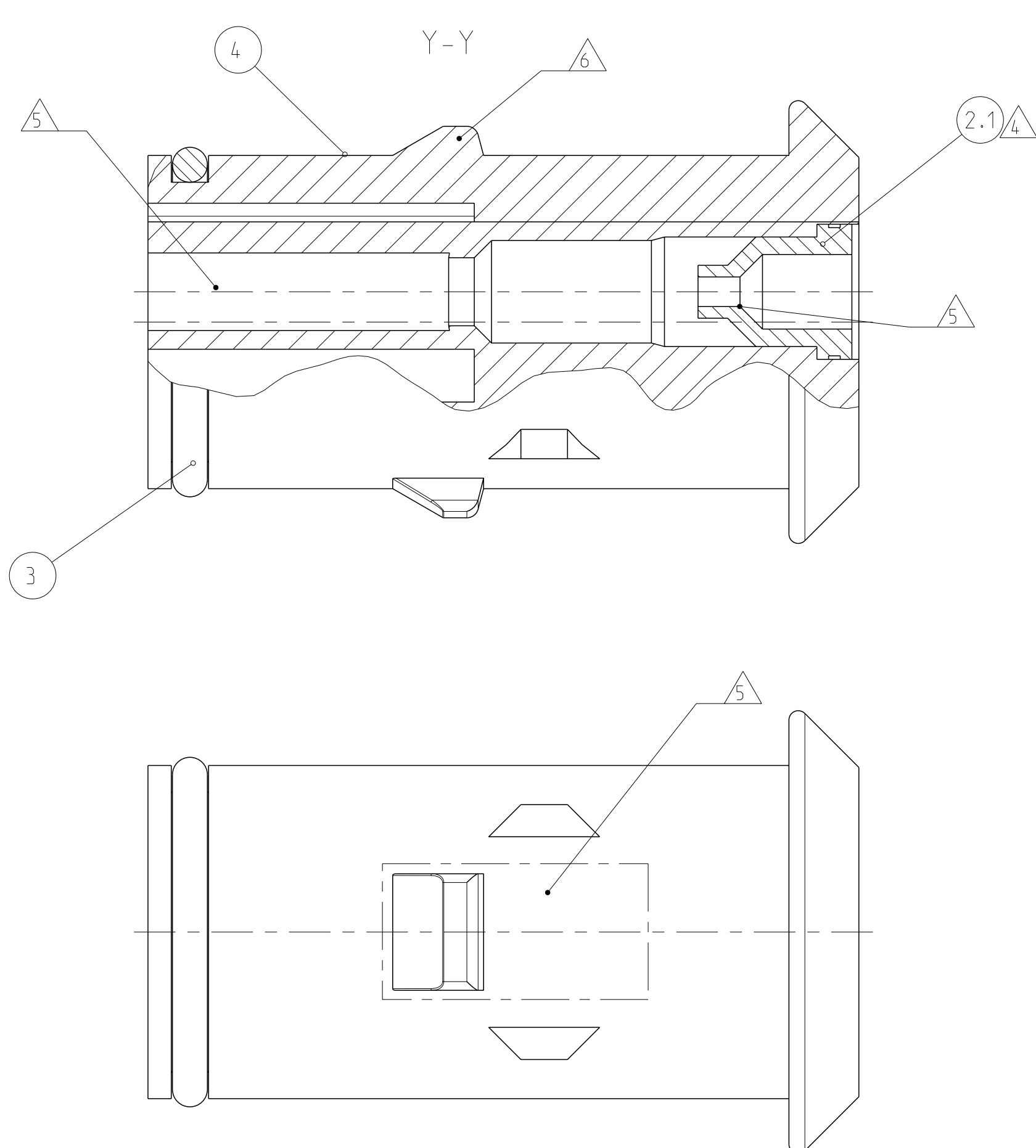
---

3:1

LOC	DIST	REVISIONS						
FM	-	P	LTR	DESCRIPTION	DATE	OWN	APVD	
		H1	SEE PCN EG00-0656-97		28MAY97	CD	AM	
		H2	ECR-12-013691		02AUG2012	GB	SZG	
		H3	Drawing update, ECR-15-002210		05MAR2015	GB	SZG	

H2	OBSOLETE			SEAL 	NEOPRENE	GREY	3	2.1
	2-826886-2	H		O-RING	NEOPRENE	BLACK	1	3
				3 POS. SOCKET HOUSING	PA 6.6 GFV13	GREEN	1	4
	2-826886-1	H		SEAL 	NEOPRENE	BLACK	3	2.2
				O-RING	NEOPRENE	BLACK	1	3
				3 POS. SOCKET HOUSING	PA 6.6 GFV13	NATURAL	1	4
	1-826886-9	H		SEAL 	NEOPRENE	GREY	3	2.1
				O-RING	NEOPRENE	BLACK	1	3
				3 POS. SOCKET HOUSING	PA 6.6 GFV13	NATURAL	1	4
	1-826886-8	H		SEAL 	NEOPRENE	BLACK	3	2.2
				O-RING	NEOPRENE	BLACK	1	3
				3 POS. SOCKET HOUSING	PA 6.6 GFV13	BLACK	1	4
	1-826886-7	H		SEAL 	NEOPRENE	BLACK	3	2.2
				O-RING	NEOPRENE	BLACK	1	3
				3 POS. SOCKET HOUSING	PA 6.6 GFV13	YELLOW	1	4
	1-826886-4	H		SEAL 	NEOPRENE	GREY	3	2.1
				O-RING	NEOPRENE	BLACK	1	3
				3 POS. SOCKET HOUSING	PA 6.6 GFV13	YELLOW	1	4
	1-826886-3	H		SEAL 	NEOPRENE	GREY	3	2.1
				O-RING	NEOPRENE	BLACK	1	3
				3 POS. SOCKET HOUSING	PA 6.6 GFV13	RED	1	4
	1-826886-2	H		SEAL 	NEOPRENE	GREY	3	2.1
				O-RING	NEOPRENE	BLACK	1	3
				3 POS. SOCKET HOUSING	PA 6.6 GFV13	BLACK	1	4
	1-826886-1	H		-	-	-	-	-
				O-RING	NEOPRENE	BLACK	1	3
				3 POS. SOCKET HOUSING	PA 6.6 GFV13	BLACK	1	4
	826886-7	H		SEAL 	NEOPRENE	BLACK	3	2.2
				O-RING	NEOPRENE	BLACK	1	3
				3 POS. SOCKET HOUSING	PA 6.6 GFV13	BLACK	1	1
	826886-6	H		SEAL 	NEOPRENE	GREY	3	2.1
				O-RING	NEOPRENE	BLACK	1	3
				3 POS. SOCKET HOUSING	PA 6.6 GFV13	YELLOW	1	1
	826886-5	H		SEAL 	NEOPRENE	GREY	3	2.1
				O-RING	NEOPRENE	BLACK	1	3
				3 POS. SOCKET HOUSING	PA 6.6 GFV13	RED	1	1
	826886-4	H		SEAL 	NEOPRENE	GREY	3	2.1
				O-RING	NEOPRENE	BLACK	1	3
				3 POS. SOCKET HOUSING	PA 6.6 GFV13	BLACK	1	1
	826886-1	H		-	-	-	-	-
				O-RING	NEOPRENE	BLACK	1	3
				3 POS. SOCKET HOUSING	PA 6.6 GFV13	BLACK	1	1
	ASSY NO	REV.		DESCRIPTION	MATERIAL	COLOUR	QTY.	ITEM NO


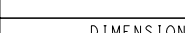
1-...2 wie gezeichnet  
AS SHOWN



**ACHTUNG !**  
Eine einwandfreie Funktion dieser Stecker kann nur bei Verwendung von Original-TEC-Teilen und genauer Einhaltung der Verarbeitungs- vor- schriften garantiert werden.

**CAUTION !**

A faultless operation of this connectors can be guaranteed only if original TEC parts are used and exact observance of processing specifications.

THIS DRAWING IS A CONTROLLED DOCUMENT.		DWG. 120C 1982 120ADMSK1 CHK. 250C 1982 W. ENDLING		 TE Connectivity	
DIMENSIONS: mm		TOLERANCES UNLESS OTHERWISE SPECIFIED: ±0.2mm		NAME 3POS. ECONOSEAL SOCKET-HOUSING ASS'Y	
		0 PLC ± 1 PLC ± 2 PLC ± 3 PLC ± 4 PLC ±			
		APD PRODUCT SPEC APPLICATION SPEC			
		SIZE CAGE CODE DRAWING NO			
MATERIAL SEE LIST		WEIGHT Customer Drawing		RESTRICTED TO A 1 00779 ©=826886 SCALE 5:1 SHEET 1 of 1 REV H3	