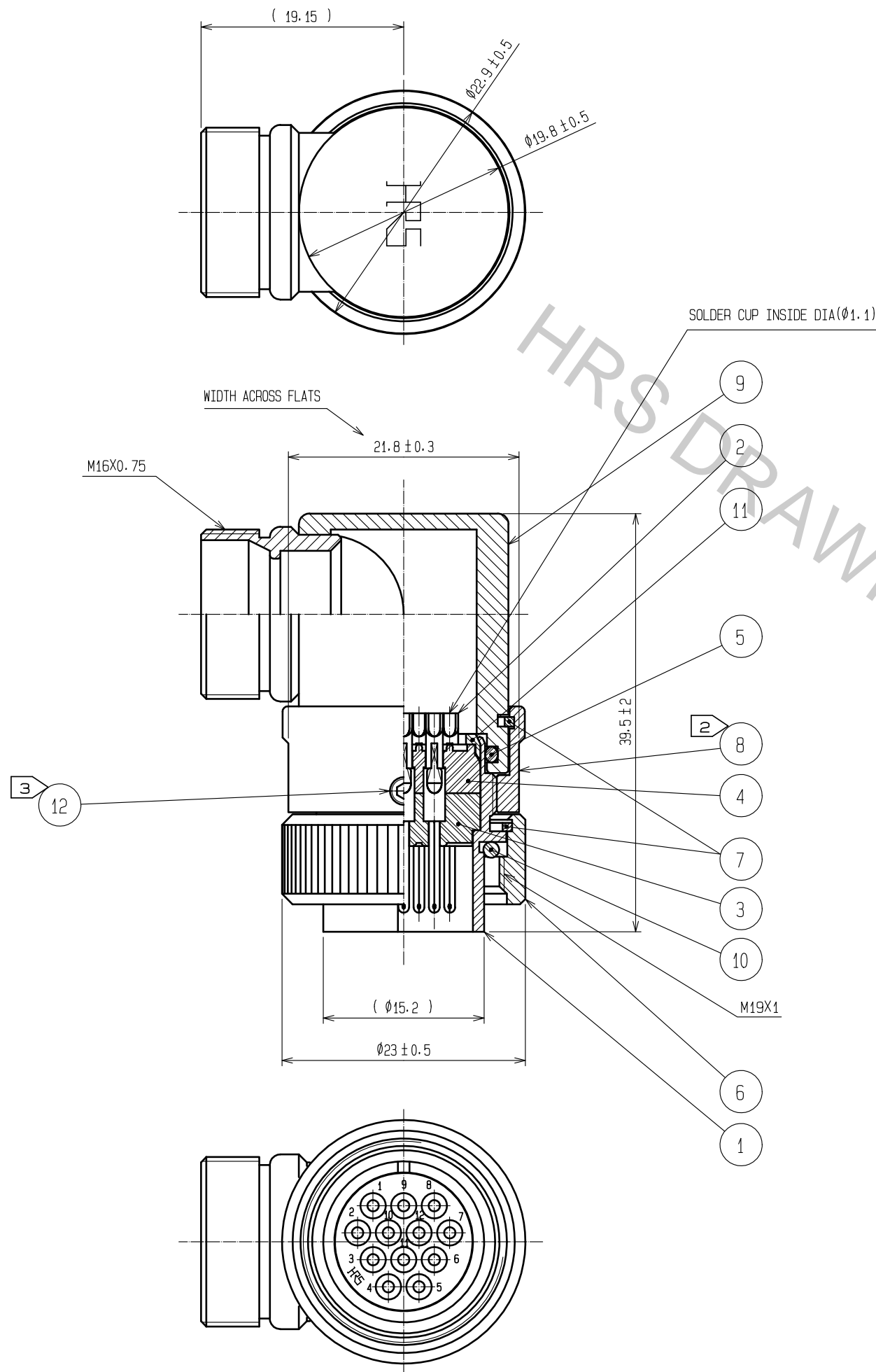


Sep.1.2018 Copyright 2018 HIROSE ELECTRIC CO., LTD. All Rights Reserved.
In case that the application demands a high level of reliability, such as automotive,
please contact a company representative for further information.



- NOTES
- 1 ROTATION EXAMPLES OF REF. NOS. ①, ⑧ AND ⑨ ARE SHOWN.
 - ② THE RECOMMENDED TIGHTEN TORQUE OF REF. NO. ⑧ TO BE 3 TO 4 N·m.
ADHESIVE LOCTITE 243, OR EQUIVALENT IS RECOMMENDED TO PREVENT REF. NO. ⑧ FROM LOOSENING.
 - ③ THE RECOMMENDED TIGHTEN TORQUE OF REF. NO. ⑫ TO BE 0.2 TO 0.3 N·m.
ADHESIVE LOCTITE 243, OR EQUIVALENT IS RECOMMENDED TO PREVENT REF. NO. ⑫ FROM LOOSENING.
 - ④ THIS PRODUCT TO BE USED WITH CABLECLAMP, JR13WCC-*(72).
* DESIGNATE DIAMETER(mm) OF APPLICABLE CABLE.

6	BRASS	NICKEL PLATING		12	STAINLESS STEEL		
5	ACRYLONITRILE-BUTADIENE RUBBER	(GRAY)		11	POLYACETAL	(WHITE)	
4	DIALLYL PHTHALATE	(BLACK) UL94V-0		10	ACRYLONITRILE-BUTADIENE RUBBER	(GRAY)	
3	DIALLYL PHTHALATE	(BLACK) UL94V-0		9	BRASS	NICKEL PLATING	
2	COPPER ALLOY	SILVER PLATING 2μm min.		8	BRASS	NICKEL PLATING	
1	BRASS	NICKEL PLATING		7	PHOSPHOR BRONZE	NICKEL PLATING	
NO.	MATERIAL	FINISH . REMARKS		NO.	MATERIAL	FINISH . REMARKS	
<div>UNITS mm</div> <div></div> <div>HRS HIROSE ELECTRIC CO., LTD.</div>	<div>SCALE 2 : 1</div> <div></div>	COUNT	DESCRIPTION OF REVISIONS		DESIGNED	CHECKED	DATE
		1	DIS-C-00002192		HY. KISHI	HY. KOBAYASHI	18. 04. 10
		APPROVED : HY. KOBAYASHI 18. 02. 27		DRAWING NO. EDC-113196-31-00			
		CHECKED : HY. KOBAYASHI 18. 02. 27		PART NO. RM15WTL P-12P(31)			
		DESIGNED : HY. KISHI 18. 02. 26		CODE NO. CL109-0997-9-31			
DRAWN : HY. KISHI 18. 02. 26		<div></div> <div></div>					