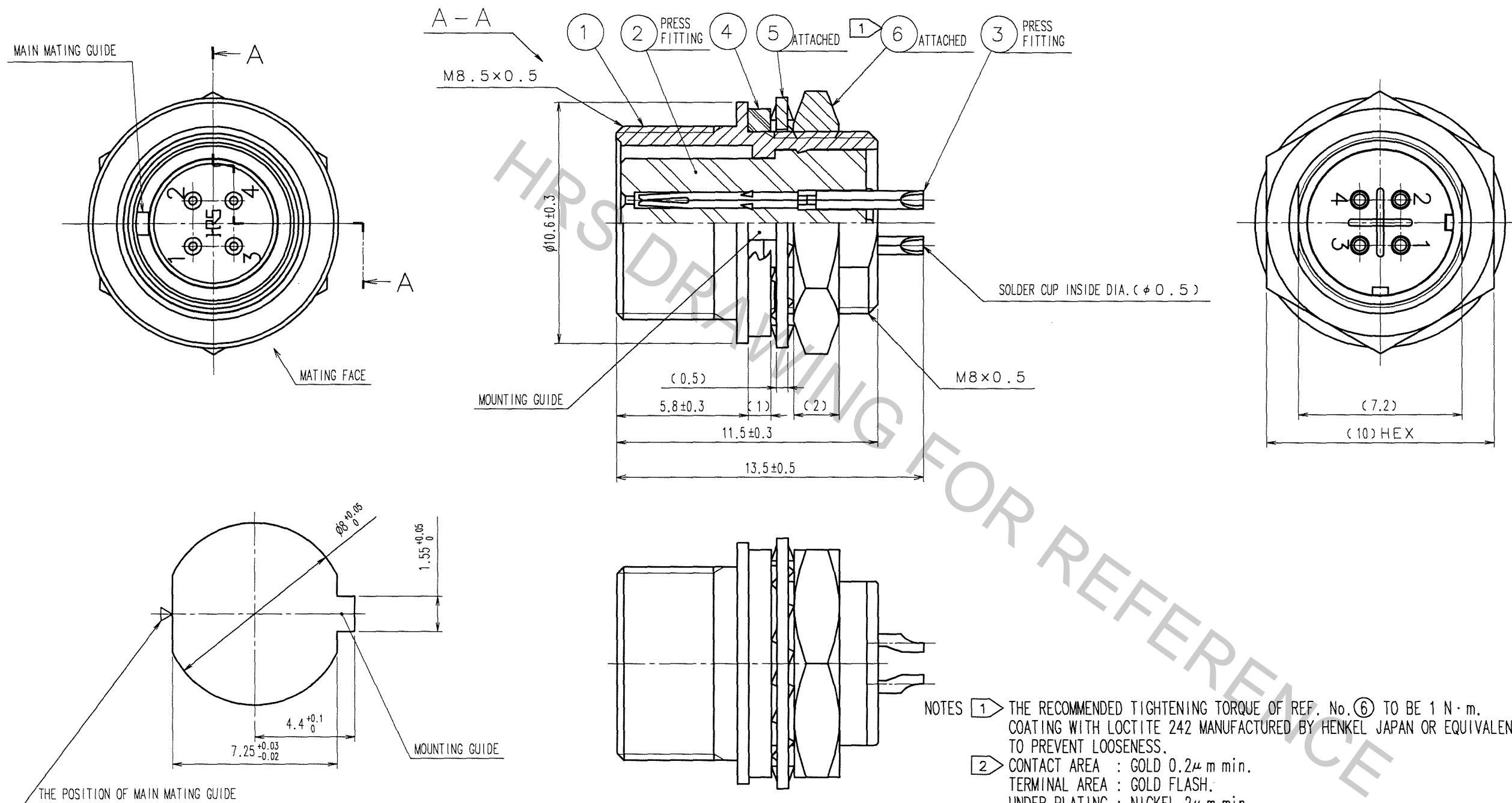


Sep. 1.2018 Copyright 2018 HIROSE ELECTRIC CO., LTD. All Rights Reserved.

In case that the application demands a high level of reliability, such as automotive, please contact a company representative for further information.

| | COUNT | DESCRIPTION OF REVISIONS | BY | CHKD | DATE | | COUNT | DESCRIPTION OF REVISIONS | BY | CHKD | DATE |
|---|-------|--------------------------|----|------|------|---|-------|--------------------------|----|------|------|
| △ | | | | | . . | △ | | | | | . . |
| △ | | | | | . . | △ | | | | | . . |
| △ | | | | | . . | △ | | | | | . . |





PANEL CUTOUT FROM MATING FACE
PANEL THICKNESS = 0.7 TO 2

- NOTES ① THE RECOMMENDED TIGHTENING TORQUE OF REF. No. ⑥ TO BE 1 N·m.
COATING WITH LOCTITE 242 MANUFACTURED BY HENKEL JAPAN OR EQUIVALENT IS RECOMMENDED
TO PREVENT LOOSENESS.
- ② CONTACT AREA : GOLD 0.2μm min.
TERMINAL AREA : GOLD FLASH;
UNDER PLATING : NICKEL 2μm min.

| | | | | | |
|-----|-----------------------|-----------------------------|-----|---------------------------|-----------------|
| 3 | PHOSPHOR BRONZE | 2 | 6 | BRASS | NICKEL PLATING |
| 2 | POLYPHENYLENE SULFIDE | (BLACK) UL94V-0 | 5 | PHOSPHOR BRONZE | NICKEL PLATING |
| 1 | ZINC ALLOY | MATTE FINISH NICKEL PLATING | 4 | ETHYLENE PROPYLENE RUBBER | (BLACK) |
| NO. | MATERIAL | FINISH, REMARKS | NO. | MATERIAL | FINISH, REMARKS |

| | | | | | |
|----------------------|---------------------------|---------------------------|-----------------------|----------------------|----------|
| CODE NO. (OLD) CL | DRAWN | DESIGNED | CHECKED | APPROVED | RELEASED |
| | H. Kawashima '06.10.14 | H. Kawashima '06.10.14 | E. Kurui '06.10.14 | M. Sato '06.10.14 | . |

| | | | |
|---|--|-----------------------------|----------------|
|  | DRAWING NO. | PART NO. | <div>1/1</div> |
| | SCALE 5 : 1 | EDC3-048671-73 | |
| UNITS mm |  HIROSE ELECTRIC CO., LTD | CODE NO. CL125-0007-4-73 | <div>1/1</div> |