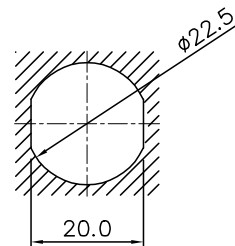
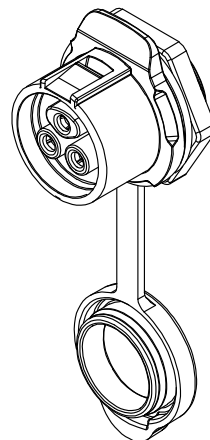
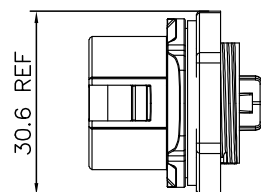
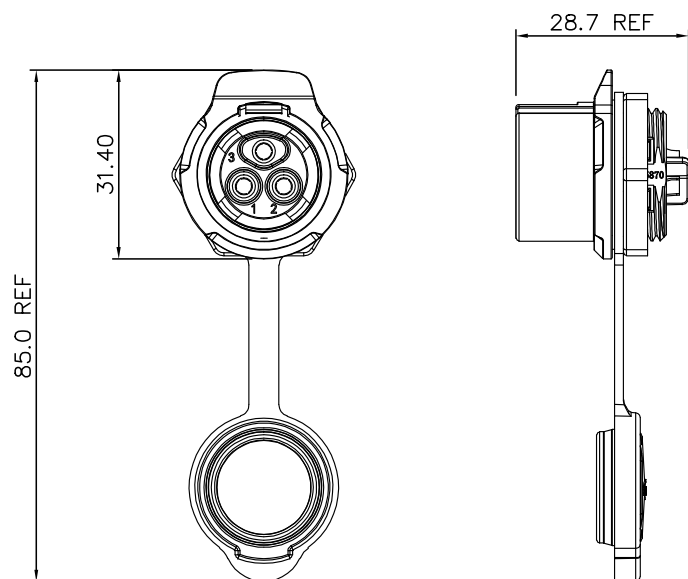


REV	MODIFICATION	DATE	DRAW	APPROVE










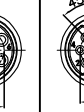

RECOMMENDED PANEL HOLE

SPECIFICATIONS:
Current Rating: PIN Number-A 20A; PIN Number-B 12A; Number-C 5A;
Operating Voltage: 500V MAX.
Voltage Rating: 2500V MAX.
Contact Resistance: 5.0mΩ MAX.
Cable OD: Ø4.0–Ø11.5mm
Waterproof Standard: IP67



2	Contact	Phosphor bronze	Gold Ptd.	2-12
1	Housing	PBT		2
No.	Description	Material	Treat	Q'ty

-TOLERANCES- UNLESS OTHERWISE SPECIFIED		 Lumberg <i>passion for connections</i>		
X.X ±0.25	X* REF ± 5°			
X.XX ±0.15	X.* ± 3°			
X.XXX±0.05	X*X' ± 1°			
DRAWN	ROBIN	02/01/2018	TITLE: LP20 Serie 272I Female Socket With Single Hole All Plastic	
CHECKED				
APPROVED			PRODUCT NO. ---	
SCALE:	AS SHOWN	UNIT: mm	FILE NAME: ---	
PORJ. 		SIZE A4	REV. A	SHEET. A/A

TYPE	PIN NUMBER-A			PIN NUMBER-B		PIN NUMBER-C	
P/N:	0272 02	0272 03	0272 04	0272 05	0272 07	0272 09	0272 12
Female Contact Face View							
	7.00	7.60	8.40	8.60	9.00	8.00	9.10
Number Of Contact	2	3	4	5	7	9	12