



Dura|Mate™

Circular Plastic Connectors for Heavy Duty Applications

Reliable Signal and Power Solutions



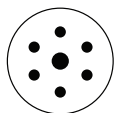


Circular Plastic Connectors for Heavy Duty Applications Available in Size 24 with 7, 19, 23, 29 and 31 Insert Arrangements

The Amphenol Dura|Mate™ environmentally sealed multi-pin thermoplastic circular connector series provides an economical quick-connect bayonet locking system manufactured to withstand the challenges and complexities of harsh environment off-road applications.

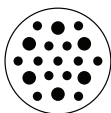


While maintaining compatibility with existing shell size 24 industry standard designs, ease of use was exceeded through enhanced ergonomics using an easy grip coupling system and visual and tactile indicators ensuring reliable mating confirmation. Wire management improvements include two different back shell systems that thread onto the rear of the connectors to provide strain relief and additional wire seal protection. The low cost, tie wrap option and the fully enclosed back shell are interchangeable for specific application requirements.



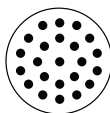
24-7

6 Size 12
1 Size 8 **RADSOK®**



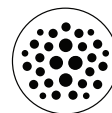
24-19

6 Size 12
13 Size 16



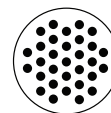
24-23

23 Size 16



24-29

4 Size 12
19 Size 16
6 Size 20



24-31

31 Size 16



Its rugged high performance capability is ideal for panel mount or in-line heavy-duty applications such as commercial vehicle, agriculture, construction or marine installations.

Features and Benefits

- Polarized for proper mating of connector halves
- High density signal and mixed power insert configurations
- Available in Size 24 with 5 insert arrangements (7, 19, 23, 29, 31)
- Operating temperature range: -55C to +125C
- High current configurations incorporating revolutionary **RADSOK®** contacts
- High strength impact resistant & lightweight thermoplastic housings
- Contacts available in economical reel-mounted high volume machine termination or in machined loose-piece form.
- Low insertion force stamped terminals offer improved manufacturing efficiencies
- Wire entry sealing available in three separate ranges for discrete wire applications:

Recommended Wire Insulation Overall Diameter (OD)			
Contact Size	Normal Seal	Thin Seal	Reduced Seal
20	N/A	N/A	1.02mm (.040") - 2.41mm (.095")
16	2.54mm (.100") - 3.40mm (.134")	2.23mm (.088") - 3.40mm (.134")	1.35mm (.053") - 3.05mm (.120")
12	3.43mm (.135") - 4.32mm (.170")	N/A	2.46mm (.097") - 4.01mm (.158")
8	4.83mm (.190") - 6.10mm (.240")	N/A	N/A

- Standard WTA(Wide Thread Adapter) provides maximum access to rear grommet and improved serviceability.
- Engineered rapid and secure mating system achieves IP67 protection from ingress of dust, water mud and other contaminants
- Redundant sealing features consisting of durable high temperature silicone provide barrier from lubricating oils, hydraulic fluids and fossil fuels.
- Rigid back shells maintain a compression-fit design to resist maximum pull-out forces and facilitate strain-relief for jacketed cable ranges.

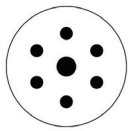
Performance Specifications

Shell Specifications

Current Rating per Contact	Size 8, 80A; Size 12, 25A; Size 16, 13A; Size 20, 7.5A	Coupling Nut	Thermoplastic
Operating Temperature	-55°C to +125°C	Insulation Insert	Thermoplastic
Dielectric Withstanding Voltage	Current Leakage - 12 milliamp at 1500 VAC	Seal	Silicone Rubber
Degree of Protection	IP67	Color	Black
Mating Cycle Durability	100 Cycles	Contact	Common System
RoHS	Compliant		

- Utilizes industry standard contact system
- Environmentally-sealed to IP67 and vibration resistant
- Wide threaded collar ring for increased serviceability and connector access (1)
- Highly visible indicators for quick alignment and 100% positive mating (2)
- Enclosed 1-piece threaded backshell with low-cost strain relief (3)
- Optional 2-piece threaded backshell with compression nut (4)
- Contact removal tools (5)
- **RADSOK®** contacts (6)
- Panel Nut, Size 24 (7)

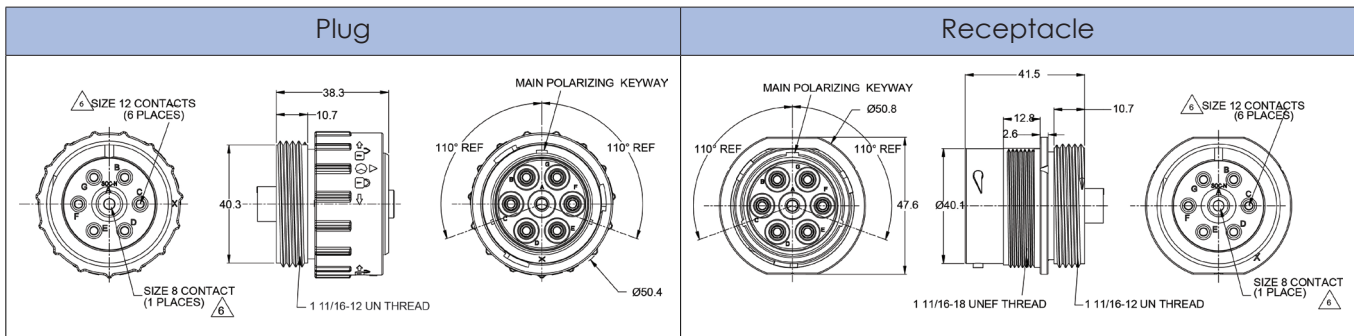




Shell Size
24

7 Position Plugs & Receptacles

Contact Size:	12	8
Contact Qty:	6	1 RADSOK®
Seal OD Range: NORMAL SEAL	3.43mm (.135") - 4.32mm (.170")	4.83mm (.190") - 6.10mm (.240")
Wire Range (AWG):	10-14AWG	7-10AWG
Amperage:	25	80

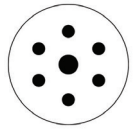


Standard and reverse terminal genders allows for custom polarization

<p>Part Number AHDP06-24-07SN-WTA</p> <p>Gender: Standard Contact: Socket</p> <p>Rear Seal Type: NORMAL, Green</p> <p>Description: Size 24 Plug with 7 positions, Socket, standard arrangement, normal seal, wide thread adapter</p> <p>Mating Part(s): AHDP04-24-07PN-WTA</p> <p>See Receptacle column on this page for more details</p>	<p>Part Number AHDP04-24-07PN-WTA</p> <p>Gender: Standard Contact: Pin</p> <p>Rear Seal Type: NORMAL, Green</p> <p>Description: Size 24 Receptacle with 7 positions, Pin, standard arrangement, normal seal, wide thread adapter</p> <p>Mating Part(s): AHDP06-24-07PN-WTA</p> <p>See Receptacle column on this page for more details</p>
<p>Part Number AHDP06-24-07PN-WTA</p> <p>Gender: Reversed Contact: Pin</p> <p>Rear Seal Type: NORMAL, Green</p> <p>Description: Size 24 Plug with 7 positions, Pin, reverse arrangement, normal seal, wide thread adapter</p> <p>Mating Part(s): AHDP04-24-07SN-WTA</p> <p>See Receptacle column on this page for more details</p>	<p>Part Number AHDP04-24-07SN-WTA</p> <p>Gender: Reversed Contact: Socket</p> <p>Rear Seal Type: NORMAL, Green</p> <p>Description: Size 24 Receptacle with 7 positions, Socket, reverse arrangement, normal seal, wide thread adapter</p> <p>Mating Part(s): AHDP06-24-07SN-WTA</p> <p>See Receptacle column on this page for more details</p>

For custom insert configurations, please consult factory

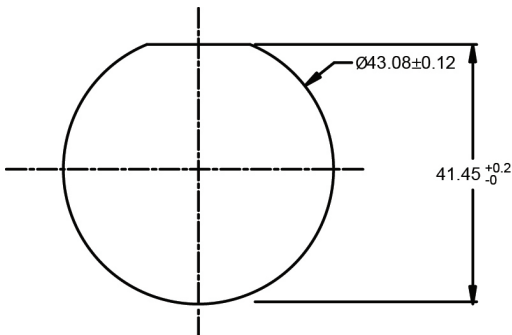
7 Position Plugs & Receptacles - Contacts



Shell Size
24

Contact Size	Part #	Type	(Pin/Socket)	Wire Range (AWG)	AMP	Plating
8	SC000345	Machined Radsok ®	Pin	7-10	80	Silver
8	SC000346	Machined Radsok ®	Socket	7-10	80	Silver
12	AT60-204-12141	Machined	Pin	12-14	25	Nickel
12	AT60-220-1231	Machined	Pin	12-14	25	Gold
12	AT62-203-12141	Machined	Socket	12-14	25	Nickel
12	AT62-210-1231	Machined	Socket	12-14	25	Gold
12	AT60-12-0166	Stamped & Formed	Pin	12-14	25	Nickel
12	AT60-12-0144	Stamped & Formed	Pin	12-14	25	Gold
12	AT60-12-0222	Stamped & Formed	Pin	12-14	25	Nickel
12	AT60-12-0244	Stamped & Formed	Pin	12-14	25	Gold
12	AT62-12-0166	Stamped & Formed	Socket	12-14	25	Nickel
12	AT62-12-0144	Stamped & Formed	Socket	12-14	25	Gold
12	AT62-12-0222	Stamped & Formed	Socket	12-14	25	Nickel
12	AT62-12-0244	Stamped & Formed	Socket	12-14	25	Gold

Recommended Panel Mounting Hole
Recommended panel thickness: 1.6 to 4.7mm



Part Number
AHDP24-PN01

Panel Nut, Shell Size 24

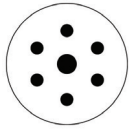


Part Number
AT14-001-2486

Metal Lock Washer
Shell Size 24



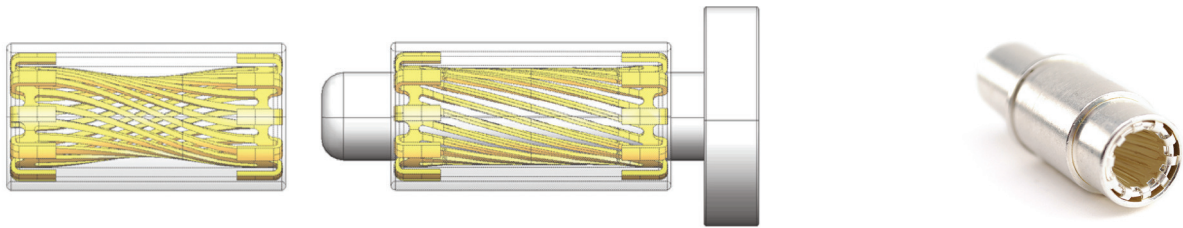
For custom insert configurations, please consult factory



7 Position Plugs & Receptacles - Contacts

Shell Size
24

RADSOK® Contacts



The RADSOK® Design

- Socket cylinder within female contact has several equally spaced longitudinal beams twisted into a hyperbolic shape
- As a male pin is inserted, axial members in the female half deflect, imparting high current flow across the connection with minimal voltage loss
- The hyperbolic, stamped grid configuration ensures a large, coaxial, face-to-face surface area engagement
- Ideal for crimp termination applications requiring repeated mating cycles and high current with a low multi-volt drop

RADSOK® Technical Data

High Reliability

Unique **RADSOK®** design and construction technology creates an electrical contact interface that exceeds typical interconnect requirements. Applications in Aerospace, Medical, Industrial, Automotive, Mining, Offshore and other harsh environments depend on the high reliability of Amphenol **RADSOK®** technology.

Low Contact Engagement/Separation Forces

The hyperbolic lamella socket contact construction distributes normal forces over a high percentage of the mating surface. This creates a smooth, even engagement effort. This force distribution also contributes to excellent performance in vibration applications with resistance to typical fretting corrosion.

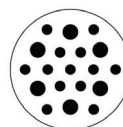
Low Contact Resistance

The large interface between the socket lamella and pin surface result in very low contact resistance, enabling the **RADSOK®** contacts high current ratings compared to traditional power contact designs.

High Mating Cycle Durability

RADSOK® contacts with typical silver plating finishes have demonstrated survival of 10,000 mating cycles. Even with continuous exposure to harsh environmental abuse (salt, sand and high humidity), **RADSOK®** contacts have been tested to maintain low contact resistance beyond 10,000 mating cycles.

19 Position Plugs & Receptacles



Shell Size
24

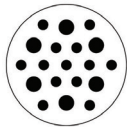
Contact Size:	12	16
Contact Qty:	6	13
Seal OD Range:		
NORMAL SEAL	3.43mm (.135")-4.32mm (.170")	2.54mm (.100")-3.40mm (.134")
REDUCED SEAL	2.46mm (.097")-4.01mm (.158")	1.35mm (.053")-3.05mm (.120")
Wire Range:	10-14AWG	14-20AWG
Amperage:	25	13

Plug	Receptacle

Standard and reverse terminal genders allows for custom polarization

<table> <tr> <th>Part Number</th><th>Gender: Standard Contact: Socket</th></tr> <tr> <td>AHDP06-24-19SN-WTA</td><td></td></tr> <tr> <td colspan="2">Rear Seal Type: NORMAL, Green</td></tr> <tr> <td colspan="2">Description: Size 24 Plug with 19 positions, Socket, standard arrangement, normal seal, wide thread adapter</td></tr> <tr> <td colspan="2">Mating Part(s): AHDP04-24-19PN-WTA AHDP04-24-19PR-WTA</td></tr> <tr> <td colspan="2">See Receptacle column on this page for more details</td></tr> </table>	Part Number	Gender: Standard Contact: Socket	AHDP06-24-19SN-WTA		Rear Seal Type: NORMAL, Green		Description: Size 24 Plug with 19 positions, Socket, standard arrangement, normal seal, wide thread adapter		Mating Part(s): AHDP04-24-19PN-WTA AHDP04-24-19PR-WTA		See Receptacle column on this page for more details		<table> <tr> <th>Part Number</th><th>Gender: Standard Contact: Pin</th></tr> <tr> <td>AHDP04-24-19PN-WTA</td><td></td></tr> <tr> <td colspan="2">Rear Seal Type: NORMAL, Green</td></tr> <tr> <td colspan="2">Description: Size 24 Receptacle with 19 positions, Pin, standard arrangement, normal seal, wide thread adapter</td></tr> <tr> <td colspan="2">Mating Part(s): AHDP06-24-19SN-WTA AHDP06-24-19SR-WTA</td></tr> <tr> <td colspan="2">See Plug column on this page for more details</td></tr> </table>	Part Number	Gender: Standard Contact: Pin	AHDP04-24-19PN-WTA		Rear Seal Type: NORMAL, Green		Description: Size 24 Receptacle with 19 positions, Pin, standard arrangement, normal seal, wide thread adapter		Mating Part(s): AHDP06-24-19SN-WTA AHDP06-24-19SR-WTA		See Plug column on this page for more details	
Part Number	Gender: Standard Contact: Socket																								
AHDP06-24-19SN-WTA																									
Rear Seal Type: NORMAL, Green																									
Description: Size 24 Plug with 19 positions, Socket, standard arrangement, normal seal, wide thread adapter																									
Mating Part(s): AHDP04-24-19PN-WTA AHDP04-24-19PR-WTA																									
See Receptacle column on this page for more details																									
Part Number	Gender: Standard Contact: Pin																								
AHDP04-24-19PN-WTA																									
Rear Seal Type: NORMAL, Green																									
Description: Size 24 Receptacle with 19 positions, Pin, standard arrangement, normal seal, wide thread adapter																									
Mating Part(s): AHDP06-24-19SN-WTA AHDP06-24-19SR-WTA																									
See Plug column on this page for more details																									
<table> <tr> <th>Part Number</th><th>Gender: Standard Contact: Socket</th></tr> <tr> <td>AHDP06-24-19SR-WTA</td><td></td></tr> <tr> <td colspan="2">Rear Seal Type: REDUCED SEAL, Blue</td></tr> <tr> <td colspan="2">Description: Size 24 Plug with 19 positions, Socket, standard arrangement, RD01 reduced diameter seal, wide thread adapter</td></tr> <tr> <td colspan="2">Mating Part(s): AHDP04-24-19PN-WTA AHDP04-24-19PR-WTA</td></tr> <tr> <td colspan="2">See Receptacle column on this page for more details</td></tr> </table>	Part Number	Gender: Standard Contact: Socket	AHDP06-24-19SR-WTA		Rear Seal Type: REDUCED SEAL, Blue		Description: Size 24 Plug with 19 positions, Socket, standard arrangement, RD01 reduced diameter seal, wide thread adapter		Mating Part(s): AHDP04-24-19PN-WTA AHDP04-24-19PR-WTA		See Receptacle column on this page for more details		<table> <tr> <th>Part Number</th><th>Gender: Standard Contact: Pin</th></tr> <tr> <td>AHDP04-24-19PR-WTA</td><td></td></tr> <tr> <td colspan="2">Rear Seal Type: REDUCED SEAL, Blue</td></tr> <tr> <td colspan="2">Description: Size 24 Receptacle with 19 positions, Pin, standard arrangement, RD01 reduced diameter, wide thread adapter</td></tr> <tr> <td colspan="2">Mating Part(s): AHDP06-24-19SN-WTA AHDP06-24-19SR-WTA</td></tr> <tr> <td colspan="2">See Plug column on this page for more details</td></tr> </table>	Part Number	Gender: Standard Contact: Pin	AHDP04-24-19PR-WTA		Rear Seal Type: REDUCED SEAL, Blue		Description: Size 24 Receptacle with 19 positions, Pin, standard arrangement, RD01 reduced diameter, wide thread adapter		Mating Part(s): AHDP06-24-19SN-WTA AHDP06-24-19SR-WTA		See Plug column on this page for more details	
Part Number	Gender: Standard Contact: Socket																								
AHDP06-24-19SR-WTA																									
Rear Seal Type: REDUCED SEAL, Blue																									
Description: Size 24 Plug with 19 positions, Socket, standard arrangement, RD01 reduced diameter seal, wide thread adapter																									
Mating Part(s): AHDP04-24-19PN-WTA AHDP04-24-19PR-WTA																									
See Receptacle column on this page for more details																									
Part Number	Gender: Standard Contact: Pin																								
AHDP04-24-19PR-WTA																									
Rear Seal Type: REDUCED SEAL, Blue																									
Description: Size 24 Receptacle with 19 positions, Pin, standard arrangement, RD01 reduced diameter, wide thread adapter																									
Mating Part(s): AHDP06-24-19SN-WTA AHDP06-24-19SR-WTA																									
See Plug column on this page for more details																									

For custom insert configurations, please consult factory



19 Position Plugs & Receptacles - Contacts

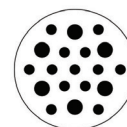
Shell Size
24

Plug		Receptacle	
Part Number AHDP06-24-19PN-WTA	Gender: Reversed Contact: Pin	Part Number AHDP04-24-19SN-WTA	Gender: Reversed Contact: Socket
Rear Seal Type: NORMAL, Green		Rear Seal Type: NORMAL, Green	
Description: Size 24 Plug with 19 positions, Pin, reverse arrangement, normal seal, wide thread adapter		Description: Size 24 Receptacle with 19 positions, Socket, reverse arrangement, normal seal, wide thread adapter	
Mating Part(s): AHDP04-24-19SN-WTA AHDP04-24-19SR-WTA		Mating Part(s): AHDP06-24-19PN-WTA AHDP06-24-19PR-WTA	
See Receptacle column on this page for more details		See Plug column on this page for more details	
Part Number AHDP06-24-19PR-WTA	Gender: Reversed Contact: Pin	Part Number AHDP04-24-19SR-WTA	Gender: Reversed Contact: Socket
Rear Seal Type: REDUCED SEAL, Blue		Rear Seal Type: REDUCED SEAL, Blue	
Description: Size 24 Plug with 19 positions, Pin, reverse arrangement, RD01 reduced diameter seal, wide thread adapter		Description: Size 24 Receptacle with 19 positions, Socket, reverse arrangement, RD01 reduced diameter, wide thread adapter	
Mating Part(s): AHDP04-24-19SN-WTA AHDP04-24-19SR-WTA		Mating Part(s): AHDP06-24-19PN-WTA AHDP06-24-19PR-WTA	
See Receptacle column on this page for more details		See Plug column on this page for more details	

19 Position Plugs & Receptacles- Contacts

Contact Size	Part #	Type	(Pin/Socket)	Wire Range (AWG)	AMP	Plating
12	AT60-220-1231	Machined	Pin	12-14	25	Gold
12	AT60-204-12141	Machined	Pin	12-14	25	Nickel
12	AT62-210-1231	Machined	Socket	12-14	25	Gold
12	AT62-203-12141	Machined	Socket	12-14	25	Nickel
12	AT60-12-0244	Stamped & Formed	Pin	12-14	25	Gold
12	AT60-12-0166	Stamped & Formed	Pin	12-14	25	Nickel
12	AT60-12-0144	Stamped & Formed	Pin	12-14	25	Gold
12	AT60-12-0222	Stamped & Formed	Pin	12-14	25	Nickel
12	AT62-12-0144	Stamped & Formed	Socket	12-14	25	Gold
12	AT62-12-0222	Stamped & Formed	Socket	12-14	25	Nickel
12	AT62-12-0244	Stamped & Formed	Socket	12-14	25	Gold
12	AT62-12-0166	Stamped & Formed	Socket	12-14	25	Nickel

19 Position Plugs & Receptacles- Contacts (con't)



Shell Size
24

Contact Size	Part #	Type	(Pin/Socket)	Wire Range (AWG)	AMP	Plating
16	AT60-215-1631	Machined	Pin	14	13	Gold
16	AT60-215-16141	Machined	Pin	14	13	Nickel
16	AT60-202-1631	Machined	Pin	16-20	13	Gold
16	AT60-202-16141	Machined	Pin	16-20	13	Nickel
16	AT62-209-1631	Machined	Socket	14	13	Gold
16	AT62-209-16141	Machined	Socket	14	13	Nickel
16	AT62-201-1631	Machined	Socket	16-20	13	Gold
16	AT62-201-16141	Machined	Socket	16-20	13	Nickel
16	AT60-14-0144	Stamped & Formed	Pin	14-16	13	Gold
16	AT60-14-0122	Stamped & Formed	Pin	14-16	13	Nickel
16	AT60-16-0144	Stamped & Formed	Pin	16-18	13	Gold
16	AT60-16-0122	Stamped & Formed	Pin	16-18	13	Nickel
16	AT60-16-0644	Stamped & Formed	Pin	18-20	13	Gold
16	AT60-16-0622	Stamped & Formed	Pin	18-20	13	Nickel
16	AT62-14-0144	Stamped & Formed	Socket	14-16	13	Gold
16	AT62-14-0122	Stamped & Formed	Socket	14-16	13	Nickel
16	AT62-16-0144	Stamped & Formed	Socket	16-18	13	Gold
16	AT62-16-0122	Stamped & Formed	Socket	16-18	13	Nickel
16	AT62-16-0644	Stamped & Formed	Socket	18-20	13	Gold
16	AT62-16-0622	Stamped & Formed	Socket	18-20	13	Nickel

Part Number
AHDP24-PN01

Panel Nut, Shell Size 24

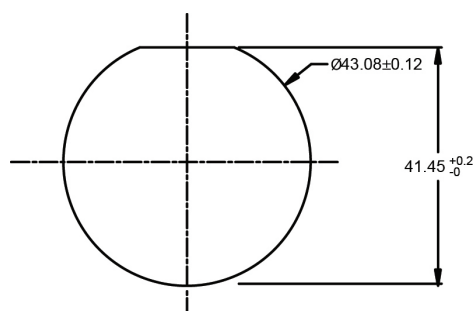


Part Number
AT14-001-2486

Metal Lock Washer
Shell Size 24



Recommended Panel Mounting Hole
Recommended panel thickness: 1.6 to 4.7mm





Contact Size:	16
Contact Qty:	23
Seal OD Range:	
NORMAL SEAL	2.54mm (.100") - 3.40mm (.134")
REDUCED SEAL	1.35mm (.053") - 3.05mm (.120")
Wire Range:	14-20AWG
Amperage:	13

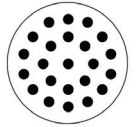
Standard and reverse terminal genders allows for custom polarization

Part Number AHDP04-24-23PN-WTA	Gender: Standard Contact: Pin
Rear Seal Type: NORMAL, Green	
Description: Size 24 Receptacle with 23 positions, Pin, standard arrangement, normal seal, wide thread adapter	
Mating Part(s): AHDP06-24-23SN-WTA AHDP06-24-23SR-WTA	
See Plug column on this page for more details	

Part Number AHDP04-24-23PR-WTA	Gender: Standard Contact: Pin
Rear Seal Type: REDUCED SEAL, Blue	
Description: Size 24 Receptacle with 23 positions, Pin, standard arrangement, RD01 reduced diameter seal, wide thread adapter	
Mating Part(s): AHDP06-24-23SN-WTA AHDP06-24-23SR-WTA	
See Plug column on this page for more details	

INDUSTRIAL@AMPHENOL
TRUSTED GLOBALLY

23 Position Plugs & Receptacles



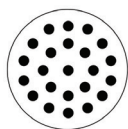
Shell Size
24

Plug		Receptacle	
Part Number AHDP06-24-23PN-WTA	Gender: Reversed Contact: Pin	Part Number AHDP04-24-23SN-WTA	Gender: Reversed Contact: Socket
Rear Seal Type: NORMAL, Green		Rear Seal Type: NORMAL, Green	
Description: Size 24 Plug with 23 positions, Pin, reverse arrangement, normal seal, wide thread adapter		Description: Size 24 Receptacle with 23 positions, Socket, reverse arrangement, normal seal, wide thread adapter	
Mating Part(s): AHDP04-24-23SN-WTA AHDP04-24-23SR-WTA		Mating Part(s): AHDP06-24-23PN-WTA AHDP06-24-23PR-WTA	
See Receptacle column on this page for more details		See Plug column on this page for more details	
Part Number AHDP06-24-23PR-WTA	Gender: Reversed Contact: Pin	Part Number AHDP04-24-23SR-WTA	Gender: Reversed Contact: Socket
Rear Seal Type: REDUCED SEAL, Blue		Rear Seal Type: REDUCED SEAL, Blue	
Description: Size 24 Plug with 23 positions, Pin, reverse arrangement, RD01 reduced diameter seal, wide thread adapter		Description: Size 24 Receptacle with 23 positions, Socket, reverse arrangement, RD01 reduced diameter seal, wide thread adapter	
Mating Part(s): AHDP04-24-23SN-WTA AHDP04-24-23SR-WTA		Mating Part(s): AHDP06-24-23PN-WTA AHDP06-24-23PR-WTA	
See Receptacle column on this page for more details		See Plug column on this page for more details	

23 Position Plugs & Receptacles - Contacts

Contact Size	Part #	Type	(Pin/Socket)	Wire Range (AWG)	AMP	Plating
16	AT60-202-16141	Machined	Pin	16-20	13	Nickel
16	AT60-202-1631	Machined	Pin	16-20	13	Gold
16	AT60-215-16141	Machined	Pin	14	13	Nickel
16	AT60-215-1631	Machined	Pin	14	13	Gold
16	AT62-201-16141	Machined	Socket	16-20	13	Nickel
16	AT62-201-1631	Machined	Socket	16-20	13	Gold
16	AT62-209-16141	Machined	Socket	14	13	Nickel
16	AT62-209-1631	Machined	Socket	14	13	Gold
16	AT60-14-0122	Stamped & Formed	Pin	14-16	13	Nickel
16	AT60-14-0144	Stamped & Formed	Pin	14-16	13	Gold
16	AT60-16-0122	Stamped & Formed	Pin	16-18	13	Nickel
16	AT60-16-0144	Stamped & Formed	Pin	16-18	13	Gold

For custom insert configurations, please consult factory

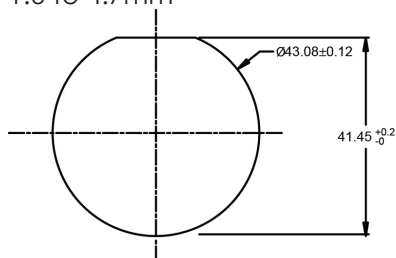


23 Position Plugs & Receptacles Contacts

Shell Size
24

Contact Size	Part #	Type	(Pin/Socket)	Wire Range (AWG)	AMP	Plating
16	AT60-16-0622	Stamped & Formed	Pin	18-20	13	Nickel
16	AT60-16-0644	Stamped & Formed	Pin	18-20	13	Gold
16	AT62-14-0122	Stamped & Formed	Socket	14-16	13	Nickel
16	AT62-14-0144	Stamped & Formed	Socket	14-16	13	Gold
16	AT62-16-0122	Stamped & Formed	Socket	16-18	13	Nickel
16	AT62-16-0144	Stamped & Formed	Socket	16-18	13	Gold
16	AT62-16-0622	Stamped & Formed	Socket	18-20	13	Nickel
16	AT62-16-0644	Stamped & Formed	Socket	18-20	13	Gold

Recommended Panel Mounting Hole
Recommended Panel Thickness:
1.6 to 4.7mm



Part Number

AHDP24-PN01

Panel Nut, Shell Size 24



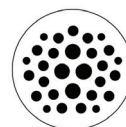
Part Number

AT14-001-2486

Metal Lock Washer
Shell Size 24

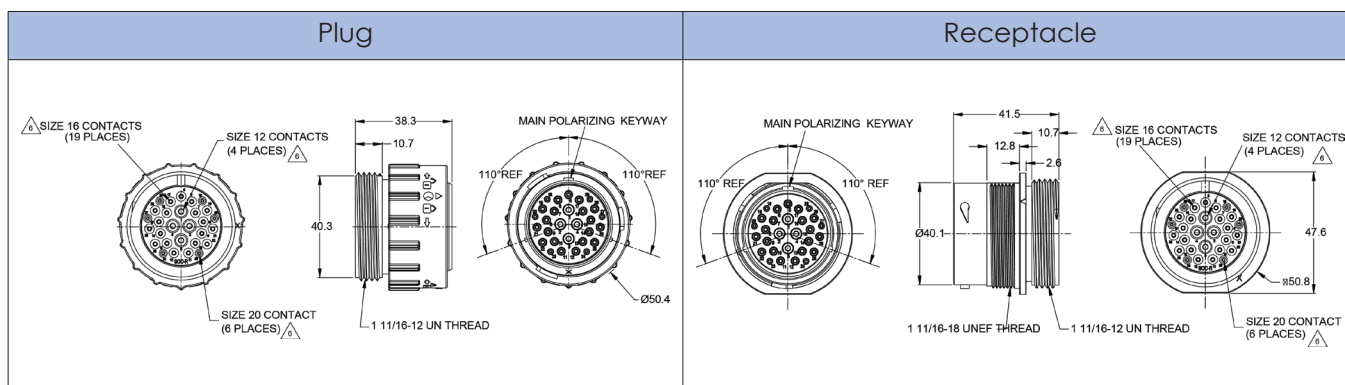


29 Position Plugs & Receptacles



Shell Size
24

Contact Size:	20	16	12
Contact Qty:	6	19	4
Seal OD Range:			
REDUCED SEAL	1.02mm (.040") - 2.41mm (.095")	1.35mm (.053") - 3.05mm (.120")	2.46mm (.097") - 4.01mm (.158")
Wire Range:	16-22AWG	14-20AWG	10-14AWG
Amperage:	7.5	13	25



Standard and reverse terminal genders allows for custom polarization

Part Number AHDP06-24-29SR-WTA	Gender: Standard Contact: Socket
---	-------------------------------------

Rear Seal Type: REDUCED SEAL, Blue

Description: Size 24 Plug with 29 positions, Socket standard arrangement, RD01 reduced diameter seal, wide thread adapter

Mating Part(s): AHDP04-24-29PR-WTA

See Receptacle column on this page for more details

Part Number AHDP04-24-29PR-WTA	Gender: Standard Contact: Pin
---	----------------------------------

Rear Seal Type: REDUCED SEAL, Blue

Description: Size 24 Receptacle with 29 positions, Pin, standard arrangement, RD01 reduced diameter seal, wide thread adapter

Mating Part(s): AHDP06-24-29SR-WTA

See Plug column on this page for more details

Part Number AHDP06-24-29PR-WTA	Gender: Reversed Contact: Socket
---	-------------------------------------

Rear Seal Type: REDUCED SEAL, Blue

Description: Size 24 Plug with 29 positions, Socket reverse arrangement, RD01 reduced diameter seal, wide thread adapter

Mating Part(s): AHDP04-24-29SR-WTA

See Receptacle column on this page for more details

Part Number AHDP04-24-29SR-WTA	Gender: Reversed Contact: Socket
---	-------------------------------------

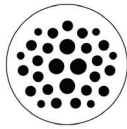
Rear Seal Type: REDUCED SEAL, Blue

Description: Size 24 Receptacle with 29 positions, Socket, reverse arrangement, RD01 reduced diameter seal, wide thread adapter

Mating Part(s): AHDP06-24-29PR-WTA

See Plug column on this page for more details

For custom insert configurations, please consult factory



29 Position Plugs & Receptacles Contacts

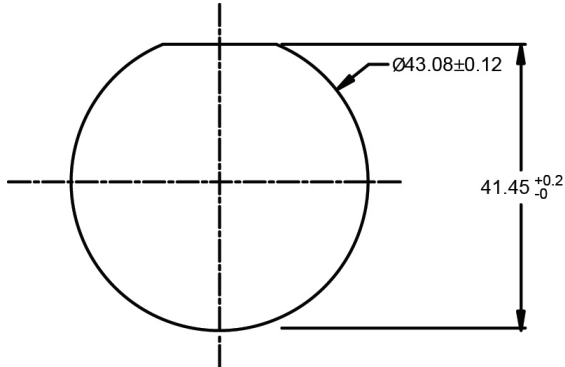
Shell Size
24

Contact Size	Part #	Type	(Pin/Socket)	Wire Range (AWG)	AMP	Plating
12	AT60-204-12141	Machined	Pin	12-14	25	Nickel
12	AT60-220-1231	Machined	Pin	12-14	25	Gold
12	AT62-203-12141	Machined	Socket	12-14	25	Nickel
12	AT62-210-1231	Machined	Socket	12-14	25	Gold
12	AT60-12-0166	Stamped & Formed	Pin	12-14	25	Nickel
12	AT60-12-0144	Stamped & Formed	Pin	12-14	25	Gold
12	AT60-12-0222	Stamped & Formed	Pin	12-14	25	Nickel
12	AT60-12-0244	Stamped & Formed	Pin	12-14	25	Gold
12	AT62-12-0166	Stamped & Formed	Socket	12-14	25	Nickel
12	AT62-12-0144	Stamped & Formed	Socket	12-14	25	Gold
12	AT62-12-0222	Stamped & Formed	Socket	12-14	25	Nickel
12	AT62-12-0244	Stamped & Formed	Socket	12-14	25	Gold
16	AT60-202-16141	Machined	Pin	16-20	13	Nickel
16	AT60-202-1631	Machined	Pin	16-20	13	Gold
16	AT60-215-16141	Machined	Pin	14	13	Nickel
16	AT60-215-1631	Machined	Pin	14	13	Gold
16	AT62-201-16141	Machined	Socket	16-20	13	Nickel
16	AT62-201-1631	Machined	Socket	16-20	13	Gold
16	AT62-209-16141	Machined	Socket	14	13	Nickel
16	AT62-209-1631	Machined	Socket	14	13	Gold
16	AT60-14-0122	Stamped & Formed	Pin	14-16	13	Nickel
16	AT60-14-0144	Stamped & Formed	Pin	14-16	13	Gold
16	AT60-16-0122	Stamped & Formed	Pin	16-18	13	Nickel
16	AT60-16-0144	Stamped & Formed	Pin	16-18	13	Gold
16	AT60-16-0622	Stamped & Formed	Pin	18-20	13	Nickel
16	AT60-16-0644	Stamped & Formed	Pin	18-20	13	Gold
16	AT62-14-0122	Stamped & Formed	Socket	14-16	13	Nickel
16	AT62-14-0144	Stamped & Formed	Socket	14-16	13	Gold
16	AT62-16-0122	Stamped & Formed	Socket	16-18	13	Nickel
16	AT62-16-0144	Stamped & Formed	Socket	16-18	13	Gold
16	AT62-16-0622	Stamped & Formed	Socket	18-20	13	Nickel
16	AT62-16-0644	Stamped & Formed	Socket	18-20	13	Gold
20	AT60-202-20141	Machined	Pin	20-22	7.5	Nickel
20	AT60-202-2031	Machined	Pin	20-22	7.5	Gold
20	AT62-201-20141	Machined	Socket	20-22	7.5	Nickel
20	AT62-201-2031	Machined	Socket	20-22	7.5	Gold
20	AT60-20-0122	Stamped & Formed	Pin	16-22	7.5	Nickel
20	AT60-20-0144	Stamped & Formed	Pin	16-22	7.5	Gold
20	AT62-20-0122	Stamped & Formed	Socket	16-22	7.5	Nickel
20	AT62-20-0144	Stamped & Formed	Socket	16-22	7.5	Gold



Shell Size
24

Recommended Panel Mounting Hole
Recommended panel thickness: 1.6 to 4.7mm



Part Number
AHDP24-PN01

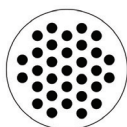
Panel Nut, Shell Size 24



Part Number
AT14-001-2486

Metal Lock Washer
Shell Size 24





Shell Size
24

31 Position Plugs & Receptacles

Contact Size:	16
Contact Qty:	31
Seal OD Range:	
REDUCED SEAL	1.35mm (.053") - 3.05mm (.120")
THIN SEAL	2.23mm (.088") - 3.40mm (.134")
Wire Range (AWG):	14-20AWG
Amperage:	13

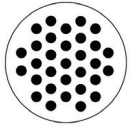
Plug	Receptacle
<p>SIZE 16 CONTACT (31 PLACES) </p> <p>1 11/16-12 UN THREAD</p>	<p>MAIN POLARIZING KEYWAY</p> <p>1 11/16-18 UNEF THREAD</p> <p>1 11/16-12 UN THREAD</p> <p>SIZE 16 CONTACT (31 PLACES) </p>

Standard and reverse terminal genders allows for custom polarization

<table> <tr> <th>Part Number</th><th>Gender: Standard</th></tr> <tr> <td>AHDP06-24-31SR-WTA</td><td>Contact: Socket</td></tr> <tr> <td colspan="2">Rear Seal Type: REDUCED SEAL, Blue</td></tr> <tr> <td colspan="2">Description: Size 24 Plug with 31 positions, Socket, standard arrangement, RD01 reduced diameter seal, wide thread adapter</td></tr> <tr> <td colspan="2">Mating Part(s): AHDP04-24-31PR-WTA AHDP04-24-31PT-WTA</td></tr> <tr> <td colspan="2">See Receptacle column on this page for more details</td></tr> </table>	Part Number	Gender: Standard	AHDP06-24-31SR-WTA	Contact: Socket	Rear Seal Type: REDUCED SEAL, Blue		Description: Size 24 Plug with 31 positions, Socket, standard arrangement, RD01 reduced diameter seal, wide thread adapter		Mating Part(s): AHDP04-24-31PR-WTA AHDP04-24-31PT-WTA		See Receptacle column on this page for more details		<table> <tr> <th>Part Number</th><th>Gender: Standard</th></tr> <tr> <td>AHDP04-24-31PR-WTA</td><td>Contact: Pin</td></tr> <tr> <td colspan="2">Rear Seal Type: REDUCED SEAL, Blue</td></tr> <tr> <td colspan="2">Description: Size 24 Receptacle with 31 positions, Pin, standard arrangement, RD01 reduced diameter seal, wide thread adapter</td></tr> <tr> <td colspan="2">Mating Part(s): AHDP06-24-31SR-WTA AHDP06-24-31ST-WTA</td></tr> <tr> <td colspan="2">See Plug column on this page for more details</td></tr> </table>	Part Number	Gender: Standard	AHDP04-24-31PR-WTA	Contact: Pin	Rear Seal Type: REDUCED SEAL, Blue		Description: Size 24 Receptacle with 31 positions, Pin, standard arrangement, RD01 reduced diameter seal, wide thread adapter		Mating Part(s): AHDP06-24-31SR-WTA AHDP06-24-31ST-WTA		See Plug column on this page for more details	
Part Number	Gender: Standard																								
AHDP06-24-31SR-WTA	Contact: Socket																								
Rear Seal Type: REDUCED SEAL, Blue																									
Description: Size 24 Plug with 31 positions, Socket, standard arrangement, RD01 reduced diameter seal, wide thread adapter																									
Mating Part(s): AHDP04-24-31PR-WTA AHDP04-24-31PT-WTA																									
See Receptacle column on this page for more details																									
Part Number	Gender: Standard																								
AHDP04-24-31PR-WTA	Contact: Pin																								
Rear Seal Type: REDUCED SEAL, Blue																									
Description: Size 24 Receptacle with 31 positions, Pin, standard arrangement, RD01 reduced diameter seal, wide thread adapter																									
Mating Part(s): AHDP06-24-31SR-WTA AHDP06-24-31ST-WTA																									
See Plug column on this page for more details																									
<table> <tr> <th>Part Number</th><th>Gender: Standard</th></tr> <tr> <td>AHDP06-24-31ST-WTA</td><td>Contact: Socket</td></tr> <tr> <td colspan="2">Rear Seal Type: THIN SEAL, Grey</td></tr> <tr> <td colspan="2">Description: Size 24 Plug with 31 positions, Socket, standard arrangement, thin seal, wide thread adapter</td></tr> <tr> <td colspan="2">Mating Part(s): AHDP04-24-31PR-WTA AHDP04-24-31PT-WTA</td></tr> <tr> <td colspan="2">See Receptacle column on this page for more details</td></tr> </table>	Part Number	Gender: Standard	AHDP06-24-31ST-WTA	Contact: Socket	Rear Seal Type: THIN SEAL, Grey		Description: Size 24 Plug with 31 positions, Socket, standard arrangement, thin seal, wide thread adapter		Mating Part(s): AHDP04-24-31PR-WTA AHDP04-24-31PT-WTA		See Receptacle column on this page for more details		<table> <tr> <th>Part Number</th><th>Gender: Standard</th></tr> <tr> <td>AHDP04-24-31PT-WTA</td><td>Contact: Pin</td></tr> <tr> <td colspan="2">Rear Seal Type: THIN SEAL, Grey</td></tr> <tr> <td colspan="2">Description: Size 24 Receptacle with 31 positions, Pin, standard arrangement, thin seal, wide thread adapter</td></tr> <tr> <td colspan="2">Mating Part(s): AHDP06-24-31SR-WTA AHDP06-24-31ST-WTA</td></tr> <tr> <td colspan="2">See Plug column on this page for more details</td></tr> </table>	Part Number	Gender: Standard	AHDP04-24-31PT-WTA	Contact: Pin	Rear Seal Type: THIN SEAL, Grey		Description: Size 24 Receptacle with 31 positions, Pin, standard arrangement, thin seal, wide thread adapter		Mating Part(s): AHDP06-24-31SR-WTA AHDP06-24-31ST-WTA		See Plug column on this page for more details	
Part Number	Gender: Standard																								
AHDP06-24-31ST-WTA	Contact: Socket																								
Rear Seal Type: THIN SEAL, Grey																									
Description: Size 24 Plug with 31 positions, Socket, standard arrangement, thin seal, wide thread adapter																									
Mating Part(s): AHDP04-24-31PR-WTA AHDP04-24-31PT-WTA																									
See Receptacle column on this page for more details																									
Part Number	Gender: Standard																								
AHDP04-24-31PT-WTA	Contact: Pin																								
Rear Seal Type: THIN SEAL, Grey																									
Description: Size 24 Receptacle with 31 positions, Pin, standard arrangement, thin seal, wide thread adapter																									
Mating Part(s): AHDP06-24-31SR-WTA AHDP06-24-31ST-WTA																									
See Plug column on this page for more details																									

For custom insert configurations, please consult factory

31 Position Plugs & Receptacles

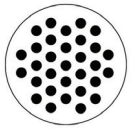


Shell Size
24

Plug		Receptacle	
Part Number AHDP06-24-31PR-WTA	Gender: Reversed Contact: Pin	Part Number AHDP04-24-31SR-WTA	Gender: Reversed Contact: Socket
Rear Seal Type: REDUCED SEAL, Blue		Rear Seal Type: REDUCED SEAL, Blue	
Description: Size 24 Plug with 31 positions, Pin, reverse arrangement, RD01 reduced diameter seal, wide thread adapter		Description: Size 24 Receptacle with 31 positions, Socket, reverse arrangement, RD01 reduced diameter seal, wide thread adapter	
Mating Part(s): AHDP04-24-31SR-WTA AHDP04-24-31ST-WTA		Mating Part(s): AHDP06-24-31PR-WTA AHDP06-24-31PT-WTA	
See Receptacle column on this page for more details		See Plug column on this page for more details	
Part Number AHDP06-24-31PT-WTA	Gender: Reversed Contact: Pin	Part Number AHDP04-24-31ST-WTA	Gender: Reversed Contact: Socket
Rear Seal Type: THIN SEAL, Grey		Rear Seal Type: THIN SEAL, Grey	
Description: Size 24 Plug with 31 positions, Pin, reverse arrangement, thin seal, wide thread adapter		Description: Size 24 Receptacle with 31 positions, Socket, reverse arrangement, thin seal, wide thread adapter	
Mating Part(s): AHDP04-24-31SR-WTA AHDP04-24-31ST-WTA		Mating Part(s): AHDP06-24-31PR-WTA AHDP06-24-31PT-WTA	
See Receptacle column on this page for more details		See Plug column on this page for more details	

31 Pin Plugs & Receptacles - Contacts

Contact Size	Part #	Type	(Pin/Socket)	Wire Range (AWG)	AMP	Plating
16	AT60-202-16141	Machined	Pin	16-20	13	Nickel
16	AT60-202-1631	Machined	Pin	16-20	13	Gold
16	AT60-215-16141	Machined	Pin	14	13	Nickel
16	AT60-215-1631	Machined	Pin	14	13	Gold
16	AT62-201-16141	Machined	Socket	16-20	13	Nickel
16	AT62-201-1631	Machined	Socket	16-20	13	Gold
16	AT62-209-16141	Machined	Socket	14	13	Nickel
16	AT62-209-1631	Machined	Socket	14	13	Gold
16	AT60-14-0122	Stamped & Formed	Pin	14-16	13	Nickel
16	AT60-14-0144	Stamped & Formed	Pin	14-16	13	Gold

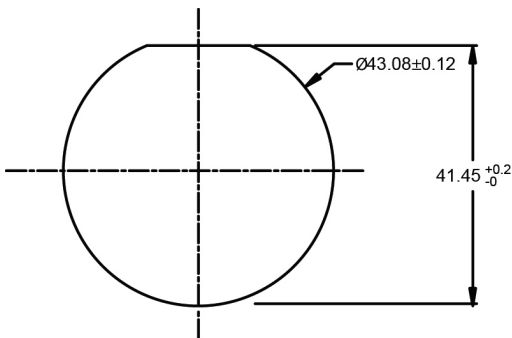


31 Position Plugs & Receptacles

Shell Size
24

Contact Size	Part #	Type	(Pin/Socket)	Wire Range (AWG)	AMP	Plating
16	AT60-16-0122	Stamped & Formed	Pin	16-18	13	Nickel
16	AT60-16-0144	Stamped & Formed	Pin	16-18	13	Gold
16	AT60-16-0622	Stamped & Formed	Pin	18-20	13	Nickel
16	AT60-16-0644	Stamped & Formed	Pin	18-20	13	Gold
16	AT62-14-0122	Stamped & Formed	Socket	14-16	13	Nickel
16	AT62-14-0144	Stamped & Formed	Socket	14-16	13	Gold
16	AT62-16-0122	Stamped & Formed	Socket	16-18	13	Nickel
16	AT62-16-0144	Stamped & Formed	Socket	16-18	13	Gold
16	AT62-16-0622	Stamped & Formed	Socket	18-20	13	Nickel
16	AT62-16-0644	Stamped & Formed	Socket	18-20	13	Gold

Recommended Panel Mounting Hole
Recommended Panel thickness: 1.6 to 4.7mm



Part Number

AHDP24-PN01

Panel Nut, Shell Size 24



Part Number

AT14-001-2486

Metal Lock Washer
Shell Size 24



Part Number
WA23-DS

Heavy Duty Pneumatic Crimp Tool



Part Number
WA23-2

Die Assembly for CA-5E12 Heavy Duty Pneumatic Crimp Tool, Size 8



Part Number
WA23-101DA

Contact Locator, Size 8



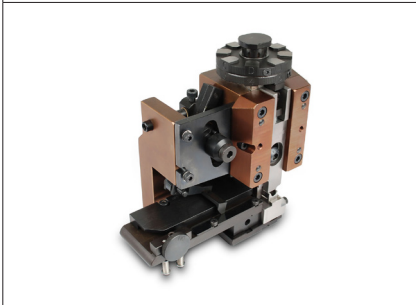
Part Number
MFX-3973

Size 12 Crimp Die for Stamped and Formed Contacts



Part Number
MFX-3950

Size 16 Crimp Die for Stamped and Formed Contacts 18-20AWG



Part Number
MFX-3953

Size 16 Crimp Die for Stamped and Formed Contacts 16-18AWG



Part Number
MFX-3974

Size 20 Crimp Die for Stamped and Formed Contacts



Part Number
CA-5D12

Universal Hand Crimp Tool, Size 12/16/20 Solid Contacts Only



Part Number
CA-5E12

Pneumatic Crimp Tool, Size 12/16/20 Solid Contacts Only



Tools & Accessories

Part Number
ATT-12-00

Size 12 Stamped and Formed
Contact Tool 12AWG



Part Number
AT11-001-3.6M

Removal Tool, Plastic
Size 8 (3.6 mm)



Part Number
AT11-240-2005

Removal Tool, Plastic
Size 20



Part Number
ATT-16-00

Size 16 Stamped and Formed
Contact Tool 14-16AWG



Part Number
AT11-337-1205

Removal Tool, Plastic
Size 12



Part Number
AT11-310-1605

Removal Tool, Plastic
Size 16



Part Number
ATT-16-01

Size 16 Stamped and Formed
Contact Tool 18-20AWG



Part Number
AHDPBS-0406-001

Size 24 Backshell WTA



Part Number
AHDPBS-0406-002

Size 24 Backshell WTA
with Compression Nut.
Cable diameter range: .57-.71"



Part Number
ATT-20-00

Size 20 Stamped and Formed
Contact Tool 20AWG



Part Number Cross Reference

Competitor's Compatible Part Number			Amphenol PN	Page
Exclusive to Amphenol Sine Systems			AHDP06-24-07SN-WTA	4
Exclusive to Amphenol Sine Systems			AHDP04-24-07PN-WTA	4
Exclusive to Amphenol Sine Systems			AHDP06-24-07PN-WTA	4
Exclusive to Amphenol Sine Systems			AHDP04-24-07SN-WTA	4
HDP26-24-19SN	HDP26-24-19SN-L015	HDP26-24-19SN-L024	AHDP06-24-19SN-WTA	7
HDP26-24-19SE	HDP26-24-19SE-L015	HDP26-24-19SE-L024	AHDP06-24-19SR-WTA	7
HDP24-24-19PN	HDP24-24-19PN-L015	HDP24-24-19PN-L024	AHDP04-24-19PN-WTA	7
HDP24-24-19PE	HDP24-24-19PE-L015	HDP24-24-19PE-L024	AHDP04-24-19PR-WTA	7
HDP26-24-19PN	HDP26-24-19PN-L015	HDP26-24-19PN-L024	AHDP06-24-19PN-WTA	8
HDP26-24-19PE	HDP26-24-19PE-L015	HDP26-24-19PE-L024	AHDP06-24-19PR-WTA	8
HDP24-24-19SN	HDP24-24-19SN-L015	HDP24-24-19SN-L024	AHDP04-24-19SN-WTA	8
HDP24-24-19SE	HDP24-24-19SE-L015	HDP24-24-19SE-L024	AHDP04-24-19SR-WTA	8
HDP26-24-23SN	HDP26-24-23SN-L015	HDP26-24-23SN-L024	AHDP06-24-23SN-WTA	10
HDP26-24-23SE	HDP26-24-23SE-L015	HDP26-24-23SE-L024	AHDP06-24-23SR-WTA	10
HDP24-24-23PN	HDP24-24-23PN-L015	HDP24-24-23PN-L024	AHDP04-24-23PN-WTA	10
HDP24-24-23PE	HDP24-24-23PE-L015	HDP24-24-23PE-L024	AHDP04-24-23PR-WTA	10
HDP26-24-23PN	HDP26-24-23PN-L015	HDP26-24-23PN-L024	AHDP06-24-23PN-WTA	11
HDP26-24-23PE	HDP26-24-23PE-L015	HDP26-24-23PE-L024	AHDP06-24-23PR-WTA	11
HDP24-24-23SN	HDP24-24-23SN-L015	HDP24-24-23SN-L024	AHDP04-24-23SN-WTA	11
HDP24-24-23SE	HDP24-24-23SE-L015	HDP24-24-23SE-L024	AHDP04-24-23SR-WTA	11
HDP24-24-29PE	HDP24-24-29PE-L015	HDP24-24-29PE-L024	AHDP04-24-29SR-WTA	13
HDP26-24-29PE	HDP26-24-29PE-L015	HDP26-24-29PE-L024	AHDP06-24-29PR-WTA	13
HDP24-24-29SE	HDP24-24-29SE-L015	HDP24-24-29SE-L024	AHDP04-24-29SR-WTA	13
HDP24-24-29PE	HDP24-24-29PE-L015	HDP24-24-29PE-L024	AHDP04-24-29PR-WTA	13
HDP26-24-31SE	HDP26-24-31SE-L015	HDP26-24-31SE-L024	AHDP06-24-31SR-WTA	16
HDP26-24-31ST	HDP26-24-31ST-L015	HDP26-24-31ST-L024	AHDP06-24-31ST-WTA	16
HDP24-24-31PE	HDP24-24-31PE-L015	HDP24-24-31PE-L024	AHDP04-24-31PR-WTA	16
HDP24-24-31PT	HDP24-24-31PT-L015	HDP24-24-31PT-L024	AHDP04-24-31PT-WTA	16
HDP26-24-31PE	HDP26-24-31PE-L015	HDP26-24-31PE-L024	AHDP06-24-31PR-WTA	17
HDP26-24-31PT	HDP26-24-31PT-L015	HDP26-24-31PT-L024	AHDP06-24-31PT-WTA	17
HDP24-24-31SE	HDP24-24-31SE-L015	HDP24-24-31SE-L024	AHDP04-24-31SR-WTA	17
HDP24-24-31ST	HDP24-24-31ST-L015	HDP24-24-31ST-L024	AHDP04-24-31ST-WTA	17

www.amphenol-sine.com

USA

Amphenol Sine Systems

44724 Morley Drive
Clinton Township, MI 48036
Toll-Free: 1-800-394-7732
Fax: 1-586-465-1216
Email: csr@amphenol-sine.com
www.amphenol-sine.com

Germany

Amphenol Tuchel GmbH

August-Haeusser-Strasse 10
Heilbronn, Germany 74080
Phone: 49(0)-7131-929-0
Fax: 49(0)-7131-929-486
Email: info@amphenol.de
www.amphenol.de

China

Amphenol Sine Systems

Building 21, 1st Liao Keng Industrial Zone,
Shi Yan Street, Bao An District
Shenzhen, China 518180
Tel: 86-755-8173-8000 ext. 8098
Fax: 86-755-8173-8180
www.amphenol-sine.com.cn

USA

Amphenol Corporation Corporate Headquarters

358 Hall Ave
Wallingford Ct 06492
Phone: (877) 267-4366
www.amphenol.com

Mexico

Prolongacion Reforma 61-6 B2

Col. Paseo de las Lomas
C.P. 01330 Mexico DF, Mexico
Phone: 52-55-5258-9984
Fax: 52-55-5081-6890
Email: info@amphenolmexico.com
www.amphenolmexico.com

Argentina

Amphenol ARGENTINA

Avenida Callao 930
2nd floor Office B Plaza
C1023AAP Buenos Aires, Argentina
Phone: 54-11-4815-6886
Fax: 54-11-4814-5779
Email: info@amphenol.com.ar
amphenol.com.ar

Brazil

Amphenol do Brasil Ltda

Rua Diogo Moreira, 132
20 Andar, Rooms 2001-2-3
CEP 05423-101
Sao Paulo- SP, Brazil
Phone: 55-11-3815-1003
Fax: 55-11-3815-1629
www.amphenol.com.br

France

Amphenol SOCAPEX

948, Promenade de l'Arve - BP 29
74311 Thyez CEDEX, France
Phone: 33(0)4-50-89-28-40
Fax: 33(0)4-50-96-29-75
www.amphenol-socapex.com

United Kingdom

Amphenol LIMITED

Thanet Way, Whitstable
Kent CT5 3JF, United Kingdom
Phone: 44-1-227-773200
Fax: 44-1-227-276571
www.amphenol.co.uk

Australia

Amphenol AUSTRALIA PTY LIMITED

2 Fiveways Blvd., Keysborough
Melbourne, Victoria 3173 Australia
Phone: 613-8796-8888
Fax: 613-8796-8801
www.amphenol.com.au

Turkey

Amphenol International Ltd Turkey

Sun Plaza Kat. 15
Maslak Mah. Bilim Sok. No. 5
34398 Sisli / Istanbul - Turkey
Tel: + 90 212 367.92.20
Fax: + 90 212 367.92.21
www.amphenol.com.tr

South Africa

Amphenol International Ltd South Africa

30 Impala Road
2196 Sandton, Chislehurst
South Africa
Phone: 27-11-783-9517
Fax: 27-11-783-9519
Email: sales@amphenolafrica.com
www.amphenol.com.za

India

Amphenol INTERCONNECT INDIA PVT LTD

105 Bhosari Industrial Area
Pune 411 026, India
Phone: +91 20 67360304
Fax: +91 20 67360321
www.amphenol-in.com

Korea

Amphenol DAESHIN

558. Songnae-2 Dong. SoSa-Gu
Bucheon City, Gyeonggi-do,
Korea 422-818
Phone: 81-32-610-3800
Fax: 81-32-673-2507
Email: info@amphenol.co.kr
www.amphenol.co.kr

Japan

Amphenol JAPAN

471-1, Deba, Ritto-city
shiga 520-3041, Japan
Phone: 81-77-553-8501
Fax: 81-77-551-2200
www.amphenol.co.jp

Russia

Amphenol RUSSIA

8 Yaroslavskaja Street
129164 Moscow, Russia
Phone: 7495-937-6341
Fax: 7495-937-6319
www.amphenol.ru