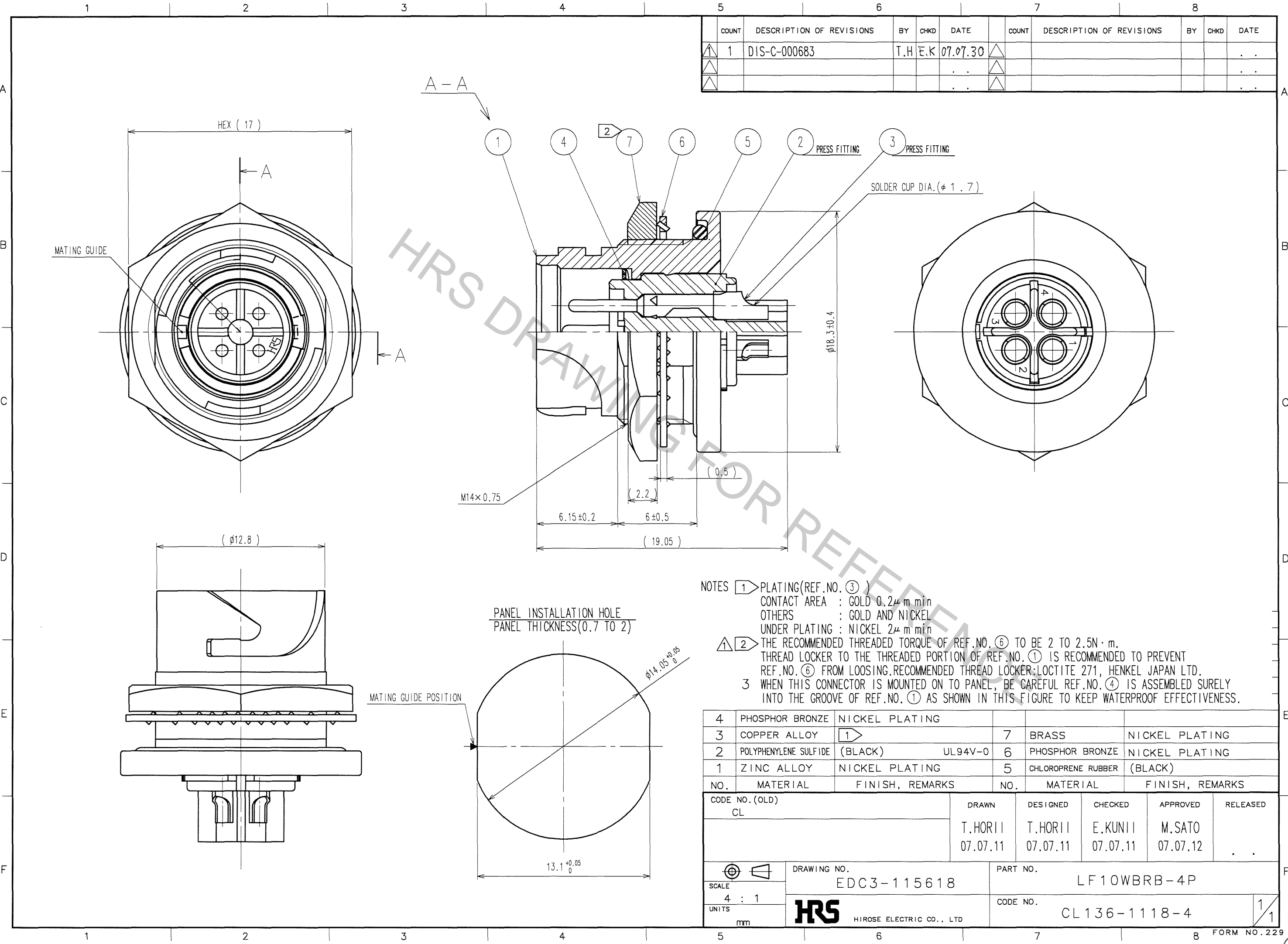


Oct.1.2018 Copyright 2018 HIROSE ELECTRIC CO., LTD. All Rights Reserved.
In case that the application demands a high level of reliability, such as automotive,
please contact a company representative for further information.

TO
R



COUNT	DESCRIPTION OF REVISIONS	BY	CHKD	DATE	COUNT	DESCRIPTION OF REVISIONS	BY	CHKD	DATE
1	DIS-C-000683	T.H	E.K	07.07.30					

NOTES ① PLATING(REF.NO.③)
CONTACT AREA : GOLD 0.2 μ m min
OTHERS : GOLD AND NICKEL
UNDER PLATING : NICKEL 2 μ m min
② THE RECOMMENDED THREADED TORQUE OF REF.NO.⑥ TO BE 2 TO 2.5N·m.
THREAD LOCKER TO THE THREADED PORTION OF REF.NO.① IS RECOMMENDED TO PREVENT
REF.NO.⑥ FROM LOOSING.RECOMMENDED THREAD LOCKER:LOCTITE 271, HENKEL JAPAN LTD.
③ WHEN THIS CONNECTOR IS MOUNTED ON TO PANEL, BE CAREFUL REF.NO.④ IS ASSEMBLED SURELY
INTO THE GROOVE OF REF.NO.① AS SHOWN IN THIS FIGURE TO KEEP WATERPROOF EFFECTIVENESS.

4	PHOSPHOR BRONZE	NICKEL PLATING			
3	COPPER ALLOY	①	7	BRASS	NICKEL PLATING
2	POLYPHENYLENE SULFIDE	(BLACK) UL94V-0	6	PHOSPHOR BRONZE	NICKEL PLATING
1	ZINC ALLOY	NICKEL PLATING	5	CHLOROPRENE RUBBER	(BLACK)
NO.	MATERIAL	FINISH, REMARKS	NO.	MATERIAL	FINISH, REMARKS

CODE NO.(OLD) CL	DRAWN T.HORII 07.07.11	DESIGNED T.HORII 07.07.11	CHECKED E.KUNII 07.07.11	APPROVED M.SATO 07.07.12	RELEASED .
---------------------	------------------------------	---------------------------------	--------------------------------	--------------------------------	---------------

SCALE 4 : 1	DRAWING NO. EDC3-115618	PART NO. LF10WBRB-4P
UNITS mm	HRS HIROSE ELECTRIC CO., LTD	CODE NO. CL136-1118-4