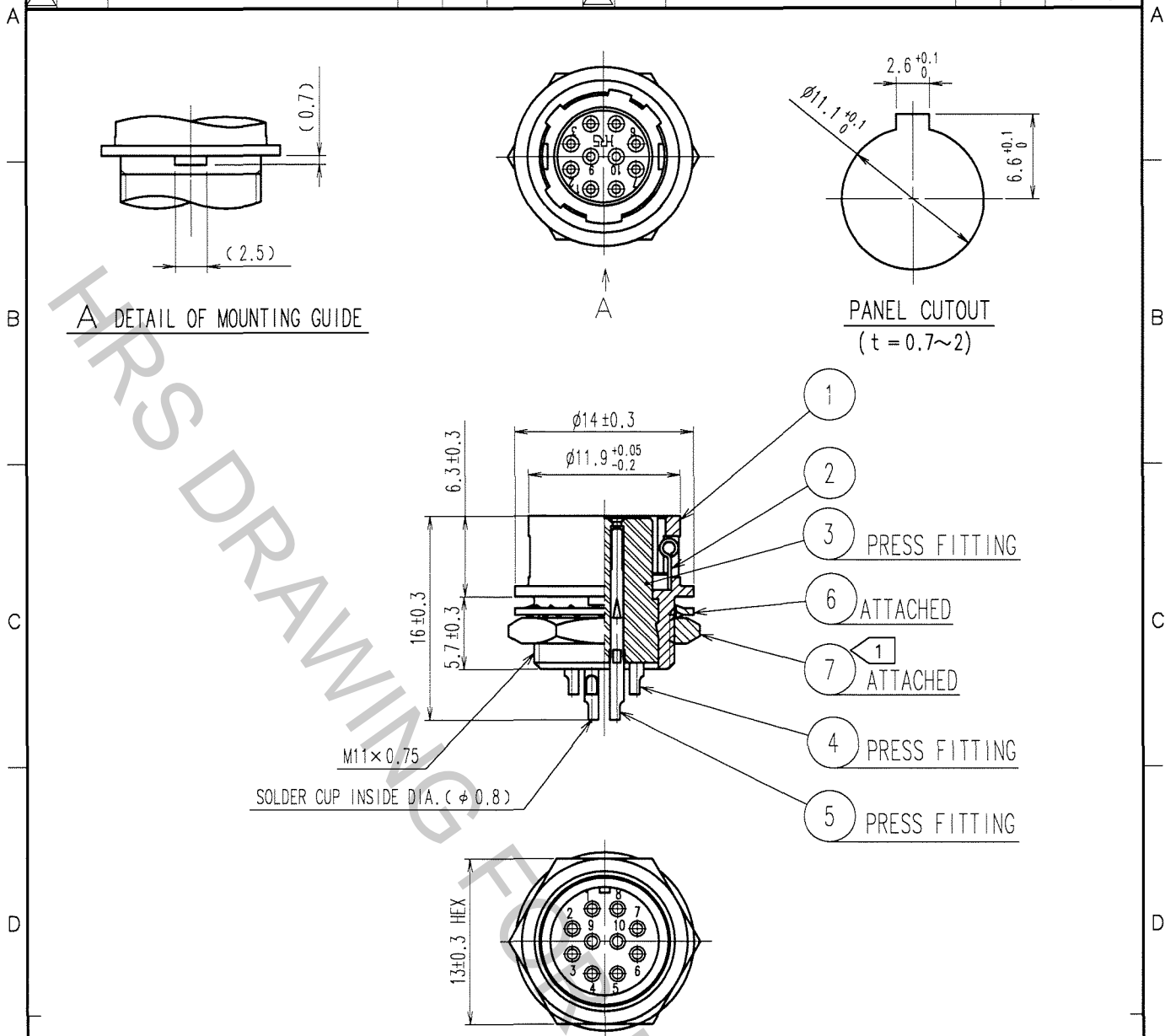


Oct.1.2018 Copyright 2018 HIROSE ELECTRIC CO., LTD. All Rights Reserved.
In case that the application demands a high level of reliability, such as automotive,
please contact a company representative for further information.

1					2					3					4				
COUNT	DESCRIPTION OF REVISIONS				BY	CHKD	DATE			COUNT	DESCRIPTION OF REVISIONS				BY	CHKD	DATE		
1	DIS-C-000585				T.K	E.K	07.07.27												



NOTE 1 THE RECOMMENDED CLAMP TORQUE OF REF. NO. ⑦ TO BE 2 N · m.
LOCTITE 242, HENKEL JAPAN OR EQUIVALENT IS RECOMMENDED TO
PREVENT REF. NO. ⑦ FROM LOOSENING.

3 POLYAMIDE (BLACK) UL94V-0			7 BRASS ① NICKEL PLATING		
2 STAINLESS STEEL			6 PHOSPHOR BRONZE NICKEL PLATING		
1 ZINC ALLOY MATTE FINISH NICKEL PLATED			5 PHOSPHOR BRONZE SILVER PLATING 2μ m min.		
4 PHOSPHOR BRONZE					
NO.	MATERIAL	FINISH, REMARKS	NO.	MATERIAL	FINISH, REMARKS
CODE NO. (OLD) CL			DRAWN	DESIGNED	CHECKED
			D.MATSUNE	D.MATSUNE	E.KUNII
			'05 10 01	'05 10 01	'05 10 03
					M.SATO
					'05 10 14
RELEASED					
DRAWING NO. EDC4-021368-71			PART NO. HR10A-10R-10S(71)		
SCALE 2 : 1			CODE NO. CL110-0409-9-71		
UNITS mm					

TO
R



HIROSE ELECTRIC CO., LTD.