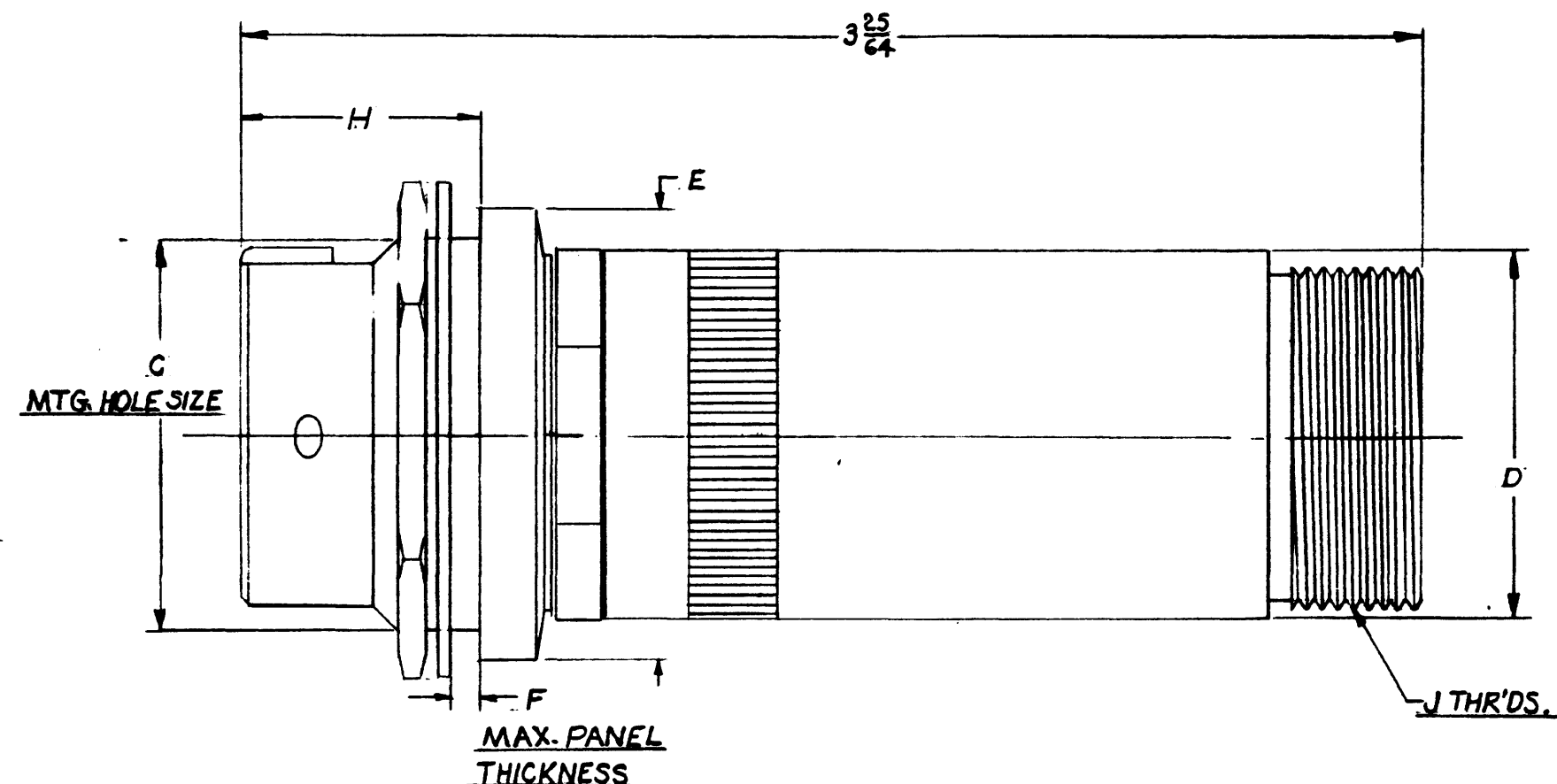
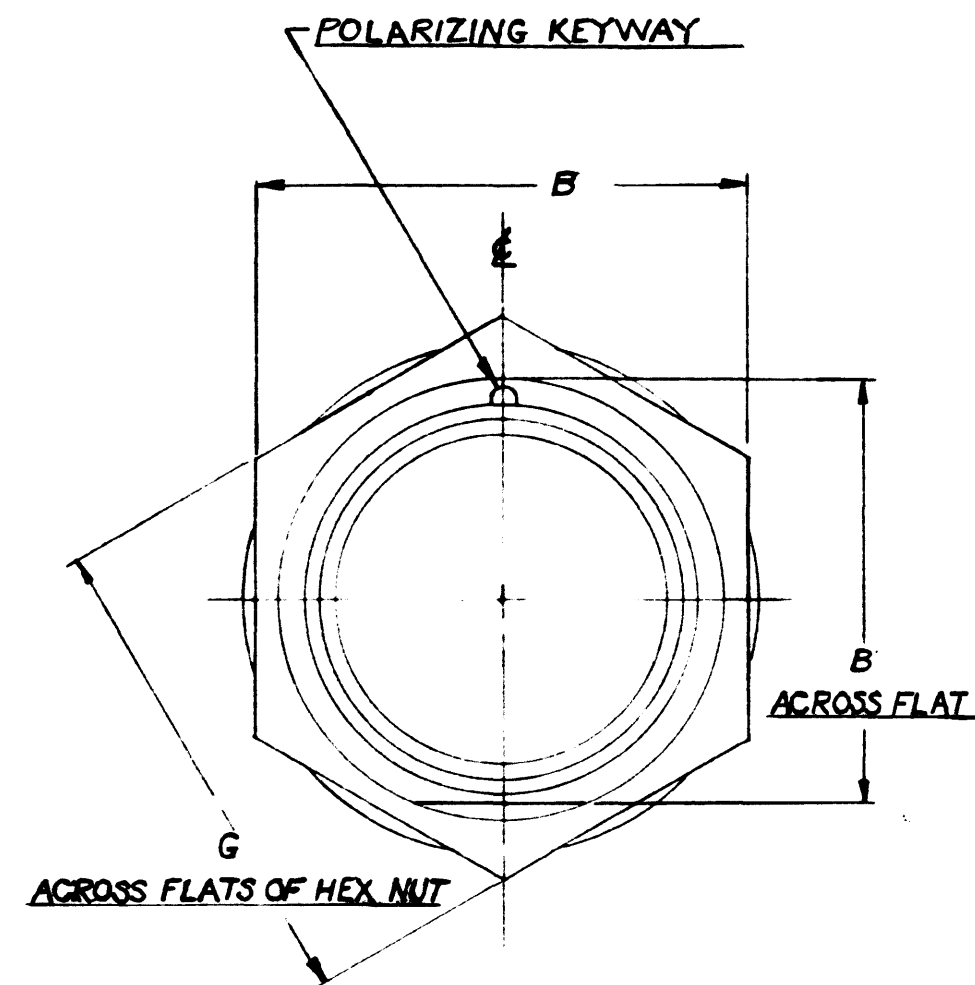


MOD-218



SHELL SIZE	A	B	C ^{+0.005} -0.005 MAX. DIA. FOR SEAL	D	E	F	G	H	J-THR'DS.
-7 ^P _S	$\frac{21}{32}$	$\frac{7}{8}$.696	$\frac{11}{16}$	$\frac{7}{8}$	$\frac{1}{8}$	$\frac{13}{16}$	$\frac{11}{16}$	$\frac{5}{8}$ -24 NEF-2A
-12 ^P _S	$\frac{25}{32}$	$\frac{11}{16}$.818	$\frac{13}{16}$	$\frac{11}{16}$	$\frac{1}{8}$	$\frac{15}{16}$	$\frac{11}{16}$	$\frac{3}{4}$ -20 UNEF-2A
-19 ^P _S	$\frac{31}{32}$	$\frac{11}{16}$	1.010	$\frac{61}{64}$	$\frac{13}{16}$	$\frac{1}{8}$	$\frac{17}{16}$	$\frac{11}{16}$	$\frac{7}{8}$ -20 UNEF-2A
-27 ^P _S	$\frac{33}{32}$	$\frac{11}{16}$	1.135	$\frac{3}{32}$	$\frac{17}{16}$	$\frac{1}{8}$	$\frac{17}{16}$	$\frac{11}{16}$	1-20 UNEF-2A
-37 ^P _S	$\frac{13}{16}$	$\frac{11}{16}$	1.260	$\frac{11}{16}$	$\frac{13}{16}$	$\frac{1}{8}$	$\frac{13}{16}$	$\frac{11}{16}$	$\frac{13}{16}$ -18 UNEF-2A
-61 ^P _S	$\frac{119}{32}$	$\frac{11}{8}$	1.630	$\frac{13}{16}$	$\frac{13}{16}$	$\frac{1}{8}$	$\frac{13}{16}$	$\frac{3}{4}$	$\frac{17}{16}$ -18 NEF-2A

2. FOR AVAILABLE CONTACT ARRANGEMENTS AND
ALTERNATE INSERT POSITIONS SEE 17500 SHEETS.
1. SEE "GENERAL DESCRIPTION" FOR ELECTRICAL
& MATERIAL SPECIFICATIONS.

NOTES:

1. DE-BURR ALL SHARP EDGES

TOLERANCES	
FRACTIONS $\pm .015$ DECIMALS $\pm .005$ ANGLES $\pm \frac{1}{2}^\circ$	
UNLESS OTHERWISE SPECIFIED	
MATERIAL	SPEC.
MATERIAL	SPEC.
MATERIAL	SPEC.
FORGING	SPEC.
	WT.

THE DEUTSCH COMPANY
7000 AVALON BLVD., LOS ANGELES, CALIF.

17056-1 (ENVELOPE)
RECEPTACLE, BLKHD. MTG. TYPE
WITH CABLE CLAMP ADAPTER &
EXTENSION.

NO. CHANGE BY DATE

DRAWN STAN. BYER

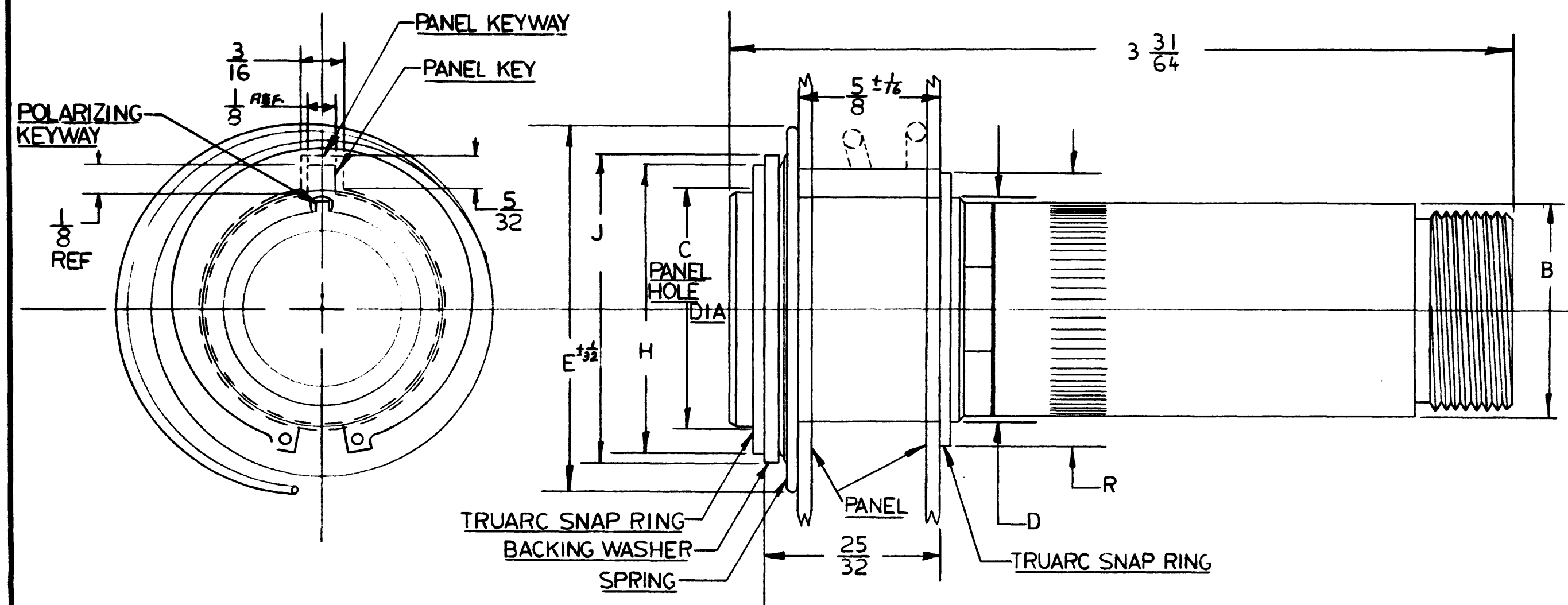
CHECKED

APPROVED

DATE 11-18-59 SCALE NONE

MOD.-218

RECEPTACLE (ENVELOPE)



MOD-218

PART NO	NO CONTACTS	B	C	D	E	H	J	R	WT/LBS
DS09-3	3	$\frac{37}{64}$	$\frac{11}{16}$	$\frac{39}{64}$	$1\frac{3}{16}$	$\frac{43}{64}$	$\frac{7}{8}$	$\frac{3}{4}$	
DS09-7	7	$\frac{11}{16}$	$\frac{13}{16}$	$\frac{3}{4}$	$1\frac{5}{16}$	$\frac{31}{32}$	$1\frac{5}{32}$	$\frac{15}{16}$	
DS09-12	12	$\frac{13}{16}$	$\frac{41}{64}$	$\frac{55}{64}$	$1\frac{33}{64}$	$1\frac{3}{16}$	$1\frac{1}{4}$	$1\frac{5}{64}$	
DS09-19	19	$\frac{41}{64}$	$1\frac{1}{16}$	1	$1\frac{41}{64}$	$1\frac{19}{64}$	$1\frac{3}{8}$	$1\frac{15}{64}$	
DS09-27	27	$1\frac{3}{32}$	$1\frac{3}{16}$	$1\frac{9}{64}$	$1\frac{13}{16}$	$1\frac{17}{32}$	$1\frac{5}{8}$	$1\frac{15}{32}$	
DS09-37	37	$1\frac{1}{4}$	$1\frac{3}{8}$	$1\frac{5}{16}$	$2\frac{1}{16}$	$1\frac{9}{32}$	$1\frac{51}{64}$	$1\frac{17}{32}$	
DS09-61	61	$1\frac{9}{16}$	$1\frac{11}{16}$	$1\frac{5}{8}$	$2\frac{41}{64}$	2	$2\frac{9}{64}$	2	

1. DE-BURR ALL SHARP EDGES

TOLERANCES
FRACTIONS $\pm .015$ DECIMALS $\pm .005$ ANGLES $\pm \frac{1}{2}^\circ$
UNLESS OTHERWISE SPECIFIED

MATERIAL	SPEC.
MATERIAL	SPEC.
MATERIAL	SPEC.
FORGING	SPEC.

WT.

THE DEUTSCH COMPANY
7000 AVALON BLVD., LOS ANGELES, CALIF.

DS09 * 5 PLUG, RACK + PANEL
TYPE-WITH CABLE CLAMP
ADAPTER + EXTENSION

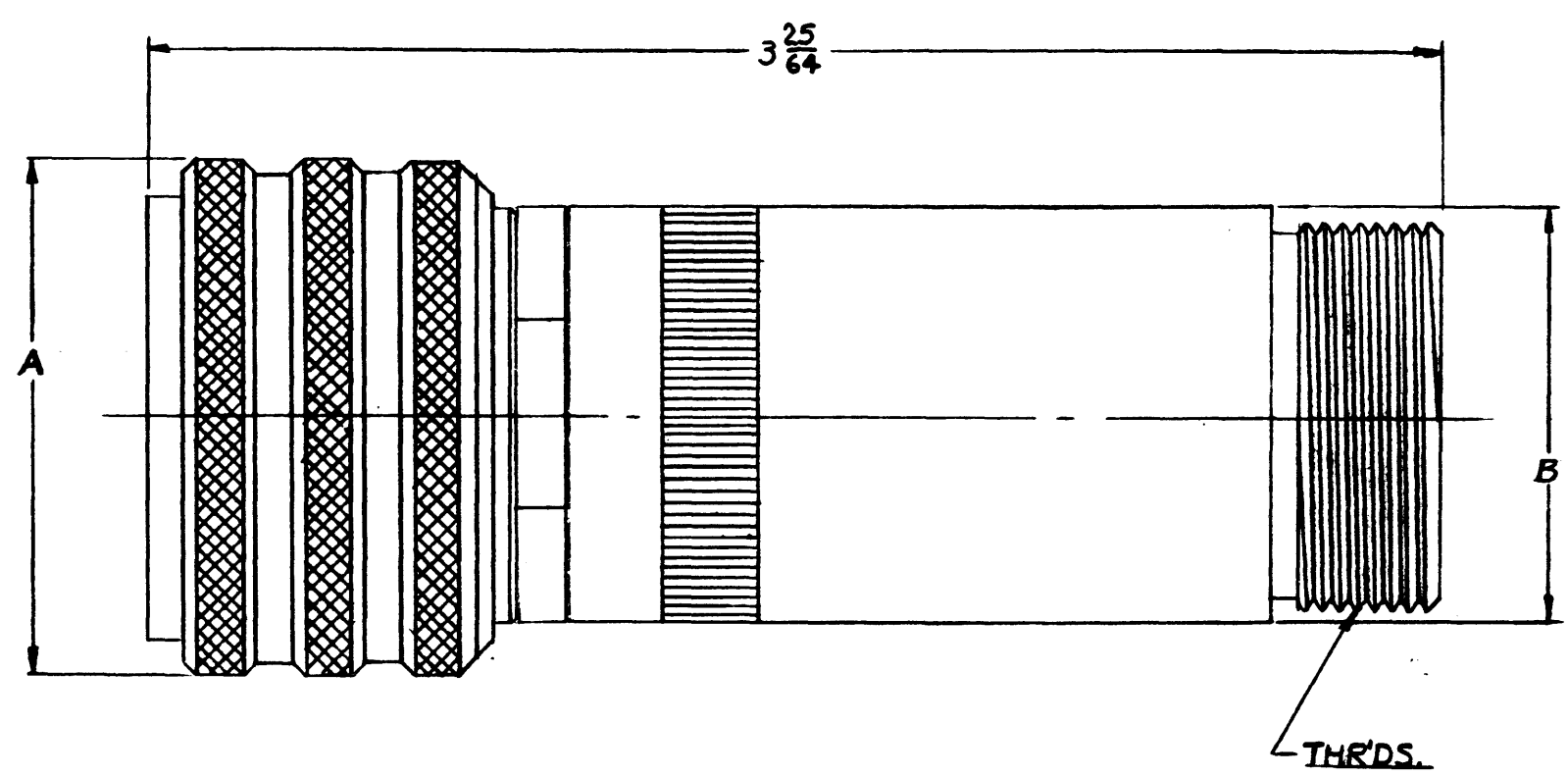
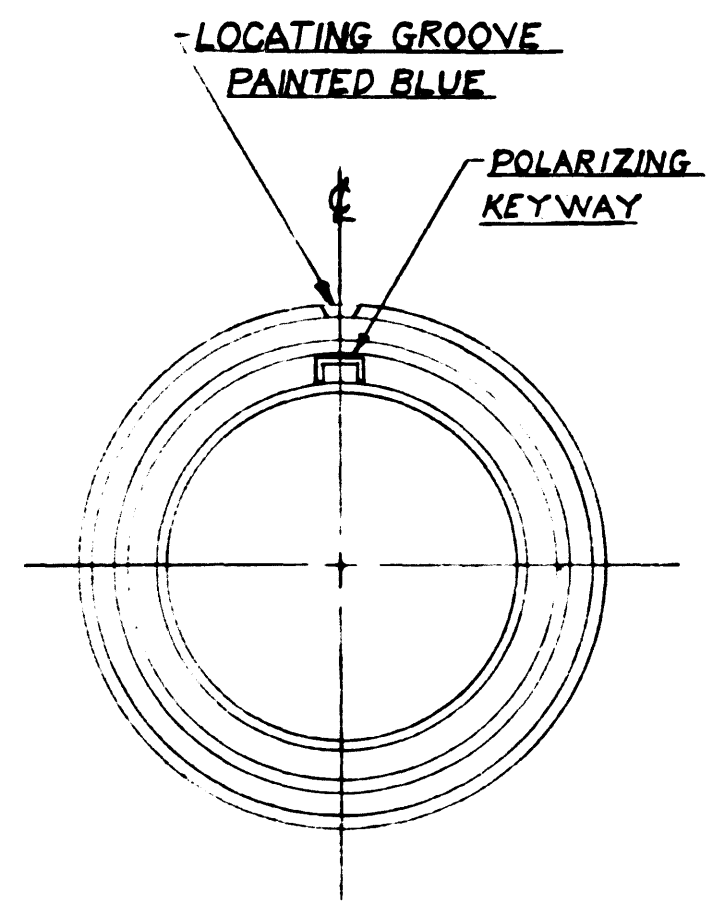
NO. CHANGE BY DATE

DRAWN *H. Bragdon*
CHECKED *W. H. H. H.*
APPROVED *CEP*

DATE 11-25-59 SCALE

MOD-218
PLUG (ENVELOPE)

MOD. 218



SHELL SIZE	A	B	THR'DS.
-3 S	$\frac{47}{64}$	$\frac{37}{64}$	$\frac{1}{2}$ -28 UNEF-2A
-7 S	$\frac{59}{64}$	$\frac{11}{16}$	$\frac{5}{8}$ -24 NEF-2A
-12 S	$\frac{13}{16}$	$\frac{13}{16}$	$\frac{3}{4}$ -20 UNEF-2A
-19 S	$\frac{13}{16}$	$\frac{61}{64}$	$\frac{5}{8}$ -20 UNEF-2A
-27 S	$\frac{11}{32}$	$\frac{13}{32}$	1-20 UNEF-2A
-37 S	$\frac{131}{64}$	$\frac{17}{4}$	$\frac{3}{8}$ -18NEF-2A
-61 S	$\frac{13}{16}$	$\frac{2}{16}$	$\frac{1}{16}$ -18NEF-2A

2. FOR AVAILABLE CONTACT ARRANGEMENTS AND
ALTERNATE INSERT POSITIONS SEE 17500 SHEETS.
1. SEE "GENERAL DESCRIPTION" FOR ELECTRICAL
& MATERIAL SPECIFICATIONS.

NOTES:

1. DE-BURR ALL SHARP EDGES	
MATERIAL	SPEC.
MATERIAL	SPEC.
MATERIAL	SPEC.
FORGING	SPEC.

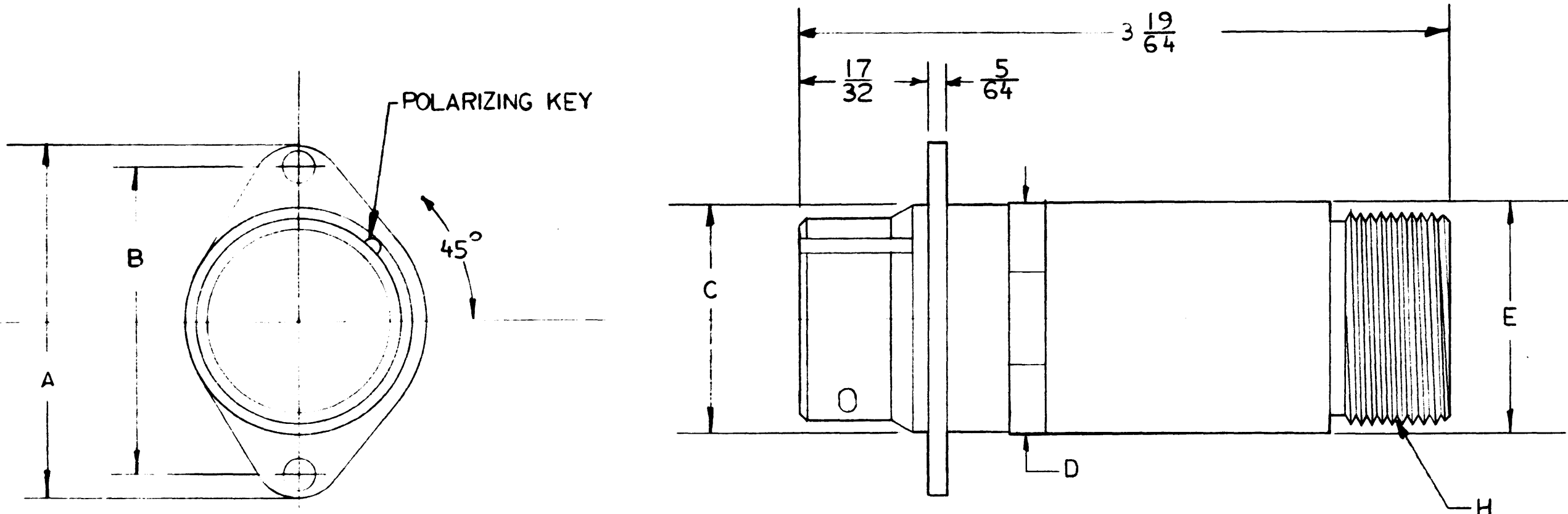
TOLERANCES
FRACTIONS $\pm .015$ DECIMALS $\pm .005$ ANGLES $\pm 1/2^\circ$
UNLESS OTHERWISE SPECIFIED

THE DEUTSCH COMPANY
7000 AVALON BLVD., LOS ANGELES, CALIF.

DS07-2 (ENVELOPE)
QUICK DISCONNECT DS TYPE
FLAME ADAPTER (EXTENSION)

NO.	CHANGE	BY	DATE
DRAWN	STAN BYER		
CHECKED	[Signature]		
APPROVED	[Signature]		
DATE	11-13-52	SCALE	NONE
MOD. 218			
PLUG ENVELOPE			

MOD - 218



SHELL SIZE	A	B	C	D	E	H
-7 P S	$\frac{1}{4}$	$\frac{1}{64}$	$\frac{11}{16}$	$\frac{11}{16}$	$\frac{11}{16}$	$\frac{5}{8}$ -24 NEF-2A
-19 P S	$\frac{1}{32}$	$\frac{1}{32}$	$\frac{15}{16}$	$\frac{61}{64}$	$\frac{61}{64}$	$\frac{7}{8}$ -20 UNEF-2A

NO.	CHANGE	BY	DATE		
DRAWN	<i>H. Bragman</i>				
CHECKED	<i>M. K. ...</i>				
APPROVED	<i>E. P. ...</i>				
DATE 11-27-59		SCALE ~			
MOD-218					
RECEPTACLE/ENVELOPE					

1. DE-BURR ALL SHARP EDGES

TOLERANCES
FRACTIONS $\pm .015$ DECIMALS $\pm .005$ ANGLES $\pm \frac{1}{2}^\circ$
UNLESS OTHERWISE SPECIFIED

THE DEUTSCH COMPANY
7000 AVALON BLVD., LOS ANGELES, CALIF.

DS0031-*⁵ RECEPTACLE,
QUICK DISCONNECT TYPE-WITH
CABLE CLAMP ADAPTER EXTENSION

DRAWN	<i>H. Brangman</i>	
CHECKED	<i>M. J. ...</i>	
APPROVED	<i>[Signature]</i>	
DATE 11-27-59	SCALE	<i>[Signature]</i>

MOD-218
RECEPTACLE/ENVELOPE