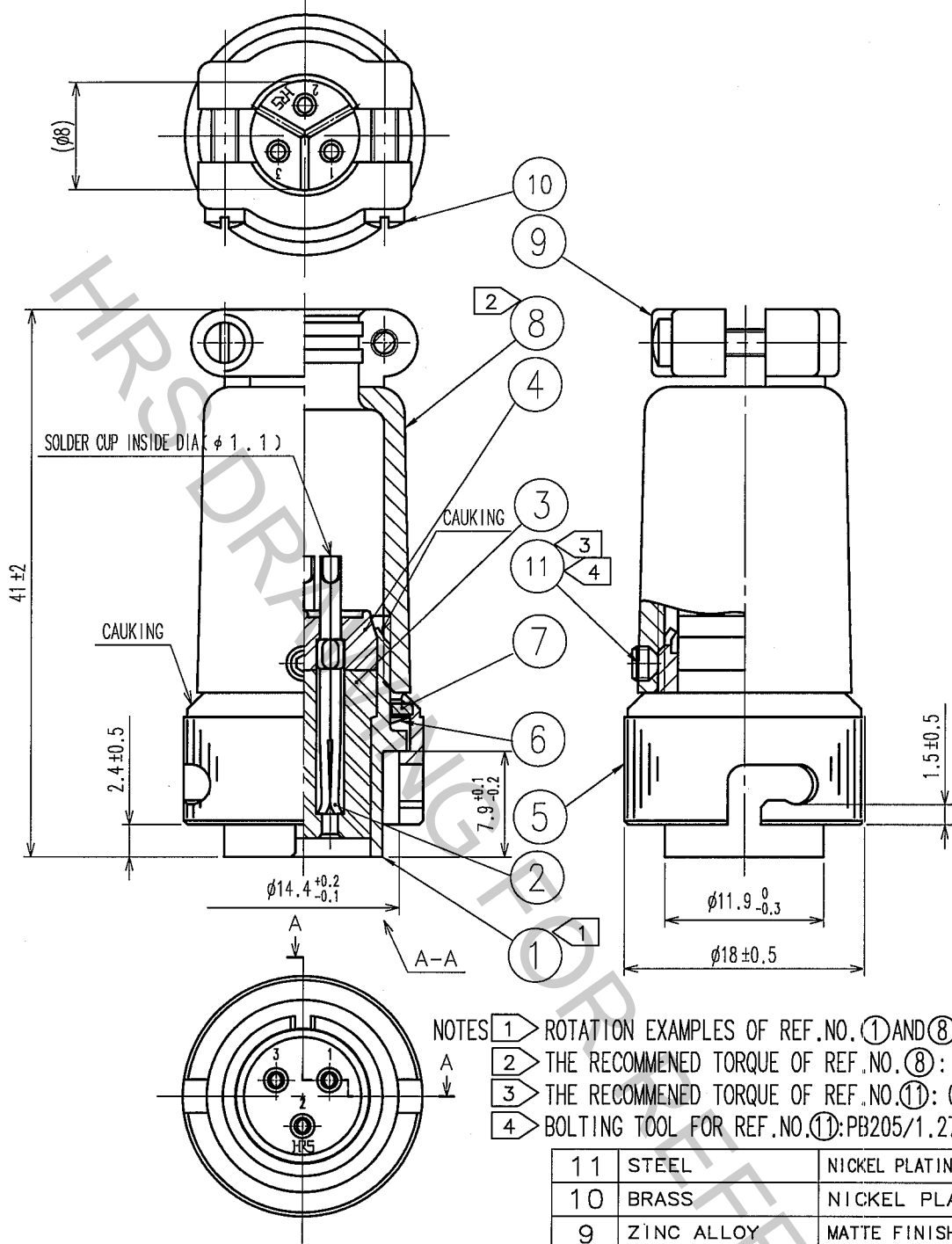


1					2					3					4				
COUNT	DESCRIPTION OF REVISIONS				BY	CHKD	DATE			COUNT	DESCRIPTION OF REVISIONS				BY	CHKD	DATE		
△							..			△							..		
△										△							..		
△										△							..		



- NOTES
- 1 ROTATION EXAMPLES OF REF.NO. ① AND ⑧ ARE SHOWN.
 - 2 THE RECOMMENDED TORQUE OF REF.NO. ⑧: 2 TO 3N · m.
 - 3 THE RECOMMENDED TORQUE OF REF.NO. ⑪: 0.3 TO 0.4N · m.
 - 4 BOLTING TOOL FOR REF.NO. ⑪: PB205/1.27 (CL150-0066-3)

11	STEEL	NICKEL PLATING	THE WIDTH ACROSS OF A HEXAGON SOCKET: 1.27
10	BRASS	NICKEL PLATING	
9	ZINC ALLOY	MATTE FINISH NICKEL PLATING	
8	ZINC ALLOY	MATTE FINISH NICKEL PLATING	
7	BRASS	NICKEL PLATING	
6	BERYLLIUM COPPER	NICKEL PLATING	
5	BRASS	MATTE FINISH NICKEL PLATING	
NO.	MATERIAL	FINISH, REMARKS	

CODE NO. (OLD) CL		DRAWN Y. Yamada 05.08.26	DESIGNED Y. Yamada 05.08.26	CHECKED H. Zembu 05.08.30	APPROVED M. Sato 05.09.01	RELEASED
DRAWING NO. EDC4-112326-71		PART NO. RM12BPE-3S(71)				
SCALE 2 : 1		CODE NO. CL109-0424-2-71				1 1
UNITS mm		HIROSE ELECTRIC CO., LTD.				

TO
R

