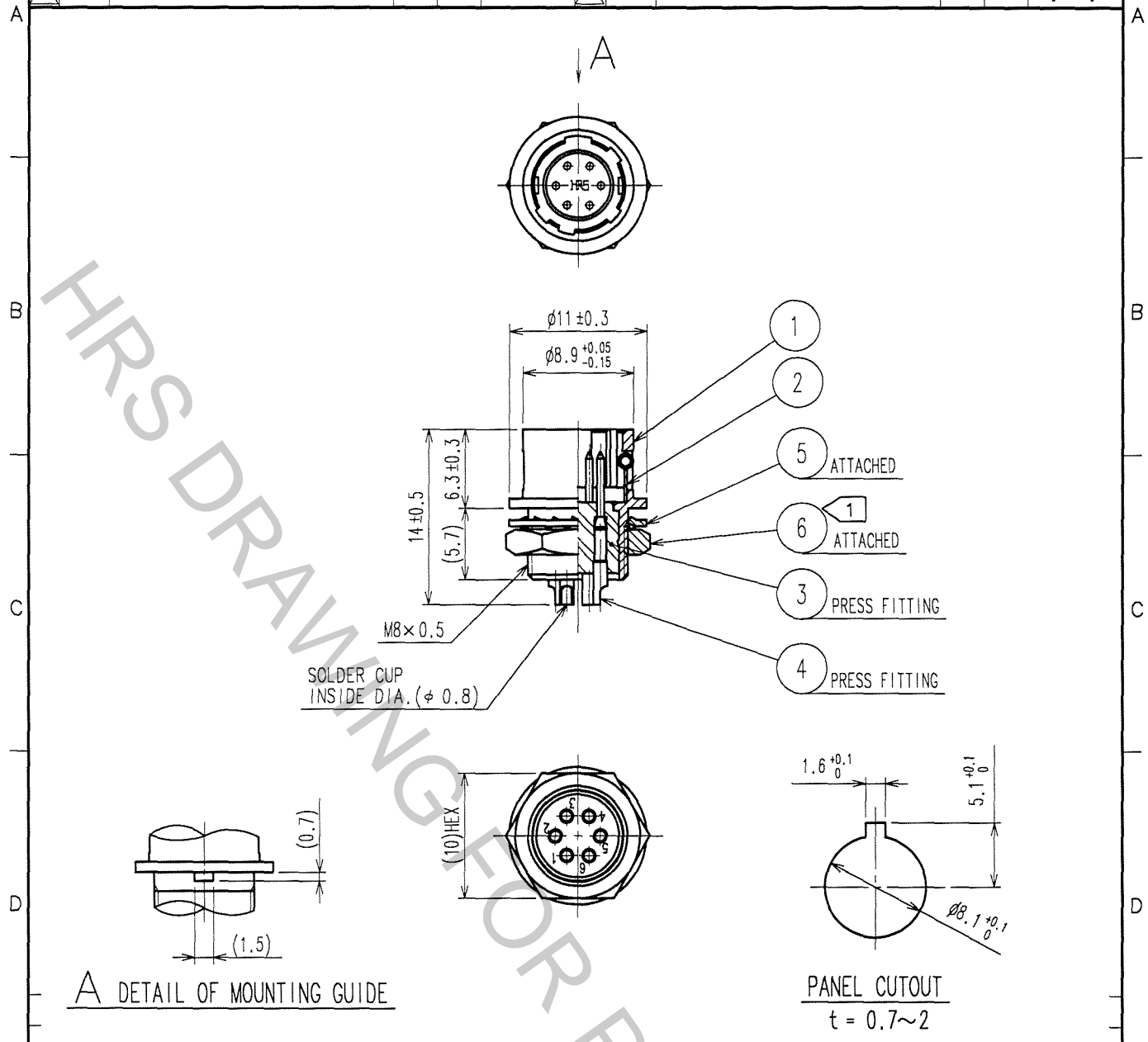


Oct.1.2018 Copyright 2018 HIROSE ELECTRIC CO., LTD. All Rights Reserved.  
In case that the application demands a high level of reliability, such as automotive,  
please contact a company representative for further information.

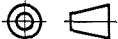

1		2			3		4				
	COUNT	DESCRIPTION OF REVISIONS	BY	CHKD	DATE		COUNT	DESCRIPTION OF REVISIONS	BY	CHKD	DATE
△						△					. .
△						△					. .
△						△					. .



NOTE 1 THE RECOMMENDED CLAMP TORQUE OF REF. NO. ⑥ TO BE 1.5 N · m.  
LOCTITE 242, HENKEL JAPAN OR EQUIVALENT IS RECOMMENDED TO  
PREVENT REF. NO. ⑥ FROM LOOSENING.

			6	BRASS	NICKEL PLATING
3	POLYAMIDE	(BLUE)	5	PHOSPHOR BRONZE	NICKEL PLATING
2	STAINLESS STEEL		4	BRASS	GOLD PLATING 0.2μ m min. NICKEL UNDER PLATING 2μ m min.
1	ZINC ALLOY	MATTE FINISH NICKEL PLATED			
NO.	MATERIAL	FINISH, REMARKS	NO.	MATERIAL	FINISH, REMARKS

CODE NO. (OLD) CL		DRAWN	DESIGNED	CHECKED	APPROVED	RELEASED
		D. Matsume 05.11.19	D. Matsume 05.11.19	E. Kunita 05.11.22	M. Sato 05.11.24	

 SCALE 2 : 1  UNITS mm	DRAWING NO. EDC4-007769-73	PART NO. HR10-7R-6P(73)	<div>1</div> <div>1</div>
	 HIROSE ELECTRIC CO., LTD.	CODE NO. CL110-0034-8-73	

TO
R