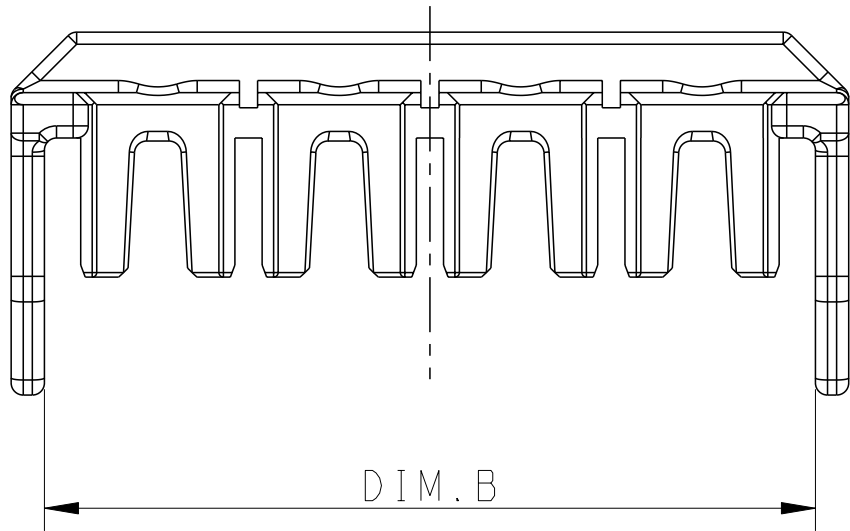
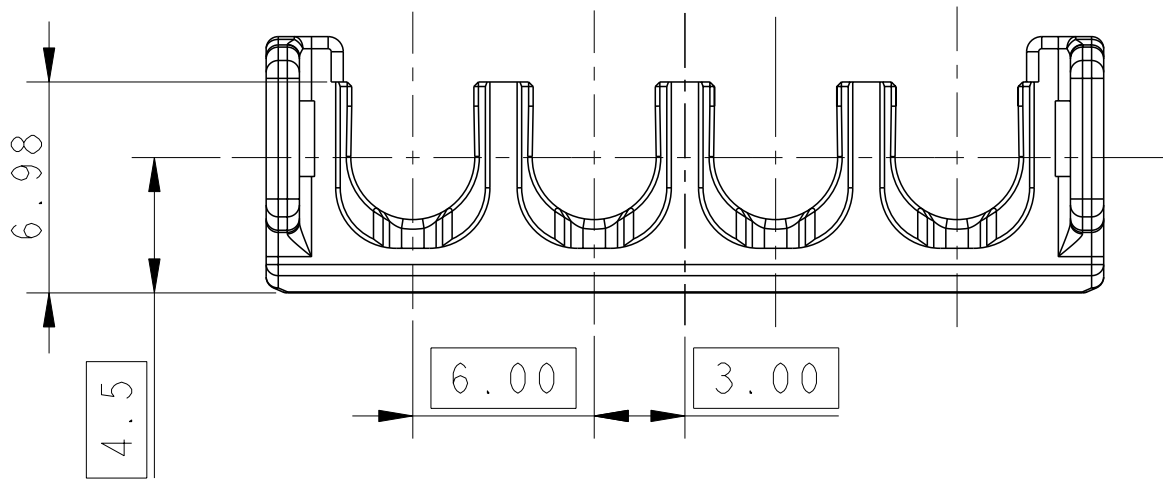


LOC	DIST	REVISIONS					
		P	LTR	DESCRIPTION	DATE	DWN	APVD
-	-		B1	REVISED PER ECR-18-004190	26MAR2018	BW	GJ

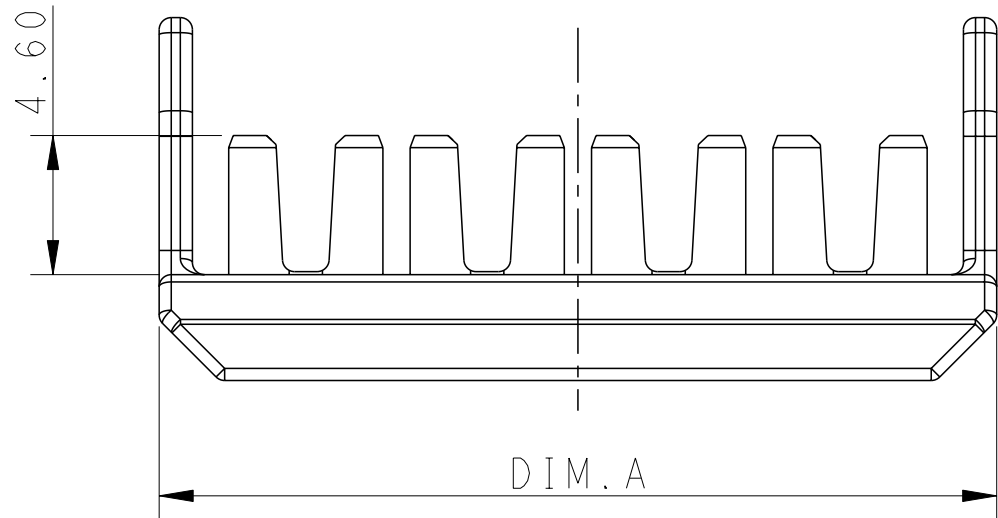
D



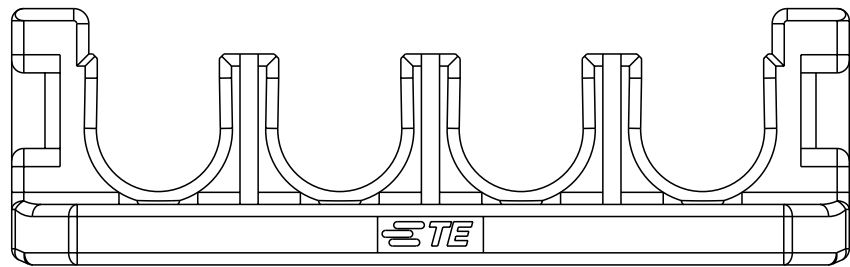
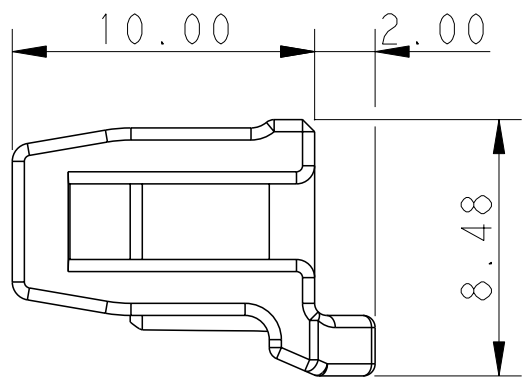
C



B



A



D


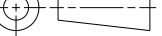
C

B

A

- NOTE
- 1 HIGH TEMP VERSIONS ARE RATED 150°C MAX AND ARE RECOMMENDED FOR USE WITH STANDARE TEMP, HIGH TEMP AND GLOW WIRE RATED HOUSINGS.
- 2 HOT WIRE IGNITION(HWI) VERSIONS ARE MOLDED IN A RESIN THAT COMPLIES WITH TE HOT WIRE IGNITION TEST 109-32026 AND ARE RECOMMENDED FOR USE WITH HWI HOUSINGS THAT ALSO COMPLY.
3. MATING CONN, P/N
CAP HSG: *-1971*7*-*/*-22322**-*/*-22323**-*
PLUG HSG: *-1971*7*-*/*-22322**-*/*-22323**-*
4. PRODUCT SPEC: 108-106118
5. APPLICATION SPEC: 114-106118
6. FLAMMABILITY RATING: UL94V-0
- 7 THIS PRODUCT HAS NOT PASSED VALIDATION TESTING

POS.	DIM. A	DIM. B
1*5	33.70	31.5
1*4	27.70	25.5
1*3	21.70	19.5
1*2	15.70	13.5

THIS DRAWING IS A CONTROLLED DOCUMENT.		DWN TOMMY WU 09JUL2012		<div><div></div><div>TE Connectivity</div></div>							
DIMENSIONS: mm		CHK HAPYE WU 09JUL2012									
		APVD YUHONG MAO 09JUL2012		NAME DOUBLE LOCK PLATE, SINGLE ROW POWER TRIPLE LOCK -							
		PRODUCT SPEC 108-106118									
TOLERANCES UNLESS OTHERWISE SPECIFIED:		APPLICATION SPEC 114-106118		SIZE		CAGE CODE		DRAWING NO		RESTRICTED TO	
0 PLC ±-		WEIGHT -		A200779		C=1971777				-	
1 PLC ±0.35											
2 PLC ±0.25											
3 PLC ±-											
4 PLC ±-											
ANGLES ±-											
MATERIAL SEE TABLE		FINISH -									
		Customer Drawing				SCALE -		SHEET 1 OF 2		REV B1	

