

4

3

2

1

THIS DRAWING IS UNPUBLISHED.	RELEASED FOR PUBLICATION	20
© COPYRIGHT 20	BY -	ALL RIGHTS RESERVED.

LOC	DIST	REVISIONS					
GP	00	P	LTR	DESCRIPTION	DATE	DWN	APVD
			A	RELEASE	31DEC2015	JY	SH

HEAT SINK CLIP

HEAT SINK

1X3 CAGE ASSEMBLY

2170768-2 AS SHOWN
SCALE 2:1

57.57

3X 18.75±0.10

8.90±0.10
3X

19.00 19.00

SCALE 2:1

18.50 19.00 7.88

VIEW V-V
SCALE 2:1

3.0 MAX

DETAIL D
SCALE 4:1

- COMPONENTS
CAGE ASSEMBLY: NICKEL-SILVER ALLOY
HEAT SINK: ALUMINUM/BLACK ANODIZE
HEAT SINK CLIP: STAINLESS STEEL
EMI GASKET: CONDUCTIVE RUBBER
- REFERENCE APPLICATION SPECIFICATION 114-32023
FOR RECOMMENDED DRILL HOLE DIAMETER AND
PLATING THICKNESS
- DATUM AND BASIC DIMENSION ESTABLISHED BY CUSTOMER
- DIMENSION APPLIES WITH MODULE INSERTED IN CAGE
- HEAT SINKS, HEAT SINK CLIPS AND LIGHT PIPES
ARE SHIPPED ASSEMBLED ON CAGE
- MINIMUM PC BOARD THICKNESS:
SINGLE SIDED: 1.57 MIN
DOUBLE SIDED: 3.00 MIN
- DATUM -A- IS TOP SURFACE OF THE HOST BOARD.
- THESE HOLES ARE OPTIONAL WHEN THE REAR PINS ARE REMOVED.
- MATES WITH QSFP28 MSA COMPATIBLE TRANSCEIVER.
- DATE CODE (YYWWD) MARKED APPROXIMATELY AS SHOWN.

57.15 REF

9.72 REF

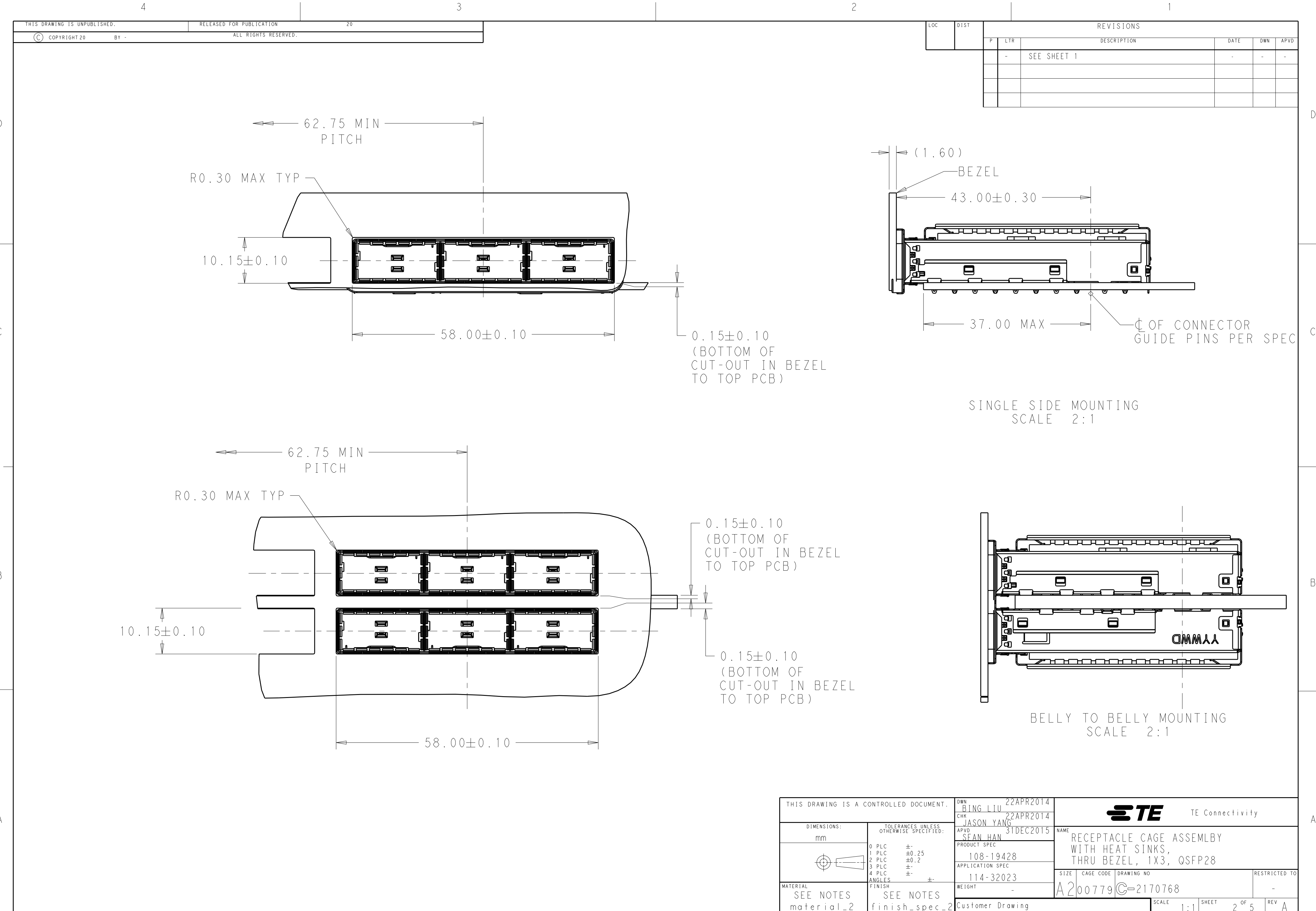
2.05 TYP

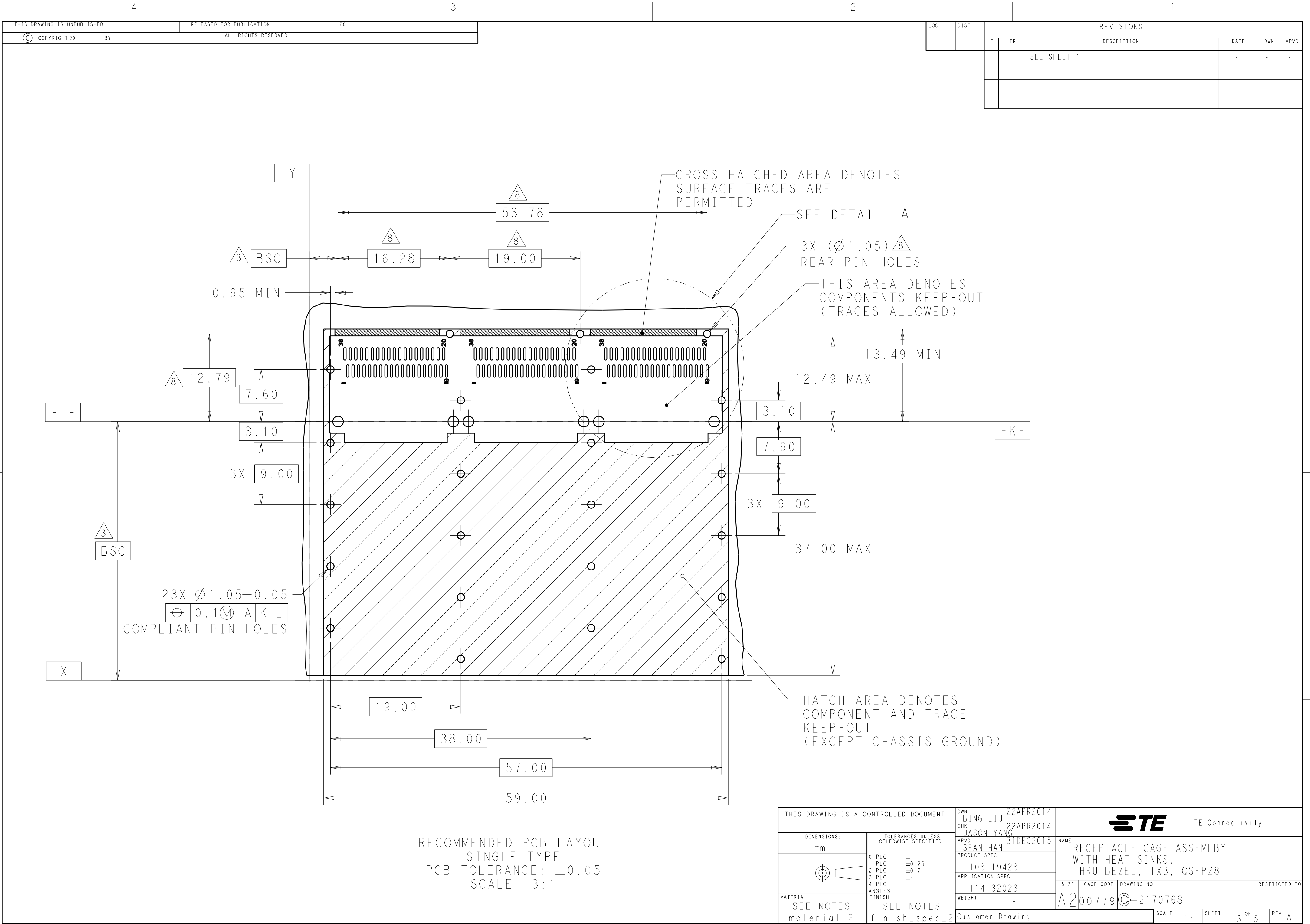
SEE DETAIL D

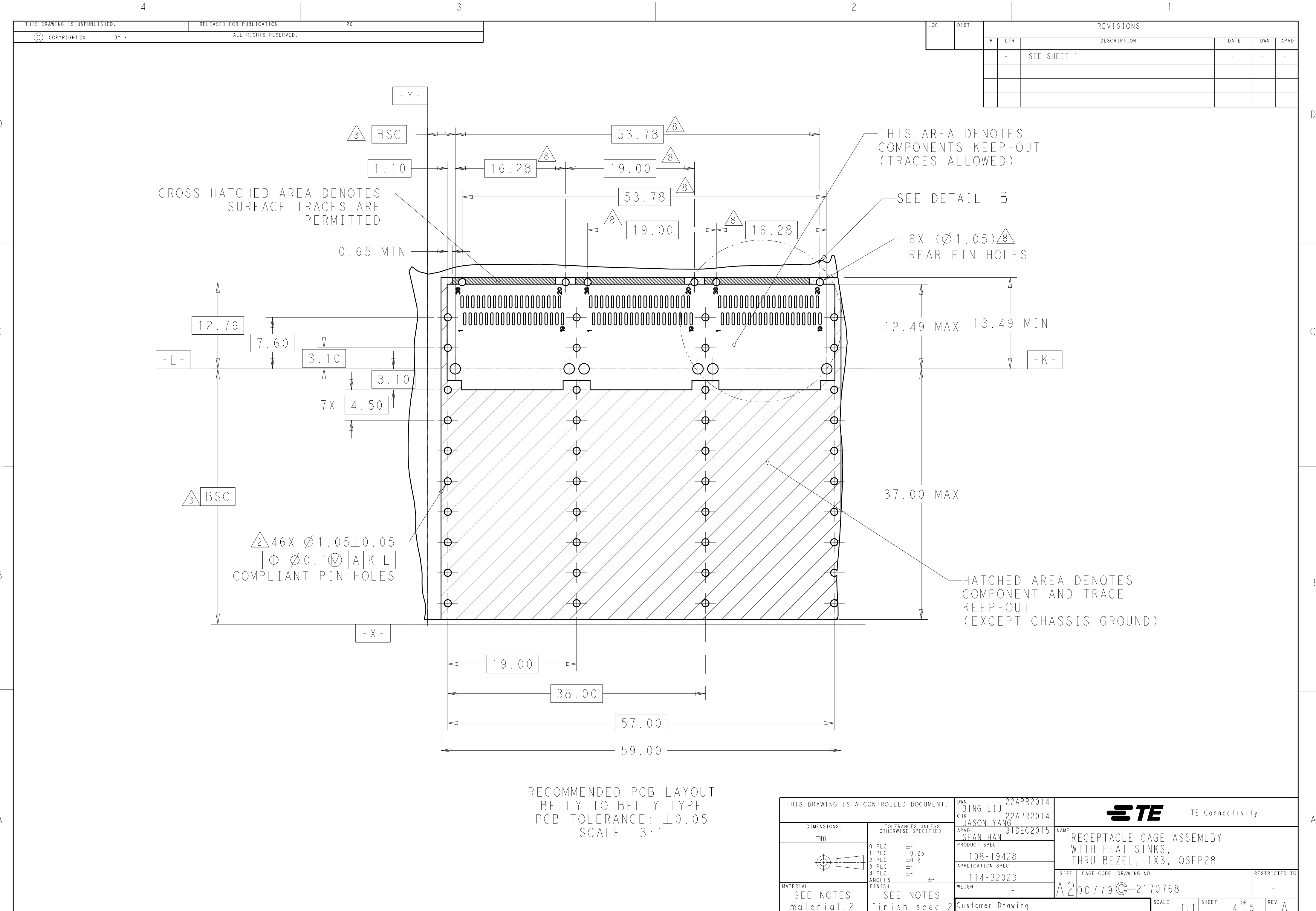
OF GUIDE POST

23.0	WITHOUT	NETWORKING	2170768-6
16.0	WITHOUT	SAN	2170768-5
13.7	WITHOUT	PCI	2170768-4
23.0	WITH	NETWORKING	2170768-3
16.0	WITH	SAN	2170768-2
13.7	WITH	PCI	2170768-1
DIM A	REAR PINS OPTIONAL	APPLICATION	PART NUMBER

THIS DRAWING IS A CONTROLLED DOCUMENT.		DWN	22APR2014	STE TE Connectivity	
DIMENSIONS:		CHK	22APR2014		
mm		APVD	31DEC2015		
TOLERANCES UNLESS OTHERWISE SPECIFIED:		NAME	SEAN HAN		
0 PLC ±		PRODUCT SPEC	108-19428	RECEIPTABLE CAGE ASSEMBLY WITH HEAT SINKS, THRU BEZEL, 1X3, QSFP28	
1 PLC ±0.25		APPLICATION SPEC	114-32023		
2 PLC ±0.2		WEIGHT	-	SIZE	CAGE CODE
3 PLC ±		Customer Drawing	SCALE 1:1	DRAWING NO	RESTRICTED TO
4 PLC ±				A200779C-2170768	-
ANGLES ±					
FINISH ±					
SEE NOTES		SEE NOTES			







THIS DRAWING IS UNPUBLISHED.		RELEASED FOR PUBLICATION		20		LOC		DIST		REVISIONS					
© COPYRIGHT 20		BY -		ALL RIGHTS RESERVED.						P	LTR	DESCRIPTION	DATE	DWN	APVD
										-	-	SEE SHEET 1	-	-	-

0 PLC		±
1 PLC		±0.25
2 PLC		±0.2
3 PLC		±
4 PLC		±
ANGLES		±
FINISH		±

THIS DRAWING IS A CONTROLLED DOCUMENT.		DWN	22APR2014
		CHK	BING LIU
		APVD	JASON YANG
		APVD	SEAN HAN
		PRODUCT SPEC	108-19428
		APPLICATION SPEC	114-32023
		WEIGHT	-
		Customer Drawing	

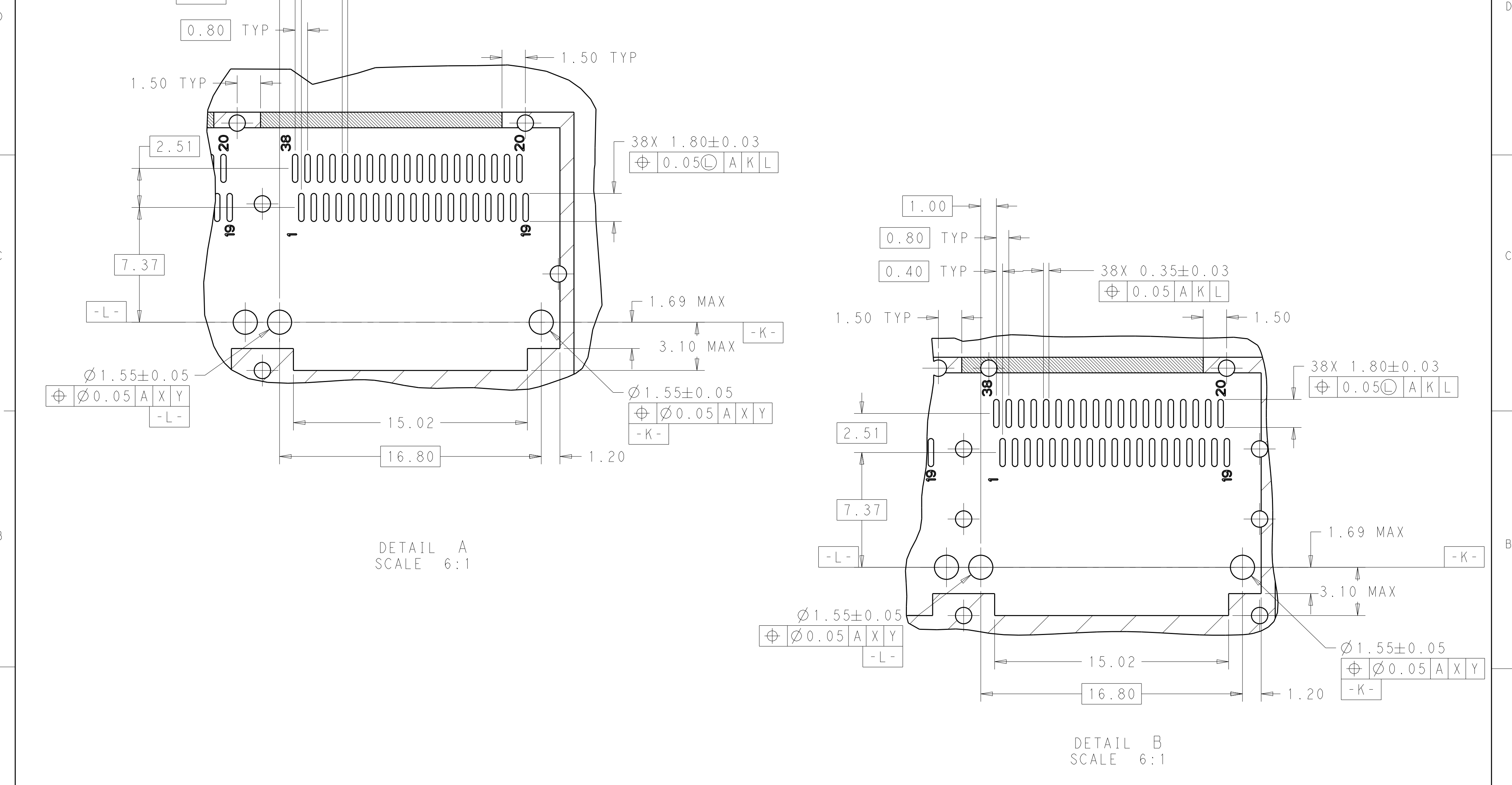
NAME		RECEPTACLE CAGE ASSEMBLY	
		WITH HEAT SINKS,	
		THRU BEZEL, 1X3, QSFP28	
SIZE	CAGE CODE	DRAWING NO	RESTRICTED TO
A2	00779	C-2170768	-
SCALE	1:1	SHEET	4 OF 5
REV	A		

RECOMMENDED PCB LAYOUT
BELLY TO BELLY TYPE
PCB TOLERANCE: ±0.05
SCALE 3:1

THIS DRAWING IS A CONTROLLED DOCUMENT.		DWN	22APR2014
		CHK	BING LIU
		APVD	JASON YANG
		APVD	SEAN HAN
		PRODUCT SPEC	108-19428
		APPLICATION SPEC	114-32023
		WEIGHT	-
		Customer Drawing	

NAME		RECEPTACLE CAGE ASSEMBLY	
		WITH HEAT SINKS,	
		THRU BEZEL, 1X3, QSFP28	
SIZE	CAGE CODE	DRAWING NO	RESTRICTED TO
A2	00779	C-2170768	-
SCALE	1:1	SHEET	4 OF 5
REV	A		

	-	SEE SHEET 1	-	-	-



THIS DRAWING IS A CONTROLLED DOCUMENT.

DWN

BING LIU

22APR2014

CHK

JASON YANG

22APR2014

APVD

SEAN HAN

31DEC2015

DIMENSIONS:

mm

TOLERANCES UNLESS OTHERWISE SPECIFIED:

0 PLC

±

1 PLC

±0.25

2 PLC

±0.2

3 PLC

±

4 PLC

±

ANGLES

±

FINISH

SEE NOTES

MATERIAL

SEE NOTES

material_2

finish_spec_2

Customer Drawing

PRODUCT SPEC

108-19428

APPLICATION SPEC

114-32023

WEIGHT

-

NAME

RECEPTACLE CAGE ASSEMBLY WITH HEAT SINKS, THRU BEZEL, 1X3, QSFP28

SIZE

A2

CAGE CODE

00779

DRAWING NO

C-2170768

RESTRICTED TO

-

SCALE

1:1

SHEET

5

OF

5

REV

A