

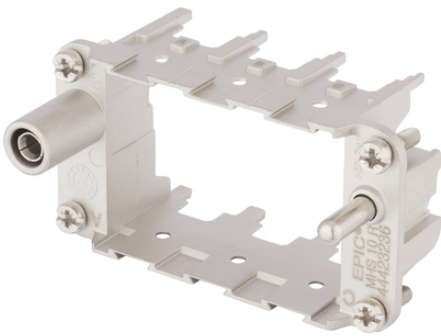
## EPIC® MH 10 multi frame

High flexibility by the use of any combination of inserts in one connector

### Info

Stamped gold plated contacts with 0.8mm diameter for D-Sub inserts

Frame system for modules



Assembly time



Wind Energy



Solar Energy



Rail



Mechanical and plant engineering

### Benefits

Multi frame for own and competition modules

EPIC® MH system is mateable with the market standard

The mix of different functions in one plug guarantees high flexibility

Railway applications

- Fire protection on railway vehicles: Test according EN 45545-2. Requirement sets R22 and R23. Hazard level HL1, HL2 and HL4

PE connection from 1mm<sup>2</sup> up to 6mm<sup>2</sup> with end sleeve, 10mm<sup>2</sup> with adapter

### Application range

Mechanical engineering

Robotics industry

Plant engineering

Renewable energy

Railway applications / vehicle construction

Last Update (20.10.2017)

©2017 Lapp Group - Technical changes reserved

Product Management [www.lappkabel.de](http://www.lappkabel.de)

You can find the current technical data in the corresponding data sheet.

PN 0456 / 02\_03.16

## EPIC® MH 10 multi frame

### Technical Data

Classification:	ETIM 5.0 Class-ID: EC002641 ETIM 5.0 Class-Description: Modular connector
Material:	Zinc die-cast
Cycle of mechanical operation:	500
Temperature range:	-40 °C +125 °C

### Note

Photographs are not to scale and do not represent detailed images of the respective products.  
Prices are net prices without VAT and surcharges. Sale to business customers only.



## EPIC® MH 10 multi frame

Article number	Article description	Contact type	Slots
44423236	EPIC® MHS 10 R (A, B, C)	male	3
44423237	EPIC® MHB 10 R (a, b, c)	female	3

Last Update (20.10.2017)

©2017 Lapp Group - Technical changes reserved

Product Management [www.lappkabel.de](http://www.lappkabel.de)

You can find the current technical data in the corresponding data sheet.

PN 0456 / 02\_03.16