


PCB TERMINAL BLOCKS

5mm DIN Rail Mounted Inverted/Reverse

- Horizontal orientations
- Polarized moldings
- Can be reversed on DIN clips
- Also available in 5.08mm pitch
- Molded in green UL94-V0 flame retardant PA 66
- 2.5mm² (28-14AWG)
-  approved
- 6-12 poles standard (13-24 also available)

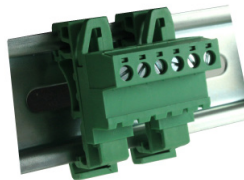
SPECIFICATION

Rating	UL=15A/300V IEC 20A/450V
Insulation resistance	500MΩ/500V
Withstand Voltage	AC2000V/1min
Contact Resistance	20mΩ (max)
Working Temperature	-40°C to 105+°C
Mouldings	UL94-V0 Flame retardant PA66
Pin/Terminal	Brass, Tin plated
Rising Clamp	Brass, nickel plated
Screw/Torque	M3 Steel, zinc plated 0.5Nm

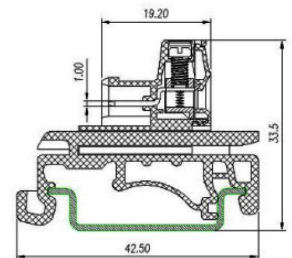
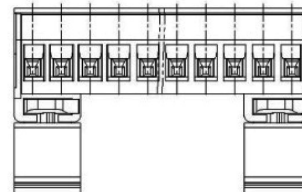
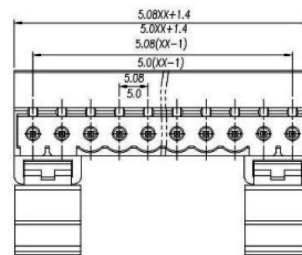
DIN Rail Mounting Female Horizontal

TYPE NO.	POLES	LENGTH
CTBPD96HG/6	6	31.4mm
CTBPD96HG/7	7	36.4mm
CTBPD96HG/8	8	41.4mm
CTBPD96HG/9	9	46.4mm
CTBPD96HG/10	10	51.4mm
CTBPD96HG/11	11	56.4mm
CTBPD96HG/12	12	61.4mm

CTBPD96HG



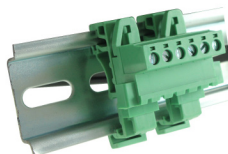
Excludes DIN Rail



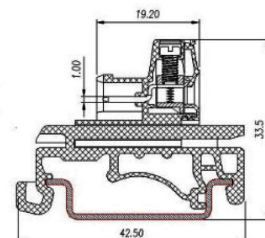
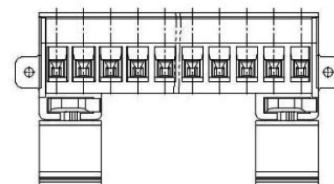
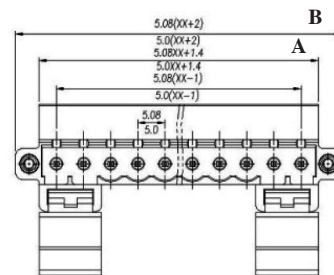
DIN Rail Mounting Female Horizontal, Flanged

TYPE NO.	POLES	LENGTH A	LENGTH B
CTBPD96HG/6FL	6	31.4mm	40.0mm
CTBPD96HG/7FL	7	36.4mm	45.0mm
CTBPD96HG/8FL	8	41.4mm	50.0mm
CTBPD96HG/9FL	9	46.4mm	55.0mm
CTBPD96HG/10FL	10	51.4mm	60.0mm
CTBPD96HG/11FL	11	56.4mm	65.0mm
CTBPD96HG/12FL	12	61.4mm	70.0mm

CTBPD96HG/FL




Excludes DIN Rail



PCB TERMINAL BLOCKS

5.08mm DIN Rail Mounted Inverted/Reverse

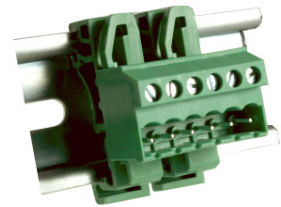
- Horizontal & vertical orientations
- Polarized moldings
- Can be reversed on DIN clips
- Also available in 5mm pitch
- Molded in green UL94-V0 flame retardant PA 66
- 2.5mm² (28-14AWG)
-  approved
- 6-12 poles standard (13-24 also available)

SPECIFICATION	
Rating	UL=15A/300V IEC 20A/450V
Insulation resistance	500MΩ/500V
Withstand Voltage	AC2000V/1min
Contact Resistance	20mΩ (max)
Working Temperature	-40°C to 105+°C
Mouldings	UL94-V0 Flame retardant PA66
Pin/Terminal	Brass, Tin plated
Rising Clamp	Brass, nickel plated
Screw/Torque	M3 Steel, zinc plated 0.5Nm

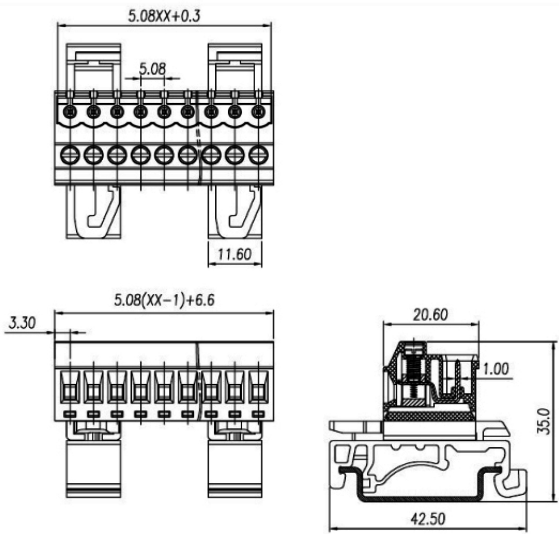
DIN Rail Male Vertical Connector

TYPE NO.	POLES	LENGTH
CTBPD96VJ/6	6	32.0mm
CTBPD96VJ/7	7	37.1mm
CTBPD96VJ/8	8	42.2mm
CTBPD96VJ/9	9	47.2mm
CTBPD96VJ/10	10	52.3mm
CTBPD96VJ/11	11	57.4mm
CTBPD96VJ/12	12	62.5mm

CTBPD96VJ



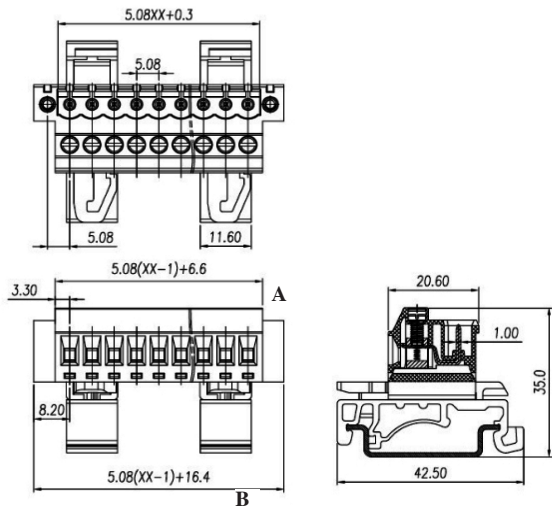
Excludes DIN Rail



DIN Rail Male Vertical Connector, Flanged

TYPE NO.	POLES	LENGTH A	LENGTH B
CTBPD96VJ/6FL	6	32.0mm	41.8mm
CTBPD96VJ/7FL	7	37.1mm	46.9mm
CTBPD96VJ/8FL	8	42.2mm	52.0mm
CTBPD96VJ/9FL	9	47.2mm	57.0mm
CTBPD96VJ/10FL	10	52.3mm	62.1mm
CTBPD96VJ/11FL	11	57.4mm	67.2mm
CTBPD96VJ/12FL	12	62.5mm	72.3mm

CTBPD96VJ/FL



PCB TERMINAL BLOCKS

PCB
TERMINAL
BLOCKS

INTER-
CONNECTION

FUSES &
FUSE-
HOLDERS

LEDs &
INDICATORS

MINIATURE
SWITCHES

LIMIT &
SAFETY
SWITCHES

CONTROL
PRODUCTS

INTERFACE
MODULES &
SUPPORTS

RELAY
BASES

DIN RAIL
ENCLOSURES

BATTERIES

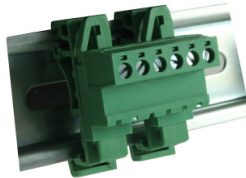
SOLAR
PANELS

TRANS-
FORMERS

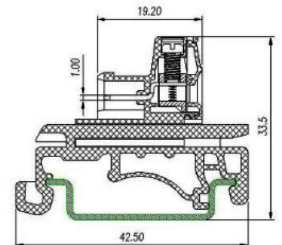
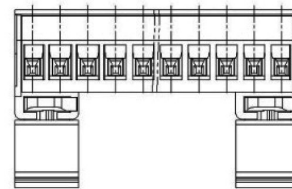
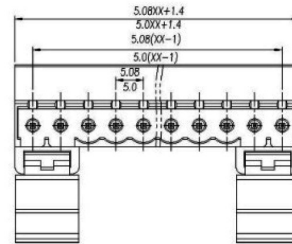
5.08mm DIN Rail Mounting Female Horizontal

TYPE NO.	POLES	LENGTH
CTBPD96HJ/6	6	31.9mm
CTBPD96HJ/7	7	37.0mm
CTBPD96HJ/8	8	42.0mm
CTBPD96HJ/9	9	47.1mm
CTBPD96HJ/10	10	52.2mm
CTBPD96HJ/11	11	57.3mm
CTBPD96HJ/12	12	62.4mm

CTBPD96HJ



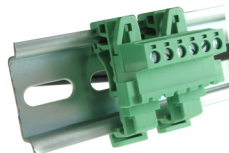
Excludes DIN Rail



5.08mm DIN Rail Mounting Female Horizontal, Flanged

TYPE NO.	POLES	LENGTH A	LENGTH B
CTBPD96HJ/6FL	6	31.9mm	40.6mm
CTBPD96HJ/7FL	7	37.0mm	45.7mm
CTBPD96HJ/8FL	8	42.0mm	50.8mm
CTBPD96HJ/9FL	9	47.1mm	55.9mm
CTBPD96HJ/10FL	10	52.2mm	61.0mm
CTBPD96HJ/11FL	11	57.3mm	66.0mm
CTBPD96HJ/12FL	12	62.4mm	71.1mm

CTBPD96HJ/FL



Excludes DIN Rail

