

V3-129

M

DRAWING
NUMBER

ISSUE
X 8 8 12

REVISIONS

A	CO20189	W E G	17 JUNE 65
B	CO21900	O M W	13 OCT 66
C	CO24941	M B S	3 DEC 68
D	CO26075	M B S	26 AUG 69
E	CO28095	M B S	9 NOV 70
F	CO31748	L S D	4 APR 73
G	CO39921	SMA	29 SEPT 86
H	CO74476	K D R	21 APR 93

REPLACES

RELEASE NO.

CHECK

CHECK

CHECK

CHECK

CHECK

CHECK

CHECK

CHECK

CHECK

CHECK

CHECK

CHECK

CHECK

CHECK

CHECK

CHECK

CHECK

CHECK

CHECK

CHECK

CHECK

CHECK

CHECK

CHECK

CHECK

CHECK

CHECK

CHECK

CHECK

CHECK

CHECK

CHECK

CHECK

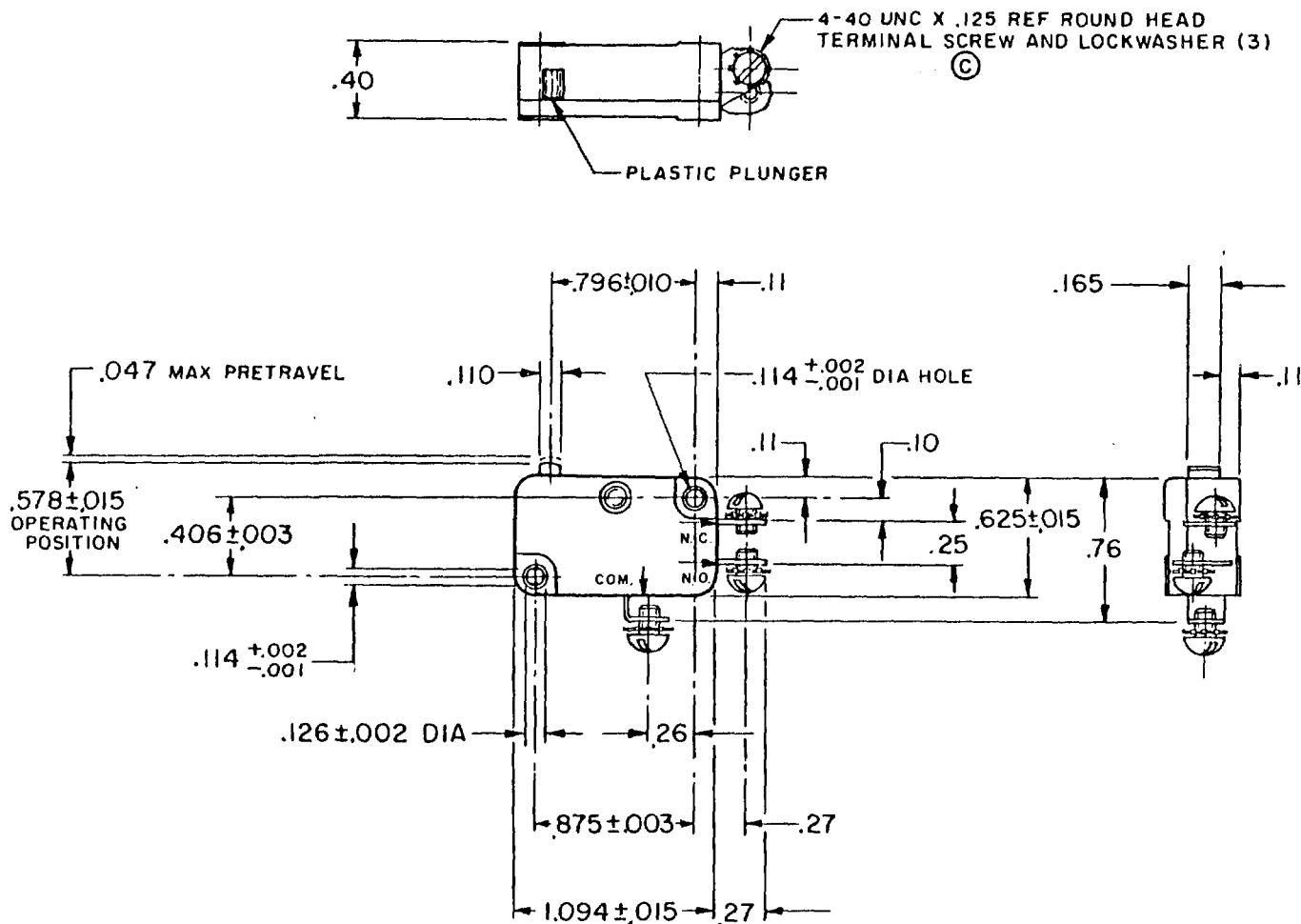
CHECK

CHECK

CHECK

CHECK

CHECK



NOTE—

I—SWITCH MATERIAL WILL WITHSTAND TEMPERATURE OF 300° F

THIS DRAWING COVERS A PROPRIETARY ITEM AND IS THE PROPERTY OF MICRO SWITCH, A DIVISION OF HONEYWELL. THIS DRAWING IS NOT TO BE COPIED OR USED WITHOUT THE APPROVAL OF MICRO SWITCH.

CHARACTERISTICS

OPERATING FORCE ——— 8 OZ MAX
RELEASE FORCE ——— 2 OZ MIN
DIFFERENTIAL TRAVEL ——— .006—.016
OVERTRAVEL ——— .040 MIN
FREE POSITION ——— .625 MAX
RELEASE TRAVEL ——— .007 MIN

ELECTRICAL DATA

CONTACT ARRANGEMENT
S P D T

— L156 — 11A—1/3HP—125—250—277 VAC
1/2A—125 VDC; 1/4A—250 VDC
4A—125 VAC "L"



SCALE FULL

DO NOT SCALE PRINT

UNLESS OTHERWISE NOTED
DIMENSIONS ARE IN INCHES

TOLERANCES ARE

ONE PLACE (.0) ±.01
TWO PLACE (.00) ±.005
THREE PLACE (.000) ±.001
ANGLES 1/2°

WEIGHT .017 LB

50378

DRAWN

WEG 17 JUNE 65