

6

5

4

3

2

1

D

C

B

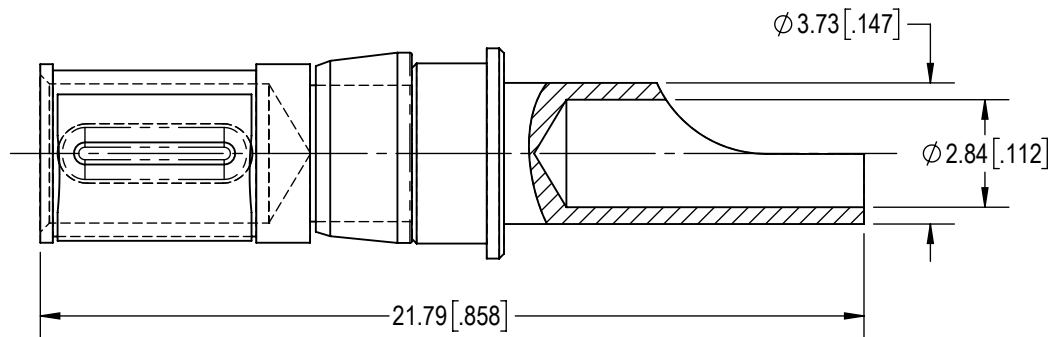
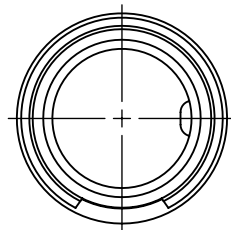
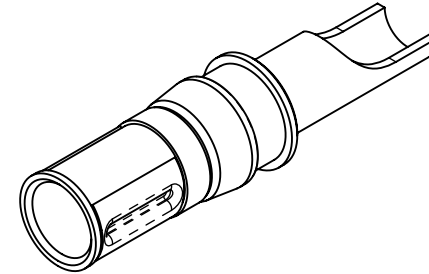
A

D



C

B

A

**NOTES:**

- MATERIAL AND FINISHES:
CONTACT: PRECISION MACHINED COPPER ALLOY, GOLD FLASH OVER NICKEL PLATE.
RETENTION RING: POLYETHERIMIDE, COLOR: BLACK.
SPRING CLIP: BERYLLIUM COPPER, GOLD FLASH OVER NICKEL PLATE.
- DETAILED PRODUCT, MECHANICAL AND ELECTRICAL INFORMATION IS AVAILABLE IN THE LATEST STANDARD DENSITY COMBO-D PRODUCT PUBLICATION AT CONNECTPOSITRONIC.COM.
- CONTACT IS COMPLIANT TO THE CURRENT RoHS DIRECTIVE.

BY SB		CHK SS		3RD ANGLE 		<p>POSITRONIC BELIEVES THE DATA ON THE DRAWING TO BE RELIABLE. THE USER EMPLOYS SUCH INFORMATION AT HIS OWN DISCRETION AND RISK.</p> <p>POSITRONIC ASSUMES NO RESPONSIBILITY FOR RESULTS OBTAINED OR DAMAGES INCURRED FROM USE OF SUCH INFORMATION IN WHOLE OR IN PART.</p>		 Positronic® CONNECTPOSITRONIC.COM	
APR PA		RELEASED DATE: 2019-08-29		SCALE NTS					
TOLERANCES					PART NUMBER FS4012D/AA		SERIES CBD/CBM		
±0.03mm [.001 INCHES] FOR MALE CONTACT MATING DIAMETERS ±0.08mm [.003 INCHES] FOR CONTACT TERMINATION DIAMETERS ±0.13mm [.005 INCHES] FOR ALL OTHER DIAMETERS ±0.38mm [.015 INCHES] FOR ALL OTHER DIMENSIONS ±5° FOR ALL ANGLES DIMENSION ARE IN MILLIMETERS [INCHES]					TITLE FS4012D/AA				
CREATED ON: 2019-07-26					SHEET SHEET 1 OF 1		REV A		

6

5

4

3

2

1