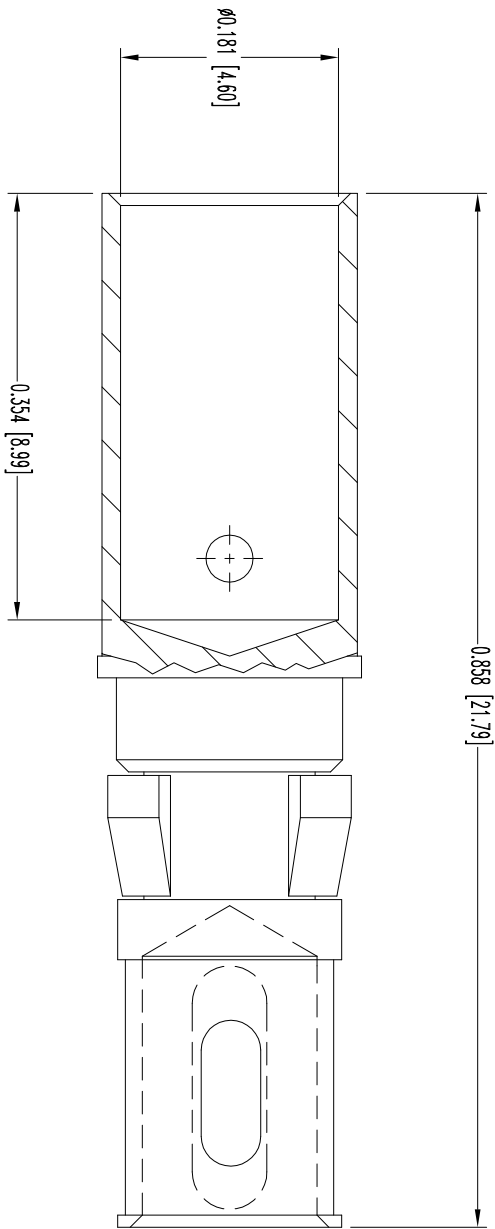


THIS DRAWING CONTAINS INFORMATION PROPRIETARY TO POSITRONIC AND ITS SUBSIDIARIES. POSITRONIC BELIEVES THE INFORMATION CONTAINED HEREIN TO BE CORRECT. TECHNICAL INFORMATION IS GIVEN FREE OF CHARGE. THE USER BEAR'S SUCH INFORMATION AT HIS OWN DISCRETION AND RISK. POSITRONIC ASSUMES NO RESPONSIBILITY FOR REPRODUCTION OF THIS DRAWING OR FOR ANY LOSS OF SUCH INFORMATION IN WHOLE OR IN PART.


| DATE | REV | REVISION RECORD | APP | DR | CK |
|----------|-----|-----------------|------|----|------|
| 12-30-05 | NC | ECO 25268 | RW | YK | COLF |
| 3-25-10 | A | ECO 32285 | COLF | BE | SY |
| 11-9-10 | B | ECO 34713 | COLF | BE | COLF |
| 10-20-16 | C | ECO 52889 | CM | CM | CM |

SK6912



NOTES:

1. MATERIAL AND FINISH:
CONTACT: PRECISION MACHINED COPPER ALLOY, GOLD FLASH OVER NICKEL.
SPRING CLIP: BERYLLIUM COPPER, GOLD FLASH OVER NICKEL PLATE.
RETENTION RING: POLYETHERIMIDE, COLOR BLACK.
2. DETAILED PRODUCT, ELECTRICAL, AND MECHANICAL INFORMATION IS AVAILABLE IN THE LATEST STANDARD DENSITY COMBO-D PRODUCT PUBLICATION.
VISIT CONNECTPOSITRONIC.COM/PRODUCTS/1/STANDARDENSITYCOMBO-D-OR-CONNECTPOSITRONIC.COM.
3. CONTACTS ARE ROHS COMPLIANT PER ROHS DIRECTIVE 2002/95/EC OF 27 JAN 2003.
4. DIMENSIONS ARE IN INCHES [MILLIMETERS].



POSITRONIC INDUSTRIES INC.
www.connectpositronic.com FSCM 28198

| | | | | | |
|------------------------------------|--|-------------------|--|------------------------------|--|
| DECIMAL TOL. ± 0.015 [0.38] | | SCALE N.T.S. | | DRAWN BY YK | |
| ANGULAR TOL. $\pm 5^\circ$ | | APPROVED BY RW | | | |
| TITLE CBD SERIES | | DATE 12-30-05 | | DRAWING NUMBER FC4008D/AA | |
| | | | | REV. C | |