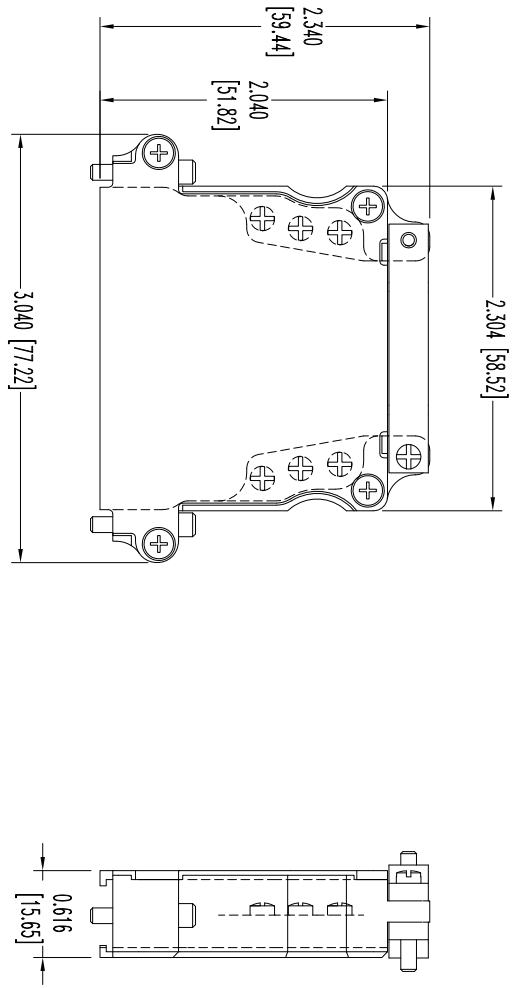
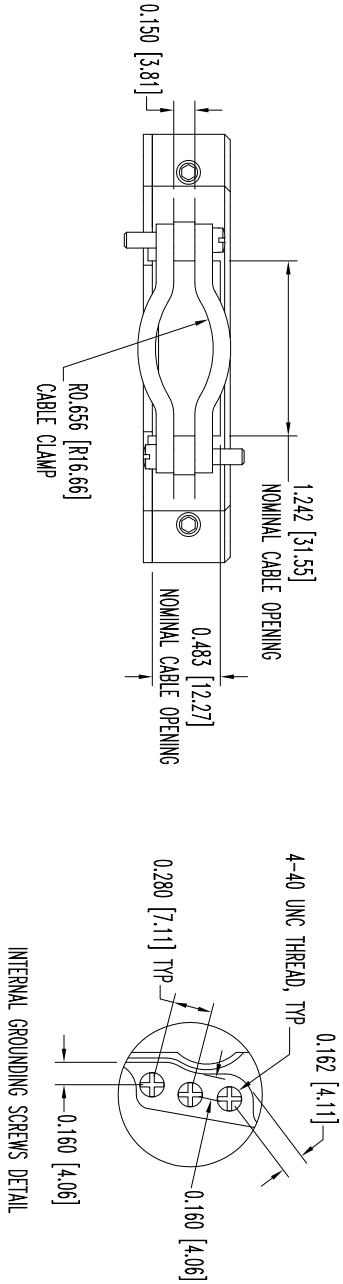


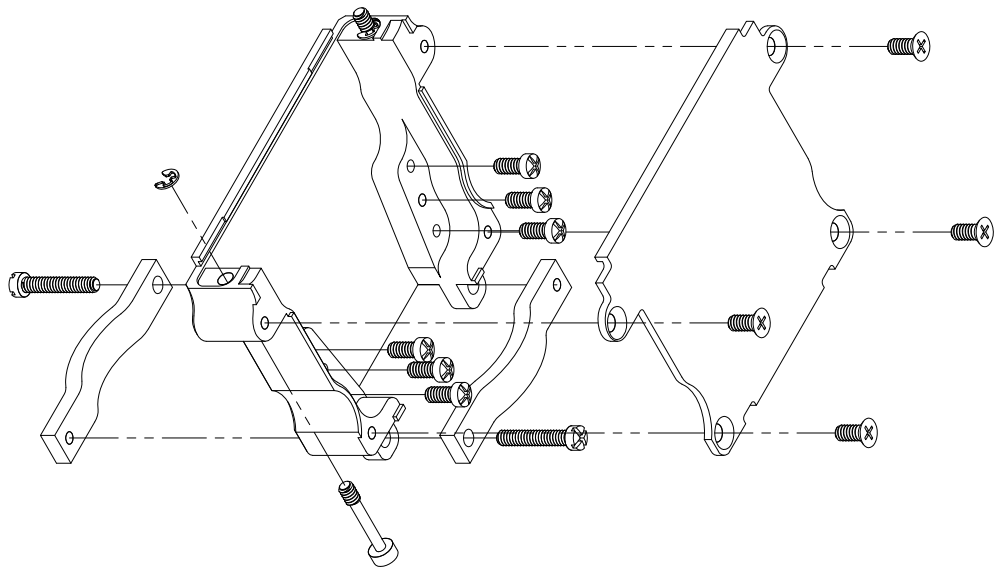
THIS DRAWING CONTAINS INFORMATION PROPRIETARY TO CONNECT POSITRONIC, INC. AND IS NOT TO BE REPRODUCED OR TRANSMITTED IN ANY FORM OR BY ANY MEANS, ELECTRONIC OR MECHANICAL, INCLUDING PHOTOCOPYING, RECORDING, OR BY ANY INFORMATION STORAGE AND RETRIEVAL SYSTEM, WITHOUT THE WRITTEN PERMISSION OF CONNECT POSITRONIC, INC. THE DATA ON THIS DRAWING TO BE RELIABLE SINCE THE USER EMPLOY'S SUCH INFORMATION AT HIS OWN DISCRETION. CONNECT POSITRONIC, INC. ASSUMES NO LIABILITY FOR RESULTS OBTAINED OR DAMAGES INCURRED FROM USE OF SUCH INFORMATION IN WHOLE OR IN PART.

SK12936

DATE	REV	REVISION RECORD	APP	DR	CK
11-2	NC	ECO 34671	COLF	ME	COLF
8-12	A	ECO 40433	COLF	BE	COLF
13					



EXPLODED VIEW



NOTES:

1. MATERIAL AND FINISHES:  
HOOD, COVER AND CABLE CLAMPS: ALUMINUM, ELECTROLESS NICKEL FINISH.  
SCREWS: STEEL, NICKEL FINISH.
2. DETAILED PRODUCT, MECHANICAL, AND ELECTRICAL INFORMATION IS AVAILABLE IN THE LATEST D-SUB ACCESSORY PRODUCT PUBLICATION. VISIT [CONNECTPOSITRONIC.COM/PRODUCTS/58/D-SUBMINIATUREACCESSORIES](http://CONNECTPOSITRONIC.COM/PRODUCTS/58/D-SUBMINIATUREACCESSORIES) OR [CONNECTPOSITRONIC.COM](http://CONNECTPOSITRONIC.COM).
3. HOODS ARE COMPLAINT TO THE CURRENT ROHS DIRECTIVE.
4. DIMENSIONS ARE IN INCHES [MILLIMETERS].



**POSITRONIC INDUSTRIES INC.**  
[www.connectpositronic.com](http://www.connectpositronic.com)

DECIMAL TOL.	SCALE	DRAWN BY
± 0.015 [0.38]	N.T.S.	ME
ANGULAR TOL.	TITLE	APPROVED BY
± 5°	D SERIES	COLF

DATE	DRAWING NUMBER	REV.
11-2-11	D37000ANE0/AA	A
	SK12936	