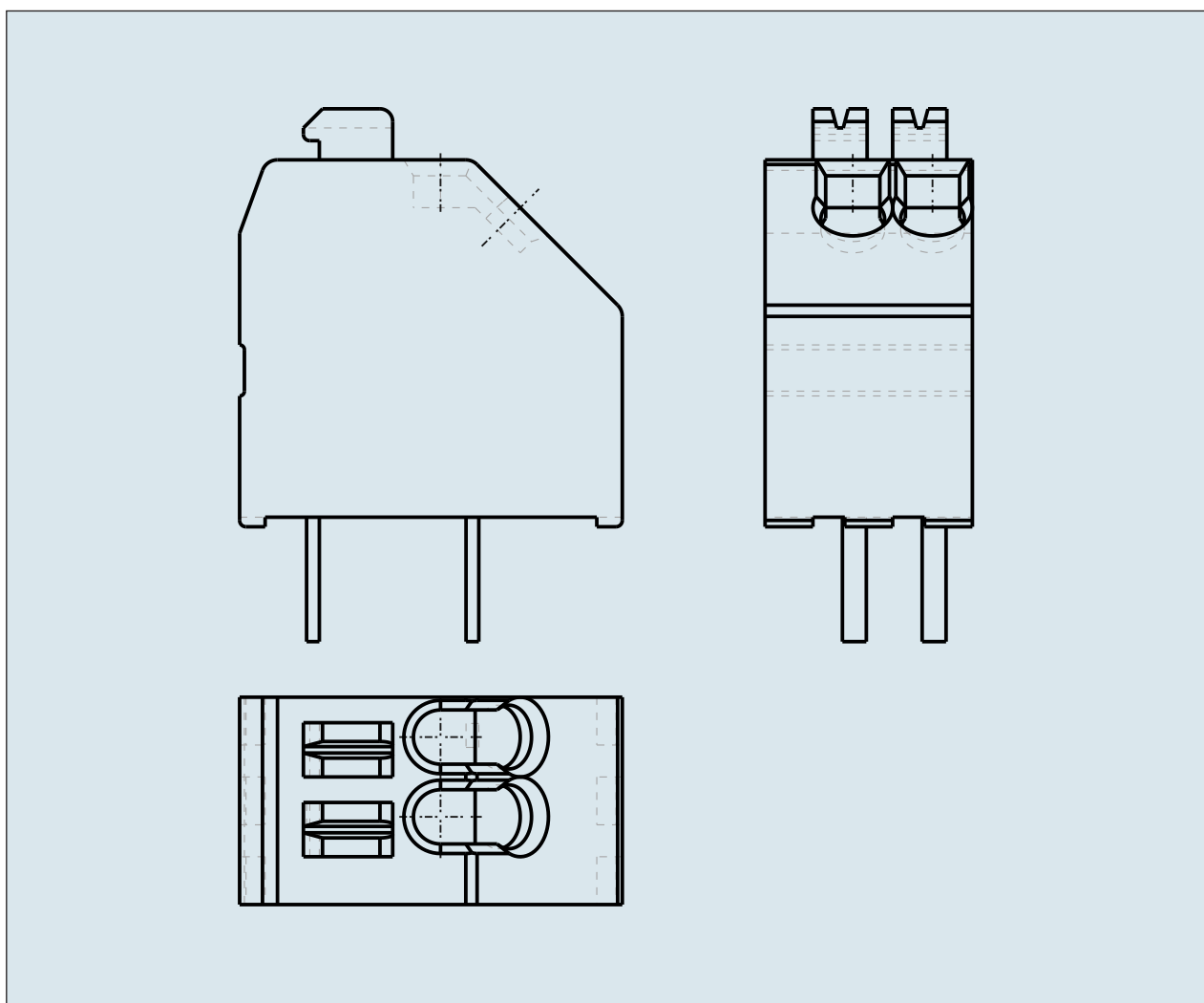
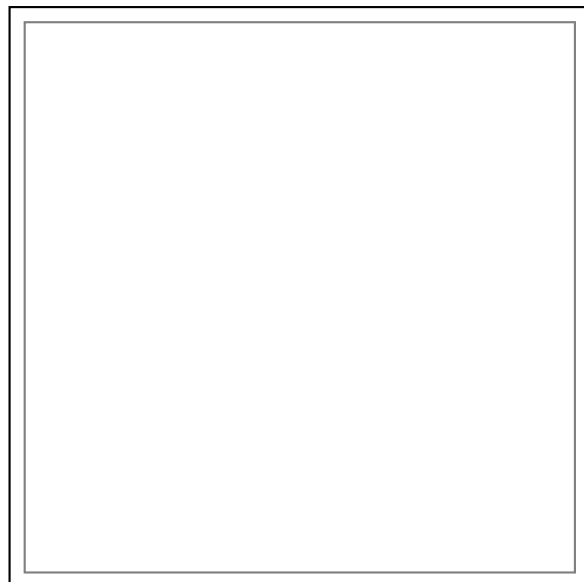
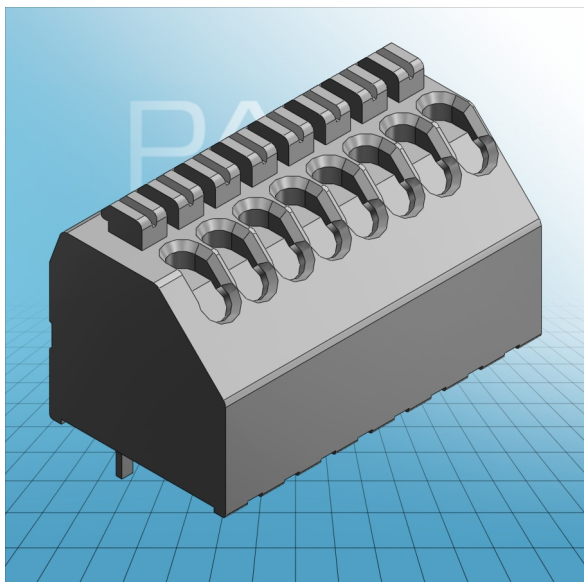


**1-CONDUCTOR PCB TERMINAL
STRIP 1 SOLDER PIN / POLE
STAGGERED PIN SPACING 2.5 MM / 0.
098 IN WITH PUSH BUTTONS**



**1-CONDUCTOR PCB TERMINAL
STRIP 1 SOLDER PIN / POLE
STAGGERED PIN SPACING 2.5 MM / 0.
098 IN WITH PUSH BOTTONS
250-402 TO 250-424**

ITEM-NO. (ITEM-NO.)	250-408
DIAMETER1 (Cross section / mm ²)	0.2 - 0.5
DIAMETER2 (Cross section / AWG)	24 - 20
Strip length (Strip length / mm)	8.5 - 9.5
Measured voltage (Measured voltage / V)	160
Measured shock voltage (Measured shock voltage / kV)	2.5
Pollution degree (Pollution degree)	2
Current intensity (Current intensity / A)	4
RM (PIN SPACING / mm)	2.5
P (NO. OF POLES)	8
Height (Height / mm)	13.1
Width (Width / mm)	21.5
Depth (Depth / mm)	12
No. of connection Points (No. of connection Points)	8
No. of potentials (No. of potentials)	8
COLOR (COLOR)	grau
WEIGHT (WEIGHT / g)	2.96
Comment (Comment)	L = (No. of poles x Pin Spacing) + 1.5 mm
Dimensions (Dimensions)	1.1 -0.1 mm