



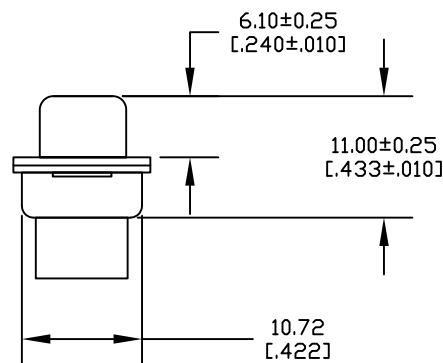
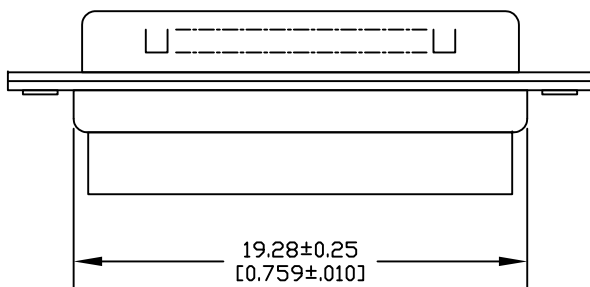
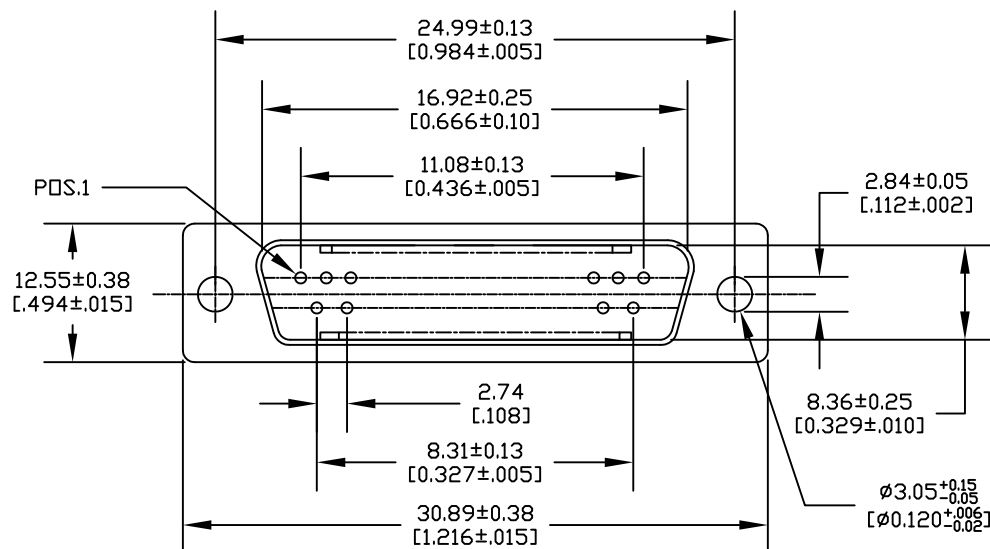
ALL RIGHTS RESERVED. NO PORTION OF THIS PUBLICATION, WHETHER IN WHOLE OR IN PART CAN BE REPRODUCED WITHOUT THE EXPRESS WRITTEN CONSENT OF SPC TECHNOLOGY.

SPC-F005.DWG

## REVISIONS

DOC. NO. SPC-F005 \* Effective: 7/8/02 \* DCP No: 1398

DCP #	REV	DESCRIPTION	DRAWN	DATE	CHECKD	DATE	APPRVD	DATE
2055	A	Released	JN	01/14/09	JWM	01/14/09	JWM	01/14/09



## Description:

- Current Rating: 3 Amp
- Insulation resistance: 5000M min. at 500 V DC (for 1 minute)
- Dielectric withstands Voltage: AC 1000V min.
- Operating temperature: -25°C to +85°C
- Contact type: Plug
- Contact resistance: 15mΩ max. mated
- Insulation material: PBT & Glass-fiber reinforced UL-94V-0
- Number of positions: 9
- Color Code: Black
- Metal Shell Finish: The front shell and back shell, both Tin plated, with grounding indents on the front shell
- Mounting type: Standard Hole

DISCLAIMER:  
ALL STATEMENTS AND TECHNICAL INFORMATION CONTAINED HEREIN ARE BASED UPON INFORMATION AND/OR TESTS WE BELIEVE TO BE ACCURATE AND RELIABLE. SINCE CONDITIONS OF USE ARE BEYOND OUR CONTROL, THE USER SHALL DETERMINE THE SUITABILITY OF THE PRODUCT FOR THE INTENDED USE AND ASSUME ALL RISK AND LIABILITY WHATSOEVER IN CONNECTION THEREWITH.

## TOLERANCES:

UNLESS OTHERWISE SPECIFIED, DIMENSIONS ARE FOR REFERENCE PURPOSES ONLY.

DRAWN BY:	DATE:
Jason Nash	01/14/09
CHECKED BY:	DATE:
JWM	01/14/09
APPROVED BY:	DATE:
JWM	01/14/09

## DRAWING TITLE:

D-SUB CRIMP MALE CONNECTOR

SIZE	DWG. NO.	ELECTRONIC FILE	REV
A	MC24555	01P1685.DWG	A
SCALE: NTS		U.O.M.: INCHES [mm]	SHEET: 1 OF 1