



Product Change Notification



Product Group: DIODES / January 19th, 2018 / PCN-DD-001-2018 Rev 0

Additional assembly site for TO-263AB (D²PAK), TO-262AA and TO-220 packages

DESCRIPTION OF CHANGE:

In order to meet increasing demand of Rectifiers, Vishay Diodes Division is introducing an additional assembly line at a new subcontractor in China for commercial TO-263AB (D²PAK), TO-262AA and TO-220 Part Numbers. The new subcontractor has received international quality system and environmental compliance certification ISO9001, ISO14001 and TS16949. Bill of Materials is shown in annex 2 while Package Outline Dimensions will be consolidated as illustrated in annex 3. D²PAK's Tape & Reel dimensions will remain conform to EIA-481C specification. Taking the chance of this capacity expansion, product nomenclature will be harmonized: Vishay Diodes Division will discontinue the Part Numbers with PBF suffix and keep active the Halogen free version only (-M3 suffix). Moreover Vishay Diodes Division will also release the AEC Q-101 qualified corresponding material on request, that will not be affected by this announcement.

CLASSIFICATION OF CHANGE: Assembly Site

REASON FOR CHANGE: Capacity expansion for improving delivery support

EXPECTED INFLUENCE ON QUALITY/RELIABILITY/PERFORMANCE: There will be no effect on quality, reliability or electrical performance.

PRODUCT CATEGORY: Diodes & Rectifiers

PART NUMBERS/SERIES/FAMILIES AFFECTED: Involved Part Numbers are listed as attachment.

VISHAY BRAND(s): Vishay Semiconductors

TIME SCHEDULE: Starting from March 19th, 2018 Vishay may start to ship from new location

SAMPLE AVAILABILITY: On customer request

PRODUCT IDENTIFICATION: Products manufactured at new location will be identified by the new plant digit of the data code marked on the 2nd line of the part.

QUALIFICATION DATA: See annex 1

This PCN is considered approved, without further notification, unless we receive specific customer written concerns before March 19th, 2018 or as specified by contract

ISSUED BY: FRED, HEXFRED, STANDARD
DIODES AND THYRISTORS

Alessandro Bonaudo, Vishay Diodes Product Marketing
e-mail: Alessandro.Bonaudo@vishay.com

SCHOTTKY DIODES

RS Chin, Vishay Diodes Product Marketing
e-mail: RS.Chin@vishay.com

For further information, please contact your regional Vishay office.

CONTACT INFORMATION:

The Americas

Vishay Semiconductors
150 Motor Parkway, Suite 101E
Hauppauge, NY11788 USA
Phone : 631 300 3816
Fax : 631 300 3843
Diodes-Americas@vishay.com

Europe

Vishay Semiconductors
Theresienstrasse 2
D-74072 Heilbronn, Germany
Phone: + 49 7131 67 3364 (3365)
Fax: + 49 7131 67 2938
Diodes-Europe@vishay.com

Asia

Vishay Semiconductors
15D, Sun Tong Infoport Plaza
55 Huai Hai West Road
Shanghai, Cina
Phone: + 86 138 1787 2112
Fax: + 86 21 5258 7979
Diodes-Asia@vishay.com

TO-263AB (D2PAK) & TO-262AA

Family	Halogen-free nomenclature		Old nomenclature (PBF)
	Part Number	Datasheet	Part Number
FRED	VS-15ETH03S-M3	96230	VS-15ETH03SPBF
FRED	VS-15ETH03STRL-M3	96230	VS-15ETH03STRLPBF
FRED	VS-15ETH03STRR-M3	96230	VS-15ETH03STRRPBF
FRED	VS-15ETH06S-M3	96301	VS-15ETH06SPBF
FRED	VS-15ETH06STRL-M3	96301	VS-15ETH06STRLPBF
FRED	VS-15ETH06STRR-M3	96301	VS-15ETH06STRRPBF
FRED	VS-15ETL06S-M3	96315	VS-15ETL06SPBF
FRED	VS-15ETL06STRL-M3	96315	VS-15ETL06STRLPBF
FRED	VS-15ETL06STRR-M3	96315	VS-15ETL06STRRPBF
FRED	VS-15ETX06S-M3	96302	VS-15ETX06SPBF
FRED	VS-15ETX06STRL-M3	96302	VS-15ETX06STRLPBF
FRED	VS-15ETX06STRR-M3	96302	VS-15ETX06STRRPBF
FRED	VS-16CTU04S-M3	96232	VS-16CTU04SPBF
FRED	VS-16CTU04STRL-M3	96232	VS-16CTU04STRLPBF
FRED	VS-16CTU04STRR-M3	96232	VS-16CTU04STRRPBF
FRED	VS-20CTH03S-M3	96386	VS-20CTH03SPBF
FRED	VS-20CTH03STRL-M3	96386	VS-20CTH03STRLPBF
FRED	VS-20CTH03STRR-M3	96386	VS-20CTH03STRRPBF
FRED	VS-30CTH02S-M3	96234	VS-30CTH02SPBF
FRED	VS-30CTH02STRL-M3	96234	VS-30CTH02STRLPBF
FRED	VS-30CTH02STRR-M3	96234	VS-30CTH02STRRPBF
FRED	VS-30ETH06S-M3	96236	VS-30ETH06SPBF
FRED	VS-30ETH06STRL-M3	96236	VS-30ETH06STRLPBF
FRED	VS-30ETH06STRR-M3	96236	VS-30ETH06STRRPBF
FRED	VS-8ETH03S-M3	96238	VS-8ETH03SPBF
FRED	VS-8ETH03STRL-M3	96238	VS-8ETH03STRLPBF
FRED	VS-8ETH03STRR-M3	96238	VS-8ETH03STRRPBF
FRED	VS-8ETH06S-M3	96387	VS-8ETH06SPBF
FRED	VS-8ETH06STRL-M3	96387	VS-8ETH06STRLPBF
FRED	VS-8ETH06STRR-M3	96387	VS-8ETH06STRRPBF
FRED	VS-8ETL06S-M3	96240	VS-8ETL06SPBF
FRED	VS-8ETL06STRL-M3	96240	VS-8ETL06STRLPBF
FRED	VS-8ETL06STRR-M3	96240	VS-8ETL06STRRPBF
FRED	VS-8ETU04S-M3	96388	VS-8ETU04SPBF
FRED	VS-8ETU04STRL-M3	96388	VS-8ETU04STRLPBF
FRED	VS-8ETU04STRR-M3	96388	VS-8ETU04STRRPBF
FRED	VS-8ETX06S-M3	96242	VS-8ETX06SPBF
FRED	VS-8ETX06STRL-M3	96242	VS-8ETX06STRLPBF
FRED	VS-8ETX06STRR-M3	96242	VS-8ETX06STRRPBF

TO-263AB (D2PAK) & TO-262AA			
Family	Halogen-free nomenclature		Old nomenclature (PBF)
	Part Number	Datasheet	Part Number
FRED	VS-MURB1020CT-M3	96389	VS-MURB1020CTPBF
FRED	VS-MURB1020CTL-M3	96389	VS-MURB1020CTTRLP
FRED	VS-MURB1020CTR-M3	96389	VS-MURB1020CTTRRP
FRED	VS-MURB1520-M3	96316	VS-MURB1520PBF
FRED	VS-MURB1520TRL-M3	96316	VS-MURB1520TRLPBF
FRED	VS-MURB1520TRR-M3	96316	VS-MURB1520TRRPBF
FRED	VS-MURB1620CT-M3	96390	VS-MURB1620CTPBF
FRED	VS-MURB1620CTL-M3	96390	VS-MURB1620CTTRLP
FRED	VS-MURB1620CTR-M3	96390	VS-MURB1620CTTRRP
FRED	VS-MURB2020CT-M3	96391	VS-MURB2020CTPBF
FRED	VS-MURB2020CTL-M3	96391	VS-MURB2020CTTRLP
FRED	VS-MURB2020CTR-M3	96391	VS-MURB2020CTTRRP
FRED	VS-MURB820-M3	96392	VS-MURB820PBF
FRED	VS-MURB820TRL-M3	96392	VS-MURB820TRLPBF
FRED	VS-MURB820TRR-M3	96392	VS-MURB820TRRPBF
FRED	VS-ETH1506S-M3	96331	
FRED	VS-ETH1506STRL-M3	96331	
FRED	VS-ETH1506STRR-M3	96331	
FRED	VS-ETH3006S-M3	96332	
FRED	VS-ETH3006STRL-M3	96332	
FRED	VS-ETH3006STRR-M3	96332	
FRED	VS-ETL1506S-M3	96333	
FRED	VS-ETL1506STRL-M3	96333	
FRED	VS-ETL1506STRR-M3	96333	
FRED	VS-ETU1506S-M3	96334	
FRED	VS-ETU1506STRL-M3	96334	
FRED	VS-ETU1506STRR-M3	96334	
FRED	VS-ETU3006S-M3	96340	
FRED	VS-ETU3006STRL-M3	96340	
FRED	VS-ETU3006STRR-M3	96340	
FRED	VS-ETX1506S-M3	96341	
FRED	VS-ETX1506STRL-M3	96341	
FRED	VS-ETX1506STRR-M3	96341	
FRED	VS-ETH1506-1-M3	96331	
FRED	VS-ETH3006-1-M3	96332	
FRED	VS-ETL1506-1-M3	96333	
FRED	VS-ETU1506-1-M3	96334	
FRED	VS-ETU3006-1-M3	96340	
FRED	VS-ETX1506-1-M3	96341	

TO-263AB (D2PAK) & TO-262AA			
Family	Halogen-free nomenclature		Old nomenclature (PBF)
	Part Number	Datasheet	Part Number
FRED	VS-15ETH03-1-M3	96230	VS-15ETH03-1PBF
FRED	VS-15ETH06-1-M3	96301	VS-15ETH06-1PBF
FRED	VS-15ETL06-1-M3	96315	VS-15ETL06-1PBF
FRED	VS-15ETX06-1-M3	96302	VS-15ETX06-1PBF
FRED	VS-16CTU04-1-M3	96232	VS-16CTU04-1PBF
FRED	VS-20CTH03-1-M3	96386	VS-20CTH03-1PBF
FRED	VS-30CTH02-1-M3	96234	VS-30CTH02-1PBF
FRED	VS-30ETH06-1-M3	96236	VS-30ETH06-1PBF
FRED	VS-8ETH03-1-M3	96238	VS-8ETH03-1PBF
FRED	VS-8ETH06-1-M3	96387	VS-8ETH06-1PBF
FRED	VS-8ETL06-1-M3	96240	VS-8ETL06-1PBF
FRED	VS-8ETU04-1-M3	96388	VS-8ETU04-1PBF
FRED	VS-8ETX06-1-M3	96242	VS-8ETX06-1PBF
FRED	VS-MURB1020CT-1-M3	96389	VS-MURB1020CT-1PBF
FRED	VS-MURB1520-1-M3	96316	VS-MURB1520-1PBF
FRED	VS-MURB1620CT-1-M3	96390	VS-MURB1620CT-1PBF
FRED	VS-MURB2020CT-1-M3	96391	VS-MURB2020CT-1PBF
FRED	VS-MURB820-1-M3	96392	VS-MURB820-1PBF
HEXFRED	VS-HFA04TB60S-M3	96215	VS-HFA04TB60SPBF
HEXFRED	VS-HFA04TB60SL-M3	96215	VS-HFA04TB60STRLP
HEXFRED	VS-HFA04TB60SR-M3	96215	VS-HFA04TB60STRRP
HEXFRED	VS-HFA06TB120S-M3	96216	VS-HFA06TB120SPBF
HEXFRED	VS-HFA06TB120SL-M3	96216	VS-HFA06TB120STRLP
HEXFRED	VS-HFA06TB120SR-M3	96216	VS-HFA06TB120STRRP
HEXFRED	VS-HFA08TA60CS-M3	96217	VS-HFA08TA60CSPBF
HEXFRED	VS-HFA08TA60CSL-M3	96217	VS-HFA08TA60CSTRLP
HEXFRED	VS-HFA08TA60CSR-M3	96217	VS-HFA08TA60CSTRRP
HEXFRED	VS-HFA08TB120S-M3	96218	VS-HFA08TB120SPBF
HEXFRED	VS-HFA08TB120SL-M3	96218	VS-HFA08TB120STRLP
HEXFRED	VS-HFA08TB120SR-M3	96218	VS-HFA08TB120STRRP
HEXFRED	VS-HFA08TB60S-M3	96219	VS-HFA08TB60SPBF
HEXFRED	VS-HFA08TB60SL-M3	96219	VS-HFA08TB60STRLP
HEXFRED	VS-HFA08TB60SR-M3	96219	VS-HFA08TB60STRRP
HEXFRED	VS-HFA15TB60S-M3	96313	VS-HFA15TB60SPBF
HEXFRED	VS-HFA15TB60SL-M3	96313	VS-HFA15TB60STRLP
HEXFRED	VS-HFA15TB60SR-M3	96313	VS-HFA15TB60STRRP
HEXFRED	VS-HFA16TA60CS-M3	96220	VS-HFA16TA60CSPBF
HEXFRED	VS-HFA16TA60CSL-M3	96220	VS-HFA16TA60CSTRLP
HEXFRED	VS-HFA16TA60CSR-M3	96220	VS-HFA16TA60CSTRRP

TO-263AB (D2PAK) & TO-262AA			
Family	Halogen-free nomenclature		Old nomenclature (PBF)
	Part Number	Datasheet	Part Number
HEXFRED	VS-HFA16TB120S-M3	96312	VS-HFA16TB120SPBF
HEXFRED	VS-HFA16TB120SL-M3	96312	VS-HFA16TB120STRLP
HEXFRED	VS-HFA16TB120SR-M3	96312	VS-HFA16TB120STRRP
HEXFRED	VS-HFA25TB60S-M3	96311	VS-HFA25TB60SPBF
HEXFRED	VS-HFA25TB60SL-M3	96311	VS-HFA25TB60STRLP
HEXFRED	VS-HFA25TB60SR-M3	96311	VS-HFA25TB60STRRP
HEXFRED	VS-HFA30TA60CS-M3	96420	VS-HFA30TA60CSPBF
HEXFRED	VS-HFA30TA60CSL-M3	96420	VS-HFA30TA60CSTRLP
HEXFRED	VS-HFA30TA60CSR-M3	96420	VS-HFA30TA60CSTRRP
HEXFRED	VS-HFA15TB60-1-M3	96313	VS-HFA15TB60-1PBF
STANDARD DIODES	VS-10ETF02S-M3	94884	VS-10ETF02SPBF
STANDARD DIODES	VS-10ETF02STRL-M3	94884	VS-10ETF02STRLPBF
STANDARD DIODES	VS-10ETF02STRR-M3	94884	VS-10ETF02STRRPBF
STANDARD DIODES	VS-10ETF04S-M3	94884	VS-10ETF04SPBF
STANDARD DIODES	VS-10ETF04STRL-M3	94884	VS-10ETF04STRLPBF
STANDARD DIODES	VS-10ETF04STRR-M3	94884	VS-10ETF04STRRPBF
STANDARD DIODES	VS-10ETF06S-M3	94884	VS-10ETF06SPBF
STANDARD DIODES	VS-10ETF06STRL-M3	94884	VS-10ETF06STRLPBF
STANDARD DIODES	VS-10ETF06STRR-M3	94884	VS-10ETF06STRRPBF
STANDARD DIODES	VS-10ETF10S-M3	94885	VS-10ETF10SPBF
STANDARD DIODES	VS-10ETF10STRL-M3	94885	VS-10ETF10STRLPBF
STANDARD DIODES	VS-10ETF10STRR-M3	94885	VS-10ETF10STRRPBF
STANDARD DIODES	VS-10ETF12S-M3	94885	VS-10ETF12SPBF
STANDARD DIODES	VS-10ETF12STRL-M3	94885	VS-10ETF12STRLPBF
STANDARD DIODES	VS-10ETF12STRR-M3	94885	VS-10ETF12STRRPBF
STANDARD DIODES	VS-10ETS08S-M3	94888	VS-10ETS08SPBF
STANDARD DIODES	VS-10ETS08STRL-M3	94888	VS-10ETS08STRLPBF
STANDARD DIODES	VS-10ETS08STRR-M3	94888	VS-10ETS08STRRPBF
STANDARD DIODES	VS-10ETS10S-M3	94888	VS-10ETS10SPBF
STANDARD DIODES	VS-10ETS10STRL-M3	94888	VS-10ETS10STRLPBF
STANDARD DIODES	VS-10ETS10STRR-M3	94888	VS-10ETS10STRRPBF
STANDARD DIODES	VS-10ETS12S-M3	94888	VS-10ETS12SPBF
STANDARD DIODES	VS-10ETS12STRL-M3	94888	VS-10ETS12STRLPBF
STANDARD DIODES	VS-10ETS12STRR-M3	94888	VS-10ETS12STRRPBF
STANDARD DIODES	VS-20ETF02S-M3	94886	VS-20ETF02SPBF
STANDARD DIODES	VS-20ETF02STRL-M3	94886	VS-20ETF02STRLPBF
STANDARD DIODES	VS-20ETF02STRR-M3	94886	VS-20ETF02STRRPBF
STANDARD DIODES	VS-20ETF04S-M3	94886	VS-20ETF04SPBF
STANDARD DIODES	VS-20ETF04STRL-M3	94886	VS-20ETF04STRLPBF

TO-263AB (D2PAK) & TO-262AA			
Family	Halogen-free nomenclature		Old nomenclature (PBF)
	Part Number	Datasheet	Part Number
STANDARD DIODES	VS-20ETF04STRR-M3	94886	VS-20ETF04STRRPBF
STANDARD DIODES	VS-20ETF06S-M3	94886	VS-20ETF06SPBF
STANDARD DIODES	VS-20ETF06STRL-M3	94886	VS-20ETF06STRLPBF
STANDARD DIODES	VS-20ETF06STRR-M3	94886	VS-20ETF06STRRPBF
STANDARD DIODES	VS-20ETF08S-M3	94887	VS-20ETF08SPBF
STANDARD DIODES	VS-20ETF08STRL-M3	94887	VS-20ETF08STRLPBF
STANDARD DIODES	VS-20ETF08STRR-M3	94887	VS-20ETF08STRRPBF
STANDARD DIODES	VS-20ETF10S-M3	94887	VS-20ETF10SPBF
STANDARD DIODES	VS-20ETF10STRL-M3	94887	VS-20ETF10STRLPBF
STANDARD DIODES	VS-20ETF10STRR-M3	94887	VS-20ETF10STRRPBF
STANDARD DIODES	VS-20ETF12S-M3	94887	VS-20ETF12SPBF
STANDARD DIODES	VS-20ETF12STRL-M3	94887	VS-20ETF12STRLPBF
STANDARD DIODES	VS-20ETF12STRR-M3	94887	VS-20ETF12STRRPBF
STANDARD DIODES	VS-20ETS08S-M3	94889	VS-20ETS08SPBF
STANDARD DIODES	VS-20ETS08STRL-M3	94889	VS-20ETS08STRLPBF
STANDARD DIODES	VS-20ETS08STRR-M3	94889	VS-20ETS08STRRPBF
STANDARD DIODES	VS-20ETS12S-M3	94889	VS-20ETS12SPBF
STANDARD DIODES	VS-20ETS12STRL-M3	94889	VS-20ETS12STRLPBF
STANDARD DIODES	VS-20ETS12STRR-M3	94889	VS-20ETS12STRRPBF
STANDARD DIODES	VS-25ETS08S-M3	94890	VS-25ETS08SPBF
STANDARD DIODES	VS-25ETS08STRL-M3	94890	VS-25ETS08STRLPBF
STANDARD DIODES	VS-25ETS08STRR-M3	94890	VS-25ETS08STRRPBF
STANDARD DIODES	VS-25ETS10S-M3	94890	VS-25ETS10SPBF
STANDARD DIODES	VS-25ETS10STRL-M3	94890	VS-25ETS10STRLPBF
STANDARD DIODES	VS-25ETS10STRR-M3	94890	VS-25ETS10STRRPBF
STANDARD DIODES	VS-25ETS12S-M3	94890	VS-25ETS12SPBF
STANDARD DIODES	VS-25ETS12STRL-M3	94890	VS-25ETS12STRLPBF
STANDARD DIODES	VS-25ETS12STRR-M3	94890	VS-25ETS12STRRPBF
THYRISTORS	VS-10TTS08S-M3	96410	VS-10TTS08SPBF
THYRISTORS	VS-10TTS08STRL-M3	96410	VS-10TTS08STRLPBF
THYRISTORS	VS-10TTS08STRR-M3	96410	VS-10TTS08STRRPBF
THYRISTORS	VS-12TTS08S-M3	96411	VS-12TTS08SPBF
THYRISTORS	VS-12TTS08STRL-M3	96411	VS-12TTS08STRLPBF
THYRISTORS	VS-12TTS08STRR-M3	96411	VS-12TTS08STRRPBF
THYRISTORS	VS-16TTS08S-M3	96412	VS-16TTS08SPBF
THYRISTORS	VS-16TTS08STRL-M3	96412	VS-16TTS08STRLPBF
THYRISTORS	VS-16TTS08STRR-M3	96412	VS-16TTS08STRRPBF
THYRISTORS	VS-16TTS12S-M3	96412	VS-16TTS12SPBF
THYRISTORS	VS-16TTS12STRL-M3	96412	VS-16TTS12STRLPBF

TO-263AB (D2PAK) & TO-262AA			
Family	Halogen-free nomenclature		Old nomenclature (PBF)
	Part Number	Datasheet	Part Number
THYRISTORS	VS-16TTS12STRR-M3	96412	VS-16TTS12STRRPBF
THYRISTORS	VS-16TTS16S-M3	96413	VS-16TTS16SPBF
THYRISTORS	VS-16TTS16STRL-M3	96413	VS-16TTS16STRLPBF
THYRISTORS	VS-16TTS16STRR-M3	96413	VS-16TTS16STRRPBF
THYRISTORS	VS-25TTS08S-M3	96414	VS-25TTS08SPBF
THYRISTORS	VS-25TTS08STRL-M3	96414	VS-25TTS08STRLPBF
THYRISTORS	VS-25TTS08STRR-M3	96414	VS-25TTS08STRRPBF
THYRISTORS	VS-25TTS12S-M3	96414	VS-25TTS12SPBF
THYRISTORS	VS-25TTS12STRL-M3	96414	VS-25TTS12STRLPBF
THYRISTORS	VS-25TTS12STRR-M3	96414	VS-25TTS12STRRPBF
THYRISTORS	VS-25TTS16S-M3	96415	VS-25TTS16SPBF
THYRISTORS	VS-25TTS16STRL-M3	96415	VS-25TTS16STRLPBF
THYRISTORS	VS-25TTS16STRR-M3	96415	VS-25TTS16STRRPBF
THYRISTORS	VS-16TTS16STRL-M3	96413	VS-80-1326PBF
SCHOTTKY DIODES	VS-10CTQ150S-M3	95729	VS-10CTQ150SPBF
SCHOTTKY DIODES	VS-10CTQ150STRL-M3	95729	VS-10CTQ150STRLPBF
SCHOTTKY DIODES	VS-10CTQ150STRR-M3	95729	VS-10CTQ150STRRPBF
SCHOTTKY DIODES	VS-10TQ035S-M3	94923	VS-10TQ035SPBF
SCHOTTKY DIODES	VS-10TQ035STRL-M3	94923	VS-10TQ035STRLPBF
SCHOTTKY DIODES	VS-10TQ035STRR-M3	94923	VS-10TQ035STRRPBF
SCHOTTKY DIODES	VS-10TQ045S-M3	94923	VS-10TQ045SPBF
SCHOTTKY DIODES	VS-10TQ045STRL-M3	94923	VS-10TQ045STRLPBF
SCHOTTKY DIODES	VS-10TQ045STRR-M3	94923	VS-10TQ045STRRPBF
SCHOTTKY DIODES	VS-12CTQ035S-M3	94924	VS-12CTQ035SPBF
SCHOTTKY DIODES	VS-12CTQ035STRL-M3	94924	VS-12CTQ035STRLPBF
SCHOTTKY DIODES	VS-12CTQ035STRR-M3	94924	VS-12CTQ035STRRPBF
SCHOTTKY DIODES	VS-12CTQ045S-M3	94924	VS-12CTQ045SPBF
SCHOTTKY DIODES	VS-12CTQ045STRL-M3	94924	VS-12CTQ045STRLPBF
SCHOTTKY DIODES	VS-12CTQ045STRR-M3	94924	VS-12CTQ045STRRPBF
SCHOTTKY DIODES	VS-12TQ035S-M3	94925	VS-12TQ035SPBF
SCHOTTKY DIODES	VS-12TQ035STRL-M3	94925	VS-12TQ035STRLPBF
SCHOTTKY DIODES	VS-12TQ035STRR-M3	94925	VS-12TQ035STRRPBF
SCHOTTKY DIODES	VS-12TQ040S-M3	94925	VS-12TQ040SPBF
SCHOTTKY DIODES	VS-12TQ040STRL-M3	94925	VS-12TQ040STRLPBF
SCHOTTKY DIODES	VS-12TQ040STRR-M3	94925	VS-12TQ040STRRPBF
SCHOTTKY DIODES	VS-12TQ045S-M3	94925	VS-12TQ045SPBF
SCHOTTKY DIODES	VS-12TQ045STRL-M3	94925	VS-12TQ045STRLPBF
SCHOTTKY DIODES	VS-12TQ045STRR-M3	94925	VS-12TQ045STRRPBF
SCHOTTKY DIODES	VS-15CTQ035S-M3	94926	VS-15CTQ035SPBF

TO-263AB (D2PAK) & TO-262AA			
Family	Halogen-free nomenclature		Old nomenclature (PBF)
	Part Number	Datasheet	Part Number
SCHOTTKY DIODES	VS-15CTQ035STRL-M3	94926	VS-15CTQ035STRLPBF
SCHOTTKY DIODES	VS-15CTQ035STRR-M3	94926	VS-15CTQ035STRRPBF
SCHOTTKY DIODES	VS-15CTQ045S-M3	94926	VS-15CTQ045SPBF
SCHOTTKY DIODES	VS-15CTQ045STRL-M3	94926	VS-15CTQ045STRLPBF
SCHOTTKY DIODES	VS-15CTQ045STRR-M3	94926	VS-15CTQ045STRRPBF
SCHOTTKY DIODES	VS-15TQ060S-M3	94927	VS-15TQ060SPBF
SCHOTTKY DIODES	VS-15TQ060STRL-M3	94927	VS-15TQ060STRLPBF
SCHOTTKY DIODES	VS-15TQ060STRR-M3	94927	VS-15TQ060STRRPBF
SCHOTTKY DIODES	VS-16CTQ060S-M3	94929	VS-16CTQ060SPBF
SCHOTTKY DIODES	VS-16CTQ060STRL-M3	94929	VS-16CTQ060STRLPBF
SCHOTTKY DIODES	VS-16CTQ060STRR-M3	94929	VS-16CTQ060STRRPBF
SCHOTTKY DIODES	VS-16CTQ080S-M3	94929	VS-16CTQ080SPBF
SCHOTTKY DIODES	VS-16CTQ080STRL-M3	94929	VS-16CTQ080STRLPBF
SCHOTTKY DIODES	VS-16CTQ080STRR-M3	94929	VS-16CTQ080STRRPBF
SCHOTTKY DIODES	VS-16CTQ100S-M3	94929	VS-16CTQ100SPBF
SCHOTTKY DIODES	VS-16CTQ100STRL-M3	94929	VS-16CTQ100STRLPBF
SCHOTTKY DIODES	VS-16CTQ100STRR-M3	94929	VS-16CTQ100STRRPBF
SCHOTTKY DIODES	VS-18TQ035S-M3	94928	VS-18TQ035SPBF
SCHOTTKY DIODES	VS-18TQ035STRL-M3	94928	VS-18TQ035STRLPBF
SCHOTTKY DIODES	VS-18TQ035STRR-M3	94928	VS-18TQ035STRRPBF
SCHOTTKY DIODES	VS-18TQ045S-M3	94928	VS-18TQ045SPBF
SCHOTTKY DIODES	VS-18TQ045STRL-M3	94928	VS-18TQ045STRLPBF
SCHOTTKY DIODES	VS-18TQ045STRR-M3	94928	VS-18TQ045STRRPBF
SCHOTTKY DIODES	VS-19TQ015S-M3	95730	VS-19TQ015SPBF
SCHOTTKY DIODES	VS-19TQ015STRL-M3	95730	VS-19TQ015STRLPBF
SCHOTTKY DIODES	VS-19TQ015STRR-M3	95730	VS-19TQ015STRRPBF
SCHOTTKY DIODES	VS-20CTQ035S-M3	94932	VS-20CTQ035SPBF
SCHOTTKY DIODES	VS-20CTQ035STRL-M3	94932	VS-20CTQ035STRLPBF
SCHOTTKY DIODES	VS-20CTQ035STRR-M3	94932	VS-20CTQ035STRRPBF
SCHOTTKY DIODES	VS-20CTQ040S-M3	94932	VS-20CTQ040SPBF
SCHOTTKY DIODES	VS-20CTQ040STRL-M3	94932	VS-20CTQ040STRLPBF
SCHOTTKY DIODES	VS-20CTQ040STRR-M3	94932	VS-20CTQ040STRRPBF
SCHOTTKY DIODES	VS-20CTQ045S-M3	94932	VS-20CTQ045SPBF
SCHOTTKY DIODES	VS-20CTQ045STRL-M3	94932	VS-20CTQ045STRLPBF
SCHOTTKY DIODES	VS-20CTQ045STRR-M3	94932	VS-20CTQ045STRRPBF
SCHOTTKY DIODES	VS-20CTQ150S-M3	94932	VS-20CTQ150SPBF
SCHOTTKY DIODES	VS-20CTQ150STRL-M3	94932	VS-20CTQ150STRLPBF
SCHOTTKY DIODES	VS-20CTQ150STRR-M3	94932	VS-20CTQ150STRRPBF
SCHOTTKY DIODES	VS-20L15TS-M3	95734	VS-20L15TSPBF

TO-263AB (D2PAK) & TO-262AA

Family	Halogen-free nomenclature		Old nomenclature (PBF)
	Part Number	Datasheet	Part Number
SCHOTTKY DIODES	VS-20L15TSTRL-M3	95734	VS-20L15TSTRLPBF
SCHOTTKY DIODES	VS-20L15TSTRR-M3	95734	VS-20L15TSTRRPBF
SCHOTTKY DIODES	VS-20TQ035S-M3	94931	VS-20TQ035SPBF
SCHOTTKY DIODES	VS-20TQ035STRL-M3	94931	VS-20TQ035STRLPBF
SCHOTTKY DIODES	VS-20TQ035STRR-M3	94931	VS-20TQ035STRRPBF
SCHOTTKY DIODES	VS-20TQ040S-M3	94931	VS-20TQ040SPBF
SCHOTTKY DIODES	VS-20TQ040STRL-M3	94931	VS-20TQ040STRLPBF
SCHOTTKY DIODES	VS-20TQ040STRR-M3	94931	VS-20TQ040STRRPBF
SCHOTTKY DIODES	VS-20TQ045S-M3	94931	VS-20TQ045SPBF
SCHOTTKY DIODES	VS-20TQ045STRL-M3	94931	VS-20TQ045STRLPBF
SCHOTTKY DIODES	VS-20TQ045STRR-M3	94931	VS-20TQ045STRRPBF
SCHOTTKY DIODES	VS-25CTQ035S-M3	94930	VS-25CTQ035SPBF
SCHOTTKY DIODES	VS-25CTQ035STRL-M3	94930	VS-25CTQ035STRLPBF
SCHOTTKY DIODES	VS-25CTQ035STRR-M3	94930	VS-25CTQ035STRRPBF
SCHOTTKY DIODES	VS-25CTQ040S-M3	94930	VS-25CTQ040SPBF
SCHOTTKY DIODES	VS-25CTQ040STRL-M3	94930	VS-25CTQ040STRLPBF
SCHOTTKY DIODES	VS-25CTQ040STRR-M3	94930	VS-25CTQ040STRRPBF
SCHOTTKY DIODES	VS-25CTQ045S-M3	94930	VS-25CTQ045SPBF
SCHOTTKY DIODES	VS-25CTQ045STRL-M3	94930	VS-25CTQ045STRLPBF
SCHOTTKY DIODES	VS-25CTQ045STRR-M3	94930	VS-25CTQ045STRRPBF
SCHOTTKY DIODES	VS-30CTQ035S-M3	94933	VS-30CTQ035SPBF
SCHOTTKY DIODES	VS-30CTQ035STRL-M3	94933	VS-30CTQ035STRLPBF
SCHOTTKY DIODES	VS-30CTQ035STRR-M3	94933	VS-30CTQ035STRRPBF
SCHOTTKY DIODES	VS-30CTQ045S-M3	94933	VS-30CTQ045SPBF
SCHOTTKY DIODES	VS-30CTQ045STRL-M3	94933	VS-30CTQ045STRLPBF
SCHOTTKY DIODES	VS-30CTQ045STRR-M3	94933	VS-30CTQ045STRRPBF
SCHOTTKY DIODES	VS-30CTQ060S-M3	94934	VS-30CTQ060SPBF
SCHOTTKY DIODES	VS-30CTQ060STRL-M3	94934	VS-30CTQ060STRLPBF
SCHOTTKY DIODES	VS-30CTQ060STRR-M3	94934	VS-30CTQ060STRRPBF
SCHOTTKY DIODES	VS-30CTQ080S-M3	94938	VS-30CTQ080SPBF
SCHOTTKY DIODES	VS-30CTQ080STRL-M3	94938	VS-30CTQ080STRLPBF
SCHOTTKY DIODES	VS-30CTQ080STRR-M3	94938	VS-30CTQ080STRRPBF
SCHOTTKY DIODES	VS-30CTQ100S-M3	94938	VS-30CTQ100SPBF
SCHOTTKY DIODES	VS-30CTQ100STRL-M3	94938	VS-30CTQ100STRLPBF
SCHOTTKY DIODES	VS-30CTQ100STRR-M3	94938	VS-30CTQ100STRRPBF
SCHOTTKY DIODES	VS-32CTQ025S-M3	94936	
SCHOTTKY DIODES	VS-32CTQ025STRL-M3	94936	
SCHOTTKY DIODES	VS-32CTQ025STRR-M3	94936	
SCHOTTKY DIODES	VS-32CTQ030S-M3	94936	VS-32CTQ030SPBF

TO-263AB (D2PAK) & TO-262AA			
Family	Halogen-free nomenclature		Old nomenclature (PBF)
	Part Number	Datasheet	Part Number
SCHOTTKY DIODES	VS-32CTQ030STRL-M3	94936	VS-32CTQ030STRLPBF
SCHOTTKY DIODES	VS-32CTQ030STRR-M3	94936	VS-32CTQ030STRRPBF
SCHOTTKY DIODES	VS-40CTQ045S-M3	94935	VS-40CTQ045SPBF
SCHOTTKY DIODES	VS-40CTQ045STRL-M3	94935	VS-40CTQ045STRLPBF
SCHOTTKY DIODES	VS-40CTQ045STRR-M3	94935	VS-40CTQ045STRRPBF
SCHOTTKY DIODES	VS-40CTQ150S-M3	95732	VS-40CTQ150SPBF
SCHOTTKY DIODES	VS-40CTQ150STRL-M3	95732	VS-40CTQ150STRLPBF
SCHOTTKY DIODES	VS-40CTQ150STRR-M3	95732	VS-40CTQ150STRRPBF
SCHOTTKY DIODES	VS-40L15CTS-M3	95733	VS-40L15CTSPBF
SCHOTTKY DIODES	VS-40L15CTSTRL-M3	95733	VS-40L15CTSTRLPBF
SCHOTTKY DIODES	VS-40L15CTSTRR-M3	95733	VS-40L15CTSTRRPBF
SCHOTTKY DIODES	VS-42CTQ030S-M3	94940	VS-42CTQ030SPBF
SCHOTTKY DIODES	VS-42CTQ030STRL-M3	94940	VS-42CTQ030STRLPBF
SCHOTTKY DIODES	VS-42CTQ030STRR-M3	94940	VS-42CTQ030STRRPBF
SCHOTTKY DIODES	VS-43CTQ100S-M3	94942	VS-43CTQ100SPBF
SCHOTTKY DIODES	VS-43CTQ100STRL-M3	94942	VS-43CTQ100STRLPBF
SCHOTTKY DIODES	VS-43CTQ100STRR-M3	94942	VS-43CTQ100STRRPBF
SCHOTTKY DIODES	VS-47CTQ020S-M3	94943	VS-47CTQ020SPBF
SCHOTTKY DIODES	VS-47CTQ020STRL-M3	94943	VS-47CTQ020STRLPBF
SCHOTTKY DIODES	VS-47CTQ020STRR-M3	94943	VS-47CTQ020STRRPBF
SCHOTTKY DIODES	VS-48CTQ060S-M3	94944	VS-48CTQ060SPBF
SCHOTTKY DIODES	VS-48CTQ060STRL-M3	94944	VS-48CTQ060STRLPBF
SCHOTTKY DIODES	VS-48CTQ060STRR-M3	94944	VS-48CTQ060STRRPBF
SCHOTTKY DIODES	VS-6TQ035S-M3	94945	VS-6TQ035SPBF
SCHOTTKY DIODES	VS-6TQ035STRL-M3	94945	VS-6TQ035STRLPBF
SCHOTTKY DIODES	VS-6TQ035STRR-M3	94945	VS-6TQ035STRRPBF
SCHOTTKY DIODES	VS-6TQ040S-M3	94945	VS-6TQ040SPBF
SCHOTTKY DIODES	VS-6TQ040STRL-M3	94945	VS-6TQ040STRLPBF
SCHOTTKY DIODES	VS-6TQ040STRR-M3	94945	VS-6TQ040STRRPBF
SCHOTTKY DIODES	VS-6TQ045S-M3	94945	VS-6TQ045SPBF
SCHOTTKY DIODES	VS-6TQ045STRL-M3	94945	VS-6TQ045STRLPBF
SCHOTTKY DIODES	VS-6TQ045STRR-M3	94945	VS-6TQ045STRRPBF
SCHOTTKY DIODES	VS-8TQ080S-M3	94946	VS-8TQ080SPBF
SCHOTTKY DIODES	VS-8TQ080STRL-M3	94946	VS-8TQ080STRLPBF
SCHOTTKY DIODES	VS-8TQ080STRR-M3	94946	VS-8TQ080STRRPBF
SCHOTTKY DIODES	VS-8TQ100S-M3	94946	VS-8TQ100SPBF
SCHOTTKY DIODES	VS-8TQ100STRL-M3	94946	VS-8TQ100STRLPBF
SCHOTTKY DIODES	VS-8TQ100STRR-M3	94946	VS-8TQ100STRRPBF
SCHOTTKY DIODES	VS-16CTQ100STRL-M3	94929	VS-95-0294PBF

TO-263AB (D2PAK) & TO-262AA

Family	Halogen-free nomenclature		Old nomenclature (PBF)
	Part Number	Datasheet	Part Number
SCHOTTKY DIODES	VS-MBRB1035-M3	96393	VS-MBRB1035PBF
SCHOTTKY DIODES	VS-MBRB1035TRL-M3	96393	VS-MBRB1035TRLPBF
SCHOTTKY DIODES	VS-MBRB1035TRR-M3	96393	VS-MBRB1035TRRPBF
SCHOTTKY DIODES	VS-MBRB1045-M3	96393	VS-MBRB1045PBF
SCHOTTKY DIODES	VS-MBRB1045TRL-M3	96393	VS-MBRB1045TRLPBF
SCHOTTKY DIODES	VS-MBRB1045TRR-M3	96393	VS-MBRB1045TRRPBF
SCHOTTKY DIODES	VS-MBRB1535CT-M3	96403	VS-MBRB1535CTPBF
SCHOTTKY DIODES	VS-MBRB1535CTL-M3	96403	VS-MBRB1535CTTRLP
SCHOTTKY DIODES	VS-MBRB1535CTR-M3	96403	VS-MBRB1535CTTRRP
SCHOTTKY DIODES	VS-MBRB1545CT-M3	96403	VS-MBRB1545CTPBF
SCHOTTKY DIODES	VS-MBRB1545CTL-M3	96403	VS-MBRB1545CTTRLP
SCHOTTKY DIODES	VS-MBRB1545CTR-M3	96403	VS-MBRB1545CTTRRP
SCHOTTKY DIODES	VS-MBRB1635-M3	96394	VS-MBRB1635PBF
SCHOTTKY DIODES	VS-MBRB1635TRL-M3	96394	VS-MBRB1635TRLPBF
SCHOTTKY DIODES	VS-MBRB1635TRR-M3	96394	VS-MBRB1635TRRPBF
SCHOTTKY DIODES	VS-MBRB1645-M3	96394	VS-MBRB1645PBF
SCHOTTKY DIODES	VS-MBRB1645TRL-M3	96394	VS-MBRB1645TRLPBF
SCHOTTKY DIODES	VS-MBRB1645TRR-M3	96394	VS-MBRB1645TRRPBF
SCHOTTKY DIODES	VS-MBRB20100CT-M3	96404	VS-MBRB20100CTPBF
SCHOTTKY DIODES	VS-MBRB20100CTL-M3	96404	VS-MBRB20100CTTRLP
SCHOTTKY DIODES	VS-MBRB20100CTR-M3	96404	VS-MBRB20100CTTRRP
SCHOTTKY DIODES	VS-MBRB2035CT-M3	96405	VS-MBRB2035CTPBF
SCHOTTKY DIODES	VS-MBRB2045CT-M3	96405	VS-MBRB2045CTPBF
SCHOTTKY DIODES	VS-MBRB2045CTL-M3	96405	VS-MBRB2045CTTRLP
SCHOTTKY DIODES	VS-MBRB2045CTR-M3	96405	VS-MBRB2045CTTRRP
SCHOTTKY DIODES	VS-MBRB2080CT-M3	96404	VS-MBRB2080CTPBF
SCHOTTKY DIODES	VS-MBRB2080CTL-M3	96404	VS-MBRB2080CTTRLP
SCHOTTKY DIODES	VS-MBRB2080CTR-M3	96404	VS-MBRB2080CTTRRP
SCHOTTKY DIODES	VS-MBRB2090CT-M3	96404	VS-MBRB2090CTPBF
SCHOTTKY DIODES	VS-MBRB2535CT-M3	96406	VS-MBRB2535CTPBF
SCHOTTKY DIODES	VS-MBRB2535CTL-M3	96406	VS-MBRB2535CTTRLP
SCHOTTKY DIODES	VS-MBRB2535CTR-M3	96406	VS-MBRB2535CTTRRP
SCHOTTKY DIODES	VS-MBRB2545CT-M3	96406	VS-MBRB2545CTPBF
SCHOTTKY DIODES	VS-MBRB2545CTL-M3	96406	VS-MBRB2545CTTRLP
SCHOTTKY DIODES	VS-MBRB2545CTR-M3	96406	VS-MBRB2545CTTRRP
SCHOTTKY DIODES	VS-MBRB3030CTL-M3	96395	VS-MBRB3030CTLPBF
SCHOTTKY DIODES	VS-MBRB3030CTLL-M3	96395	VS-MBRB3030CTLLP
SCHOTTKY DIODES	VS-MBRB3030CTLR-M3	96395	VS-MBRB3030CTLRP
SCHOTTKY DIODES	VS-MBRB3045CT-M3	96407	VS-MBRB3045CTPBF

TO-263AB (D2PAK) & TO-262AA			
Family	Halogen-free nomenclature		Old nomenclature (PBF)
	Part Number	Datasheet	Part Number
SCHOTTKY DIODES	VS-MBRB3045CTL-M3	96407	VS-MBRB3045CTTRLP
SCHOTTKY DIODES	VS-MBRB3045CTR-M3	96407	VS-MBRB3045CTTRRP
SCHOTTKY DIODES	VS-MBRB4045CT-M3	96408	VS-MBRB4045CTPBF
SCHOTTKY DIODES	VS-MBRB4045CTL-M3	96408	VS-MBRB4045CTTRLP
SCHOTTKY DIODES	VS-MBRB4045CTR-M3	96408	VS-MBRB4045CTTRRP
SCHOTTKY DIODES	VS-MBRB735-M3	96396	VS-MBRB735PBF
SCHOTTKY DIODES	VS-MBRB735TRL-M3	96396	VS-MBRB735TRLPBF
SCHOTTKY DIODES	VS-MBRB735TRR-M3	96396	VS-MBRB735TRRPBF
SCHOTTKY DIODES	VS-MBRB745-M3	96396	VS-MBRB745PBF
SCHOTTKY DIODES	VS-MBRB745TRL-M3	96396	VS-MBRB745TRLPBF
SCHOTTKY DIODES	VS-MBRB745TRR-M3	96396	VS-MBRB745TRRPBF
SCHOTTKY DIODES	VS-STPS20L15G-M3	96397	VS-STPS20L15GPBF
SCHOTTKY DIODES	VS-STPS20L15GL-M3	96397	VS-STPS20L15GTRLP
SCHOTTKY DIODES	VS-STPS20L15GR-M3	96397	VS-STPS20L15GTRRP
SCHOTTKY DIODES	VS-10CTQ150-1-M3	95729	VS-10CTQ150-1PBF
SCHOTTKY DIODES	VS-15CTQ035-1-M3	94926	VS-15CTQ035-1PBF
SCHOTTKY DIODES	VS-15CTQ040-1-M3	94926	VS-15CTQ040-1PBF
SCHOTTKY DIODES	VS-15CTQ045-1-M3	94926	VS-15CTQ045-1PBF
SCHOTTKY DIODES	VS-16CTQ100-1-M3	94929	VS-16CTQ100-1PBF
SCHOTTKY DIODES	VS-20CTQ045-1-M3	94932	VS-20CTQ045-1PBF
SCHOTTKY DIODES	VS-20CTQ150-1-M3	95731	VS-20CTQ150-1PBF
SCHOTTKY DIODES	VS-30CTQ045-1-M3	94933	VS-30CTQ045-1PBF
SCHOTTKY DIODES	VS-30CTQ060-1-M3	94934	VS-30CTQ060-1PBF
SCHOTTKY DIODES	VS-30CTQ080-1-M3	94938	VS-30CTQ080-1PBF
SCHOTTKY DIODES	VS-30CTQ100-1-M3	94938	VS-30CTQ100-1PBF
SCHOTTKY DIODES	VS-32CTQ025-1-M3	94936	
SCHOTTKY DIODES	VS-32CTQ030-1-M3	94936	VS-32CTQ030-1PBF
SCHOTTKY DIODES	VS-40CTQ045-1-M3	94935	VS-40CTQ045-1PBF
SCHOTTKY DIODES	VS-40CTQ150-1-M3	95732	VS-40CTQ150-1PBF
SCHOTTKY DIODES	VS-40L15CT-1-M3	95733	VS-40L15CT-1PBF
SCHOTTKY DIODES	VS-42CTQ030-1-M3	94940	VS-42CTQ030-1PBF
SCHOTTKY DIODES	VS-43CTQ100-1-M3	94942	VS-43CTQ100-1PBF
SCHOTTKY DIODES	VS-47CTQ020-1-M3	94943	VS-47CTQ020-1PBF
SCHOTTKY DIODES	VS-48CTQ060-1-M3	94944	VS-48CTQ060-1PBF
SCHOTTKY DIODES	VS-MBR1535CT-1-M3	96403	VS-MBR1535CT-1PBF
SCHOTTKY DIODES	VS-MBR1545CT-1-M3	96403	VS-MBR1545CT-1PBF
SCHOTTKY DIODES	VS-MBR20100CT-1-M3	96404	VS-MBR20100CT-1PBF
SCHOTTKY DIODES	VS-MBR2035CT-1-M3	96405	VS-MBR2035CT-1PBF
SCHOTTKY DIODES	VS-MBR2045CT-1-M3	96405	VS-MBR2045CT-1PBF

TO-263AB (D2PAK) & TO-262AA			
Family	Halogen-free nomenclature		Old nomenclature (PBF)
	Part Number	Datasheet	Part Number
SCHOTTKY DIODES	VS-MBR2080CT-1-M3	96404	VS-MBR2080CT-1PBF
SCHOTTKY DIODES	VS-MBR2090CT-1-M3	96404	VS-MBR2090CT-1PBF
SCHOTTKY DIODES	VS-MBR2535CT-1-M3	96406	VS-MBR2535CT-1PBF
SCHOTTKY DIODES	VS-MBR2545CT-1-M3	96406	VS-MBR2545CT-1PBF
SCHOTTKY DIODES	VS-MBR3045CT-1-M3	96407	VS-MBR3045CT-1PBF
SCHOTTKY DIODES	VS-MBR4045CT-1-M3	96408	VS-MBR4045CT-1PBF

TO-220			
Family	Halogen-free nomenclature		Old Nomenclature (PBF)
	Part Number	Datasheet	Part Number
FRED	VS-15ETH03-M3	96181	VS-15ETH03PBF
FRED	VS-15ETH06-M3	96174	VS-15ETH06PBF
FRED	VS-15ETL06-M3	96175	VS-15ETL06PBF
FRED	VS-15ETX06-M3	96176	VS-15ETX06PBF
FRED	VS-16CTU04-M3	96197	VS-16CTU04PBF
FRED	VS-20CTH03-M3	96205	VS-20CTH03PBF
FRED	VS-30CTH02-M3	96206	VS-30CTH02PBF
FRED	VS-30CTH03-M3	96198	VS-30CTH03PBF
FRED	VS-30ETH06-M3	96182	VS-30ETH06PBF
FRED	VS-8ETH03-M3	96183	VS-8ETH03PBF
FRED	VS-8ETH06-M3	96177	VS-8ETH06PBF
FRED	VS-8ETL06-M3	96178	VS-8ETL06PBF
FRED	VS-8ETU04-M3	96184	VS-8ETU04PBF
FRED	VS-8ETX06-M3	96179	VS-8ETX06PBF
FRED	VS-MUR1020CT-M3	96199	VS-MUR1020CTPBF
FRED	VS-MUR1520-M3	96185	VS-MUR1520PBF
FRED	VS-MUR1620CT-M3	96200	VS-MUR1620CTPBF
FRED	VS-MUR2020CT-M3	96201	VS-MUR2020CTPBF
FRED	VS-MUR820-M3	96186	VS-MUR820PBF
HEXFRED	VS-HFA04TB60-M3	96187	VS-HFA04TB60PBF
HEXFRED	VS-HFA06TB120-M3	96188	VS-HFA06TB120PBF
HEXFRED	VS-HFA08TA60C-M3	96202	VS-HFA08TA60CPBF
HEXFRED	VS-HFA08TB120-M3	96189	VS-HFA08TB120PBF
HEXFRED	VS-HFA08TB60-M3	96190	VS-HFA08TB60PBF
HEXFRED	VS-HFA15TB60-M3	96191	VS-HFA15TB60PBF
HEXFRED	VS-HFA16TA60C-M3	96203	VS-HFA16TA60CPBF
HEXFRED	VS-HFA16TB120-M3	96192	VS-HFA16TB120PBF
HEXFRED	VS-HFA25TB60-M3	96193	VS-HFA25TB60PBF

TO-220			
Family	Halogen-free nomenclature		Old Nomenclature (PBF)
	Part Number	Datasheet	Part Number
HEXFRED	VS-HFA30TA60C-M3	96204	VS-HFA30TA60CPBF
STANDARD DIODES	VS-10ETF02-M3	96210	VS-10ETF02PBF
STANDARD DIODES	VS-10ETF04-M3	96210	VS-10ETF04PBF
STANDARD DIODES	VS-10ETF06-M3	96210	VS-10ETF06PBF
STANDARD DIODES	VS-10ETF10-M3	96211	VS-10ETF10PBF
STANDARD DIODES	VS-10ETF12-M3	96211	VS-10ETF12PBF
STANDARD DIODES	VS-10ETS08-M3	96212	VS-10ETS08PBF
STANDARD DIODES	VS-10ETS12-M3	96212	VS-10ETS12PBF
STANDARD DIODES	VS-20ATS08-M3	96244	VS-20ATS08PBF
STANDARD DIODES	VS-20ATS12-M3	96244	VS-20ATS12PBF
STANDARD DIODES	VS-20ETF02-M3	96213	VS-20ETF02PBF
STANDARD DIODES	VS-20ETF04-M3	96213	VS-20ETF04PBF
STANDARD DIODES	VS-20ETF06-M3	96213	VS-20ETF06PBF
STANDARD DIODES	VS-20ETF08-M3	96214	VS-20ETF08PBF
STANDARD DIODES	VS-20ETF10-M3	96214	VS-20ETF10PBF
STANDARD DIODES	VS-20ETF12-M3	96214	VS-20ETF12PBF
STANDARD DIODES	VS-20ETS08-M3	96244	VS-20ETS08PBF
STANDARD DIODES	VS-20ETS12-M3	96244	VS-20ETS12PBF
STANDARD DIODES	VS-20ETS12M-S1		VS-20ETS12P-S1
STANDARD DIODES	VS-20ETS16-M3	93405	VS-20ETS16PBF
THYRISTORS	VS-10TTS08-M3	96285	VS-10TTS08PBF
THYRISTORS	VS-12TTS08-M3	96286	VS-12TTS08PBF
THYRISTORS	VS-16TTS08-M3	96287	VS-16TTS08PBF
THYRISTORS	VS-16TTS12-M3	96287	VS-16TTS12PBF
THYRISTORS	VS-25TTS08-M3	96288	VS-25TTS08PBF
THYRISTORS	VS-25TTS12-M3	96288	VS-25TTS12PBF
THYRISTORS	VS-40TTS12-M3	96289	VS-40TTS12PBF
SCHOTTKY DIODES	VS-10CTQ150-M3	96245	VS-10CTQ150PBF
SCHOTTKY DIODES	VS-10TQ035-M3	96260	VS-10TQ035PBF
SCHOTTKY DIODES	VS-10TQ040-M3	96260	VS-10TQ040PBF
SCHOTTKY DIODES	VS-10TQ045-M3	96260	VS-10TQ045PBF
SCHOTTKY DIODES	VS-12CTQ035-M3	96270	VS-12CTQ035PBF
SCHOTTKY DIODES	VS-12CTQ040-M3	96270	VS-12CTQ040PBF
SCHOTTKY DIODES	VS-12CTQ045-M3	96270	VS-12CTQ045PBF
SCHOTTKY DIODES	VS-12TQ035-M3	96261	VS-12TQ035PBF
SCHOTTKY DIODES	VS-12TQ040-M3	96261	VS-12TQ040PBF
SCHOTTKY DIODES	VS-12TQ045-M3	96261	VS-12TQ045PBF
SCHOTTKY DIODES	VS-15CTQ035-M3	96271	VS-15CTQ035PBF
SCHOTTKY DIODES	VS-15CTQ040-M3	96271	VS-15CTQ040PBF

TO-220			
Family	Halogen-free nomenclature		Old Nomenclature (PBF)
	Part Number	Datasheet	Part Number
SCHOTTKY DIODES	VS-15CTQ045-M3	96271	VS-15CTQ045PBF
SCHOTTKY DIODES	VS-15TQ060-M3	96290	VS-15TQ060PBF
SCHOTTKY DIODES	VS-16CTQ060-M3	96272	VS-16CTQ060PBF
SCHOTTKY DIODES	VS-16CTQ080-M3	96272	VS-16CTQ080PBF
SCHOTTKY DIODES	VS-16CTQ100-M3	96272	VS-16CTQ100PBF
SCHOTTKY DIODES	VS-18TQ035-M3	96262	VS-18TQ035PBF
SCHOTTKY DIODES	VS-18TQ040-M3	96262	VS-18TQ040PBF
SCHOTTKY DIODES	VS-18TQ045-M3	96262	VS-18TQ045PBF
SCHOTTKY DIODES	VS-19TQ015-M3	94151	VS-19TQ015PBF
SCHOTTKY DIODES	VS-20CTQ035-M3	96273	VS-20CTQ035PBF
SCHOTTKY DIODES	VS-20CTQ040-M3	96273	VS-20CTQ040PBF
SCHOTTKY DIODES	VS-20CTQ045-M3	96273	VS-20CTQ045PBF
SCHOTTKY DIODES	VS-20CTQ150-M3	96246	VS-20CTQ150PBF
SCHOTTKY DIODES	VS-20L15T-M3	96291	VS-20L15TPBF
SCHOTTKY DIODES	VS-20TQ035-M3	96263	VS-20TQ035PBF
SCHOTTKY DIODES	VS-20TQ040-M3	96263	VS-20TQ040PBF
SCHOTTKY DIODES	VS-20TQ045-M3	96263	VS-20TQ045PBF
SCHOTTKY DIODES	VS-25CTQ035-M3	96274	VS-25CTQ035PBF
SCHOTTKY DIODES	VS-25CTQ040-M3	96274	VS-25CTQ040PBF
SCHOTTKY DIODES	VS-25CTQ045-M3	96274	VS-25CTQ045PBF
SCHOTTKY DIODES	VS-30CTQ035-M3	96275	VS-30CTQ035PBF
SCHOTTKY DIODES	VS-30CTQ040-M3	96275	VS-30CTQ040PBF
SCHOTTKY DIODES	VS-30CTQ045-M3	96275	VS-30CTQ045PBF
SCHOTTKY DIODES	VS-30CTQ050-M3	96276	VS-30CTQ050PBF
SCHOTTKY DIODES	VS-30CTQ060-M3	96276	VS-30CTQ060PBF
SCHOTTKY DIODES	VS-30CTQ080-M3	96277	VS-30CTQ080PBF
SCHOTTKY DIODES	VS-30CTQ100-M3	96277	VS-30CTQ100PBF
SCHOTTKY DIODES	VS-32CTQ025-M3	96278	VS-32CTQ025PBF
SCHOTTKY DIODES	VS-32CTQ030-M3	96278	VS-32CTQ030PBF
SCHOTTKY DIODES	VS-40CTQ045-M3	96247	VS-40CTQ045PBF
SCHOTTKY DIODES	VS-40CTQ150-M3	96248	VS-40CTQ150PBF
SCHOTTKY DIODES	VS-40L15CT-M3	96249	VS-40L15CTPBF
SCHOTTKY DIODES	VS-42CTQ030-M3	96250	VS-42CTQ030PBF
SCHOTTKY DIODES	VS-43CTQ100-M3	96251	VS-43CTQ100PBF
SCHOTTKY DIODES	VS-47CTQ020-M3	96252	VS-47CTQ020PBF
SCHOTTKY DIODES	VS-48CTQ060-M3	96253	VS-48CTQ060PBF
SCHOTTKY DIODES	VS-60CTQ035-M3	96279	VS-60CTQ035PBF
SCHOTTKY DIODES	VS-60CTQ040-M3	96279	VS-60CTQ040PBF
SCHOTTKY DIODES	VS-60CTQ045-M3	96279	VS-60CTQ045PBF

TO-220			
Family	Halogen-free nomenclature		Old Nomenclature (PBF)
	Part Number	Datasheet	Part Number
SCHOTTKY DIODES	VS-60CTQ150-M3	96254	VS-60CTQ150PBF
SCHOTTKY DIODES	VS-61CTQ035-M3	96280	VS-61CTQ035PBF
SCHOTTKY DIODES	VS-61CTQ040-M3	96280	VS-61CTQ040PBF
SCHOTTKY DIODES	VS-61CTQ045-M3	96280	VS-61CTQ045PBF
SCHOTTKY DIODES	VS-62CTQ030-M3	96255	VS-62CTQ030PBF
SCHOTTKY DIODES	VS-63CTQ100-M3	96256	VS-63CTQ100PBF
SCHOTTKY DIODES	VS-6TQ035-M3	96264	VS-6TQ035PBF
SCHOTTKY DIODES	VS-6TQ040-M3	96264	VS-6TQ040PBF
SCHOTTKY DIODES	VS-6TQ045-M3	96264	VS-6TQ045PBF
SCHOTTKY DIODES	VS-8TQ060-M3	96265	VS-8TQ060PBF
SCHOTTKY DIODES	VS-8TQ080-M3	96265	VS-8TQ080PBF
SCHOTTKY DIODES	VS-8TQ100-M3	96265	VS-8TQ100PBF
SCHOTTKY DIODES	VS-16CTQ100-M3	96272	VS-95-5164PBF
SCHOTTKY DIODES	VS-MBR1035-M3	96266	VS-MBR1035PBF
SCHOTTKY DIODES	VS-MBR1045-M3	96266	VS-MBR1045PBF
SCHOTTKY DIODES	VS-MBR1535CT-M3	96281	VS-MBR1535CTPBF
SCHOTTKY DIODES	VS-MBR1545CT-M3	96281	VS-MBR1545CTPBF
SCHOTTKY DIODES	VS-MBR1635-M3	96267	VS-MBR1635PBF
SCHOTTKY DIODES	VS-MBR1645-M3	96267	VS-MBR1645PBF
SCHOTTKY DIODES	VS-MBR20100CT-M3	96282	VS-MBR20100CTPBF
SCHOTTKY DIODES	VS-MBR2035CT-M3	96283	VS-MBR2035CTPBF
SCHOTTKY DIODES	VS-MBR2045CT-M3	96283	VS-MBR2045CTPBF
SCHOTTKY DIODES	VS-MBR2080CT-M3	96282	VS-MBR2080CTPBF
SCHOTTKY DIODES	VS-MBR2090CT-M3	96282	VS-MBR2090CTPBF
SCHOTTKY DIODES	VS-MBR2535CT-M3	96284	VS-MBR2535CTPBF
SCHOTTKY DIODES	VS-MBR2545CT-M3	96284	VS-MBR2545CTPBF
SCHOTTKY DIODES	VS-MBR3045CT-M3	96257	VS-MBR3045CTPBF
SCHOTTKY DIODES	VS-MBR4045CT-M3	96258	VS-MBR4045CTPBF
SCHOTTKY DIODES	VS-MBR735-M3	96268	VS-MBR735PBF
SCHOTTKY DIODES	VS-MBR745-M3	96268	VS-MBR745PBF
SCHOTTKY DIODES	VS-STPS20L15D-M3	96269	VS-STPS20L15DPBF
SCHOTTKY DIODES	VS-STPS40L15CT-M3	96259	VS-STPS40L15CTPBF

Note: upon this PCN approval, all future TO-263AB (D²PAK), TO-262AA and TO-220 Part Numbers will be shipped from either one of qualified locations.

ANNEX 1

Qualification Data

TO-263AB (D²PAK)

Test Item & Condition	Duration	Schottky	Thyristor	Hexfred	Fred	Diode
HTRB TjMax @100% Vr	168 Hrs	0/77	0/77	0/77	0/77	0/77
	500 Hrs	0/77	0/77	0/77	0/77	0/77
	1000 Hrs	0/77	0/77	0/77	0/77	0/77
Solderability @245°C/5sec	Post	0 / 10	0 / 10	0 / 10	0 / 10	0 / 10
Temperature Cycling @-55°C / +150°C / 30min.	250 Cys	0/77	0/77	0/77	0/77	0/77
	500 Cys	0/77	0/77	0/77	0/77	0/77
	1000 Cys	0/77	0/77	0/77	0/77	0/77
UFAST @Ta= 130°C , 85%R.H.	48 Hrs	0/77	0/77	0/77	0/77	0/77
	96 Hrs	0/77	0/77	0/77	0/77	0/77
IOL Delta Tj=100°C T0n/Toff >= 2min	500 Hrs	0/77	0/77	0/77	0/77	0/77
	1000 Hrs	0/77	0/77	0/77	0/77	0/77
H3TRB 85°C 85% HR @ 100V	168 Hrs	0/77	0/77	0/77	0/77	0/77
	500 Hrs	0/77	0/77	0/77	0/77	0/77
	1000 Hrs	0/77	0/77	0/77	0/77	0/77

2L TO-220AC & 3L TO-220AB

Test Item & Condition	Duration	Diode	Schottky	Fred	Thyristor
HTRB TjMax @100% Vr	168 Hrs	0/77	0/154	0/231	0/154
	500 Hrs	0/77	0/154	0/231	0/154
	1000 Hrs	0/77	0/154	0/231	0/154
Solderability @245°C/5sec	Post	0 / 10	0 / 20	0 / 30	0 / 20
Temperature Cycling @-55°C / +150°C / 30min.	250 Cys	0/77	0/154	0/231	0/154
	500 Cys	0/77	0/154	0/231	0/154
	1000 Cys	0/77	0/154	0/231	0/154
UFAST @Ta= 130°C , 85%R.H.	48 Hrs	0/77	0/154	0/231	0/154
	96 Hrs	0/77	0/154	0/231	0/154
IOL Delta Tj=100°C T0n/Toff >= 2min	500 Hrs	0/77	0/154	0/231	0/154
	1000 Hrs	0/77	0/154	0/231	0/154
H3TRB 85°C 85% HR @ 100V	168 Hrs	0/77	0/154	0/231	0/154
	500 Hrs	0/77	0/154	0/231	0/154
	1000 Hrs	0/77	0/154	0/231	0/154

ANNEX 2

Bill of Materials

TO-263AB (D²PAK) & TO-262AA

	ACTUAL	ADDITIONAL
Die Attach Solder	PbAgIn	PbSnAg
Mold Compound	CEL9220HF13	ELER-8-620A-1

2L TO-220AC & 3L TO-220AB

	ACTUAL	ADDITIONAL
Die Attach Solder (Standard Diodes & Thyristors)	PbSn	PbSnAg
Die Attach Solder (Fred, Hexfred & Schottky Diodes)	SbSnAg	PbSnAg
Mold Compound	SG-8200DTV	GR260SL
Finishing	Tin Dipping	Tin Plating

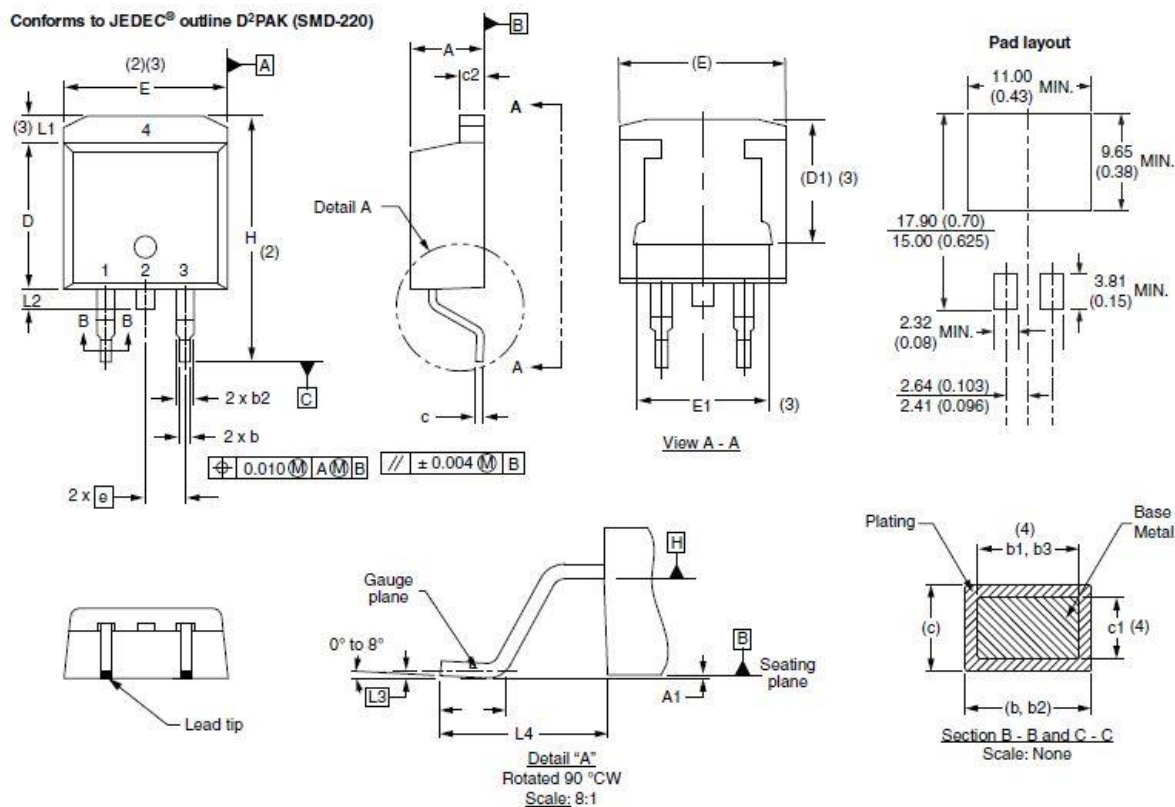
ANNEX 3

Package Outline Dimension

TO-263AB (D²PAK)

DIMENSIONS in millimeters and inches

Conforms to JEDEC® outline D²PAK (SMD-220)



SYMBOL	MILLIMETERS		INCHES		NOTES
	MIN.	MAX.	MIN.	MAX.	
A	4.06	4.83	0.160	0.190	
A1	0.00	0.254	0.000	0.010	
b	0.51	0.99	0.020	0.039	
b1	0.51	0.89	0.020	0.035	4
b2	1.14	1.78	0.045	0.070	
b3	1.14	1.73	0.045	0.068	4
c	0.38	0.74	0.015	0.029	
c1	0.38	0.58	0.015	0.023	4
c2	1.14	1.65	0.045	0.065	
D	8.51	9.65	0.335	0.380	2

SYMBOL	MILLIMETERS		INCHES		NOTES
	MIN.	MAX.	MIN.	MAX.	
D1	6.86	8.00	0.270	0.315	3
E	9.65	10.67	0.380	0.420	2, 3
E1	7.90	8.80	0.311	0.346	3
e	2.54 BSC		0.100 BSC		
H	14.61	15.88	0.575	0.625	
L	1.78	2.79	0.070	0.110	
L1	-	1.65	-	0.066	3
L2	1.27	1.78	0.050	0.070	
L3	0.25 BSC		0.010 BSC		
L4	4.78	5.28	0.188	0.208	

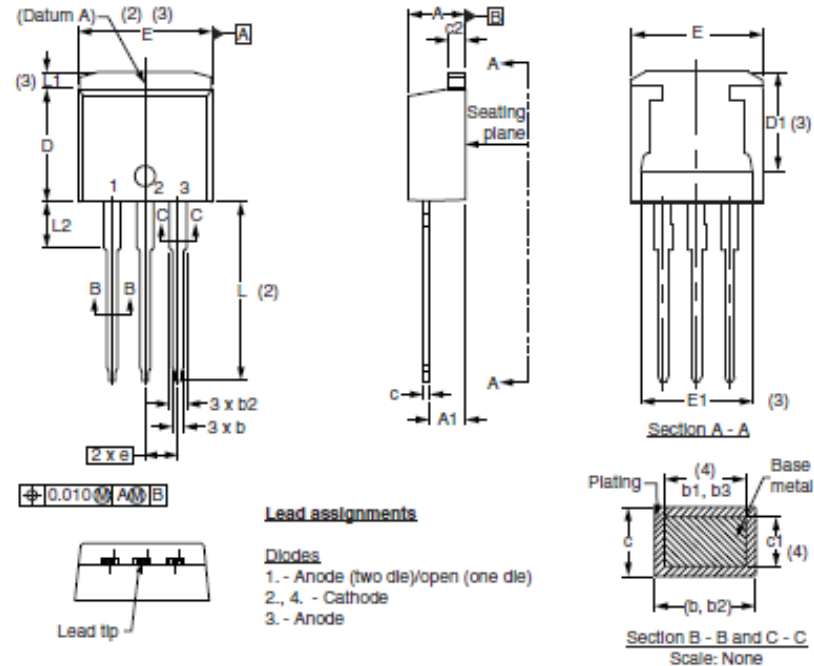
Notes

- (1) Dimensioning and tolerancing per ASME Y14.5 M-1994
- (2) Dimension D and E do not include mold flash. Mold flash shall not exceed 0.127 mm (0.005") per side. These dimensions are measured at the outmost extremes of the plastic body
- (3) Thermal pad contour optional within dimension E, L1, D1 and E1
- (4) Dimension b1 and c1 apply to base metal only
- (5) Datum A and B to be determined at datum plane H
- (6) Controlling dimension: inches
- (7) Outline conforms to JEDEC® outline TO-263AB

TO-262AA

DIMENSIONS in millimeters and inches

Modified JEDEC® outline TO-262



SYMBOL	MILLIMETERS		INCHES		NOTES
	MIN.	MAX.	MIN.	MAX.	
A	4.06	4.83	0.160	0.190	
A1	2.03	3.02	0.080	0.119	
b	0.51	0.99	0.020	0.039	
b1	0.51	0.89	0.020	0.035	4
b2	1.14	1.78	0.045	0.070	
b3	1.14	1.73	0.045	0.068	4
c	0.38	0.74	0.015	0.029	
c1	0.38	0.58	0.015	0.023	4
c2	1.14	1.65	0.045	0.065	
D	8.51	9.65	0.335	0.380	2
D1	6.86	8.00	0.270	0.315	3
E	9.65	10.67	0.380	0.420	2, 3
E1	7.90	8.80	0.311	0.346	3
e	2.54 BSC		0.100 BSC		
L	13.46	14.10	0.530	0.555	
L1	-	1.65	-	0.065	3
L2	3.56	3.71	0.140	0.146	

Notes

(1) Dimensioning and tolerancing as per ASME Y14.5M-1994

(2) Dimension D and E do not include mold flash. Mold flash shall not exceed 0.127 mm (0.005") per side. These dimensions are measured at the outmost extremes of the plastic body

(3) Thermal pad contour optional within dimension E, L1, D1 and E1

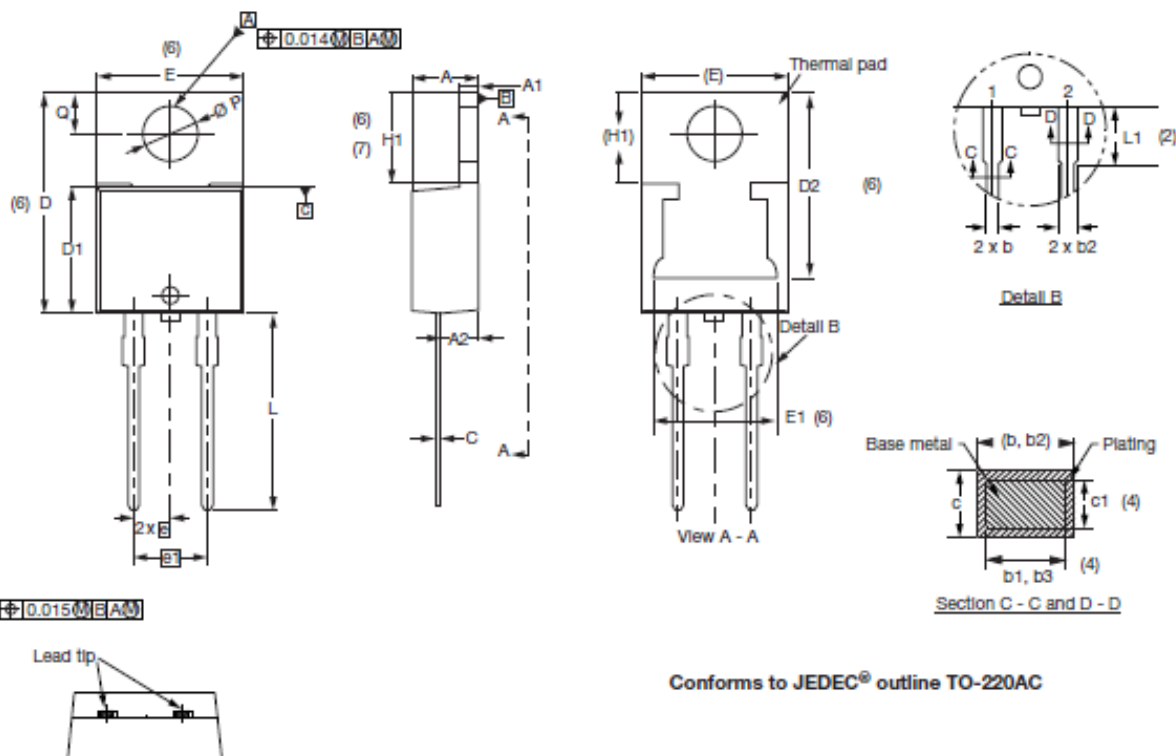
(4) Dimension b1 and c1 apply to base metal only

(5) Controlling dimension: inches

(6) Outline conform to JEDEC® TO-262 except A1 (max.), b (min., max.), b1 (min.), b2 (max.), c (min.), c1(min.), c2 (max.), D (min.), E (max.), L1 (max.), L2 (min., max.)

2L TO-220AC

DIMENSIONS in millimeters and inches



SYMBOL	MILLIMETERS		INCHES		NOTES
	MIN.	MAX.	MIN.	MAX.	
A	4.25	4.65	0.167	0.183	
A1	1.14	1.40	0.045	0.055	
A2	2.50	2.92	0.098	0.115	
b	0.69	1.01	0.027	0.040	
b1	0.38	0.97	0.015	0.038	4
b2	1.20	1.73	0.047	0.068	
b3	1.14	1.73	0.045	0.068	4
c	0.36	0.61	0.014	0.024	
c1	0.36	0.56	0.014	0.022	4
D	14.85	15.35	0.585	0.604	3
D1	8.38	9.02	0.330	0.355	

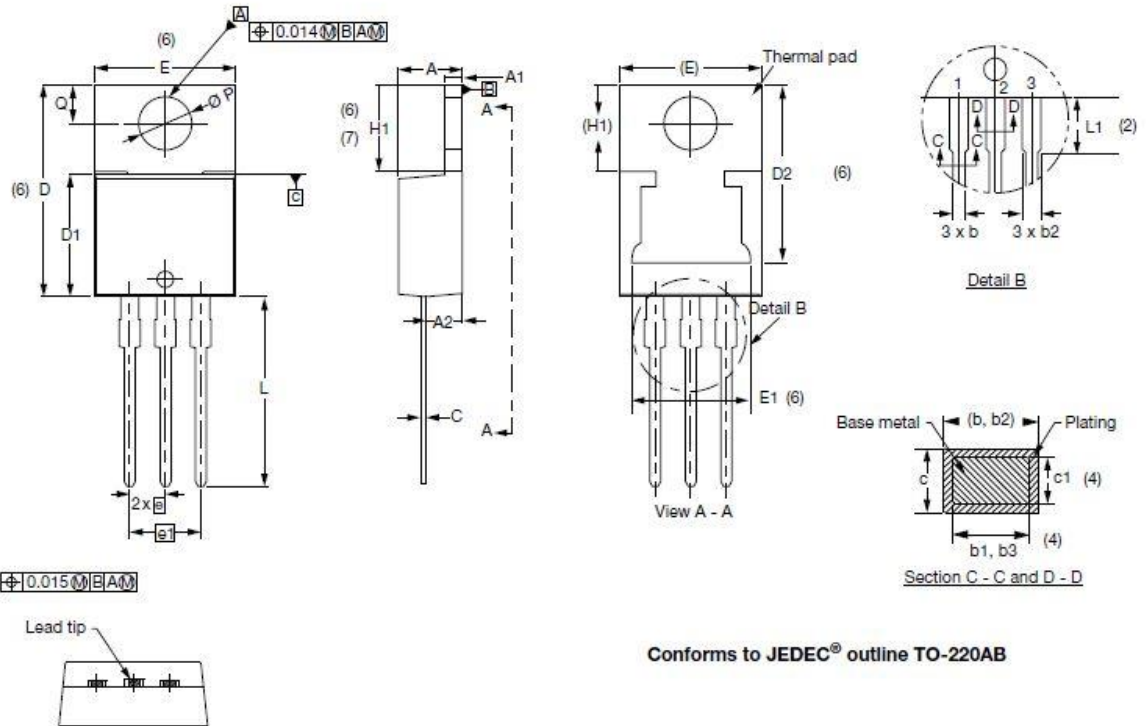
SYMBOL	MILLIMETERS		INCHES		NOTES
	MIN.	MAX.	MIN.	MAX.	
D2	11.68	12.88	0.460	0.507	6
E	10.11	10.51	0.398	0.414	3, 6
E1	6.86	8.89	0.270	0.350	6
e	2.41	2.67	0.095	0.105	
e1	4.88	5.28	0.192	0.208	
H1	6.09	6.48	0.240	0.255	6, 7
L	13.52	14.02	0.532	0.552	
L1	3.32	3.82	0.131	0.150	2
Ø P	3.54	3.91	0.139	0.154	
Q	2.60	3.00	0.102	0.118	

Notes

- (1) Dimensioning and tolerancing as per ASME Y14.5M-1994
- (2) Lead dimension and finish uncontrolled in L1
- (3) Dimension D, D1, and E do not include mold flash. Mold flash shall not exceed 0.127 mm (0.005") per side. These dimensions are measured at the outermost extremes of the plastic body
- (4) Dimension b1, b3, and c1 apply to base metal only
- (5) Controlling dimensions: inches
- (6) Thermal pad contour optional within dimensions E, H1, D2, and E1
- (7) Outline conforms to JEDEC® TO-220, except D2 (minimum)

3L TO-220AB

DIMENSIONS in millimeters and inches



Conforms to JEDEC® outline TO-220AB

SYMBOL	MILLIMETERS		INCHES		NOTES
	MIN.	MAX.	MIN.	MAX.	
A	4.25	4.65	0.167	0.183	
A1	1.14	1.40	0.045	0.055	
A2	2.50	2.92	0.098	0.115	
b	0.69	1.01	0.027	0.040	
b1	0.38	0.97	0.015	0.038	4
b2	1.20	1.73	0.047	0.068	
b3	1.14	1.73	0.045	0.068	4
c	0.36	0.61	0.014	0.024	
c1	0.36	0.56	0.014	0.022	4
D	14.85	15.35	0.585	0.604	3
D1	8.38	9.02	0.330	0.355	
D2	11.68	12.88	0.460	0.507	6
E	10.11	10.51	0.398	0.414	3, 6
E1	6.86	8.89	0.270	0.350	6
e	2.41	2.67	0.095	0.105	
e1	4.88	5.28	0.192	0.208	
H1	6.09	6.48	0.240	0.255	6, 7
L	13.52	14.02	0.532	0.552	
L1	3.32	3.82	0.131	0.150	2
Ø P	3.54	3.91	0.139	0.154	
Q	2.60	3.00	0.102	0.118	

Notes

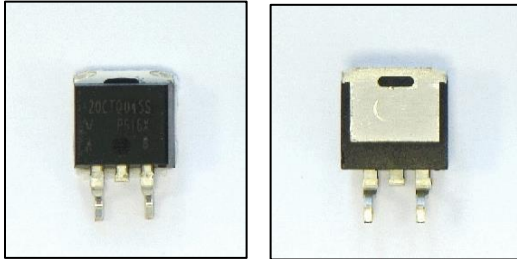
- (1) Dimensioning and tolerancing as per ASME Y14.5M-1994
- (2) Lead dimension and finish uncontrolled in L1
- (3) Dimension D, D1 and E do not include mold flash. Mold flash shall not exceed 0.127 mm (0.005") per side. These dimensions are measured at the outermost extremes of the plastic body
- (4) Dimension b1, b3 and c1 apply to base metal only
- (5) Controlling dimensions: inches
- (6) Thermal pad contour optional within dimensions E, H1, D2 and E1
- (7) Outline conforms to JEDEC TO-220, except D2 (minimum)

ANNEX 4

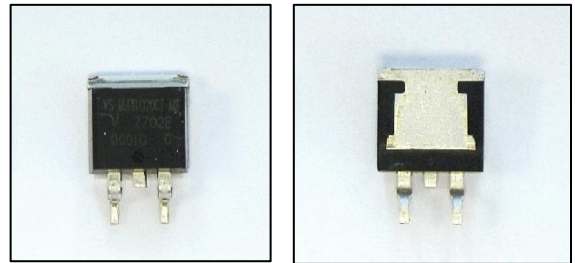
Outline

TO-263AB (D²PAK)

Current

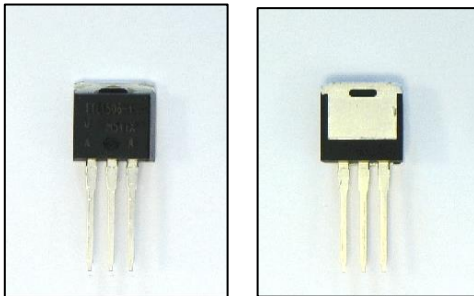


Additional

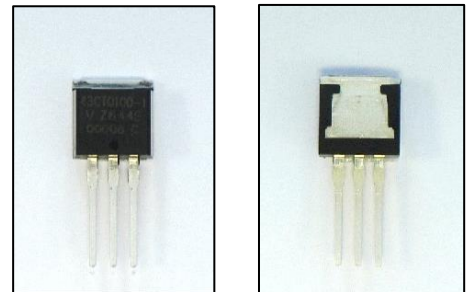


TO-262AA

Current

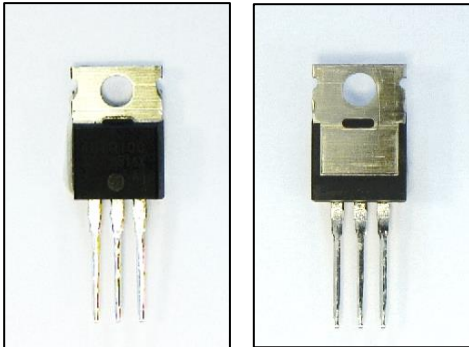


Additional

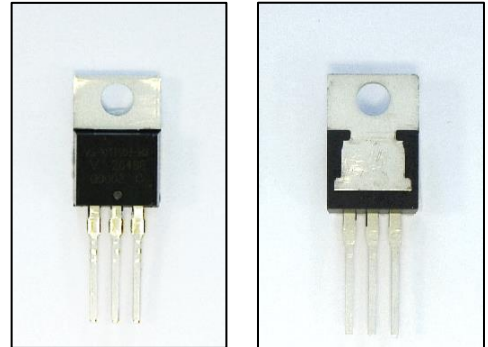


3L TO-220AB

Current

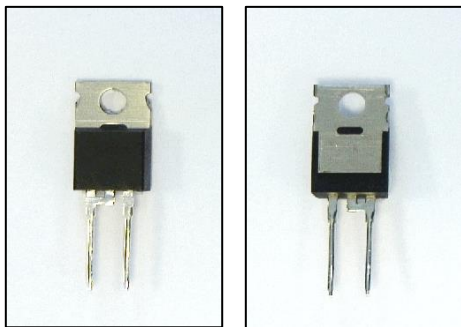


Additional



2L TO-220AC

Current



Additional

