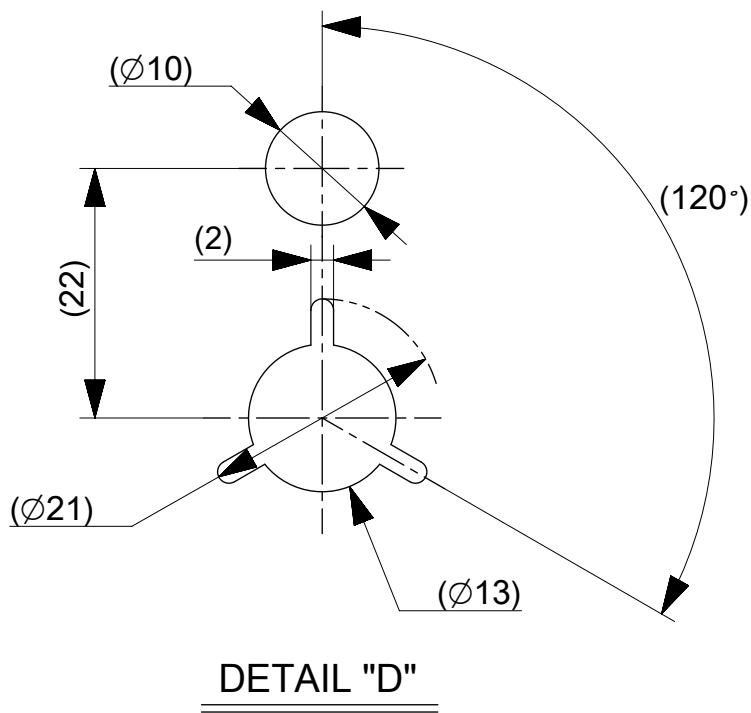
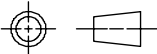
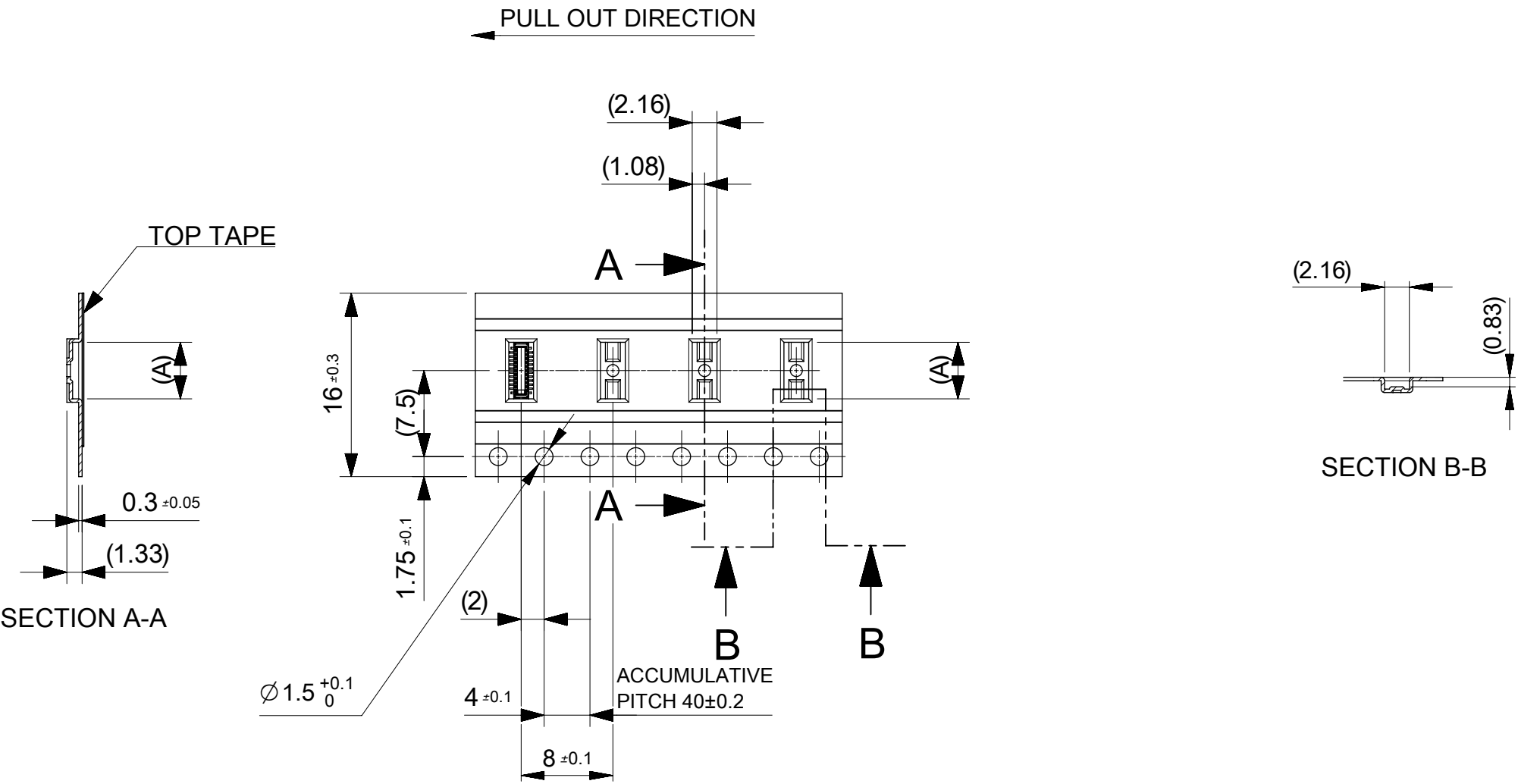


- NOTES
1. FOR DIMENSION OF PRODUCT, REFER TO PRODUCT DRAWING.
 2. NUMBER OF CONNECTORS : 7000PCS/REEL
 3. LEAD TAPE LENGTH
- PULL OUT DIRECTION
- 100 MIN. TOP TAPE BONDED PART (EMPTY)
- 400 MIN. COMPONENT SUPPLIER TAIL PART (EMPTY) 160 MIN.
4. TOP TAPE PEEL FORCE IS DEFINED BY IEC60286-3.
 5. MATERIAL
CARRIER TAPE : POLYSTYRENE
TOP TAPE : PET , OTHER
REEL : POLYSTYRENE (PS) < RECYCLE MATERIAL CONTAINED >



CONNECTOR SERIES NO. 505274**09

THIS DRAWING CONTAINS INFORMATION THAT IS PROPRIETARY TO MOLEX ELECTRONIC TECHNOLOGIES, LLC AND SHOULD NOT BE USED WITHOUT WRITTEN PERMISSION														
RELEASED	EC NO: 123537 DRWN: FSATO CHK'D: MSASAO APPR: MSASAO	2017/10/20 2017/11/01 2017/11/02	GENERAL TOLERANCES (UNLESS SPECIFIED)		DIMENSION UNITS	SCALE	<div>molex®</div>							
					mm	NTS								
			ANGULAR TOL ± 3.0 °		DRWN BY		DATE		0.35 BB H=0.8 SSB8RP PLUG EMBSTP PKG					
					FSATO		2017/10/20							
			4 PLACES ± 0.03		CHK'D BY		DATE							
			3 PLACES ± 0.03		MSASAO		2017/11/01							
			2 PLACES ± 0.05		APPR BY		DATE							
			1 PLACE ± 0.1		MSASAO		2017/11/02		PRODUCT CUSTOMER DRAWING					
			0 PLACES ± 0.2											
			DRAFT WHERE APPLICABLE MUST REMAIN WITHIN DIMENSIONS		DRAWING SIZE		THIRD ANGLE PROJECTION		SERIES		MATERIAL NUMBER		CUSTOMER	
		A3				505274		SEE CHART		GENERAL				
A		REV				DOCUMENT NUMBER		DOC TYPE		DOC PART		SHEET NUMBER		
						5052740001-SD		PSD		000		1 OF 3		



16	21.4	17.4	6.68	5052743012	○	---	30
			5.63	5052742412	○	---	24
			4.93	5052742012	○	---	20
			4.23	5052741612	○	---	16
			3.18	5052741012	○	---	10
			2.48	5052740612	○	---	6
キャリアテープ幅 CARRIER TAPE WIDTH	C	B	(A)	EMBOSSED TAPE PACKAGE	HIGH VOL. TOOL	LOW VOL. TOOL	CIRCUIT
				ORDER NO.	SAMPLE PREPARATION ○:TOOLED △:WOOK IN PROCESS ---:TOOLING TO BE CONFIRMED		

THIS DRAWING CONTAINS INFORMATION THAT IS PROPRIETARY TO MOLEX ELECTRONIC TECHNOLOGIES, LLC AND SHOULD NOT BE USED WITHOUT WRITTEN PERMISSION

RELEASED

EC NO: 123537
DRWN: FSATO
CHK'D: MSASAO
APPR: MSASAO

2017/10/20
2017/11/01
2017/11/02

GENERAL TOLERANCES
(UNLESS SPECIFIED)

ANGULAR TOL ± 3.0 °

4 PLACES ± 0.03

3 PLACES ± 0.03

2 PLACES ± 0.05

1 PLACE ± 0.1

0 PLACES ± 0.2

DRAFT WHERE APPLICABLE
MUST REMAIN
WITHIN DIMENSIONS

DIMENSION UNITS
mm

SCALE
NTS

DRWN BY
FSATO

DATE
2017/10/20

CHK'D BY
MSASAO

DATE
2017/11/01

APPR BY
MSASAO

DATE
2017/11/02

DRAWING SIZE
A3

THIRD ANGLE PROJECTION

molex®

0.35 BB H=0.8 SSB8RP PLUG EMBSTP PKG

PRODUCT CUSTOMER DRAWING

SERIES
505274

MATERIAL NUMBER
SEE CHART

CUSTOMER
GENERAL

DOCUMENT NUMBER
5052740001-SD

DOC TYPE
PSD

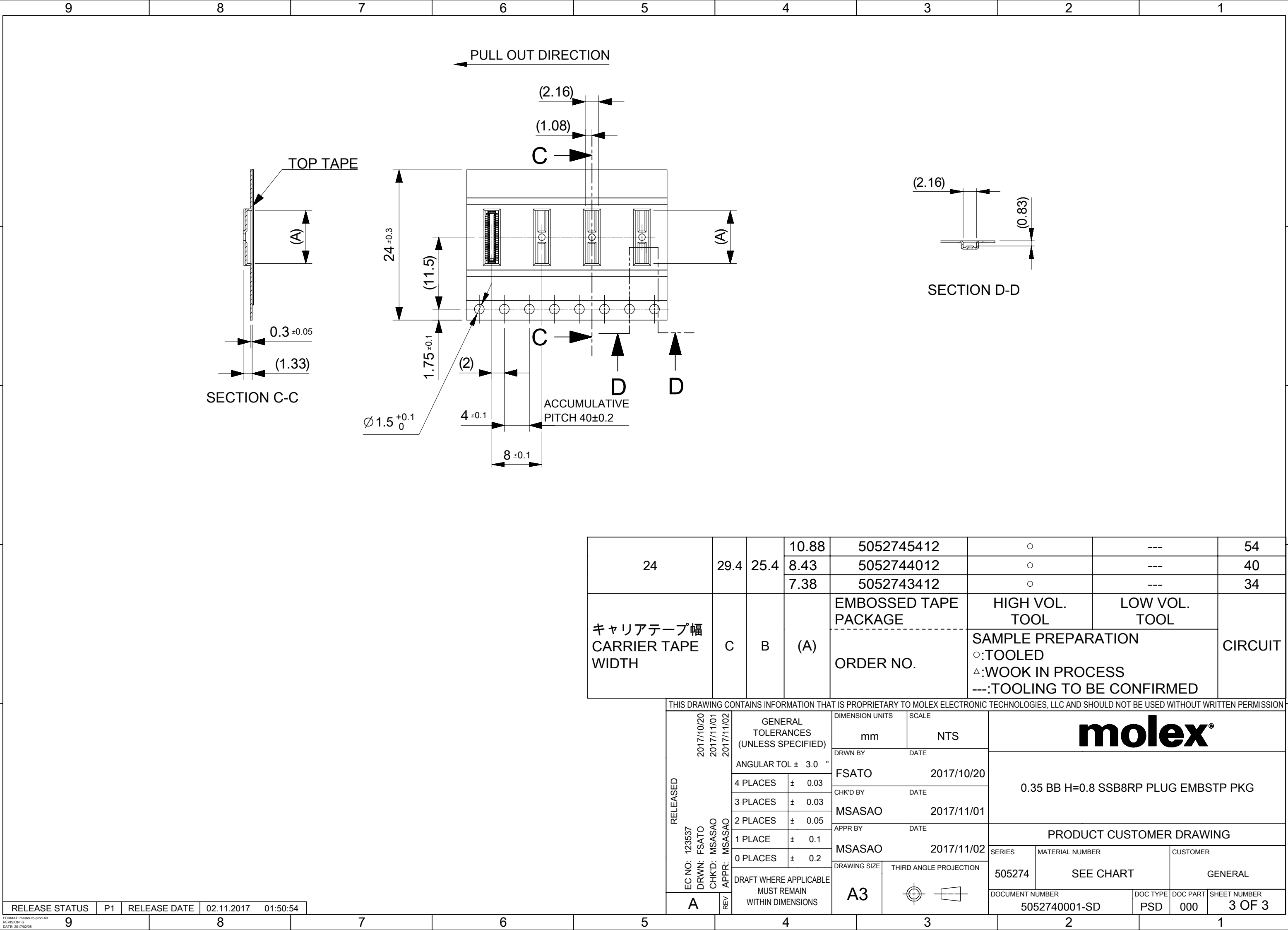
DOC PART
000

SHEET NUMBER
2 OF 3

RELEASE STATUS
P1

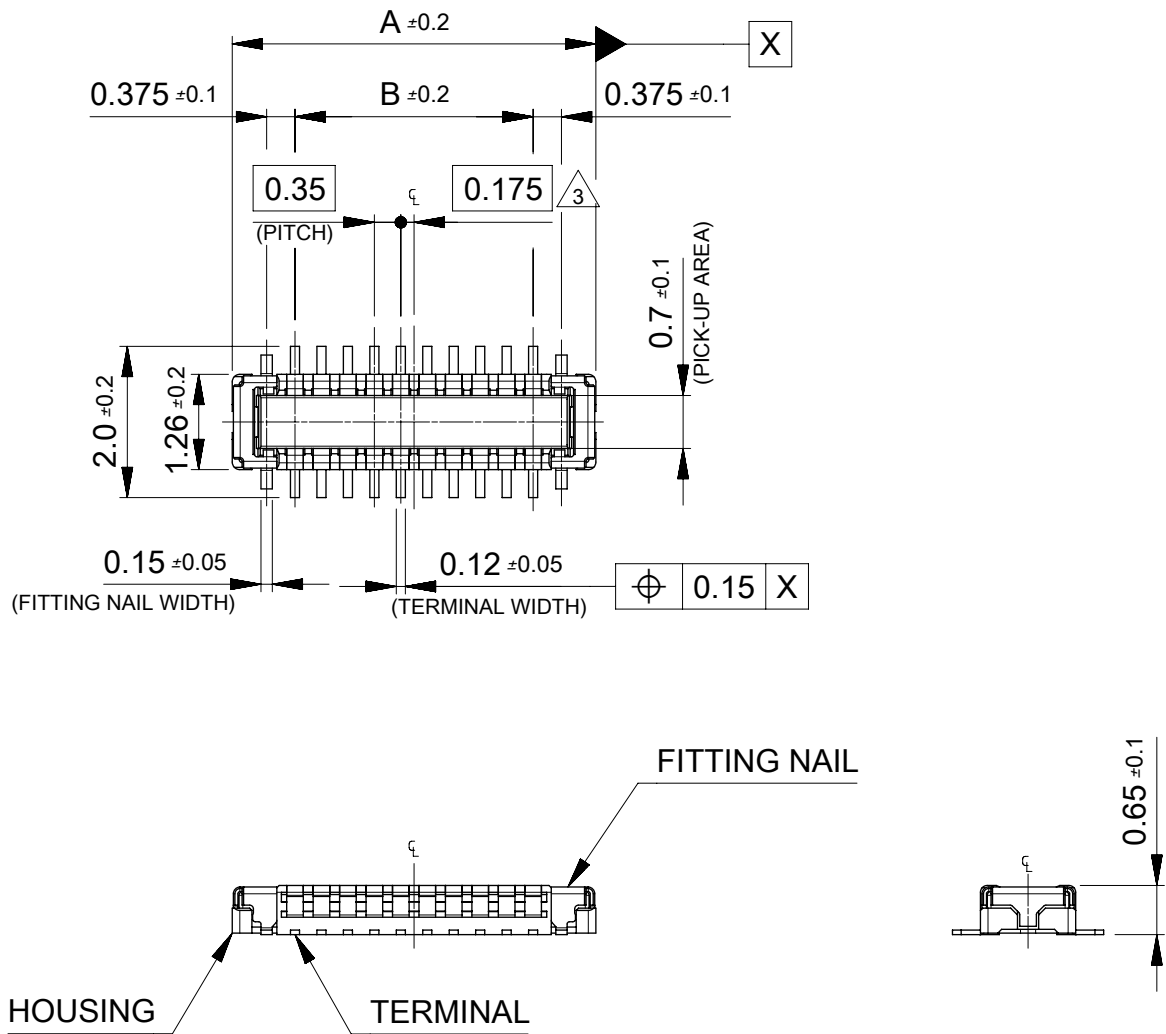
RELEASE DATE
02.11.2017

01:50:54



24	29.4	25.4	10.88	5052745412	○	---	54
			8.43	5052744012	○	---	40
			7.38	5052743412	○	---	34
キャリアテープ幅 CARRIER TAPE WIDTH	C	B	(A)	EMBOSSED TAPE PACKAGE	HIGH VOL. TOOL	LOW VOL. TOOL	CIRCUIT
				ORDER NO.	SAMPLE PREPARATION ○:TOOLED △:WOOK IN PROCESS ---:TOOLING TO BE CONFIRMED		

THIS DRAWING CONTAINS INFORMATION THAT IS PROPRIETARY TO MOLEX ELECTRONIC TECHNOLOGIES, LLC AND SHOULD NOT BE USED WITHOUT WRITTEN PERMISSION																										
<div><div><div>RELEASED</div><div>EC NO: 123537 DRWN: FSATO CHK'D: MSASAO REV APPR: MSASAO</div><div>2017/10/20 2017/11/01 2017/11/02</div></div><div><div>GENERAL TOLERANCES (UNLESS SPECIFIED)</div><div>ANGULAR TOL ± 3.0 °</div><div>4 PLACES ± 0.03</div><div>3 PLACES ± 0.03</div><div>2 PLACES ± 0.05</div><div>1 PLACE ± 0.1</div><div>0 PLACES ± 0.2</div><div>DRAFT WHERE APPLICABLE MUST REMAIN WITHIN DIMENSIONS</div></div><div><div>DIMENSION UNITS</div><div>mm</div><div>DRWN BY</div><div>FSATO</div><div>CHK'D BY</div><div>MSASAO</div><div>APPR BY</div><div>MSASAO</div><div>DRAWING SIZE</div><div>A3</div><div>SCALE</div><div>NTS</div><div>DATE</div><div>2017/10/20</div><div>DATE</div><div>2017/11/01</div><div>DATE</div><div>2017/11/02</div><div>THIRD ANGLE PROJECTION</div><div></div></div><div><div>molex®</div><div>0.35 BB H=0.8 SSB8RP PLUG EMBSTP PKG</div><div>PRODUCT CUSTOMER DRAWING</div><div><div>SERIES</div><div>505274</div><div>DOCUMENT NUMBER</div><div>5052740001-SD</div><div>MATERIAL NUMBER</div><div>SEE CHART</div><div>DOC TYPE</div><div>PSD</div><div>CUSTOMER</div><div>GENERAL</div><div>DOC PART</div><div>000</div><div>SHEET NUMBER</div><div>3 OF 3</div></div></div></div>																										
RELEASE STATUS		P1	RELEASE DATE		02.11.2017	01:50:54																				
9			8			7			6			5			4			3			2			1		
FORMAT: master-ib-prod-A3 REVISION: G DATE: 2017/02/06																										

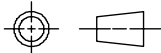


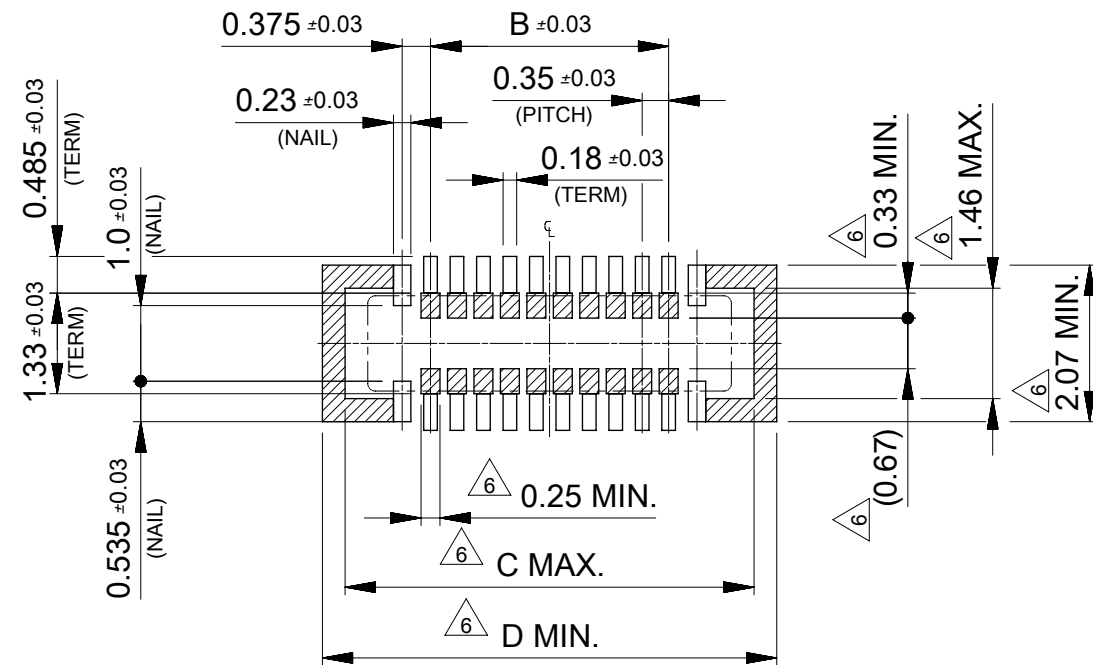
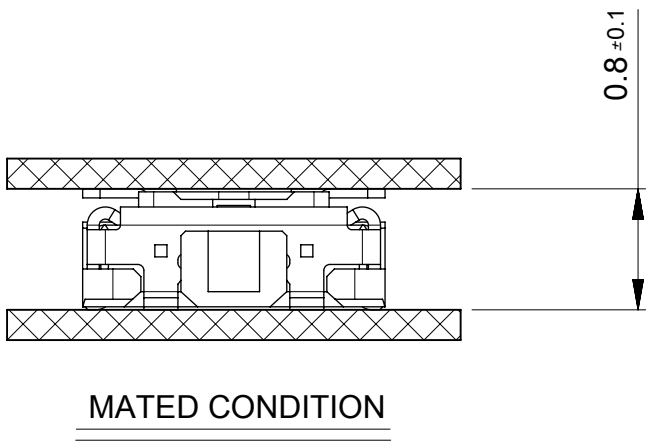
NOTES

- MATERIAL
HOUSING : LIQUID CRYSTAL POLYMER UL94V-0 (COLOR : BLACK)
TERMINAL : COPPER ALLOY
FITTING NAIL : COPPER ALLOY
 - PLATING
TERMINAL :
GOLD
UNDER PLATING NICKEL
*DIVIDE INTO PARTS THE GOLD PLATING OF CONTACT
FITTING NAIL :
GOLD(ONLY CONTACT AND TAIL PART)
UNDER PLATING NICKEL
*GOLD PLATING WILL BE DIVIDED THE CONTACT FROM THE TAIL PART
BY THE NICKEL PLATING. THERE MAY BE SLIGHT DIFFERENCES
IN THE OTHER PART COLORING. BUT THERE WILL BE NO INFLUENCE
ON THE PRODUCT'S PAERFORMANCE.
- △₃ APPLY FOR (CIRCUIT/2)=EVEN
4. MATE WITH : 505270**12
5. TAIL AND FITTING NAIL COPLANARITY TO BE 0.08MAXIMUM.
- △₆ PROHIBITED AREA OF PATTERN WIRING AND SOLDER.
(FOR EACH AREA, THE WIRING THAT TOUCHES ON THE SOLDER
CAN BE ATTACHED, THEN COVERED WITH A FILM TO KEEP SOLDER OUT.)

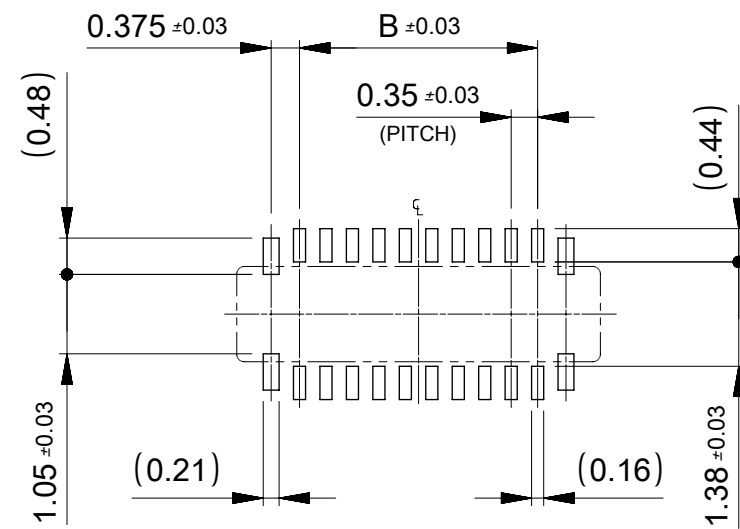
11.96	11.36	9.1	10.76	5052745412	○	---	54
9.51	8.91	6.65	8.31	5052744012	○	---	40
8.46	7.86	5.6	7.26	5052743412	○	---	34
7.76	7.16	4.9	6.56	5052743012	○	---	30
6.71	6.11	3.85	5.51	5052742412	○	---	24
6.01	5.41	3.15	4.81	5052742012	○	---	20
5.31	4.71	2.45	4.11	5052741612	○	---	16
4.26	3.66	1.4	3.06	5052741012	○	---	10
3.56	2.96	0.7	2.36	5052740612	○	---	6
D	C	B	A	EMBOSSSED TAPE PACKAGE	MASS PRODUCTION	LOW VOL. TOOL	CIRCUIT
				ORDER No.	SMAPLE PREPARATION ○: TOOLED △: WORK IN PROCESS ---: TOOLING TO BE CONFIRMED		
				CONNECTOR No. : 505274**09			

THIS DRAWING CONTAINS INFORMATION THAT IS PROPRIETARY TO MOLEX ELECTRONIC TECHNOLOGIES, LLC AND SHOULD NOT BE USED WITHOUT WRITTEN PERMISSION

RELEASED	EC NO: 123537 DRWN: FSATO CHK'D: MSASAO APPR: MSASAO	2017/10/20 2017/11/01 2017/11/02	GENERAL TOLERANCES (UNLESS SPECIFIED) ANGULAR TOL ± 3.0 ° 4 PLACES ± 0.03 3 PLACES ± 0.03 2 PLACES ± 0.05 1 PLACE ± 0.1 0 PLACES ± 0.2 DRAFT WHERE APPLICABLE MUST REMAIN WITHIN DIMENSIONS		DIMENSION UNITS		SCALE		molex® 0.35 BB CONN. H=0.8 SSB8RP PLUG ASSY														
					mm		10:1																
					DRWN BY				DATE				PRODUCT CUSTOMER DRAWING										
					FSATO				2017/10/20														
					CHK'D BY				DATE				SERIES					MATERIAL NUMBER		CUSTOMER			
					MSASAO				2017/11/01														
					APPR BY				DATE				DOCUMENT NUMBER					DOC TYPE	DOC PART	SHEET NUMBER			
					MSASAO				2017/11/02														
					DRAWING SIZE		THIRD ANGLE PROJECTION		505274					SEE CHART					GENERAL				
					A3																		



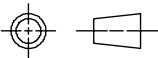
RECOMMENDED P.W.BOARD PATTERN LAYOUT (REFERENCE)



RECOMMENDED METAL MASK LAYOUT (REFERENCE)

RECOMMENDED THICKNESS OF METAL MASK : t=0.08mm
RECOMMENDED OPEN APERTURE RATIO OF METAL MASK : 80%

THIS DRAWING CONTAINS INFORMATION THAT IS PROPRIETARY TO MOLEX ELECTRONIC TECHNOLOGIES, LLC AND SHOULD NOT BE USED WITHOUT WRITTEN PERMISSION

RELEASED EC NO: 123537 DRWN: FSATO CHK'D: MSASAO APPR: MSASAO		2017/10/20		2017/11/01		2017/11/02		GENERAL TOLERANCES (UNLESS SPECIFIED)		DIMENSION UNITS		SCALE		molex®					
		ANGULAR TOL ± 3.0 °		mm		10:1													
		4 PLACES		± 0.03		DRWN BY		DATE		0.35 BB CONN. H=0.8 SSB8RP PLUG ASSY									
		3 PLACES		± 0.03		FSATO		2017/10/20											
		2 PLACES		± 0.05		CHK'D BY		DATE		PRODUCT CUSTOMER DRAWING									
		1 PLACE		± 0.1		MSASAO		2017/11/01											
		0 PLACES		± 0.2		APPR BY		DATE		SERIES 505274									
		DRAFT WHERE APPLICABLE MUST REMAIN WITHIN DIMENSIONS		MSASAO		2017/11/02		MATERIAL NUMBER SEE SHEET 1											
		A		REV		DRAWING SIZE								THIRD ANGLE PROJECTION		CUSTOMER GENERAL			
						A3													
A		REV		DOCUMENT NUMBER				DOC TYPE		DOC PART		SHEET NUMBER							
				5052741001-SD				PSD		000		2 OF 2							