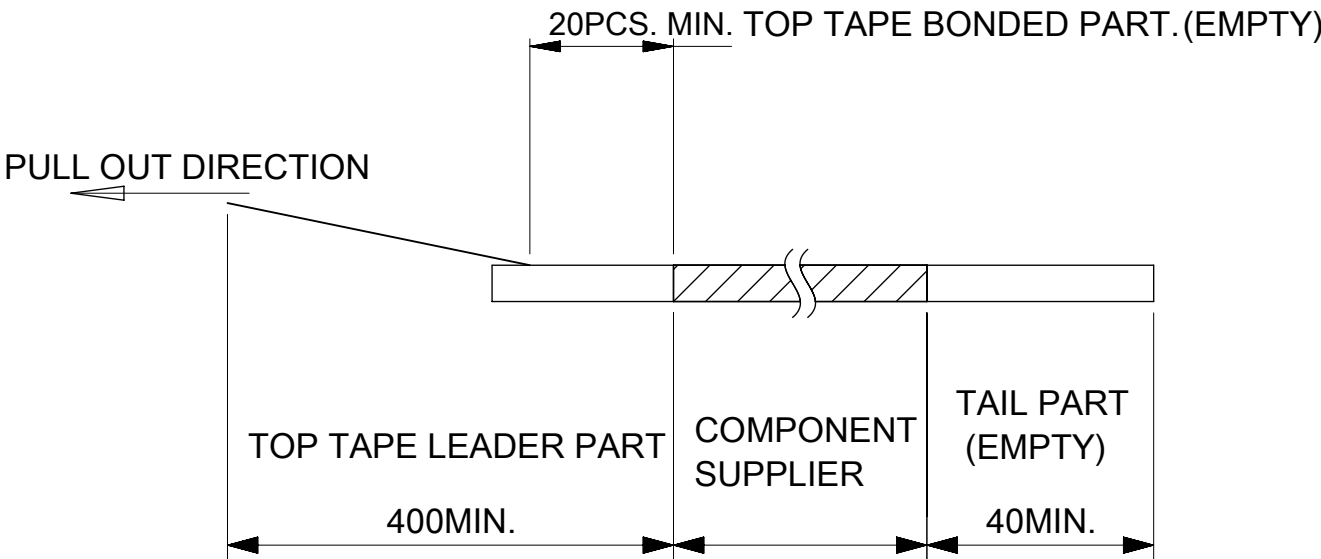


DETAIL "D"

NOTES


- RE DETAILED DIMENSION, SEE PRODUCT DRAWING.
- NUMBER OF CONNECTORS : 8000 PCS/REEL.
- LEAD TAPE LENGTH.



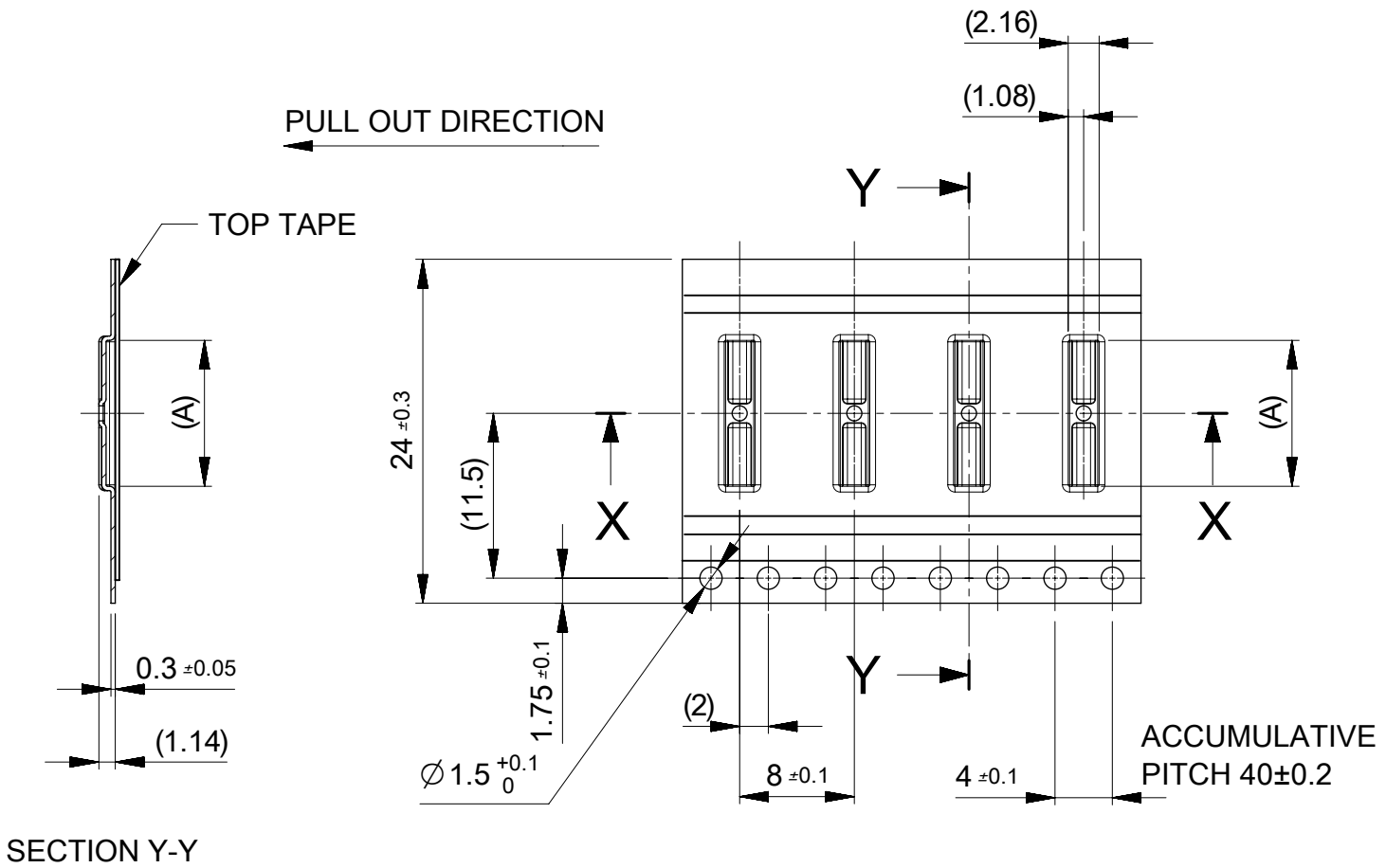
- TOP TAPE PEEL FORCE IS DEFINED BY IEC60286-3
- MATERIAL  
CARRER TAPE :POLYSTYRENE  
TOP TAPE :PET , OTHER  
REEL :POLYSTYRENE(PS)(RECYCLE MATERIAL CONTAINED)

△<sub>6</sub> Only 6 circuit is different in this dimension.

MODEL NO. 505070-\*\*22

THIS DRAWING CONTAINS INFORMATION THAT IS PROPRIETARY TO MOLEX ELECTRONIC TECHNOLOGIES, LLC AND SHOULD NOT BE USED WITHOUT WRITTEN PERMISSION									
CURRENT REV DESC: RELEASED		<div>molex</div>							
0.35 BB CONN. H=0.6 SSB6 RP PLUG ASSY									
PRODUCT CUSTOMER DRAWING									
DOCUMENT NUMBER		DOC TYPE		DOC PART		REVISION			
5050700000		PSD		007		B			
MATERIAL NUMBER		CUSTOMER		SHEET NUMBER					
SEE CHART		GENERAL		1 OF 3					
THIRD ANGLE PROJECTION		DRAWING		SERIES					
		A3-SIZE		505070					
DRAFT WHERE APPLICABLE MUST REMAIN WITHIN DIMENSIONS									





24	29.4	25.4	12.63	505070-6422	---	---	64
			11.93	505070-6022	---	---	60
			10.88	505070-5422	○	---	54
			10.18	505070-5022	○	---	50
			9.83	505070-4822	○	---	48
			9.48	505070-4622	---	---	46
			8.78	505070-4222	○	---	42
			8.43	505070-4022	○	---	40
			7.38	505070-3422	○	---	34
キャリアテープ幅 CARRIER TAPE WIDTH	C	B	(A)	MATERIAL No.	HIGH VOL TOOL	LOW VOL TOOL	CIRCUIT
SAMPLE PREPARATION							

THIS DRAWING CONTAINS INFORMATION THAT IS PROPRIETARY TO MOLEX ELECTRONIC TECHNOLOGIES, LLC AND SHOULD NOT BE USED WITHOUT WRITTEN PERMISSION

DIMENSION UNITS	SCALE
mm	2:1
GENERAL TOLERANCES (UNLESS SPECIFIED)	
ANGULAR TOL	± 1.0 °
4 PLACES	± 0.01
3 PLACES	± 0.03
2 PLACES	± 0.05
1 PLACE	± 0.1
0 PLACES	± 0.2
DRAFT WHERE APPLICABLE MUST REMAIN WITHIN DIMENSIONS	

CURRENT REV DESC: RELEASED

EC NO: 612826  
DRWN: GSHARMA 2019/02/22  
CHK'D: MSASAO 2019/02/27  
APPR: MSASAO 2019/02/27

INITIAL REVISION:  
DRWN: TNISHIDA02 2017/03/28  
APPR: TKUSUHARA01 2017/04/03

THIRD ANGLE PROJECTION

DRAWING  
A3-SIZE

SERIES  
505070

MATERIAL NUMBER  
SEE CHART

CUSTOMER  
GENERAL

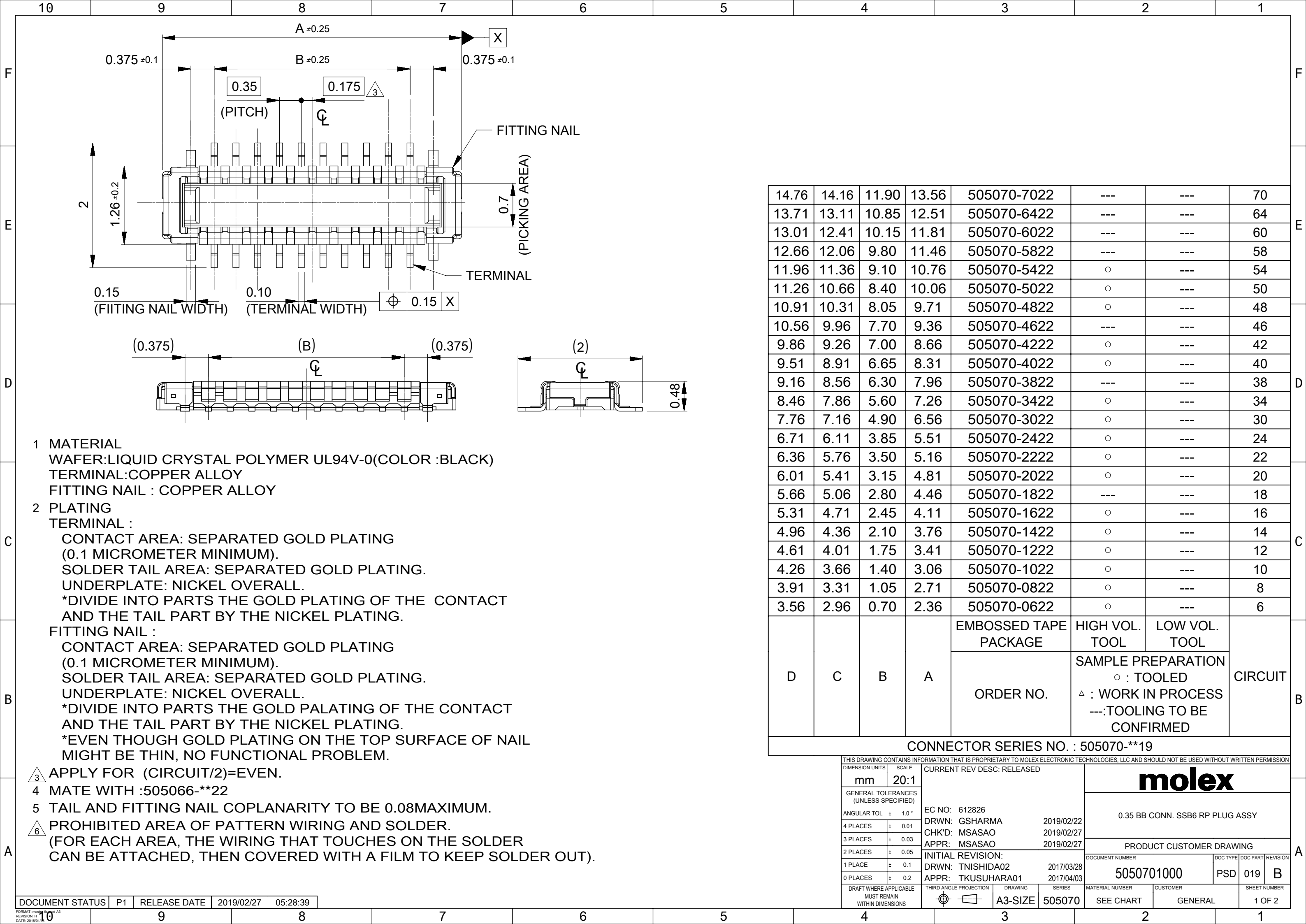
SHEET NUMBER  
3 OF 3

**molex**

0.35 BB CONN. H=0.6 SSB6 RP PLUG ASSY

PRODUCT CUSTOMER DRAWING

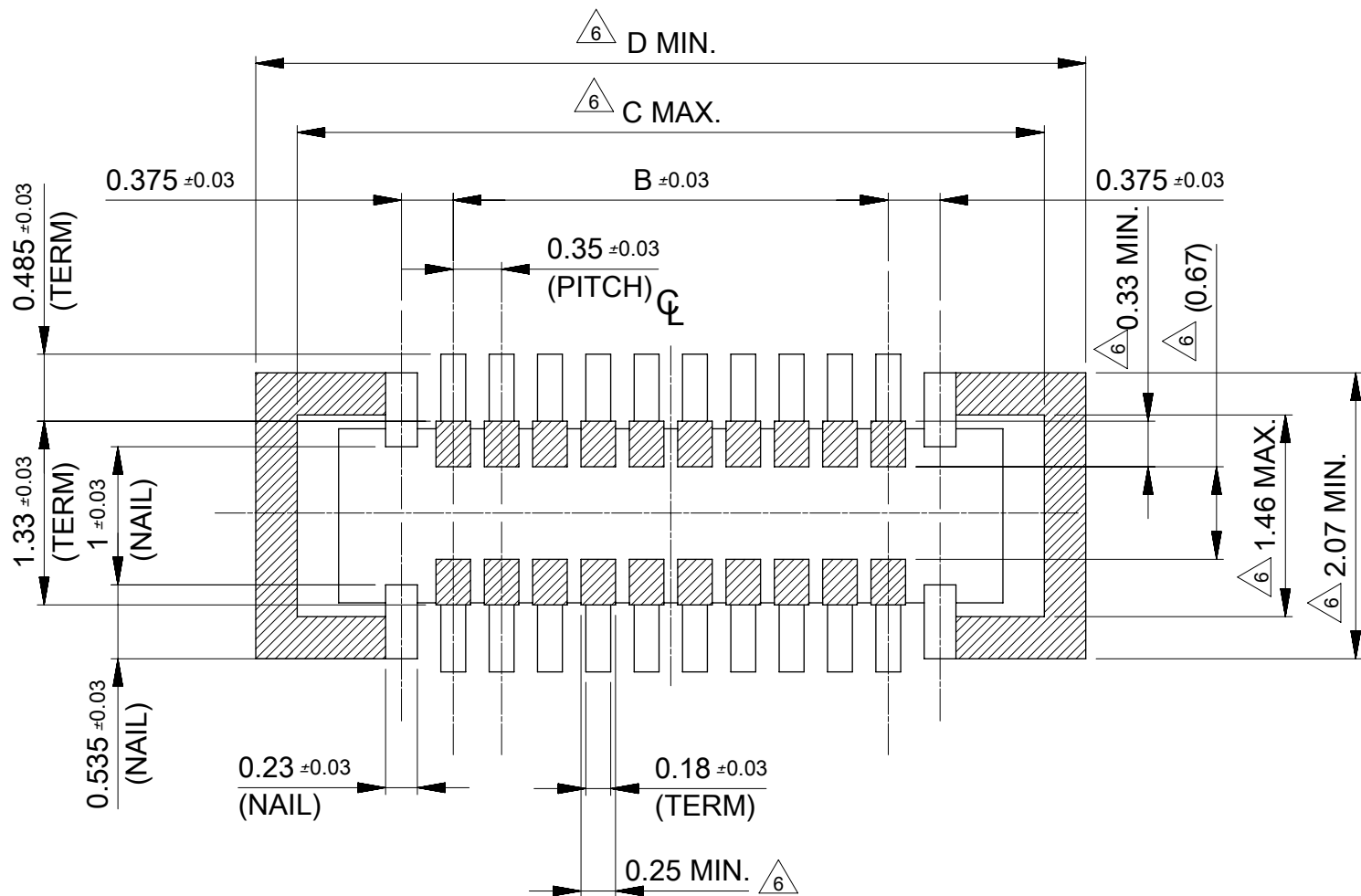
DOCUMENT NUMBER	DOC TYPE	DOC PART	REVISION
50507000000	PSD	007	B



- 1 MATERIAL
- WAFER:LIQUID CRYSTAL POLYMER UL94V-0(COLOR :BLACK)
- TERMINAL:COPPER ALLOY
- FITTING NAIL : COPPER ALLOY
- 2 PLATING
- TERMINAL :
- CONTACT AREA: SEPARATED GOLD PLATING
- (0.1 MICROMETER MINIMUM).
- SOLDER TAIL AREA: SEPARATED GOLD PLATING.
- UNDERPLATE: NICKEL OVERALL.
- \*DIVIDE INTO PARTS THE GOLD PLATING OF THE CONTACT
- AND THE TAIL PART BY THE NICKEL PLATING.
- FITTING NAIL :
- CONTACT AREA: SEPARATED GOLD PLATING
- (0.1 MICROMETER MINIMUM).
- SOLDER TAIL AREA: SEPARATED GOLD PLATING.
- UNDERPLATE: NICKEL OVERALL.
- \*DIVIDE INTO PARTS THE GOLD PALATING OF THE CONTACT
- AND THE TAIL PART BY THE NICKEL PLATING.
- \*EVEN THOUGH GOLD PLATING ON THE TOP SURFACE OF NAIL
- MIGHT BE THIN, NO FUNCTIONAL PROBLEM.
- △<sub>3</sub> APPLY FOR (CIRCUIT/2)=EVEN.
- 4 MATE WITH :505066-\*\*22
- 5 TAIL AND FITTING NAIL COPLANARITY TO BE 0.08MAXIMUM.
- △<sub>6</sub> PROHIBITED AREA OF PATTERN WIRING AND SOLDER.
- (FOR EACH AREA, THE WIRING THAT TOUCHES ON THE SOLDER
- CAN BE ATTACHED, THEN COVERED WITH A FILM TO KEEP SOLDER OUT).

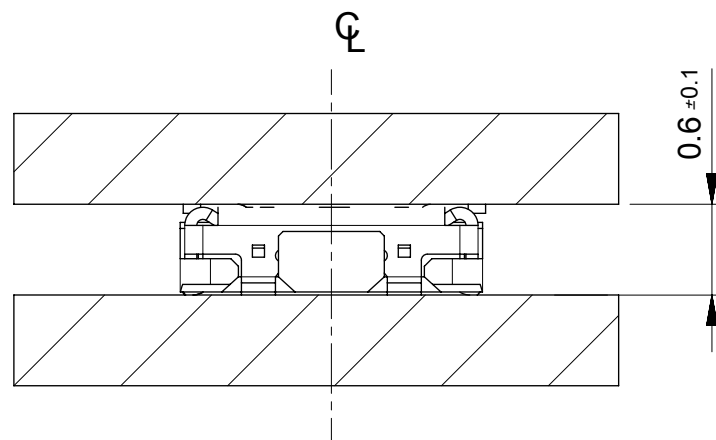
14.76	14.16	11.90	13.56	505070-7022	---	---	70
13.71	13.11	10.85	12.51	505070-6422	---	---	64
13.01	12.41	10.15	11.81	505070-6022	---	---	60
12.66	12.06	9.80	11.46	505070-5822	---	---	58
11.96	11.36	9.10	10.76	505070-5422	○	---	54
11.26	10.66	8.40	10.06	505070-5022	○	---	50
10.91	10.31	8.05	9.71	505070-4822	○	---	48
10.56	9.96	7.70	9.36	505070-4622	---	---	46
9.86	9.26	7.00	8.66	505070-4222	○	---	42
9.51	8.91	6.65	8.31	505070-4022	○	---	40
9.16	8.56	6.30	7.96	505070-3822	---	---	38
8.46	7.86	5.60	7.26	505070-3422	○	---	34
7.76	7.16	4.90	6.56	505070-3022	○	---	30
6.71	6.11	3.85	5.51	505070-2422	○	---	24
6.36	5.76	3.50	5.16	505070-2222	○	---	22
6.01	5.41	3.15	4.81	505070-2022	○	---	20
5.66	5.06	2.80	4.46	505070-1822	---	---	18
5.31	4.71	2.45	4.11	505070-1622	○	---	16
4.96	4.36	2.10	3.76	505070-1422	○	---	14
4.61	4.01	1.75	3.41	505070-1222	○	---	12
4.26	3.66	1.40	3.06	505070-1022	○	---	10
3.91	3.31	1.05	2.71	505070-0822	○	---	8
3.56	2.96	0.70	2.36	505070-0622	○	---	6
D	C	B	A	EMBOSSED TAPE PACKAGE	HIGH VOL. TOOL	LOW VOL. TOOL	CIRCUIT
				ORDER NO.	SAMPLE PREPARATION ○ : TOOLED △ : WORK IN PROCESS ---:TOOLING TO BE CONFIRMED		
CONNECTOR SERIES NO. : 505070-**19							

THIS DRAWING CONTAINS INFORMATION THAT IS PROPRIETARY TO MOLEX ELECTRONIC TECHNOLOGIES, LLC AND SHOULD NOT BE USED WITHOUT WRITTEN PERMISSION		CURRENT REV DESC: RELEASED		<b>molex</b>			
GENERAL TOLERANCES (UNLESS SPECIFIED)		EC NO: 612826		0.35 BB CONN. SSB6 RP PLUG ASSY			
ANGULAR TOL ± 1.0 °		DRWN: GSHARMA 2019/02/22		PRODUCT CUSTOMER DRAWING			
4 PLACES ± 0.01		CHK'D: MSASAO 2019/02/27		DOCUMENT NUMBER			
3 PLACES ± 0.03		APPR: MSASAO 2019/02/27		5050701000			
2 PLACES ± 0.05		INITIAL REVISION:		DOC TYPE DOC PART REVISION			
1 PLACE ± 0.1		DRWN: TNISHIDA02 2017/03/28		PSD 019 B			
0 PLACES ± 0.2		APPR: TKUSUHARA01 2017/04/03		SHEET NUMBER			
DRAFT WHERE APPLICABLE MUST REMAIN WITHIN DIMENSIONS		THIRD ANGLE PROJECTION		MATERIAL NUMBER		CUSTOMER	
		DRAWING		SEE CHART		GENERAL	
		SERIES		A3-SIZE		505070	
						1 OF 2	

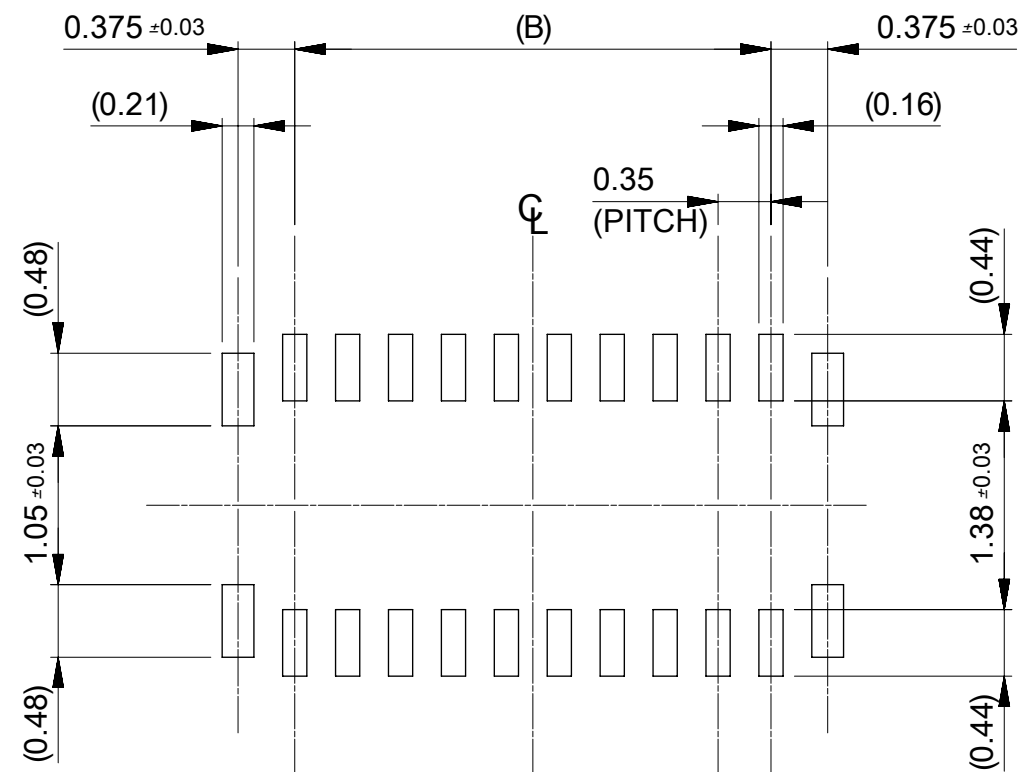


#### RECOMMENDED P.W.BOARD PATTERN LAYOUT(REFERENCE)

$\triangle 6$  PROHIBITED AREA OF PATTERN WIRING AND SOLDER.  
(FOR EACH AREA, THE WIRING THAT TOUCHES ON THE SOLDER  
CAN BE ATTACHED, THEN COVERED WITH A FILM TO KEEP SOLDER OUT.)



MATED CONDITION



#### RECOMMENDED METAL MASK LAYOUT(REFERENCE)

RECOMMENDED THICKNESS OF METAL MASK :  $t=0.08\text{mm}$   
RECOMMENDED OPEN APERTURE RATIO OF METAL MASK : 80%

THIS DRAWING CONTAINS INFORMATION THAT IS PROPRIETARY TO MOLEX ELECTRONIC TECHNOLOGIES, LLC AND SHOULD NOT BE USED WITHOUT WRITTEN PERMISSION															
DIMENSION UNITS		SCALE		CURRENT REV DESC: RELEASED			<div>molex</div> <div>0.35 BB CONN. SSB6 RP PLUG ASSY</div> <div>PRODUCT CUSTOMER DRAWING</div>								
mm		20:1													
GENERAL TOLERANCES (UNLESS SPECIFIED)				EC NO: 612826						DOCUMENT NUMBER 5050701000 DOC TYPE PSD DOC PART 019 REVISION B					
ANGULAR TOL		± 1.0 °		DRWN: GSHARMA 2019/02/22											
4 PLACES		± 0.01		CHK'D: MSASAO 2019/02/27											
3 PLACES		± 0.03		APPR: MSASAO 2019/02/27											
2 PLACES		± 0.05		INITIAL REVISION:											
1 PLACE		± 0.1		DRWN: TNISHIDA02 2017/03/28			SHEET NUMBER 2 OF 2								
0 PLACES		± 0.2		APPR: TKUSUHARA01 2017/04/03											
DRAFT WHERE APPLICABLE MUST REMAIN WITHIN DIMENSIONS				THIRD ANGLE PROJECTION		DRAWING		SERIES		MATERIAL NUMBER		CUSTOMER		SHEET NUMBER	
						A3-SIZE		505070		SEE CHART		GENERAL			