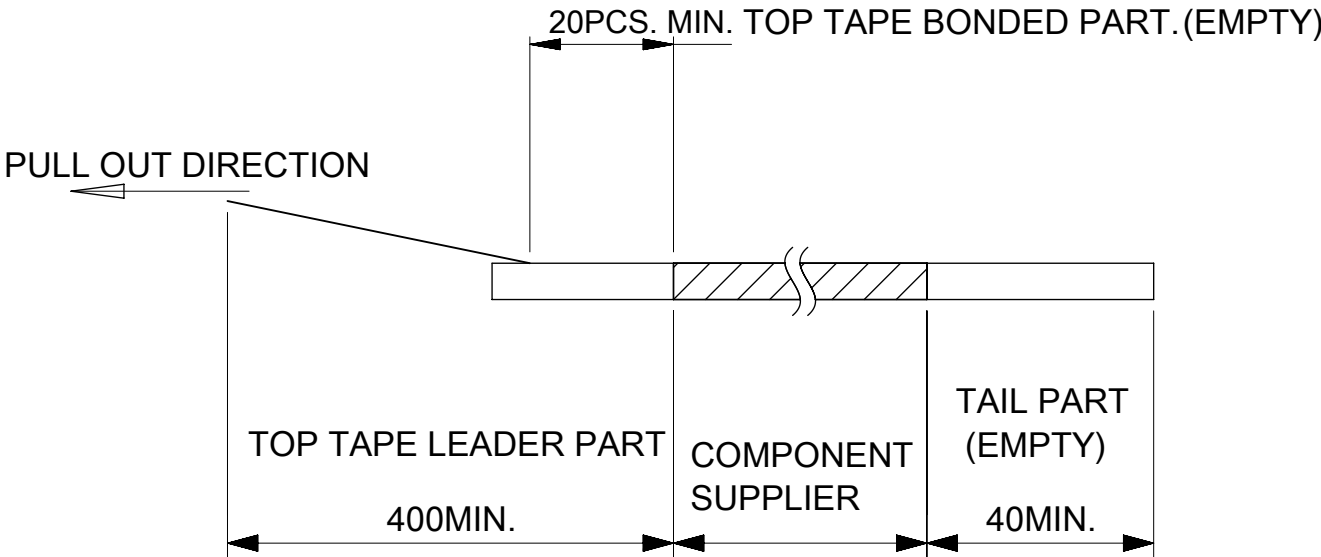


NOTES

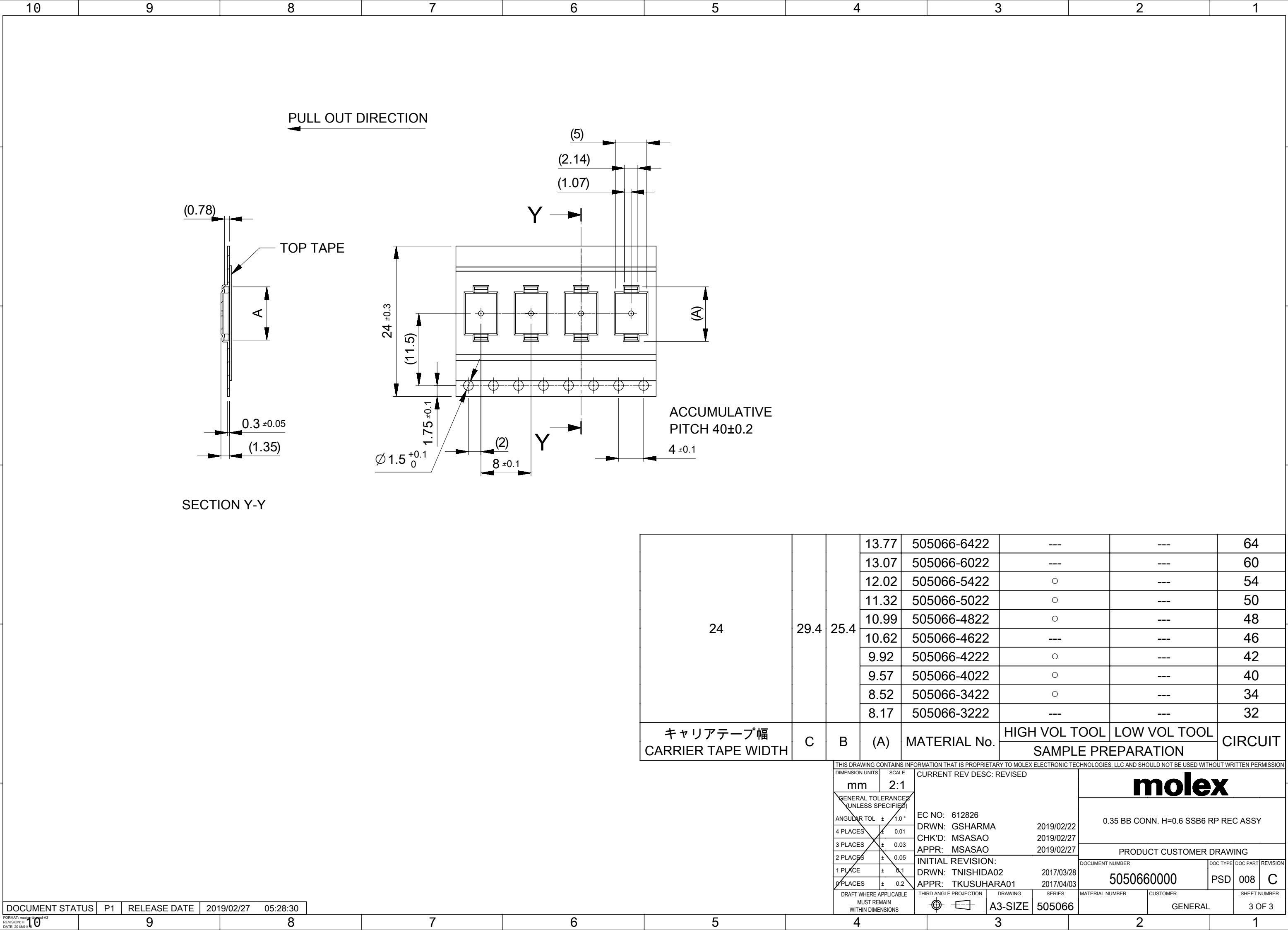
1. RE DETAILED DIMENSION, SEE PRODUCT DRAWING.
2. NUMBER OF CONNECTORS : 8000 PCS/REEL.
3. LEAD TAPE LENGTH.

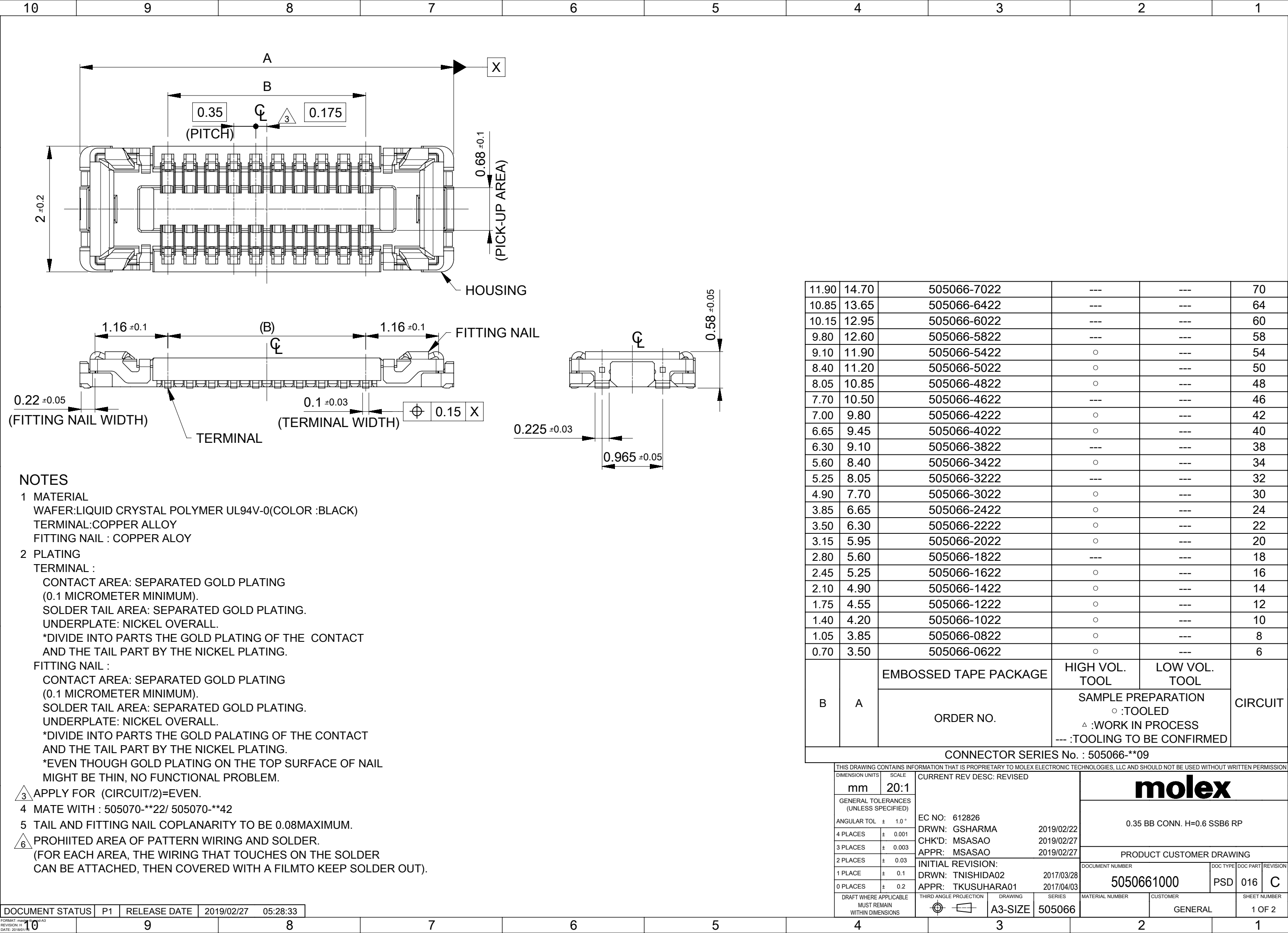


4. TOP TAPE PEEL FORCE IS DEFINED BY IEC60286-3
5. MATERIAL
CARRER TAPE :POLYSTYRENE
TOP TAPE :PET , OTHER
REEL :POLYSTYRENE(PS)(RECYCLE MATERIAL CONTAINED)

MODEL NO. 505066-**22

THIS DRAWING CONTAINS INFORMATION THAT IS PROPRIETARY TO MOLEX ELECTRONIC TECHNOLOGIES, LLC AND SHOULD NOT BE USED WITHOUT WRITTEN PERMISSION		CURRENT REV DESC: REVISED		molex		
DIMENSION UNITS		SCALE		0.35 BB CONN. H=0.6 SSB6 RP REC ASSY		
mm		1:5		PRODUCT CUSTOMER DRAWING		
GENERAL TOLERANCES (UNLESS SPECIFIED)		EC NO: 612826		DOCUMENT NUMBER		
ANGULAR TOL		DRWN: GSHARMA 2019/02/22		5050660000		
4 PLACES		CHK'D: MSASAO 2019/02/27		DOC TYPE		
3 PLACES		APPR: MSASAO 2019/02/27		PSD		
2 PLACES		INITIAL REVISION:		DOC PART		
1 PLACE		DRWN: TNISHIDA02 2017/03/28		008		
0 PLACES		APPR: TKUSUHARA01 2017/04/03		C		
DRAFT WHERE APPLICABLE MUST REMAIN WITHIN DIMENSIONS		THIRD ANGLE PROJECTION		REVISION		
		DRAWING		MATERIAL NUMBER		
		A3-SIZE		CUSTOMER		
		SERIES		GENERAL		
		505066		SHEET NUMBER		
				1 OF 3		



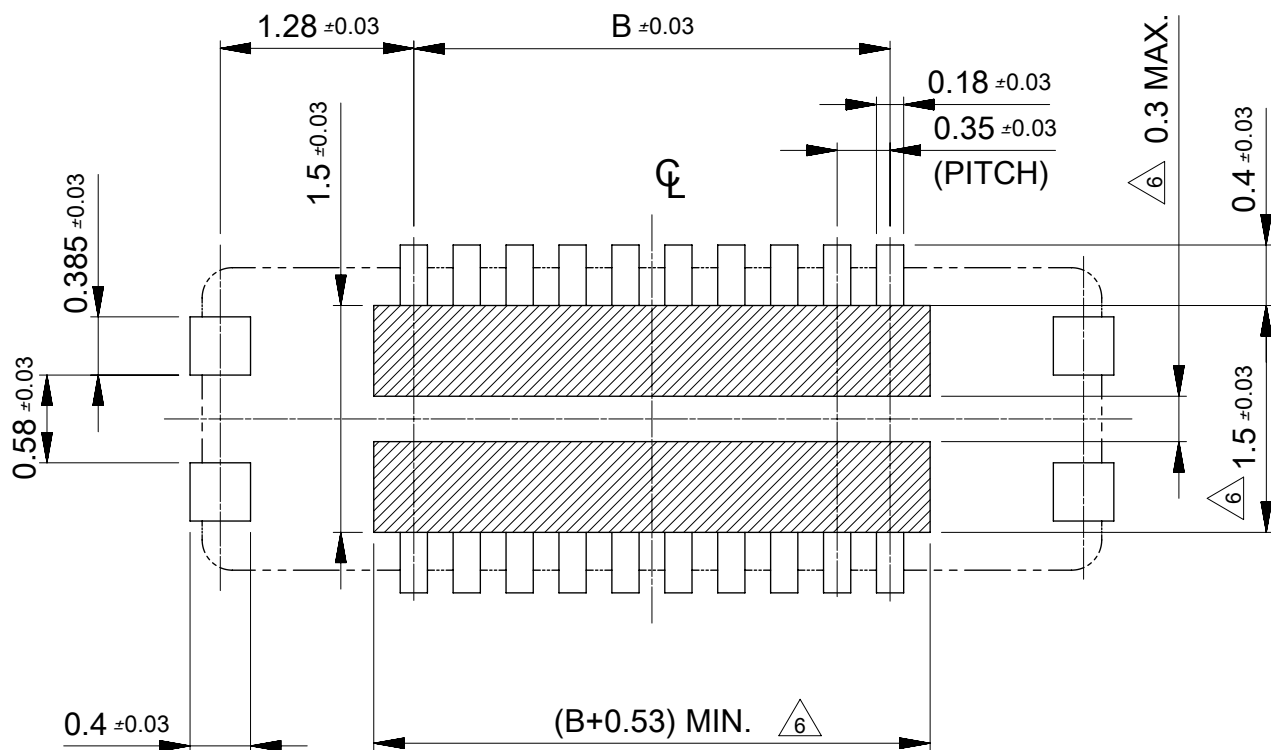


11.90	14.70	505066-7022	---	---	70
10.85	13.65	505066-6422	---	---	64
10.15	12.95	505066-6022	---	---	60
9.80	12.60	505066-5822	---	---	58
9.10	11.90	505066-5422	○	---	54
8.40	11.20	505066-5022	○	---	50
8.05	10.85	505066-4822	○	---	48
7.70	10.50	505066-4622	---	---	46
7.00	9.80	505066-4222	○	---	42
6.65	9.45	505066-4022	○	---	40
6.30	9.10	505066-3822	---	---	38
5.60	8.40	505066-3422	○	---	34
5.25	8.05	505066-3222	---	---	32
4.90	7.70	505066-3022	○	---	30
3.85	6.65	505066-2422	○	---	24
3.50	6.30	505066-2222	○	---	22
3.15	5.95	505066-2022	○	---	20
2.80	5.60	505066-1822	---	---	18
2.45	5.25	505066-1622	○	---	16
2.10	4.90	505066-1422	○	---	14
1.75	4.55	505066-1222	○	---	12
1.40	4.20	505066-1022	○	---	10
1.05	3.85	505066-0822	○	---	8
0.70	3.50	505066-0622	○	---	6
B	A	EMBOSSED TAPE PACKAGE	HIGH VOL. TOOL	LOW VOL. TOOL	CIRCUIT
		ORDER NO.	SAMPLE PREPARATION ○ :TOOLED △ :WORK IN PROCESS --- :TOOLING TO BE CONFIRMED		

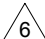
CONNECTOR SERIES No. : 505066-**09

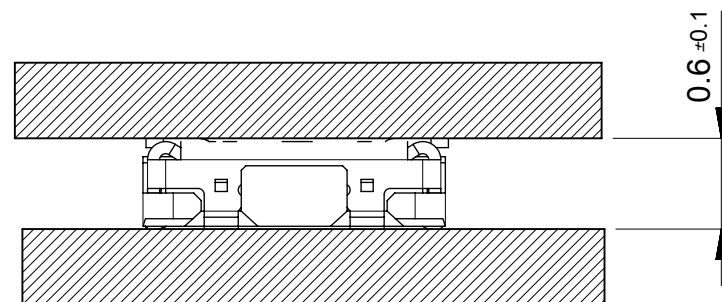
THIS DRAWING CONTAINS INFORMATION THAT IS PROPRIETARY TO MOLEX ELECTRONIC TECHNOLOGIES, LLC AND SHOULD NOT BE USED WITHOUT WRITTEN PERMISSION															
DIMENSION UNITS		SCALE		CURRENT REV DESC: REVISED			<div>molex</div>								
mm		20:1													
GENERAL TOLERANCES (UNLESS SPECIFIED)				EC NO: 612826 DRWN: GSHARMA 2019/02/22 CHK'D: MSASAO 2019/02/27 APPR: MSASAO 2019/02/27			0.35 BB CONN. H=0.6 SSB6 RP								
ANGULAR TOL ± 1.0 °															
4 PLACES		± 0.001													
3 PLACES		± 0.003													
2 PLACES		± 0.03													
1 PLACE		± 0.1		INITIAL REVISION: DRWN: TNISHIDA02 2017/03/28 APPR: TKUSUHAORA01 2017/04/03			PRODUCT CUSTOMER DRAWING								
0 PLACES		± 0.2													
DRAFT WHERE APPLICABLE MUST REMAIN WITHIN DIMENSIONS															
THIRD ANGLE PROJECTION			DRAWING							SERIES	DOCUMENT NUMBER		DOC TYPE	DOC PART	REVISION
										A3-SIZE	505066	5050661000		PSD	016
						MATERIAL NUMBER		CUSTOMER		SHEET NUMBER					
								GENERAL		1 OF 2					

DOCUMENT STATUS	P1	RELEASE DATE	2019/02/27	05:28:33
-----------------	----	--------------	------------	----------

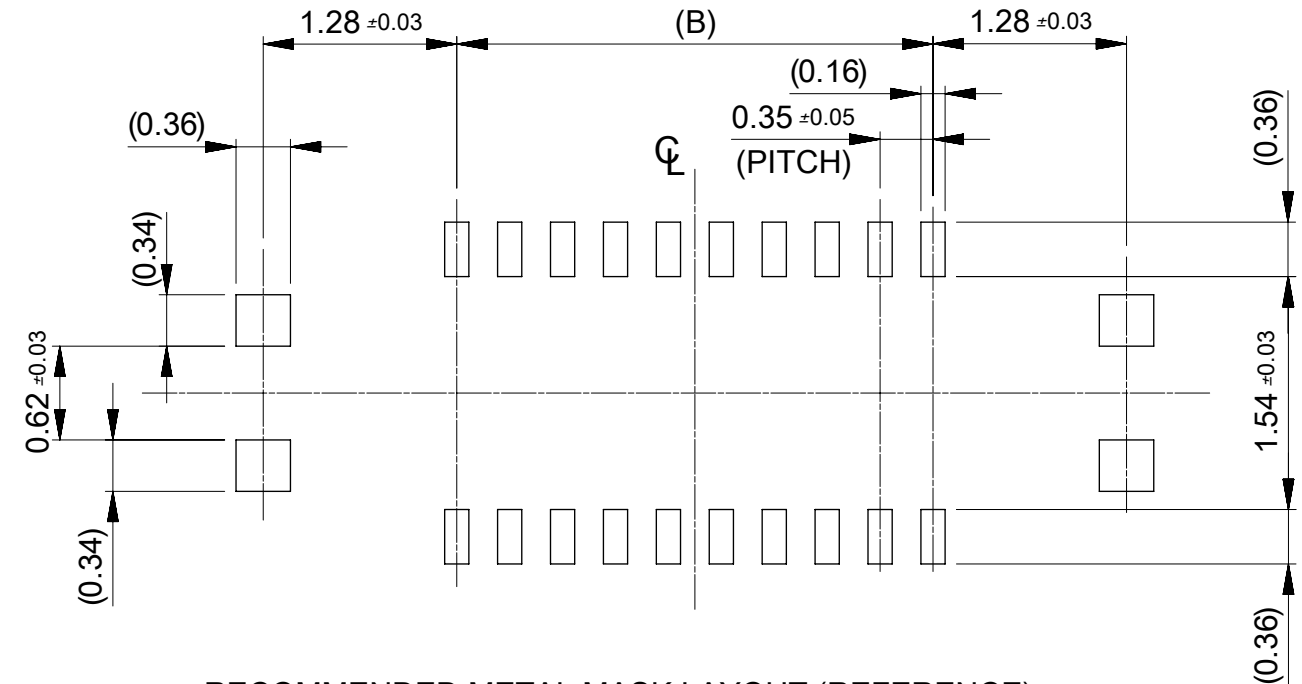


RECOMMENDED P.W.BOARD PATTERN LAYOUT (REFERENCE)

 PROHIBITED AREA OF PATTERN WIRING AND SOLDER
(FOR EACH AREA, THE WIRING THAT TOUCHES ON THE SOLDER
CAN BE ATTACHED, THEN COVERED WITH A FILM TO KEEP SOLDER OUT)



MATED CONDITION



RECOMMENDED METAL MASK LAYOUT (REFERENCE)

RECOMMENDED THICKNESS OF METAL MASK : $t=0.08\text{mm}$

RECEMMENDED OPEN APERTURE RATIO OF METAL MASK : 80%

THIS DRAWING CONTAINS INFORMATION THAT IS PROPRIETARY TO MOLEX ELECTRONIC TECHNOLOGIES, LLC AND SHOULD NOT BE USED WITHOUT WRITTEN PERMISSION									
DIMENSION UNITS		SCALE		CURRENT REV DESC: REVISED				<div>molex</div>	
mm		20:1							
GENERAL TOLERANCES (UNLESS SPECIFIED)				0.35 BB CONN. H=0.6 SSB6 RP					
ANGULAR TOL ± 1.0°									
4 PLACES ± 0.001									
3 PLACES ± 0.003				PRODUCT CUSTOMER DRAWING					
2 PLACES ± 0.03									
1 PLACE ± 0.1				DOCUMENT NUMBER <div>5050661000</div> DOC TYPE <div>PSD</div> DOC PART <div>016</div> REVISION <div>C</div>					
0 PLACES ± 0.2									
DRAFT WHERE APPLICABLE MUST REMAIN WITHIN DIMENSIONS				INITIAL REVISION:					
				DRWN: TNISHIDA022017/03/28					
				APPR: TKUSUHARA012017/04/03					
				THIRD ANGLE PROJECTION					
				DRAWING		SERIES		MATERIAL NUMBER	
				A3-SIZE		505066		CUSTOMER	
								GENERAL	
								SHEET NUMBER	
								2 OF 2	