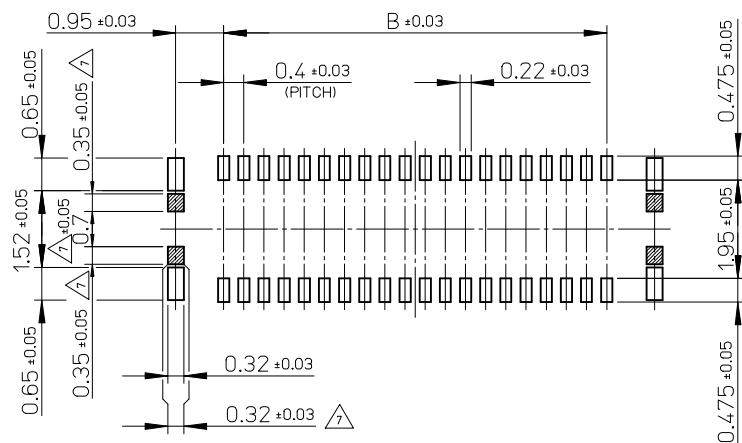


10.0	17.5	15.6	19.1	502426-8030	80
	15.5	13.6	17.1	502426-7030	70
7.0	13.5	11.6	15.1	502426-6030	60
	11.5	9.6	13.1	502426-5030	50
4.0	9.5	7.6	11.1	502426-4030	40
	7.9	6.0	9.5	502426-3230	32
	7.5	5.6	9.1	502426-3030	30
3.4	6.7	4.8	8.3	502426-2630	26
	6.3	4.4	7.9	502426-2430	24
	5.9	4.0	7.5	502426-2230	22
	5.5	3.6	7.1	502426-2030	20
2.4	4.3	2.4	5.9	502426-1430	14
D	C	B	A	EMBOSSD TAPE PACKAGE ORDER No.	CKT.

CONNECTOR SERIES No. : 502426-**39

REVISED EC NO: J2015-0198 DRWN:TKOGA01 CHKD: APPR:KMORIKAWA	2014/07/16 2014/08/07	DESCRIPTION	GENERAL TOLERANCES (UNLESS SPECIFIED)		DIMENSION STYLE MM ONLY		SCALE 10:1	DESIGN UNITS METRIC	THIRD ANGLE PROJECTION	
			10 UNDER ± ---		DRAWN BY RTAKEUCHI		DATE 2007/12/26		TITLE 0.4 B-TO-B CONN. HGT=1.0 W=2.6 REC ASSY WITH TAPE	
			10 OVER 30 UNDER ± ---		CHECKED BY MSASAO		DATE 2007/12/26			
			30 OVER ± ---		APPROVED BY MSASAO		DATE 2007/12/26			
			ANGULAR ± --- °		MATERIAL NO.		DOCUMENT NO. SD-502426-003			
			DRAFT WHERE APPLICABLE MUST REMAIN WITHIN DIMENSIONS		SEE TABLE					
					SIZE A3		THIS DRAWING CONTAINS INFORMATION THAT IS PROPRIETARY TO MOLEX INCORPORATED AND SHOULD NOT BE USED WITHOUT WRITTEN PERMISSION			



P.C. BOARD PATTERN LAYOUT
(REFERENCE)

注記 NOTES

1. 使用材料 MATERIAL

ハウジング：液晶ポリマー（ LCP ） ガラス充填 UL94V-0（黒）
HOUSING: LIQUID CRYSTAL POLYMER (GLASS FILLED) UL94V-0 (COLOR: BLACK)

ターミナル：りん青銅（ $t=0.1$ ）
TERMINAL：PHOSPHOR BRONZE（ $t=0.1$ ）

金具：りん青銅（ $t=0.12$ ）
FITTING NAIL：PHOSPHOR BRONZE（ $t=0.12$ ）

吸着テープ：ポリイミド
VACUUM TAPE：POLYIMIDE

2. メッキ仕様 PLATING

ターミナル TERMINAL

コンタクト部：金メッキ 0.1 マイクロメートル以上
CONTACT AREA：GOLD 0.1 MICROMETER MINIMUM.

テール部：金メッキ 0.05 マイクロメートル以上
TAIL AREA：GOLD 0.05 MICROMETER MINIMUM.

下地メッキ：ニッケルメッキ 1.0 マイクロメートル以上
UNDER PLATING：NICKEL 1.0 MICROMETER MINIMUM

※コンタクト部とテール部はニッケルメッキによって分断されている金メッキです。
DIVIDE INTO PARTS THE GOLD PLATING OF THE CONTACT
AND THE TAIL PART BY THE NICKEL PLATING.

※封孔処理品

金具 FITTING NAIL

フラッシュ金メッキ

FLASH Au PLATING

下地メッキ：ニッケルメッキ 1.0 マイクロメートル以上
UNDER PLATING：NICKEL 1.0 MICROMETER MINIMUM

△₃（全極数／2）＝偶数の場合に適用。
APPLY FOR (CIRCUIT/2)=EVEN.

4. 嵌合相手： 502430 シリーズ
MATE WITH：502430 SERIES.

5. テール平坦度は、0.08 以下

テール及び金具の平坦度は、0.1 以下

TAIL COPLANARITY TO BE 0.08 MAXIMUM.

TAIL AND FITTING NAIL COPLANARITY TO BE 0.1 MAXIMUM.

6. ELV 及び RoHS 適合品

ELV AND RoHS COMPLIANT.

△₇ 斜線部はパターン書込み禁止範囲と半田禁止範囲を示す。

ただし、斜線部に補強金具と同一配線を配置する場合はレジストを施し、この部分に半田は無きこと。
NO PATTERN CIRCUIT AND NO SOLDER ALLOWED IN THE SHADED AREA.

HOWEVER, IF NEEDED TO ADD A TRACE OF THE SAME CIRCUIT, PUT THE SOLDER-RESIST,
YET NO SOLDER ALLOWED IN THE AREA.

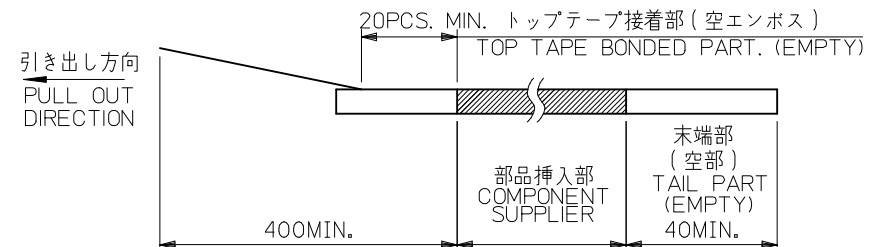
REVISED EC NO: J2015-0198 DRWN:TKOGA01 CHKD: APPR:KMORI KAWA	2014/07/16 2014/08/07	DESCRIPTION	GENERAL TOLERANCES (UNLESS SPECIFIED)		DIMENSION STYLE MM ONLY		SCALE 10:1	DESIGN UNITS METRIC	THIRD ANGLE PROJECTION					
			10 UNDER	± ---	DRAWN BY RTAKEUCHI	DATE 2007/12/26	TITLE 0.4 B-TO-B CONN. HGT=1.0 W=2.6 REC ASSY WITH TAPE							
			10 OVER 30 UNDER	± ---	CHECKED BY MSASAO	DATE 2007/12/26								
			30 OVER	± ---	APPROVED BY MSASAO	DATE 2007/12/26								
			ANGULAR ± --- °		MATERIAL NO.		DOCUMENT NO. molex SD-502426-003							
			DRAFT WHERE APPLICABLE MUST REMAIN WITHIN DIMENSIONS		SEE SHEET 1						SHEET NO. 2 OF 2			
REV			THIS DRAWING CONTAINS INFORMATION THAT IS PROPRIETARY TO MOLEX INCORPORATED AND SHOULD NOT BE USED WITHOUT WRITTEN PERMISSION											

molex

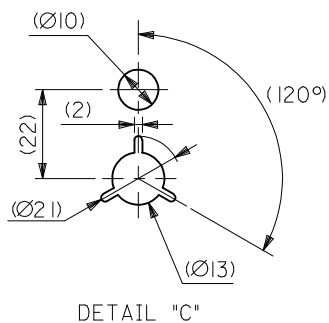
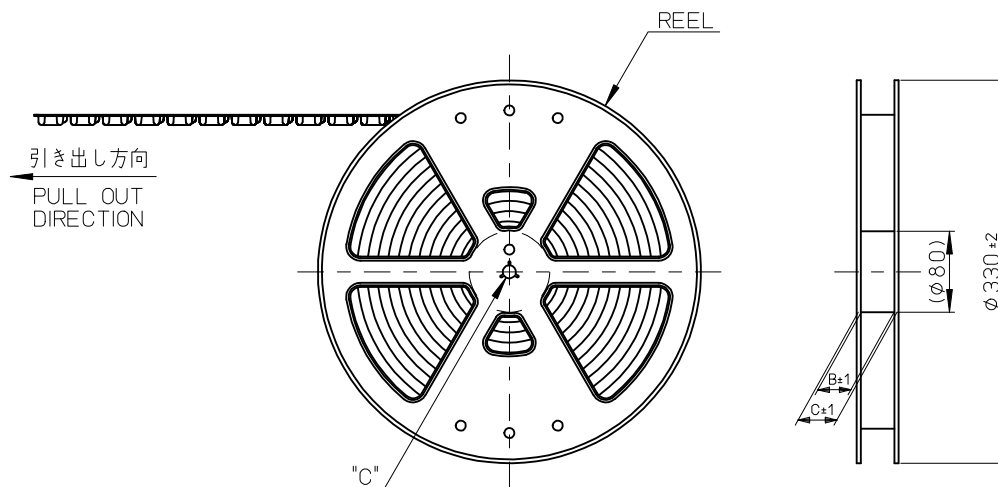
SHEET NO.
2 OF 2

注記 NOTES

- 製品詳細寸法については製品単体図面を参照下さい。
RE DETAILED DIMENSION, SEE PRODUCT DRAWING.
- 梱包数量 : 3000 個/リール
NUMBER OF CONNECTORS : 3000PCS/REEL
- リードテープ長さ LEAD TAPE LENGTH



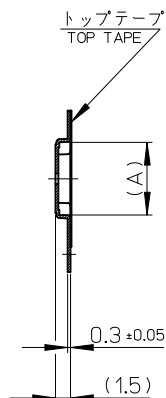
- 材料 MATERIAL
キャリアテープ (CARRIER TAPE) : ポリスチレン (POLYSTYRENE)
トップテープ (TOP TAPE) : PET , PE , PEF
リール (REEL) : ポリスチレン (PS) <リサイクル材を含む>
POLYSTYRENE (PS) <RECYCLE MATERIAL CONTAINED>
- ELV 及び RoHS適合品
ELV AND RoHS COMPLIANT



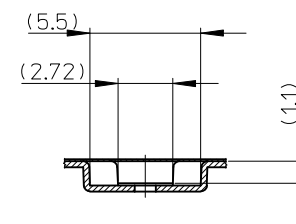
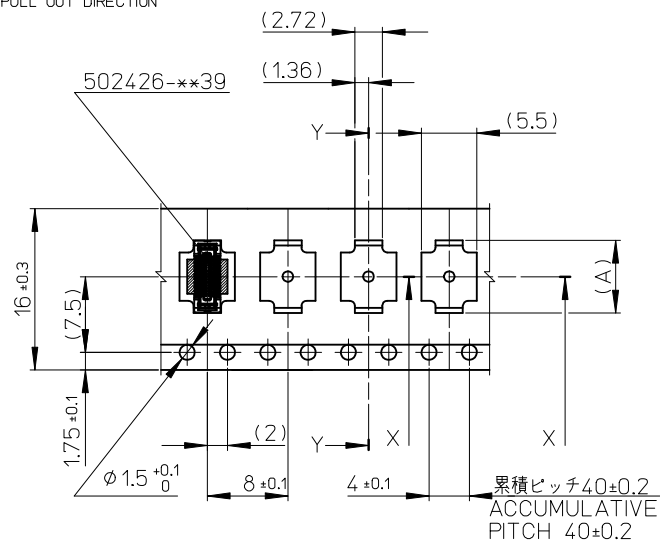
REVISED EC NO: J2015-0198 DRWN:TKOGA01 CHKD: APPR:KMORI KAWA 2014/07/16 2014/08/07	DESCRIPTION REV	GENERAL TOLERANCES (UNLESS SPECIFIED)		DIMENSION STYLE MM ONLY		SCALE ---	MODEL NO. 502426-**-30	THIRD ANGLE PROJECTION	
		10 UNDER ± ---		RTAKEUCHI 2007/12/26		TITLE 0.4 B-TO-B CONN. HGT=1.0 REC ASSY WITH TAPE EMBSTP PKG molex			
		10 OVER 30 UNDER ± ---		CHECKED BY 2007/12/26					
		30 OVER ± ---		APPROVED BY 2007/12/26					
		ANGULAR ± --- °		MATERIAL NO.					
		DRAFT WHERE APPLICABLE MUST REMAIN WITHIN DIMENSIONS		SEE TABLE		DOCUMENT NO. SD-502426-004			SHEET NO. 1 OF 4
				SIZE A3		THIS DRAWING CONTAINS INFORMATION THAT IS PROPRIETARY TO MOLEX INCORPORATED AND SHOULD NOT BE USED WITHOUT WRITTEN PERMISSION			

10 9 8 7 6 5 4 3 2 1

引き出し方向
PULL OUT DIRECTION




SECTION Y-Y

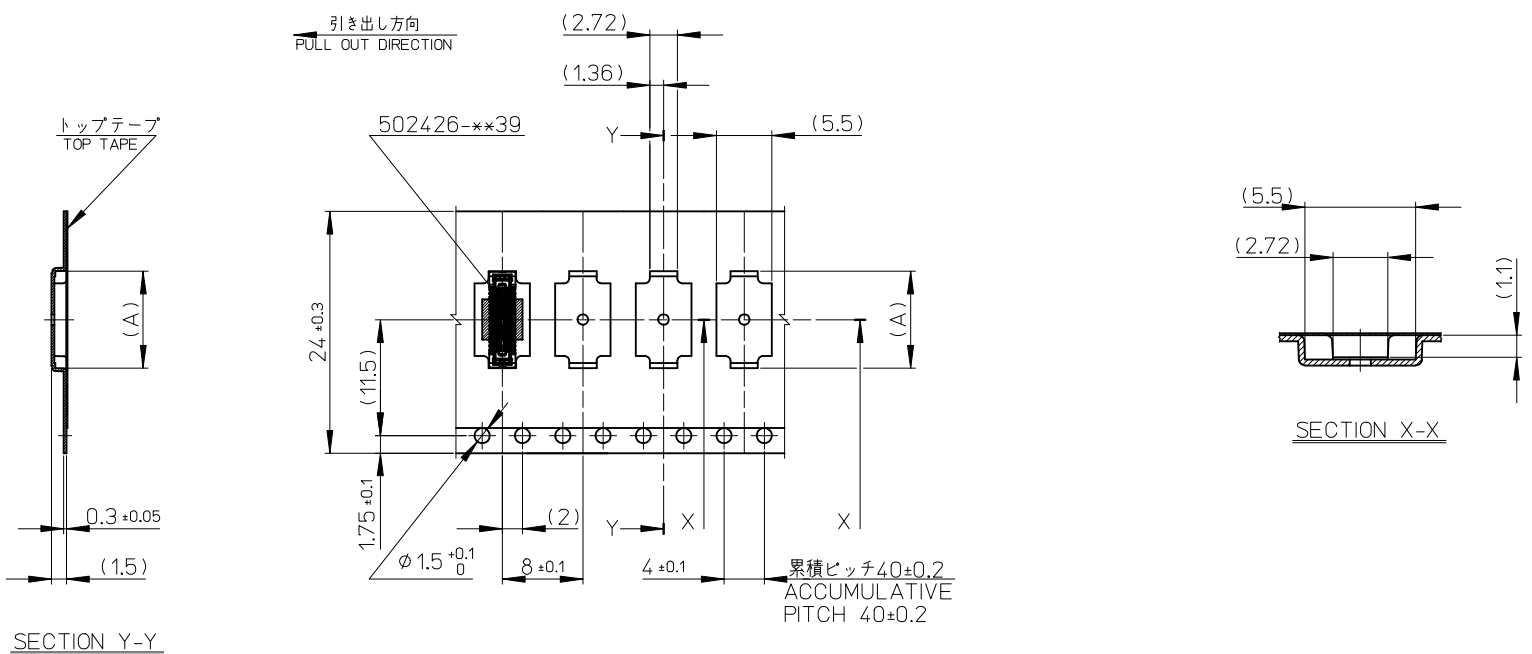


SECTION X-X

16mm 幅キャリアテープ
16mm WIDTH CARRIER TAPE

16	21.4	17.4	8.42	502426-2630		26
			8.02	502426-2430		24
			7.62	502426-2230		22
			7.22	502426-2030		20
			6.02	502426-1430		14
キャリアテープ幅 CARRIER TAPE WIDTH	C	B	(A)	MATERIAL No.		CKT.
				MODEL No.	502426-**-30	

REVISED EC NO: J2015-0198 DRWN: TKGA01 CHKD: APPR: KMORIKAWA 2014/07/16 2014/08/07	DESCRIPTION REV	GENERAL TOLERANCES (UNLESS SPECIFIED)		DIMENSION STYLE MM ONLY		SCALE ---	DESIGN UNITS METRIC	 THIRD ANGLE PROJECTION				
		10 UNDER	± ---	DRAWN BY RTAKEUCHI	DATE 2007/12/26	TITLE 0.4 B-TO-B CONN. HGT=1.0 REC ASSY WITH TAPE EMBSTP PKG						
		10 OVER 30 UNDER	± ---	CHECKED BY MSASAO	DATE 2007/12/26							
		30 OVER	± ---	APPROVED BY MSASAO	DATE 2007/12/26	molex						
		ANGULAR	± --- °	MATERIAL NO.					DOCUMENT NO.		SHEET NO.	
		DRAFT WHERE APPLICABLE MUST REMAIN WITHIN DIMENSIONS		SEE TABLE					SD-502426-004		2 OF 4	
				SIZE A3	THIS DRAWING CONTAINS INFORMATION THAT IS PROPRIETARY TO MOLEX INCORPORATED AND SHOULD NOT BE USED WITHOUT WRITTEN PERMISSION							



24mm 幅キャリアテープ
24mm WIDTH CARRIER TAPE

24	29.4	25.4	15.22	502426-6030		60
			13.22	502426-5030		50
			11.22	502426-4030		40
			9.62	502426-3230		32
			9.22	502426-3030		30
キャリアテープ幅 CARRIER TAPE WIDTH	C	B	(A)	MATERIAL No.		CKT.
				MODEL No.	502426-**30	

REVISED EC NO: J2015-0198 DRWN: TKOGA01 CHKD: APPR: KMORIKAWA 2014/07/16 2014/08/07	DESCRIPTION REV	GENERAL TOLERANCES (UNLESS SPECIFIED)		DIMENSION STYLE MM ONLY		SCALE ---	DESIGN UNITS METRIC	THIRD ANGLE PROJECTION			
		10 UNDER	± ---	DRAWN BY RTAKEUCHI	DATE 2007/12/26	TITLE 0.4 B-TO-B CONN. HGT=1.0 REC ASSY WITH TAPE EMBSTP PKG					
		10 OVER 30 UNDER	± ---	CHECKED BY MSASAO	DATE 2007/12/26						
		30 OVER	± ---	APPROVED BY MSASAO	DATE 2007/12/26	molex					
		ANGULAR	± --- °	MATERIAL NO.							
		DRAFT WHERE APPLICABLE MUST REMAIN WITHIN DIMENSIONS		SEE TABLE		DOCUMENT NO. SD-502426-004		SHEET NO. 3 OF 4			
				SIZE A3	THIS DRAWING CONTAINS INFORMATION THAT IS PROPRIETARY TO MOLEX INCORPORATED AND SHOULD NOT BE USED WITHOUT WRITTEN PERMISSION						

10

9

8

7

6

5

4

3

2

1

F

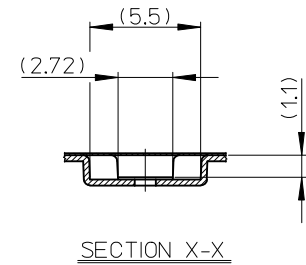
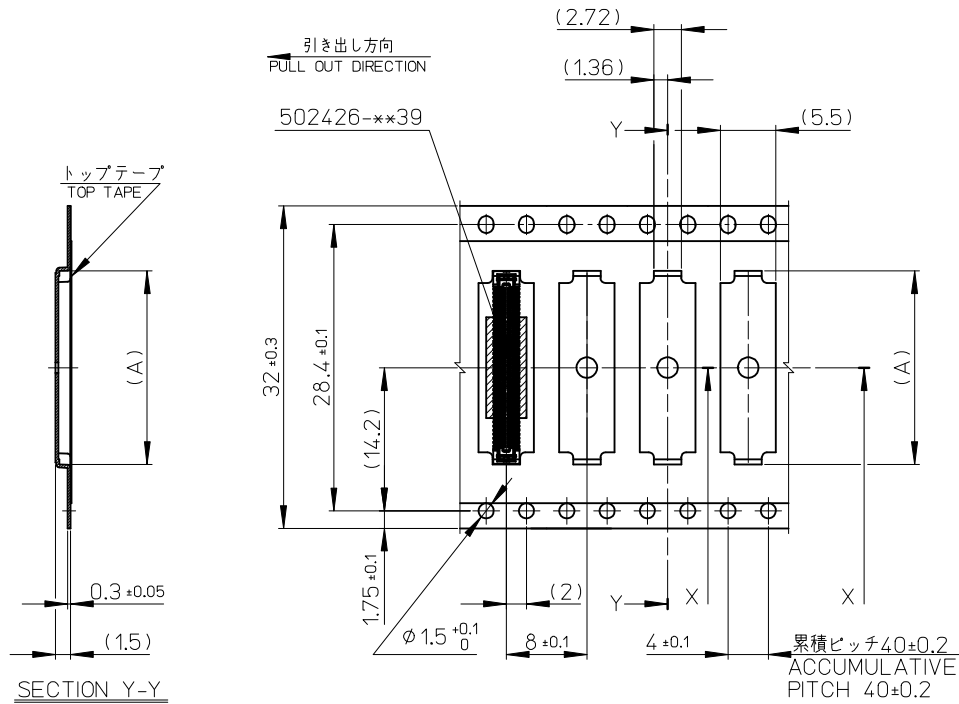
E

D

C

B

A



32	37.4	33.5	19.22	502426-8030	80
			17.22	502426-7030	70
キャリアテープ幅 CARRIER TAPE WIDTH		C	B	(A)	MATERIAL No.
					MODEL No.
					502426-**-30

REVISED EC NO: J2015-0198 DRWN:TKOGA01 CHKD: APPR:KMORIKAWA 2014/07/16 2014/08/07	DESCRIPTION REV	GENERAL TOLERANCES (UNLESS SPECIFIED)		DIMENSION STYLE MM ONLY		SCALE ---	DESIGN UNITS METRIC	THIRD ANGLE PROJECTION				
		10 UNDER ± ---		DRAWN BY DATE RTAKEUCHI 2007/12/26		TITLE 0.4 B-TO-B CONN. HGT=1.0 REC ASSY WITH TAPE EMBSTP PKG						
		10 OVER 30 UNDER ± ---		CHECKED BY DATE MSASAO 2007/12/26								
		30 OVER ± ---		APPROVED BY DATE MSASAO 2007/12/26		molex						
		ANGULAR ± --- °		MATERIAL NO.						DOCUMENT NO.		SHEET NO.
		DRAFT WHERE APPLICABLE MUST REMAIN WITHIN DIMENSIONS		SEE TABLE						SD-502426-004		4 OF 4
				SIZE A3		THIS DRAWING CONTAINS INFORMATION THAT IS PROPRIETARY TO MOLEX INCORPORATED AND SHOULD NOT BE USED WITHOUT WRITTEN PERMISSION						

9

8

7

6

5

4

3

2