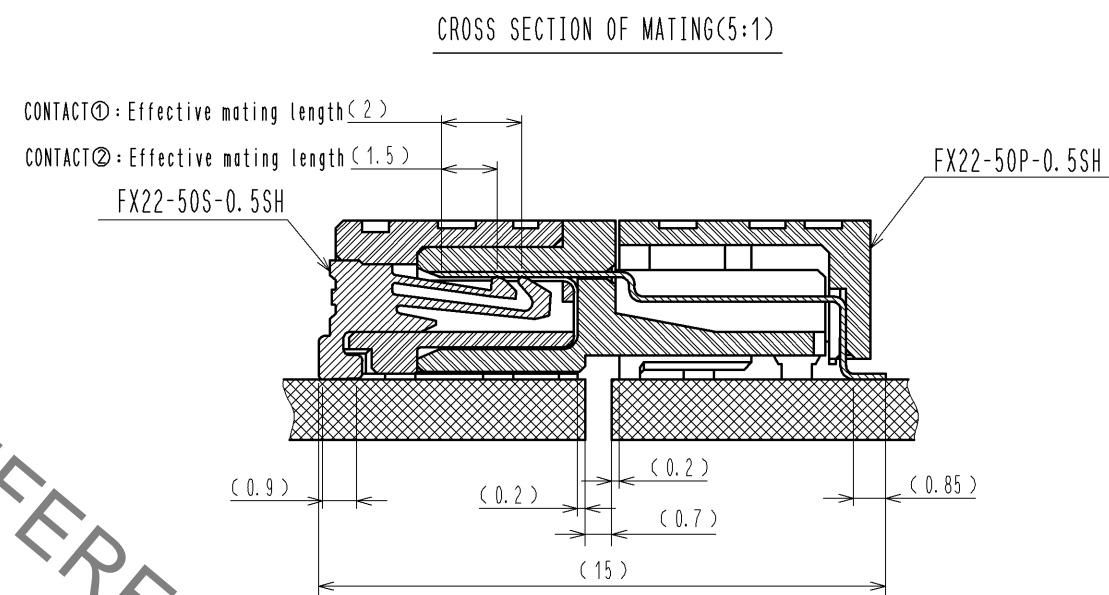
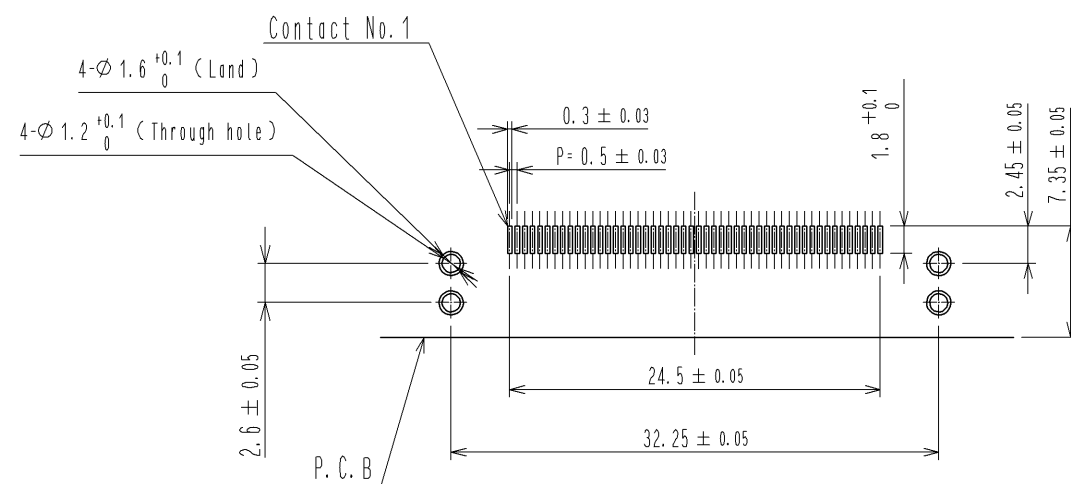
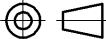





RECOMMENDED LAND PATTERN DIMENSION OF PCB  
(PCB THICKNESS:  $t=1.6\text{mm}$  METAL MASK THICKNESS:  $t=0.12\text{mm}$ )

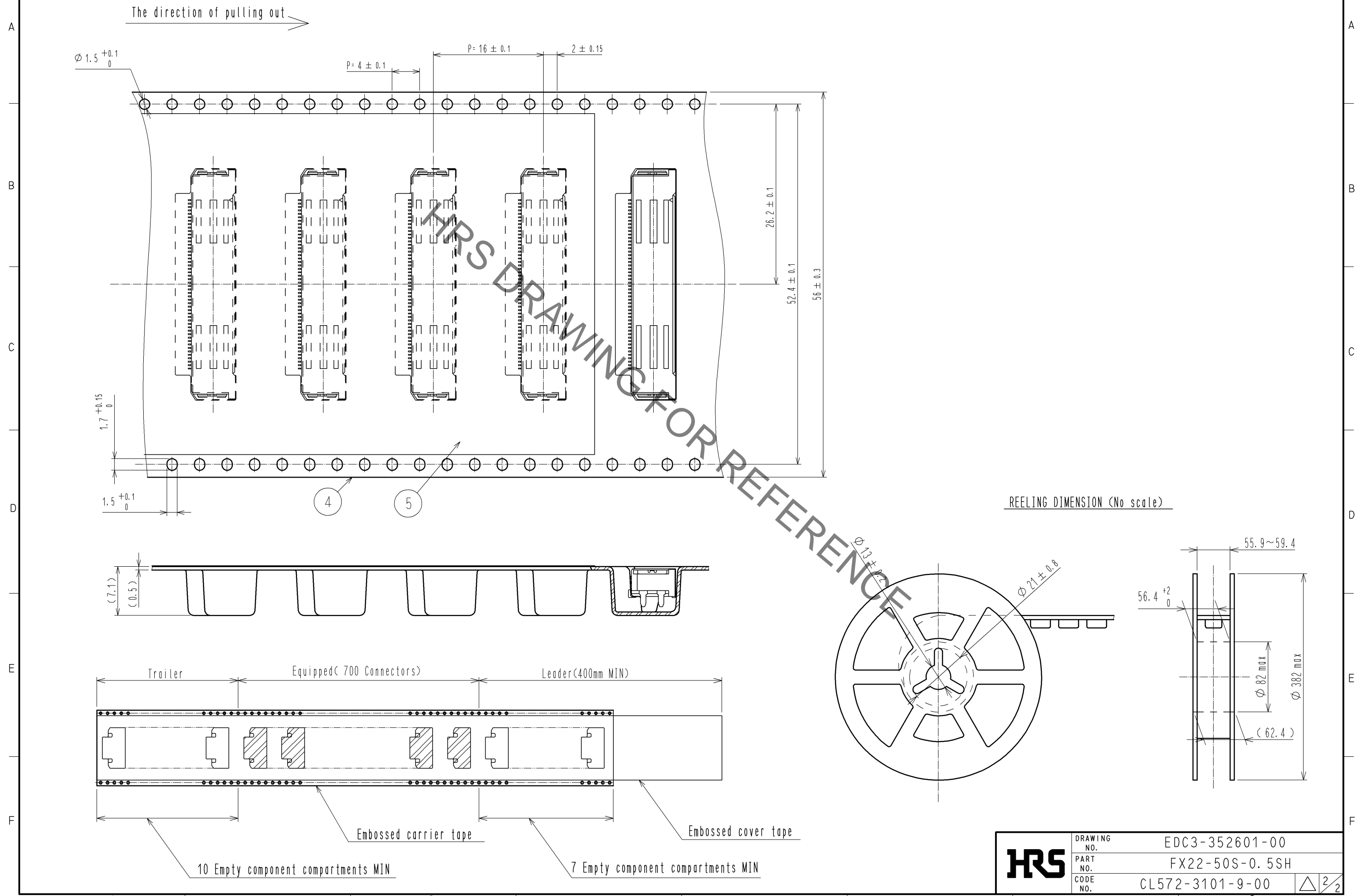


- NOTE 1 Lead CO-Planarity is  $0.1\text{mm}$  MAX.  
2 It shows the vacuum pickup area.  
3 Packing for product applies embossed carrier tape packing. (700pcs/RL)  
4 Blemish and hit mark can be occurred through out the manufacturing process which doesn't affect quality level.  
5 The dimensions in parentheses are for references.

3	COPPER ALLOY	CONTACT AREA:GOLD 0.1 μm		5	POLYESTER	(EMBOSSED COVER TAPE)											
		LEAD AREA:GOLD 0.03 μm		4	POLYSTYRENE	(EMBOSSED CARRIER TAPE)											
		UNDER PLATING:NICKEL 1.3 μm		3	BRASS	TIN-PLATING 3 μm											
1	LCP	BLACK UL94V-0				UNDER PLATING:NICKEL 1 μm											
NO.		MATERIAL		FINISH , REMARKS		NO.		MATERIAL		FINISH , REMARKS							
UNITS mm				SCALE 2 : 1				COUNT		DESCRIPTION OF REVISIONS		DESIGNED		CHECKED		DATE	
 HIROSE ELECTRIC CO., LTD.		APPROVED : HS. OKAWA		14. 07. 07		DRAWING NO.		EDC3-352601-00									
		CHECKED : KN. SHIBUYA		14. 07. 07		PART NO.		FX22-50S-0. 5SH									
		DESIGNED : AH. EDASHIGE		14. 07. 07		CODE NO.		CL572-3101-9-00									
		DRAWN : AH. EDASHIGE		14. 07. 07				 1/2									

Jun.1.2020 Copyright 2020 HIROSE ELECTRIC CO., LTD. All Rights Reserved.  
In case of consideration for using Automotive equipment / device which demand high reliability, kindly contact our sales window correspondents.

3 DRAWING FOR PACKING



HRS	DRAWING NO.	EDC3-352601-00
	PART NO.	FX22-50S-0.5SH
	CODE NO.	CL572-3101-9-00
		$\triangle$ 2/2