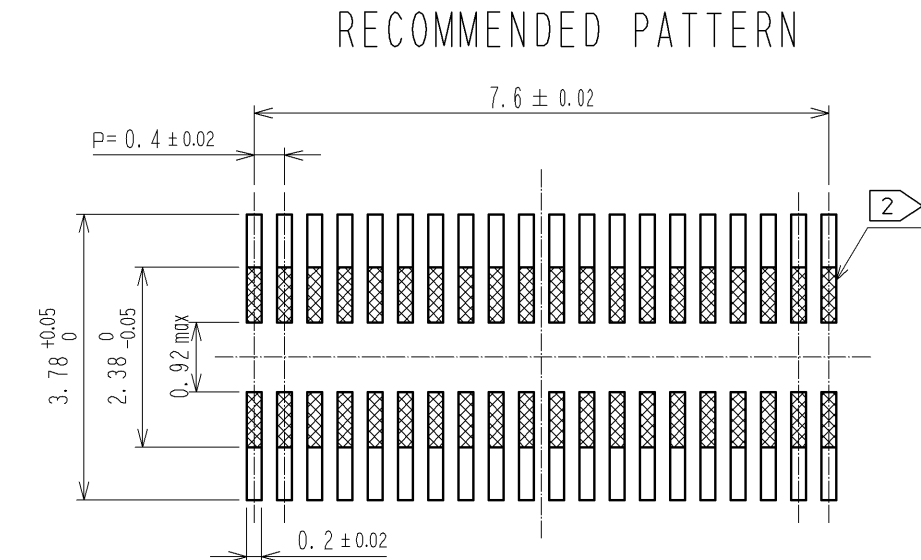
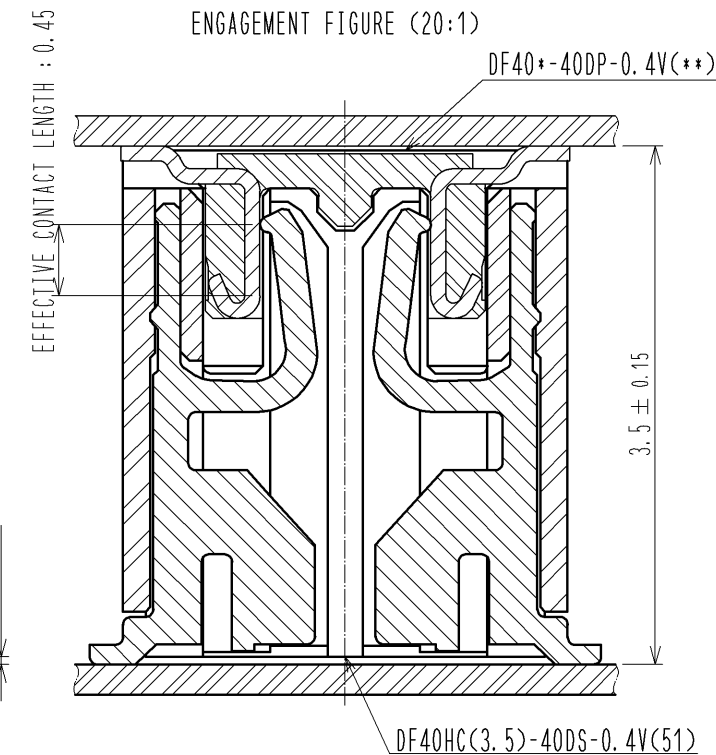
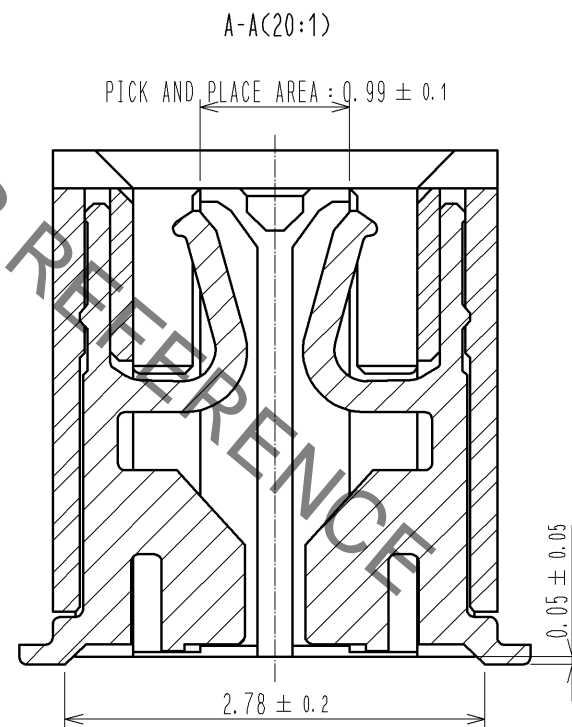


- NOTES
1. ALL LEADS CO-PLANARITY SHALL BE 0.1mm MAX.
 2. IS NO PATTERN AREA OTHER THAN THE SAME CIRCUIT.
 3. HRS MARK AND CAV NO. ARE INDICATED IN APPROXIMAL POSITION SHOWN.
 4. GATE POSITION IS POSITIONED IN PPROXIMAL AREA SHOWN.
A PART OF THE WALL COULD BE NOTCHED FOR SETTING GATE.



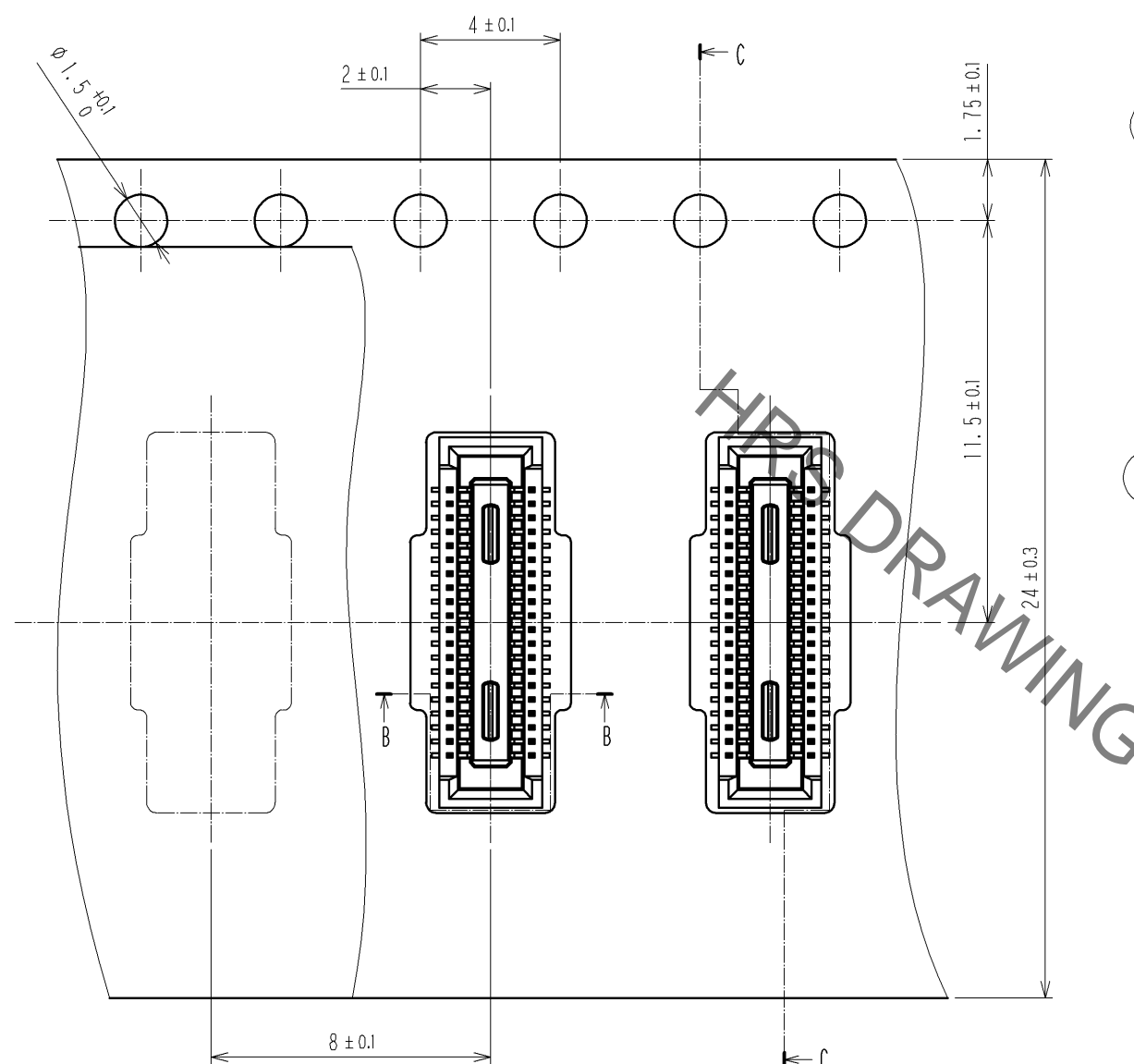
RECOMMENDED METAL MASK THICKNESS : $120 \mu\text{m}$
RECOMMENDED METAL MASK OPENING RATIO : 80% FOR LEAD PAD



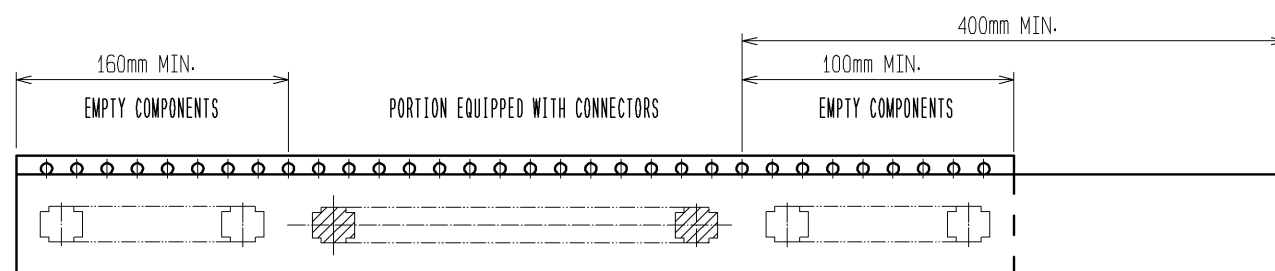
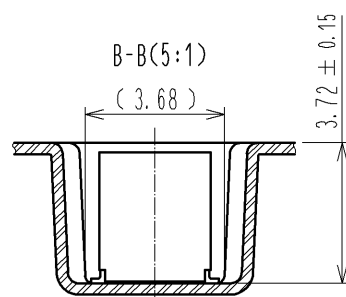
2	PHOSPHOR BRONZE	CONTACT AREA:GOLD 0.05μm MIN SMT LEAD:GOLD 0.05μm MIN UNDERPLATING:NICKEL 1μm MIN	6	PS	CLEAR, REINFORCEMENT COLLAR
			5	PS	BLACK, PLASTIC REEL
			4	POLYESTER	CLEAR, COVER TAPE
1	LCP	BLACK, UL94V-0	3	PS	CLEAR, EMBOSSED CARRIER TAPE
NO.	MATERIAL	FINISH , REMARKS	NO.	MATERIAL	FINISH , REMARKS

UNITS mm		SCALE 10 : 1		COUNT	DESCRIPTION OF REVISIONS	DESIGNED	CHECKED	DATE
 HIROSE ELECTRIC CO., LTD.	APPROVED :MO. ISHIDA		14. 11. 20		DRAWING NO.	EDC3-354172-01		
	CHECED :TS. MIYAZAKI		14. 11. 20		PART NO.	DF40HC(3. 5)-40DS-0. 4V(51)		
	DESIGNED :SH. HOSODA		14. 11. 20		CODE NO.	CL684-4209-9-51		 
	DRAWN :KR. AJITO		14. 11. 20					

EMBOSSED CARRIER TAPE (FREE)



DIRECTION OF UNREELING →

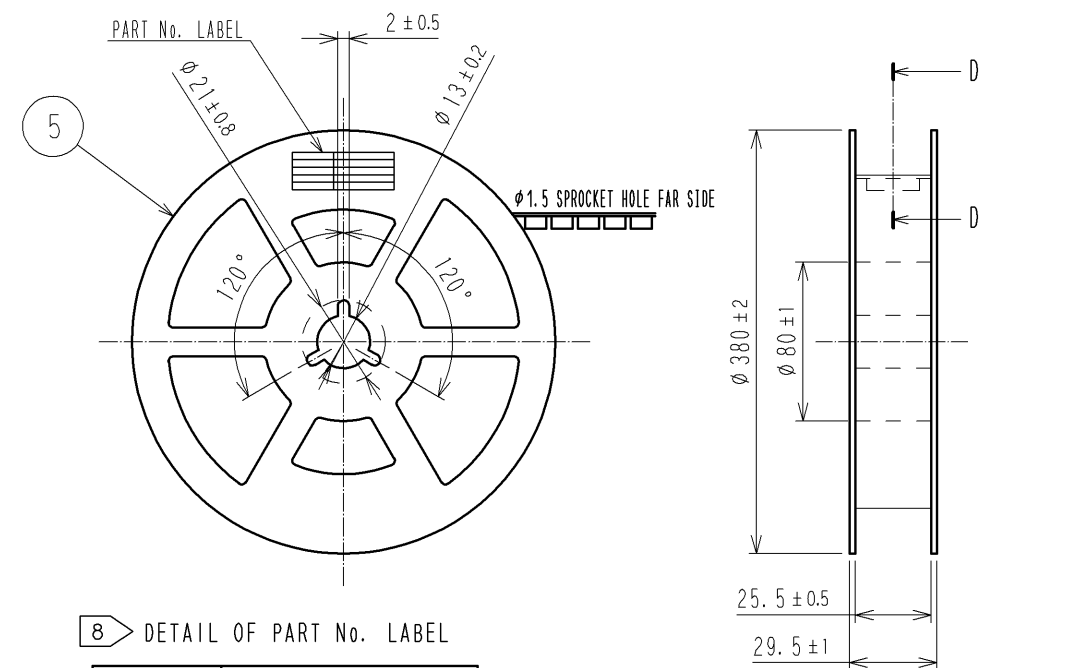


TRAILER

7 TAPING

LEADER

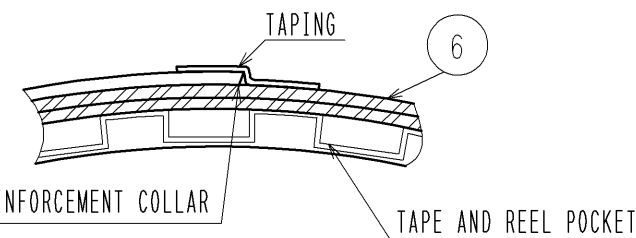
STYLE AND DIMENSION OF REEL (FREE SIZE)



8 DETAIL OF PART No. LABEL

製造年月日	** ** *
製品コード	CL684-4209-9-51
製品名	DF40HC(3.5)-40DS-0.4V(51)
数量	2000
納入者	ヒロセ電機(株)

D-D (FREE)



- NOTES
- PER REEL 2000 CONNECTORS.
 - THE DIMENSIONS IN PARENTHESES ARE FOR REFERENCE.
 - REFER TO JIS C 0806(IEC 60286-3)(PACKING OF COMPONENTS FOR AUTOMATIC HANDLING)
 - DETAIL OF PART NO. LABEL IS WRITTEN IN JAPANESE.
PART NO. LABEL DESCRIBES THE FOLLOWING INFORMATION FROM TOP.
PRODUCTION DATE:
PRODUCT CODE: CL684-4209-9-51
PART NUMBER: DF40HC(3.5)-40DS-0.4V(51)
NUMBER OF PIECES: 2000 PIECES
SUPPLIER NAME: HIROSE ELECTRIC CO., LTD.
 - AFTER PACKAGING, ROLL 2 METERS OF THE REINFORCEMENT COLLAR TO OUTER CIRCUMFERENCE OF TAPE AND REEL POCKET, AND TAPE DOWN AT THE END THE COLLAR.

HRS

DRAWING NO.	EDC3-354172-01
PART NO.	DF40HC(3.5)-40DS-0.4V(51)
CODE NO.	CL684-4209-9-51

2/2