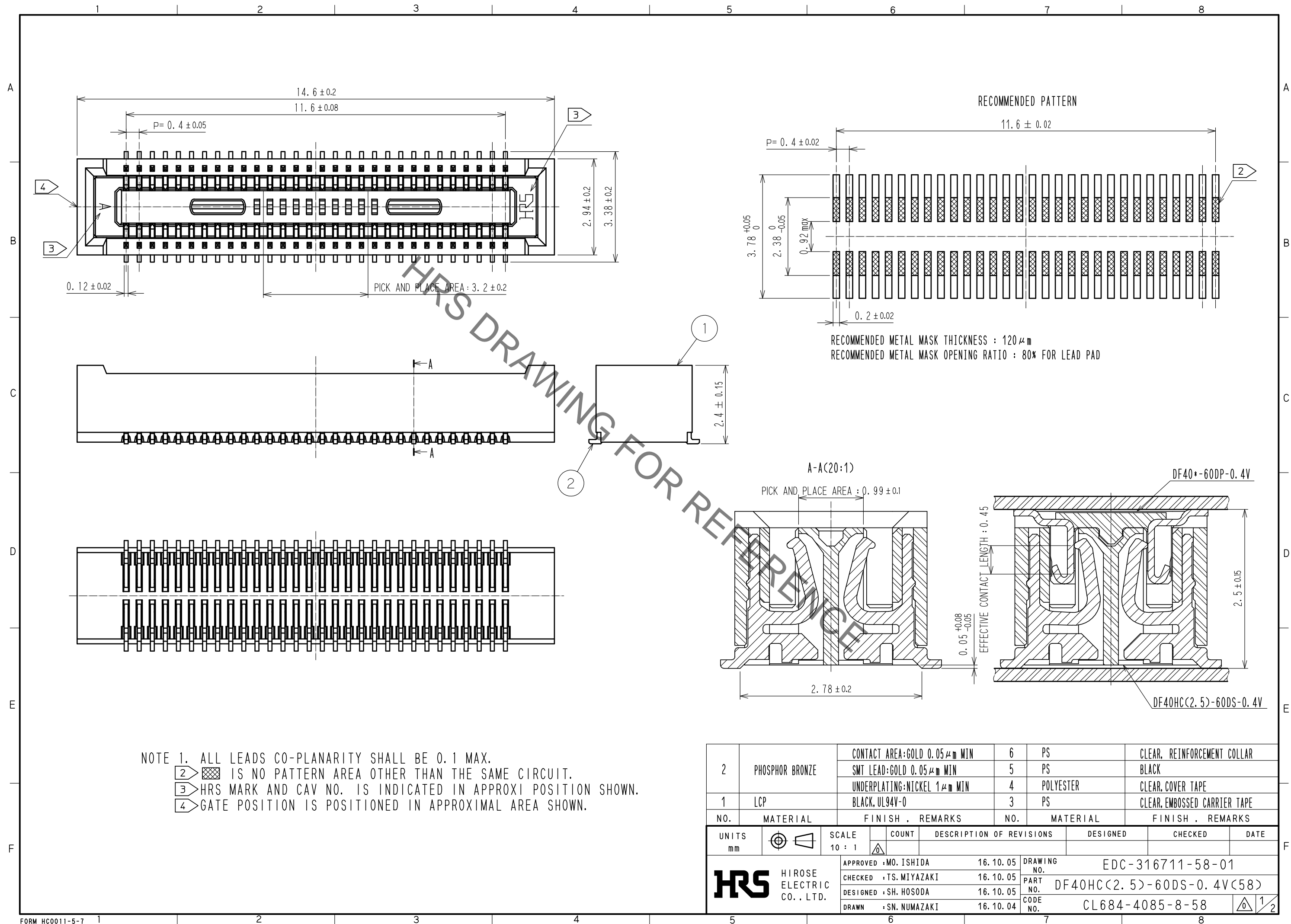


Jun.1.2020 Copyright 2020 HIROSE ELECTRIC CO., LTD. All Rights Reserved.
In case of consideration for using Automotive equipment / device which demand high reliability, kindly contact our sales window correspondents.

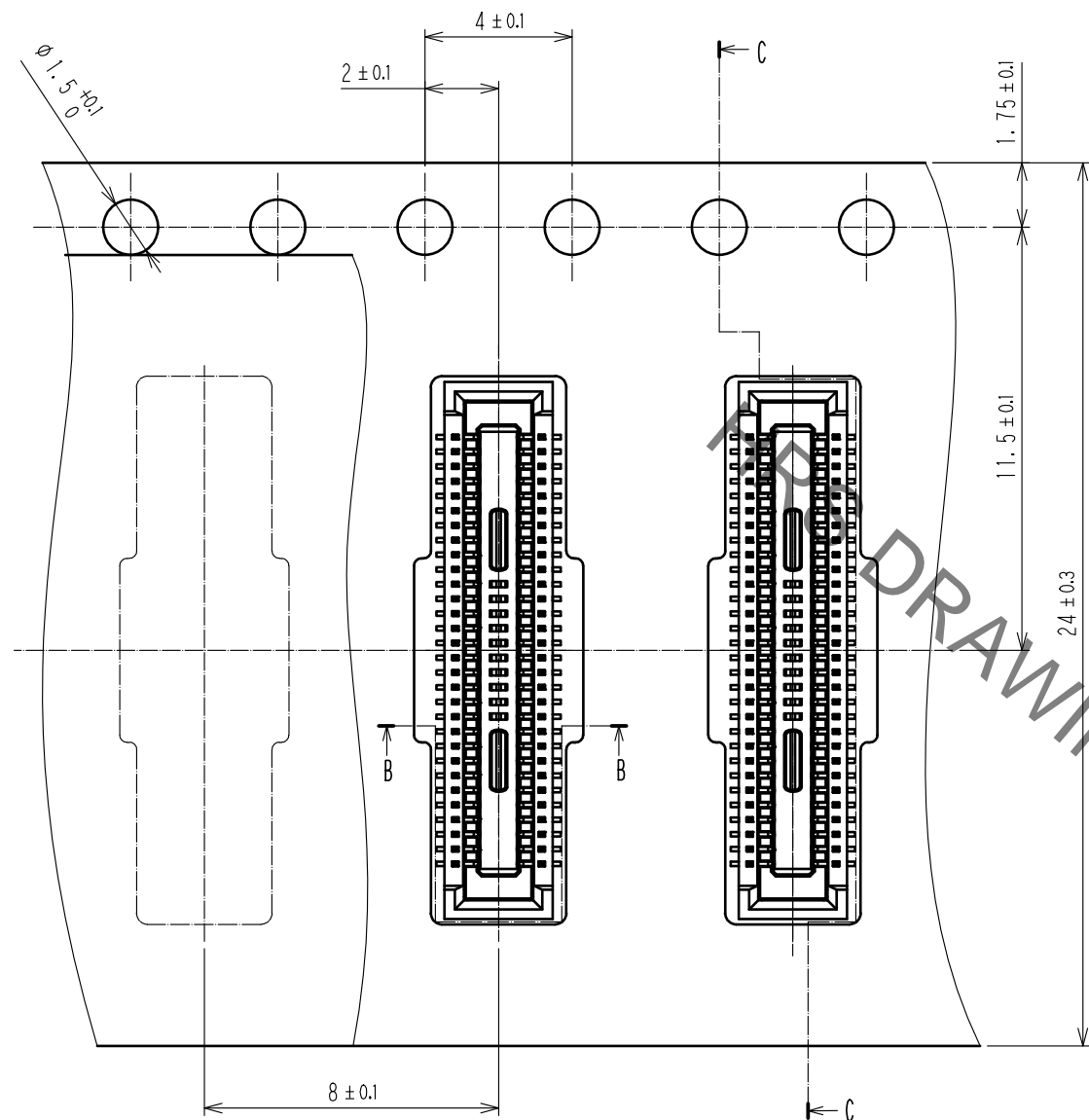


2	PHOSPHOR BRONZE	CONTACT AREA:GOLD 0.05μm MIN	6	PS	CLEAR, REINFORCEMENT COLLAR
		SMT LEAD:GOLD 0.05μm MIN	5	PS	BLACK
		UNDERPLATING:NICKEL 1μm MIN	4	POLYESTER	CLEAR, COVER TAPE
1	LCP	BLACK, UL94V-0	3	PS	CLEAR, EMBOSSED CARRIER TAPE
NO.	MATERIAL	FINISH , REMARKS	NO.	MATERIAL	FINISH , REMARKS

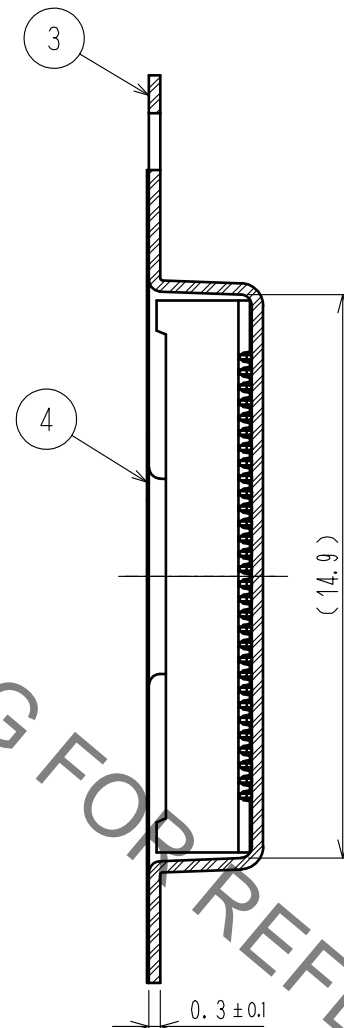
UNITS mm		SCALE 10 : 1		COUNT	DESCRIPTION OF REVISIONS	DESIGNED	CHECKED	DATE
HIROSE ELECTRIC CO., LTD.								
		APPROVED :MO. ISHIDA	16.10.05	DRAWING NO.	EDC-316711-58-01			
		CHECKED :TS.MIYAZAKI	16.10.05	PART NO.	DF40HC(2.5)-60DS-0.4V(58)			
		DESIGNED :SH. HOSODA	16.10.05	CODE NO.	CL684-4085-8-58			
		DRAWN :SN. NUMAZAKI	16.10.04					1/2

Jun.1.2020 Copyright 2020 HIROSE ELECTRIC CO., LTD. All Rights Reserved.
In case of consideration for using Automotive equipment / device which demand high reliability, kindly contact our sales window correspondents.

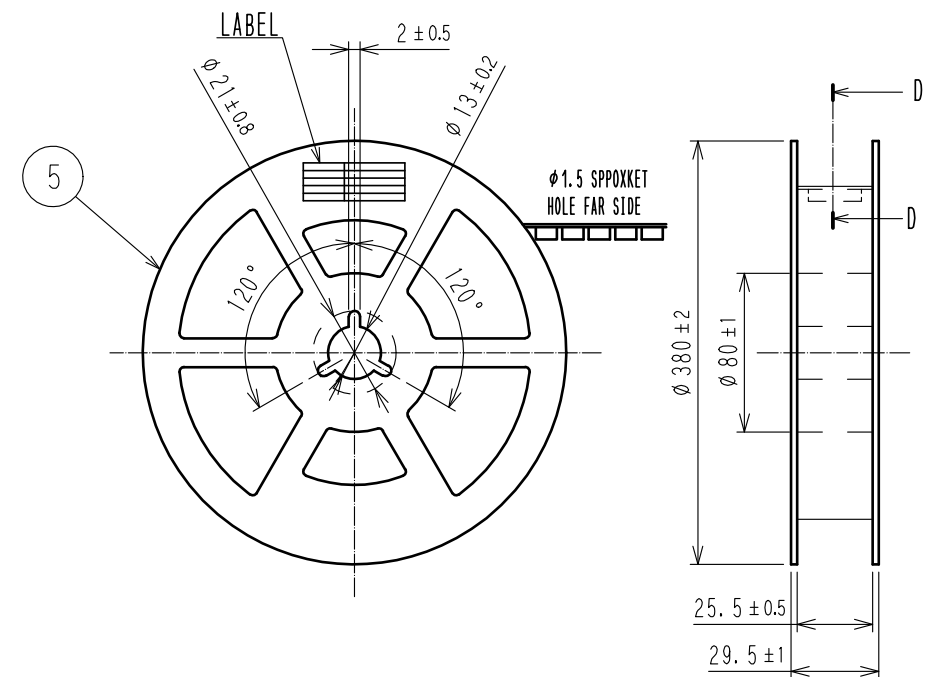
SCALE (5:1)



C-C(5:1)



STYLE AND DIMENSION OF REEL (FREE SIZE)

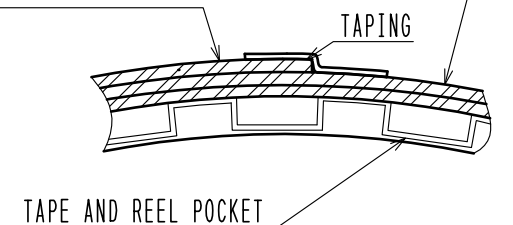


8>DETAIL OF PART NO. LABEL

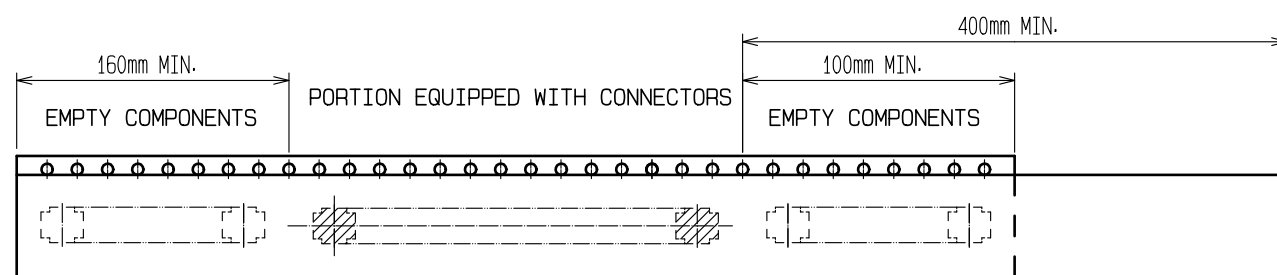
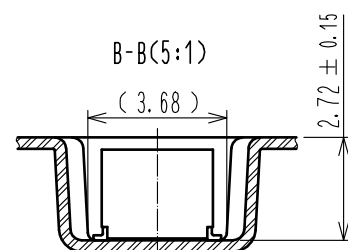
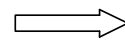
製造年月日	** ** *
製品コード	CL684-4085-8-58
製品名	DF40HC(2.5)-60DS-0.4V(58)
数量	1000
納入者	ヒロセ電機(株)

D-D (FREE)

9> REINFORCEMENT COLLAR



DIRECTION OF UNREELING



7> TAPING

- NOTES)
- PER REEL 1000 CONNECTORS.
 - THE DIMENSIONS IN PARENTHESES ARE FOR REFERENCE.
 - REFER TO JIS C 0806(PACKING OF COMPONENTS FOR AUTOMATIC HANDLING)
 - DETAIL OF PART NO. LABEL IS WRITTEN IN JAPANESE.
PRODUCTION DATE:
PRODUCT CODE: CL684-4085-8-58
PART NUMBER: DF40HC(2.5)-60DS-0.4V(58)
NUMBER OF PIECES: 1000 PIECES
SUPPLIER NAME: HIROSE ELECTRIC CO., LTD.
 - AFTER PACKAGING, ROLL 2 METERS OF THE REINFORCEMENT COLLAR TO OUTER CIRCUMFERENCE OF TAPE AND REEL POCKET, AND TAPE DOWN AT THE END THE COLLAR.

HRS

DRAWING NO.	EDC-316711-58-01
PART NO.	DF40HC(2.5)-60DS-0.4V(58)
CODE NO.	CL684-4085-8-58

