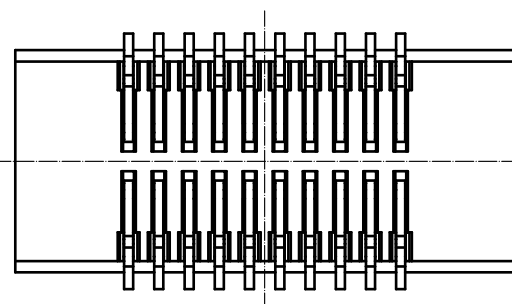
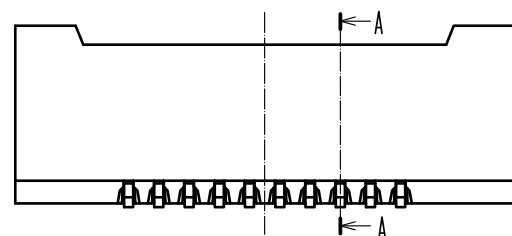
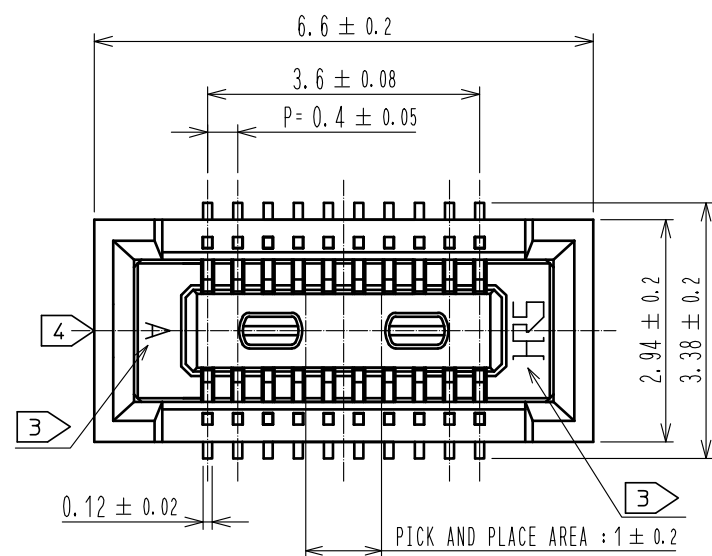
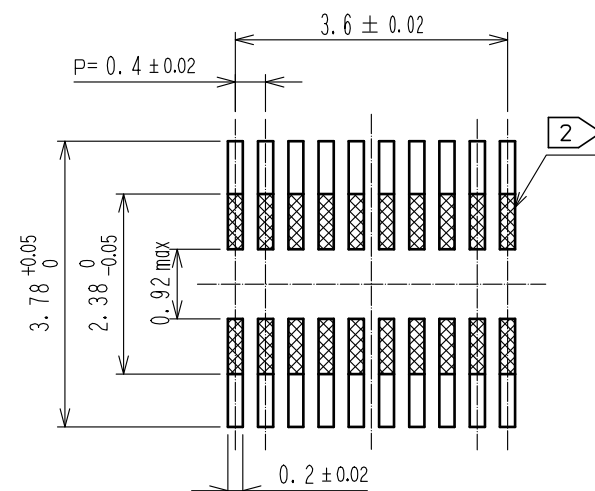


Jun.1.2020 Copyright 2020 HIROSE ELECTRIC CO., LTD. All Rights Reserved.
In case of consideration for using Automotive equipment / device which demand high reliability, kindly contact our sales window correspondents.



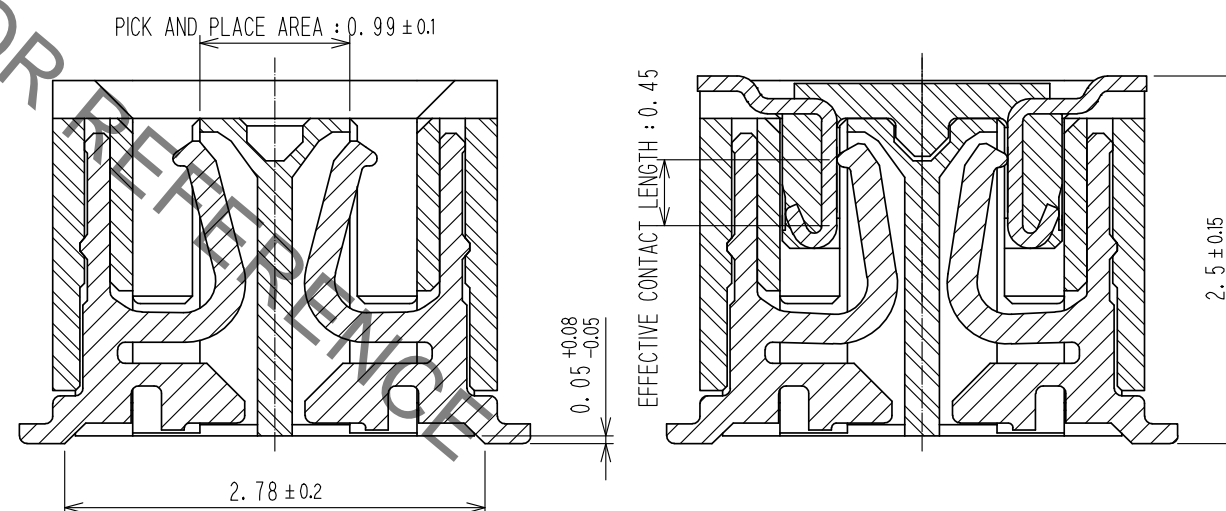
NOTE 1. ALL LEADS CO-PLANARITY SHALL BE 0.1 MAX.
2 IS NO PATTERN AREA OTHER THAN THE SAME CIRCUIT.
3 HRS MARK AND CAV NO. IS INDICATED IN APPROXI POSITION SHOWN.
4 GATE POSITION IS POSITIONED IN APPROXIMAL AREA SHOWN.

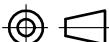
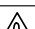


RECOMMENDED PATTERN



RECOMMENDED METAL MASK THICKNESS : $120 \mu\text{m}$
RECOMMENDED METAL MASK OPENING RATIO : 80% FOR LEAD PAD

A-A(20:1)



2	PHOSPHOR BRONZE	CONTACT AREA:GOLD 0.05μm MIN	6	PS	CLEAR, REINFORCEMENT COLLAR					
		SMT LEAD:GOLD 0.05μm MIN	5	PS	BLACK					
		UNDERPLATING:NICKEL 1μm MIN	4	POLYESTER	CLEAR, COVER TAPE					
1	LCP	BLACK, UL94V-0	3	PS	CLEAR, EMBOSSED CARRIER TAPE					
NO.	MATERIAL	FINISH , REMARKS		NO.	MATERIAL	FINISH , REMARKS				
UNITS mm				SCALE 10 : 1		COUNT	DESCRIPTION OF REVISIONS	DESIGNED	CHECKED	DATE
 HIROSE ELECTRIC CO., LTD.		APPROVED :MO. ISHIDA		17. 09. 08		DRAWING NO. EDC-319623-58-01				
		CHECKED :TS. MIYAZAKI		17. 09. 08		PART NO. DF40HC(2. 5)-20DS-0. 4V(58)				
		DESIGNED :SH. HOSODA		17. 09. 08		CODE NO. CL684-4126-3-58				
		DRAWN :RN. IIDA		17. 09. 08		 1/				

Jun.1.2020 Copyright 2020 HIROSE ELECTRIC CO., LTD. All Rights Reserved.
In case of consideration for using Automotive equipment / device which demand high reliability, kindly contact our sales window correspondents.

