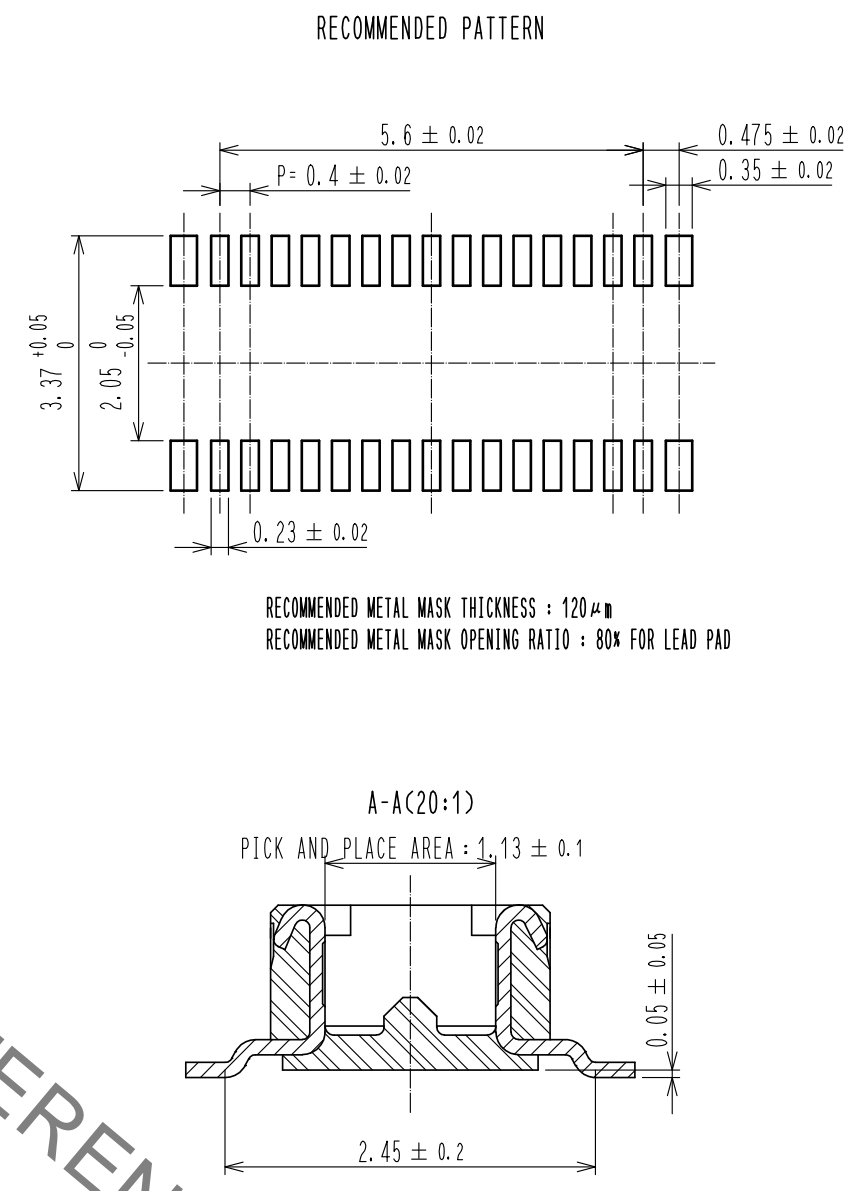
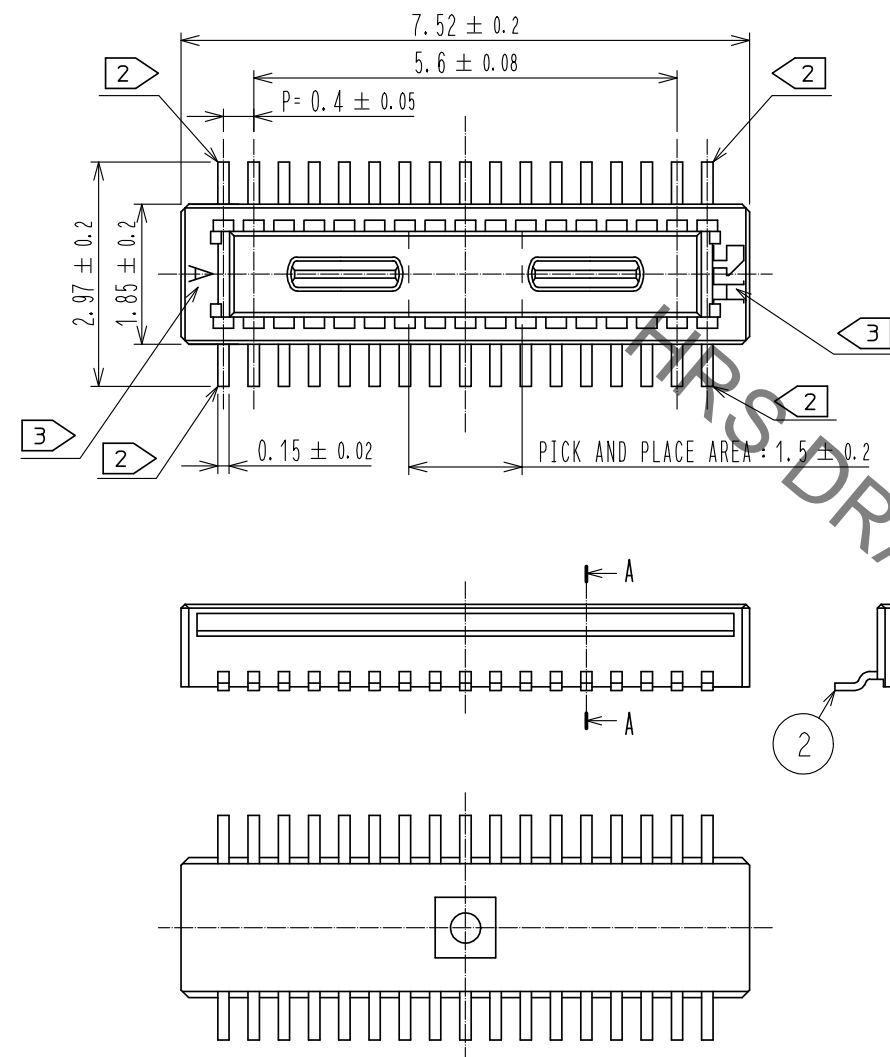
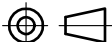





Jun.1.2020 Copyright 2020 HIROSE ELECTRIC CO., LTD. All Rights Reserved.
In case of consideration for using Automotive equipment / device which demand high reliability, kindly contact our sales window correspondents.



NOTES 1. ALL LEADS CO-PLANARITY SHALL BE 0.1mm MAX.
2 EACH ONE CONTACT AT 4 CORNERS SHALL BE USED AS METAL HOLD DOWN.
3 HRS MARK AND CAV NO. IS INDICATED IN APPROXIMAL POSITION SHOWN.
THE INDICATION COULD BE ON THE UPPER SURFACE OF DESIGN ON THE CONNECTOR.

2	PHOSPHOR BRONZE	CONTACT AREA: Au 0.05μm MIN	6	PS	CLEAR, REINFORCEMENT COLLAR		
		SMT LEAD: Au 0.05μm MIN	5	PS	BLACK, PLASTIC REEL		
		UNDERPLATING: NICKEL 1μm MIN	4	POLYESTER	CLEAR, COVER TAPE		
1	LCP	BLACK, UL94V-0	3	PS	CLEAR, EMBOSSED CARRIER TAPE		
NO.	MATERIAL	FINISH , REMARKS	NO.	MATERIAL	FINISH , REMARKS		
UNITS mm		SCALE 10 : 1	COUNT 	DESCRIPTION OF REVISIONS	DESIGNED	CHECKED	DATE
 HIROSE ELECTRIC CO., LTD.		APPROVED : MO. ISHIDA	15. 07. 15	DRAWING NO.	EDC-311344-58-01		
		CHECED : TS. MIYAZAKI	15. 07. 15	PART NO.	DF40C-30DP-0. 4V (58)		
		DESIGNED : SH. HOSODA	15. 07. 15	CODE NO.	CL684-4012-4-58		
		DRAWN : KR. AJITO	15. 07. 15	 1/2			

Jun.1.2020 Copyright 2020 HIROSE ELECTRIC CO., LTD. All Rights Reserved.
In case of consideration for using Automotive equipment / device which demand high reliability, kindly contact our sales window correspondents.

