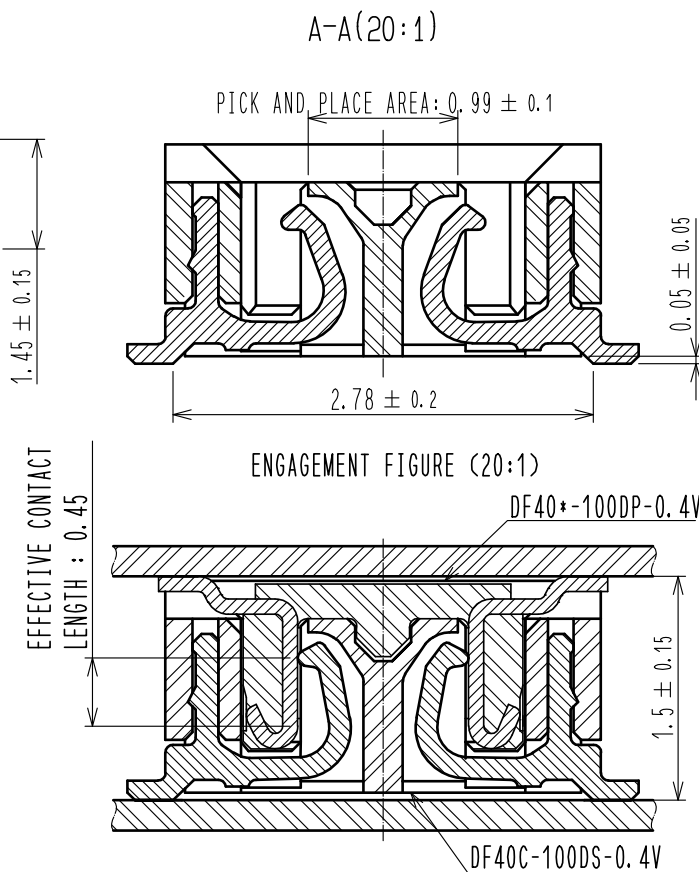
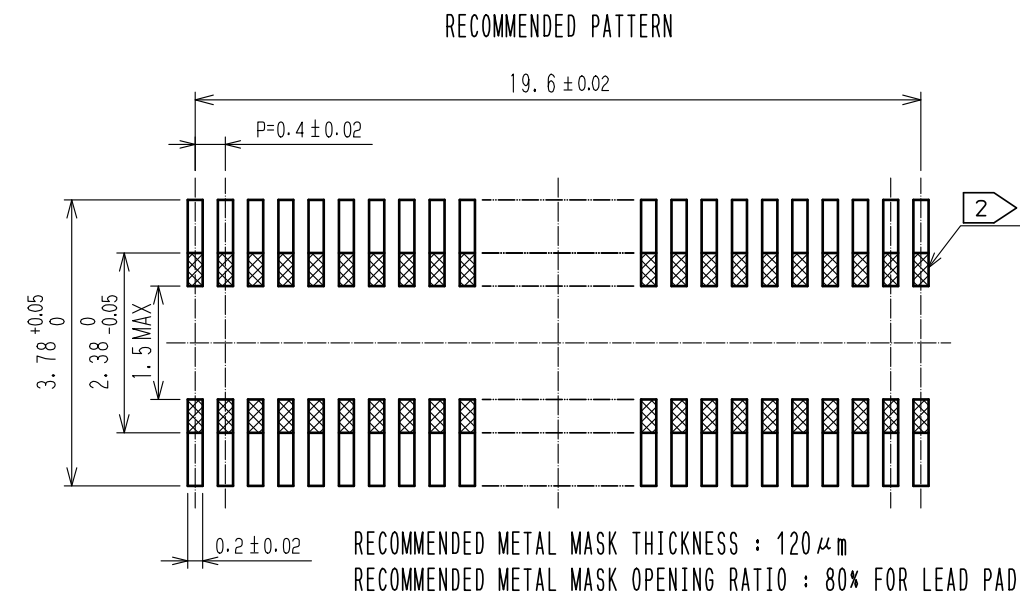
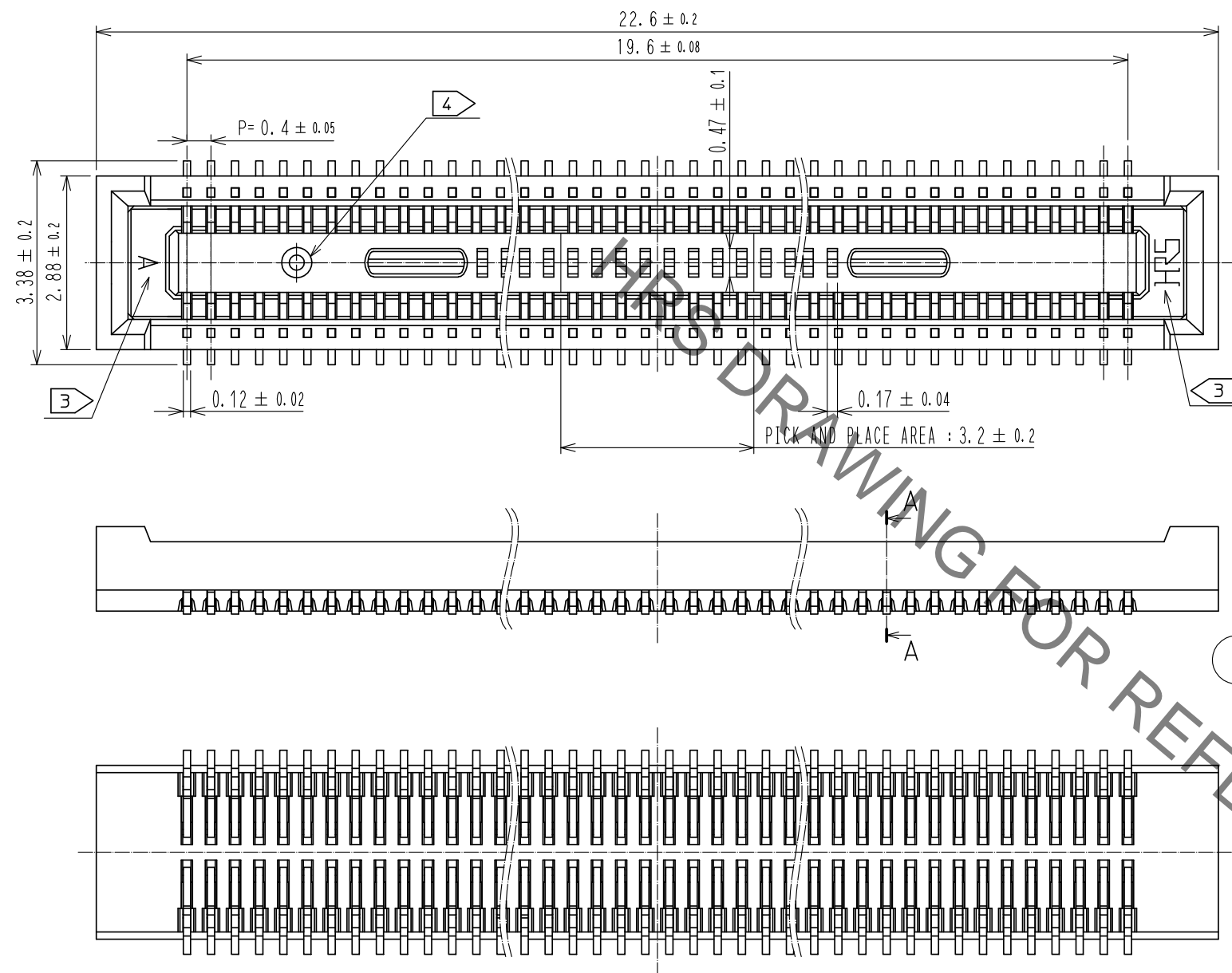


Jun.1.2020 Copyright 2020 HIROSE ELECTRIC CO., LTD. All Rights Reserved.  
In case of consideration for using Automotive equipment / device which demand high reliability, kindly contact our sales window correspondents.



- NOTES) 1. ALL LEADS METAL FITTINGS CO-PLANARITY SHALL BE  $0.1\text{mm}$  MAX.  
2. IS NO PATTERN AREA OTHER THAN THE SAME CIRCUIT.  
3. HRS MARK AND CAV NO. IS INDICATED IN APPROXIMAL POSITION SHOWN.  
4. GATE POSITION IS POSITIONED IN APPROXIMAL AREA SHOWN.

2	PHOSPHOR BRONZE	CONTACT AREA:GOLD 0.05μm MIN	6	PS	CLEAR, REINFORCEMENT COLLAR
		SMT LEAD:GOLD 0.05μm MIN	5	PS	BLACK
		UNDERPLATING:NICKEL 1μm MIN	4	POLYESTER	CLEAR, COVER TAPE
1	LCP	BLACK, UL94V-0	3	PS	CLEAR, EMBOSSED CARRIER TAPE
NO.	MATERIAL	FINISH . REMARKS	NO.	MATERIAL	FINISH . REMARKS

UNITS mm		SCALE 10 : 1		COUNT	DESCRIPTION OF REVISIONS	DESIGNED	CHECKED	DATE
 HIROSE ELECTRIC CO., LTD.		APPROVED :MO. ISHIDA	16. 10. 05	DRAWING NO.	EDC-313637-58-01			
		CHECED :TS. MIYAZAKI	16. 10. 05	PART NO.	DF40C-100DS-0.4V (58)			
		DESIGNED :SH. HOSODA	16. 10. 05	CODE NO.	CL684-4033-4-58			
		DRAWN :SN. NUMAZAKI	16. 10. 04	 1				

Jun.1.2020 Copyright 2020 HIROSE ELECTRIC CO., LTD. All Rights Reserved.  
In case of consideration for using Automotive equipment / device which demand high reliability, kindly contact our sales window correspondents.

