


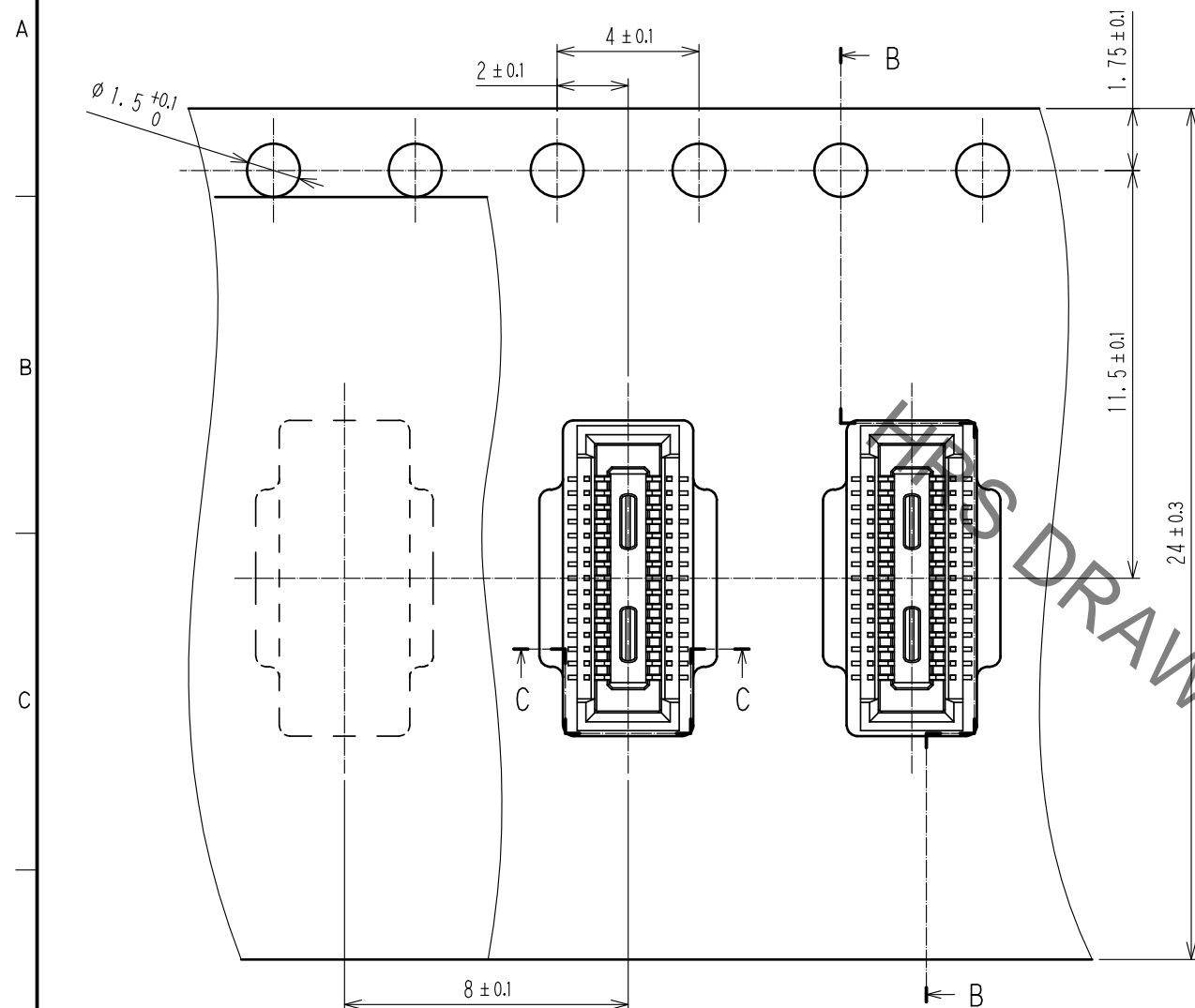
2  IS NO PATTERN AREA OTHER THAN THE SAME CIRCUIT.

2	PHOSPHOR BRONZE	CONTACT AREA:GOLD 0.05μm MIN	6	PS	CLEAR, REINFORCEMENT COLLAR
		SMT LEAD:GOLD 0.05μm MIN	5	PS	BLACK
		UNDERPLATING:NICKEL 1μm MIN	4	POLYESTER	CLEAR, COVER TAPE
1	LCP	BLACK, UL94V-0	3	PS	CLEAR, EMBOSSED CARRIER TAPE
NO.	MATERIAL	FINISH . REMARKS	NO.	MATERIAL	FINISH . REMARKS

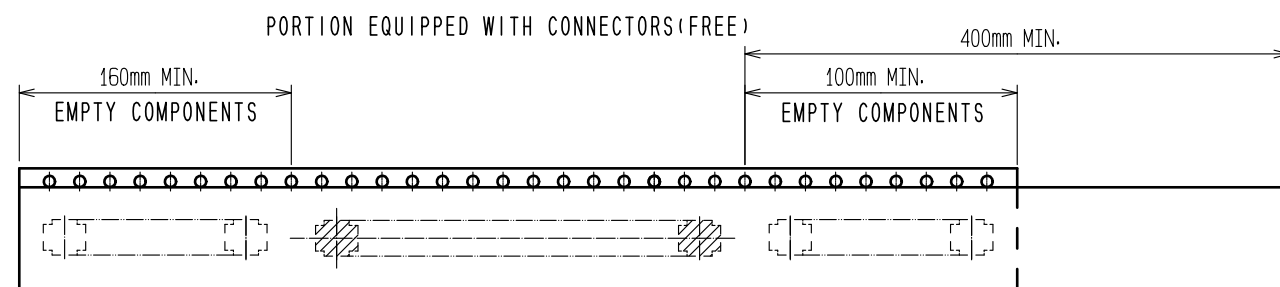
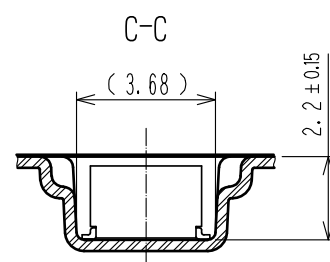
UNITS mm		SCALE 10 : 1		COUNT	DESCRIPTION OF REVISIONS	DESIGNED	CHECKED	DATE
 HIROSE ELECTRIC CO., LTD.	APPROVED :MO. ISHIDA	16.10.05	DRAWING NO.	EDC-315593-58-01				
	CHECKED :TS. MIYAZAKI	16.10.05	PART NO.	DF40C(2.0)-30DS-0.4V(58				
	DESIGNED :SH. HOSODA	16.10.05	CODE NO.	CL684-4058-5-58				
	DRAWN :SN. NUMAZAKI	16.10.04						

Jun.1.2020 Copyright 2020 HIROSE ELECTRIC CO., LTD. All Rights Reserved.  
In case of consideration for using Automotive equipment / device which demand high reliability, kindly contact our sales window correspondents.

# EMBOSSED CARRIER TAPE DIMENSIONS (5:1)



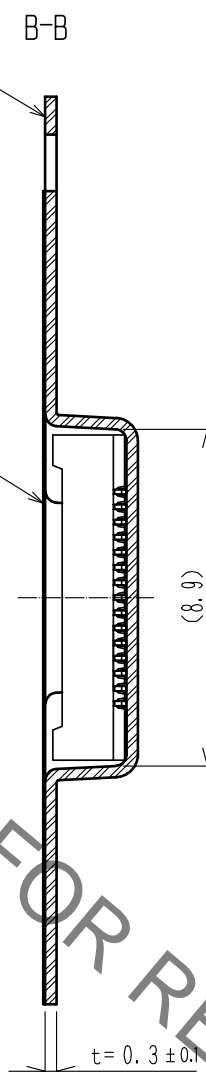
DIRECTION OF UNREELING →



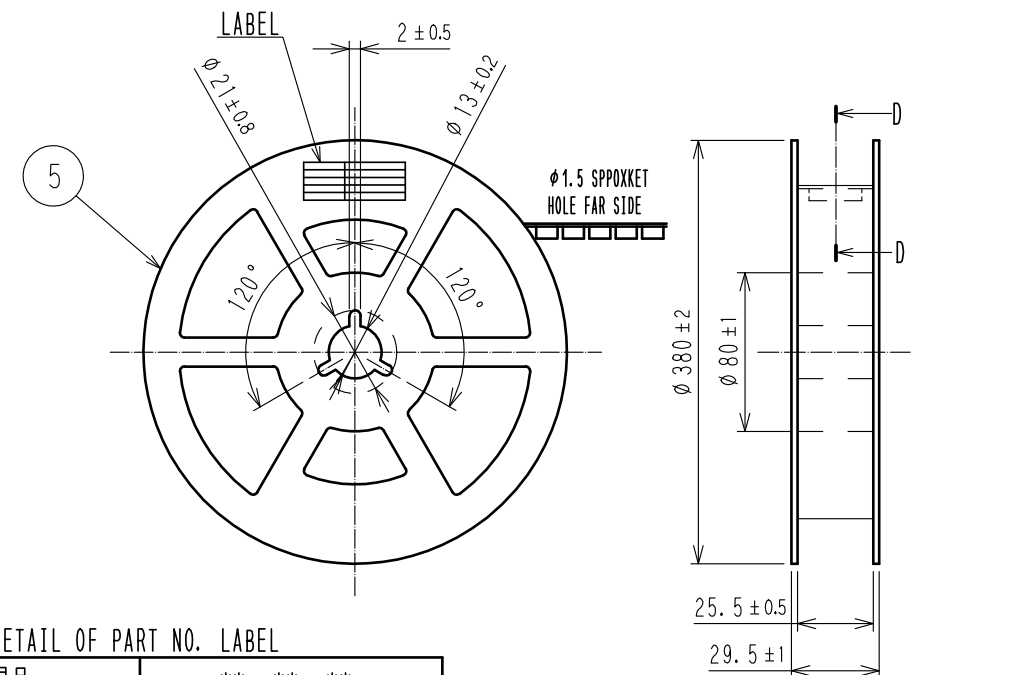
TRAILER

7 TAPING

LEADER



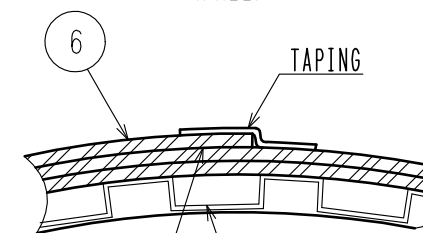
## STYLE AND DIMENSION OF REEL (FREE SIZE)



### 8 > DETAIL OF PART NO. LABEL

製造年月日	** ** *
製品コード	CL684-4058-5-58
製品名	DF40C(2.0)-30DS-0.4V(58)
数量	1000
納入者	ヒロセ電機(株)

D-D(FREE)



9 > REINFORCEMENT COLLAR

TAPE AND REEL POCKET

NOTES 5. PER REEL 1000 CONNECTORS.

6. THE DIMENSIONS IN PARENTHESES ARE FOR REFERENCE.

7 > REFER TO JIS C 0806(PACKING OF COMPONENTS FOR AUTOMATIC HANDLING)

8 > DETAIL OF PART No. LABEL IS WRITTEN IN JAPANESE.

PART NO. LABEL DESCRIBES THE FOLLOWING INFORMATION FROM TOP.

Production Date:

Product Code: CL684-4058-5-58

Part Number: DF40C(2.0)-30DS-0.4V(58)

Number of pieces: 1000 pieces

Supplier Name: Hirose Electric Co., Ltd.

9 > AFTER PACKAGING, ROLL 2 METERS OF THE REINFORCEMENT COLLAR TO OUTER CIRCUMFERENCE OF TAPE AND REEL POCKET, AND TAPE DOWN AT THE END THE COLLAR.

HRS

図番:	EDC-315593-58-01
製品名:	DF40C(2.0)-30DS-0.4V(58)
製品コード	CL684-4058-5-58

2/2