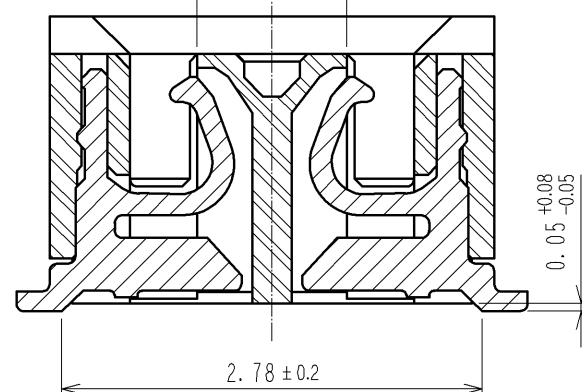
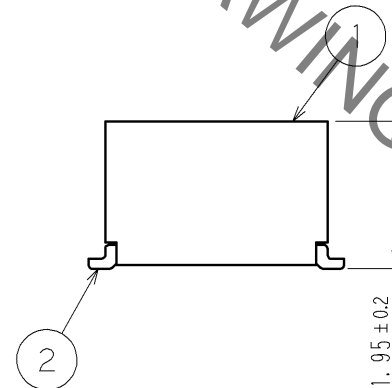


A-A (20:1)

PICK AND PLACE AREA:  $0.99 \pm 0.1$

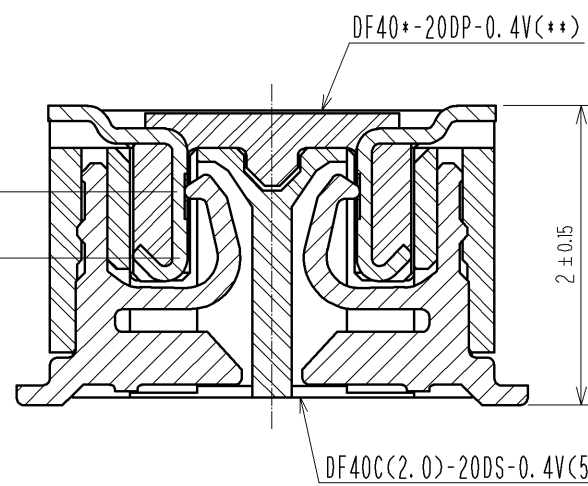


$2.78 \pm 0.2$



ENGAGEMENT FIGURE (20:1)

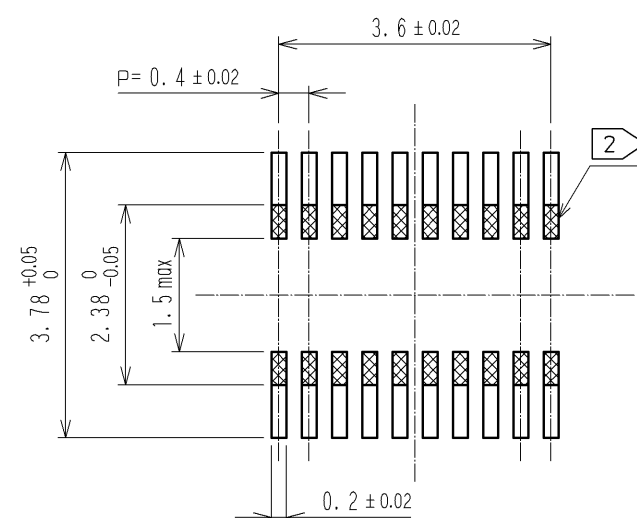
EFFECTIVE CONTACT LENGTH:  $0.45$



DF40\*-20DP-0.4V(++)

DF40C(2.0)-20DS-0.4V(58)

RECOMMENDED PATTERN



RECOMMENDED METAL MASK THICKNESS :  $120 \mu\text{m}$   
RECOMMENDED METAL MASK OPENING RATIO : 80% FOR LEAD PAD

- NOTES
1. ALL LEADS AND REINFORCED METAL FITTINGS CO-PLANARITY SHALL BE  $0.1 \text{ mm}$  MAX.
  2. IS NO PATTERN AREA OTHER THAN THE SAME CIRCUIT.
  3. HRS MARK AND CAV NO. IS INDICATED IN APPROXIMAL POSITION SHOWN.
  4. GATE POSITION IS POSITIONED IN APPROXIMAL AREA SHOWN.

2	PHOSPHOR BRONZE	CONTACT AREA: GOLD $0.05 \mu\text{m}$ MIN SMT LEAD: GOLD $0.05 \mu\text{m}$ MIN UNDERPLATING: NICKEL $1 \mu\text{m}$ MIN	6	PS	CLEAR, REINFORCEMENT COLLAR
1	LCP	BLACK, UL94V-0	5	PS	BLACK, PLASTIC REEL
NO. MATERIAL		FINISH, REMARKS	NO. MATERIAL		FINISH, REMARKS
UNITS mm		SCALE 10:1	COUNT		DESCRIPTION OF REVISIONS
HRS		HIROSE ELECTRIC CO., LTD.	APPROVED : KH. IKEDA		14.06.17
			CHECKED : TS. MIYAZAKI		14.06.17
			DESIGNED : RT. SHIMIZU		14.06.17
			DRAWN : KR. AJITO		14.06.17
			DRAWING NO.		EDC3-314723-02
			PART NO.		DF40C(2.0)-20DS-0.4V(58)
			CODE NO.		CL684-4040-0-58
			DATE		1/2

