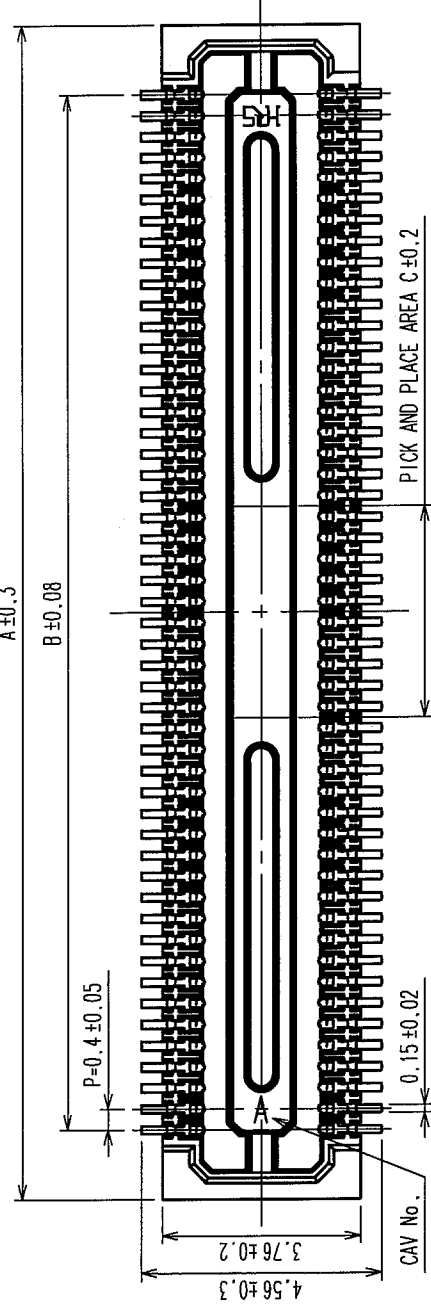


COUNT	DESCRIPTION OF REVISIONS	BY	CHKD	DATE	COUNT	DESCRIPTION OF REVISIONS	BY	CHKD	DATE

A

RECOMMENDED PATTERN



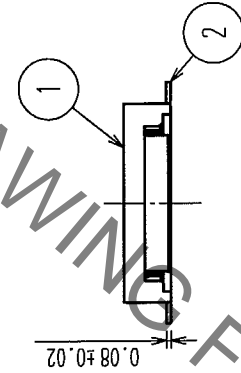
B ± 0.02

P = 0.4 ± 0.05

4.86 ± 0.05
3.46 ± 0.05

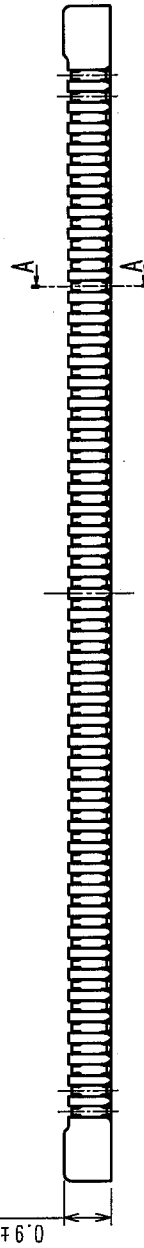
0.23 ± 0.02

RECOMMENDED SOLDER PASTE: THICKNESS 120 μm



0.08 ± 0.02

0.9 ± 0.15



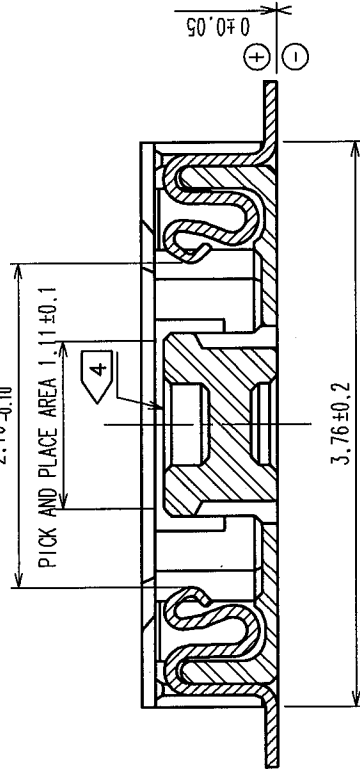
0.08 ± 0.02

0.9 ± 0.15

A-A (20:1)

2.16 ± 0.05
-0.10

PICK AND PLACE AREA 1.1 ± 0.1



3.76 ± 0.2

0.05 ± 0.05

PART NO.	CODE NO.	A	B	C
DF30FC-80DS-0.4V(82)	CL684-1116-3-82	18.22	15.6	3.2
DF30FC-70DS-0.4V(82)	CL684-1115-0-82	16.22	13.6	2.8
DF30FC-60DS-0.4V(82)	CL684-1082-3-82	14.22	11.6	2.4
DF30FC-50DS-0.4V(82)	CL684-1114-8-82	12.22	9.6	2
DF30FC-40DS-0.4V(82)	CL684-1078-6-82	10.22	7.6	1.6
DF30FC-34DS-0.4V(82)	CL684-1113-5-82	9.02	6.4	1.36
DF30FC-30DS-0.4V(82)	CL684-1112-2-82	8.22	5.6	1.2
DF30FC-24DS-0.4V(82)	CL684-1111-0-82	7.02	4.4	1.2
DF30FC-22DS-0.4V(82)	CL684-1110-7-82	6.62	4.0	1.2
DF30FC-20DS-0.4V(82)	CL684-1109-8-82	6.22	3.6	1.2

NOTE 1: ALL LEADS CO-PLANARITY SHALL BE 0.1 MAX.

2. PER REEL : 1000 CONNECTORS.

3. AT THE BEGINNING OF THE REEL, 100 MM AT MIN SHALL BE EMPTY POCKETS.

AT THE END OF THE REEL, 160 MM AT MIN SHALL BE EMPTY POCKETS.

4. NO CAVITY ON THE CONNECTORS LESS THAN 24 POS.

5. CONTACT PLATING SPECIFICATIONS.

CONTACT AREA : GOLD 0.05 μm MIN.

SMT LEAD : GOLD 0.02 μm MIN.

UNDERPLATING : NICKEL 1 μm MIN.

(SURFACE : SEALING)

2	PHOSPHOR BRONZE	5	4	POLYESTER	CLEAR(COVER TAPE)
1	LCP	UL94V-0, BLACK	3	PS	CLEAR(EMBOSSED CARRIER TAPE)
NO.	MATERIAL	FINISH, REMARKS	NO.	MATERIAL	FINISH, REMARKS
CODE NO. (OLD)	DRAWN	DESIGNED	CHECKED	APPROVED	RELEASED
	T.NISHI	K. Nishikawa	K. Nishikawa	Y. Qia	
	040825	04.08.25	04.08.25	04.08.25	
DRAWING NO.	EDC3-303556-05	PART NO.	DF30FC-*DS-0.4V(82)		
SCALE	FREE	CODE NO.	CL684-***-82		
UNITS	mm				

HIROSE ELECTRIC CO., LTD

CL684-***-82

FORM NO.229

8

7

6

5

4

3

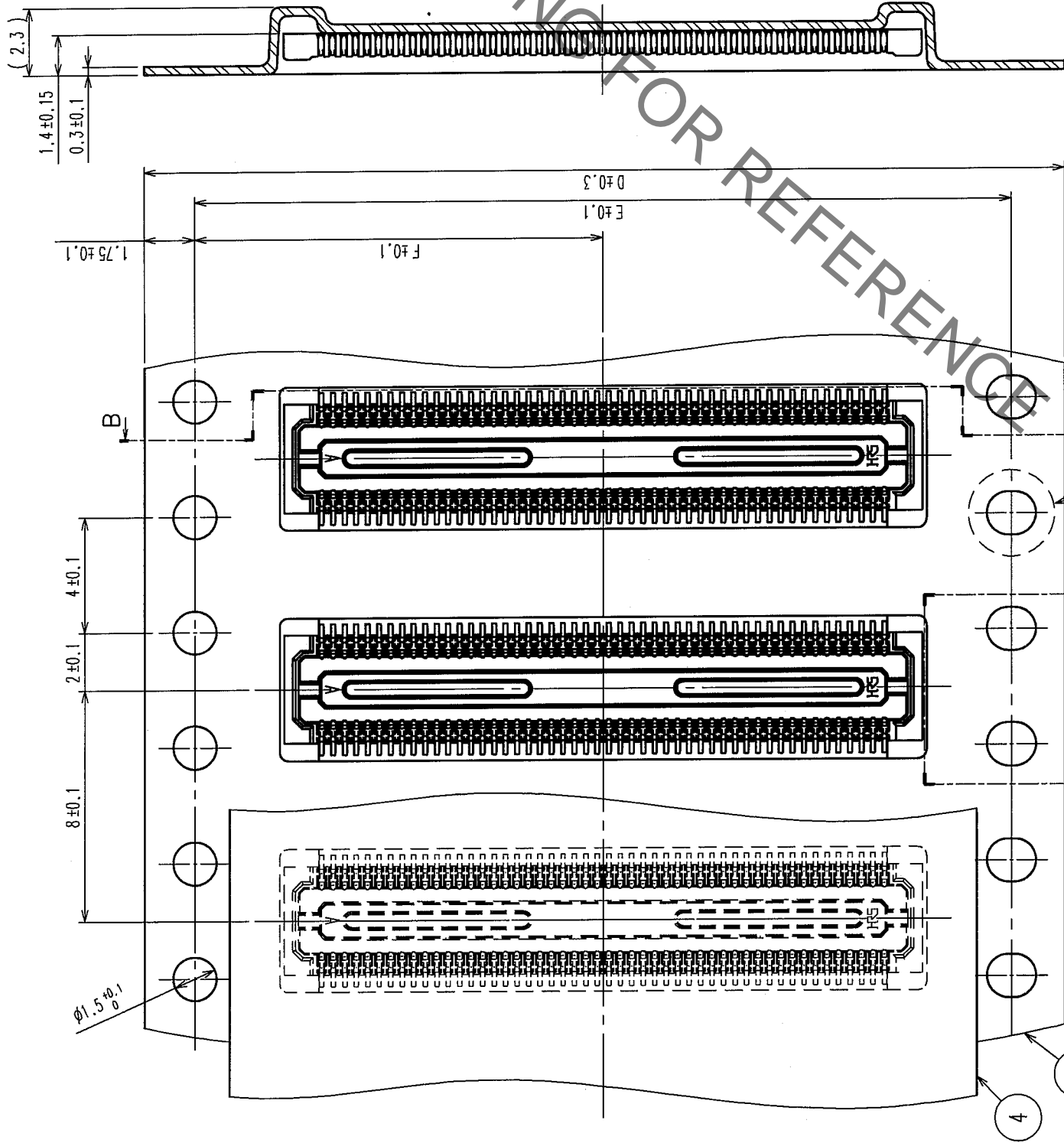
2

1

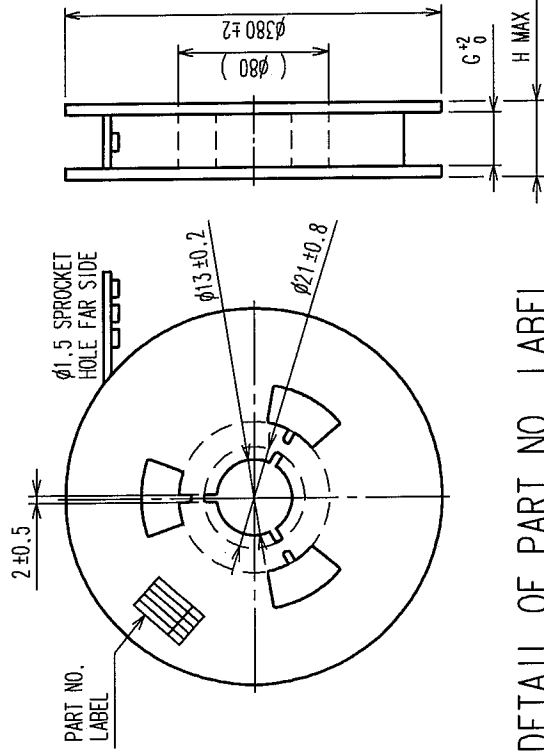
TO

COUNT	DESCRIPTION OF REVISIONS	BY	CHKD	DATE	COUNT	DESCRIPTION OF REVISIONS	BY	CHKD	DATE

B-B



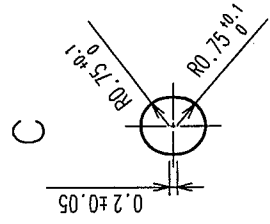
STYLE AND DIMENSION OF REEL (FREE)



DETAIL OF PART NO. LABEL

SUPPLIER	CL684-*****-82
QUANTITY	DF30FC-DS-0.4V(82)
PART NO.	1000個
CODE NO.	ヒロセ電機(株)
DATE OF MANUFACTURE	
生産月日	年 月 日
国番	CL684-*****-82
品名	DF30FC-DS-0.4V(82)
納入数量	1000個
納入者	ヒロセ電機(株)

PART NO.	D	E	F	G	H
DF30FC-80DS-0.4V(82)	CL684-1116-3-82	32	28.4	14.2	32.4
DF30FC-70DS-0.4V(82)	CL684-1115-0-82	24	-	11.5	24.4
DF30FC-60DS-0.4V(82)	CL684-1082-3-82	24	-	11.5	24.4
DF30FC-50DS-0.4V(82)	CL684-1114-8-82	24	-	11.5	24.4
DF30FC-40DS-0.4V(82)	CL684-1078-6-82	24	-	11.5	24.4
DF30FC-34DS-0.4V(82)	CL684-1113-5-82	16	-	7.5	16.4
DF30FC-30DS-0.4V(82)	CL684-1112-2-82	16	-	7.5	16.4
DF30FC-24DS-0.4V(82)	CL684-1111-0-82	16	-	7.5	16.4
DF30FC-22DS-0.4V(82)	CL684-1110-7-82	16	-	7.5	16.4
DF30FC-20DS-0.4V(82)	CL684-1109-8-82	16	-	7.5	16.4



D-D

DIRECTION OF UNREELING

CODE NO. (OLD)

DESIGNED

DRAWN

CHECKED

APPROVED

RELEASED

FORM NO. 229

TO									
----	--	--	--	--	--	--	--	--	--

DRAWING NO.

EDC3-303556-05

PART NO.

DF30FC-DS-0.4V(82)

CL684-*****-82

2