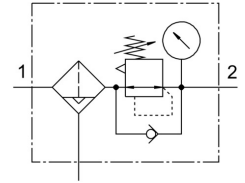


Filter regulator MS4-LFR-1/8-D6-CRV-AS

Part number: 529162

FESTO



Data sheet

Feature	Value
Size	4
For use in the food industry	See supplementary material information
Type code	MS4-LFR
Series	MS
Actuator lock	Rotary knob with detent can be closed with accessories
Mounting position	Vertical +/- 5°
Grade of filtration	5 µm
Condensate drain	Fully automatic
Design	Filter regulator with pressure gauge
Max. condensate volume	19 ml
Controller function	Outlet pressure constant With return flow function With secondary exhausting
Bowl guard	Plastic bowl guard
Symbol	00991587
Pressure gauge	with pressure gauge
Operating pressure	2 bar ... 12 bar
Pressure regulation range	0.3 bar ... 7 bar
Max. pressure hysteresis	0.25 bar
Standard nominal flow rate	900 l/min
Operating medium	Inert gas Compressed air as per ISO 8573-1:2010 [7:4:-]
Corrosion resistance class (CRC)	2 - Moderate corrosion stress
Storage temperature	-10 °C ... 60 °C
Air quality class at the output	Compressed air as per ISO 8573-1:2010 [6:4:4]
Temperature of medium	5 °C ... 60 °C
Ambient temperature	5 °C ... 60 °C
Product weight	275 g
Type of mounting	Front panel mounting Line installation With accessories Optionally:
Pneumatic connection 1	G1/8
Pneumatic connection 2	G1/8
Note on materials	RoHS-compliant
Material of sub-base	Die-cast aluminum

Feature	Value
Material of operator panel	PA POM
Seals material	NBR
Compressed air filter material	PE
Housing material	Die-cast aluminum
Diaphragm material	NBR
Material of bowl	PC
Separating disc material	POM