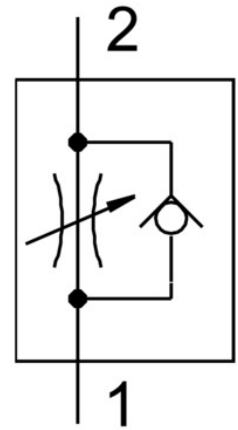


# One-way flow control valve GR-QS-4

Part number: 193967

FESTO



## Data sheet

Feature	Value
Type code	GR
Valve function	Flow control non-return function
Pneumatic connection 1	QS-4
Pneumatic connection 2	QS-4
Adjusting element	Knurled screw
Type of mounting	With accessories Optionally: With through-hole Front panel mounting
Standard nominal flow rate in flow control direction	110 l/min
Standard nominal flow rate in non-return direction	165 l/min
Operating pressure	0.2 bar ... 10 bar
Ambient temperature	-10 °C ... 60 °C
Housing material	PA-reinforced
Mounting position	Any
Symbol	00991453
Explosion prevention and protection	Zone 21 (ATEX) Zone 1 (ATEX) Zone 22 (ATEX) Zone 2 (ATEX) Observe the information on the certificate
Operating medium	Compressed air as per ISO 8573-1:2010 [7:4:4]
Information on operating and pilot media	Operation with oil lubrication possible (required for further use)
Temperature of medium	-10 °C ... 60 °C
Product weight	12 g
Note on materials	RoHS-compliant
Seals material	NBR
Releasing ring material	POM
Material of adjusting screw	High-alloy steel