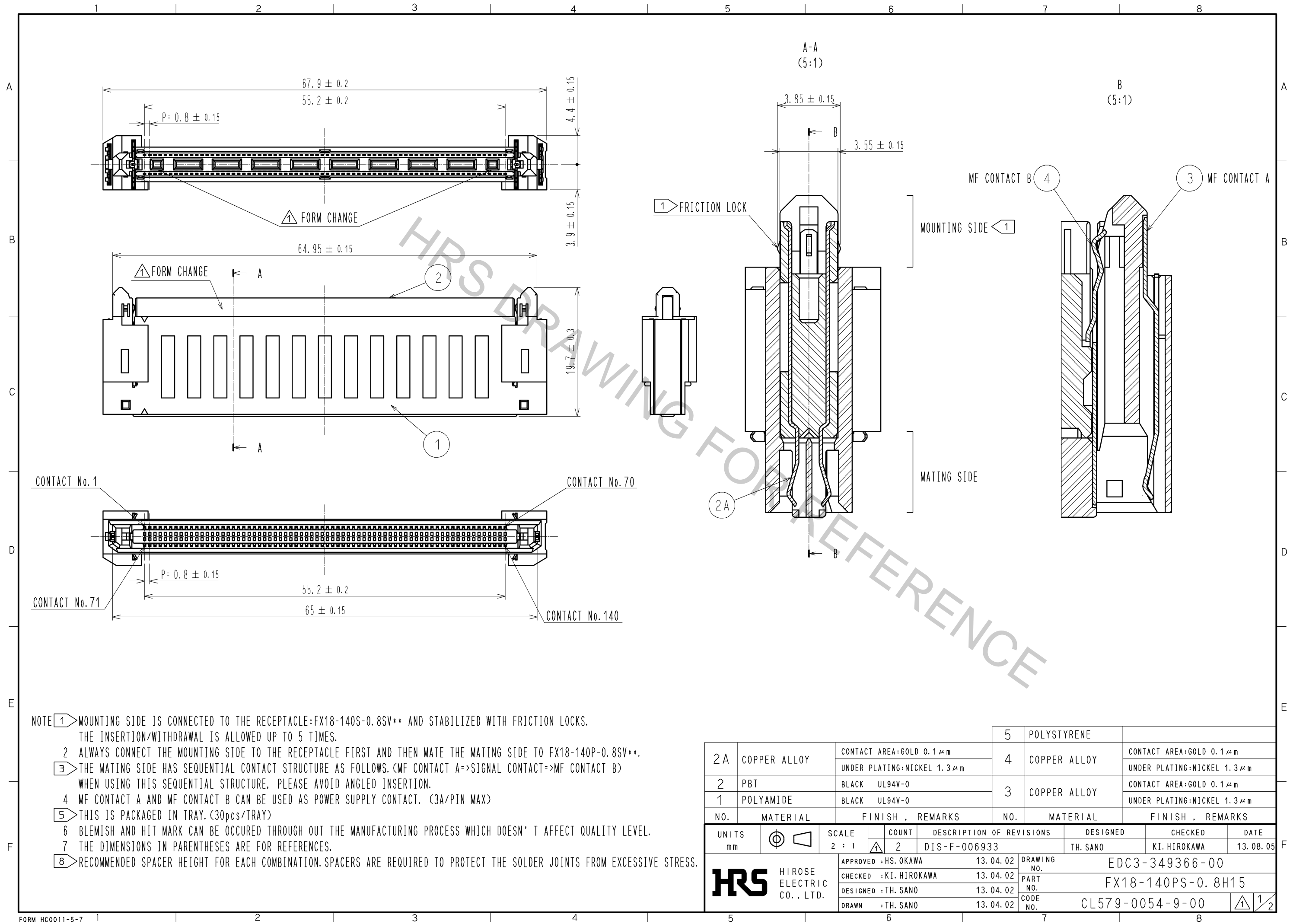


Oct.1.2018 Copyright 2018 HIROSE ELECTRIC CO., LTD. All Rights Reserved.
In case that the application demands a high level of reliability, such as automotive,
please contact a company representative for further information.



- NOTE 1 MOUNTING SIDE IS CONNECTED TO THE RECEPTACLE:FX18-140S-0.8SV** AND STABILIZED WITH FRICTION LOCKS.
THE INSERTION/WITHDRAWAL IS ALLOWED UP TO 5 TIMES.
2 ALWAYS CONNECT THE MOUNTING SIDE TO THE RECEPTACLE FIRST AND THEN MATE THE MATING SIDE TO FX18-140P-0.8SV**.
3 THE MATING SIDE HAS SEQUENTIAL CONTACT STRUCTURE AS FOLLOWS.(MF CONTACT A->SIGNAL CONTACT->MF CONTACT B)
WHEN USING THIS SEQUENTIAL STRUCTURE, PLEASE AVOID ANGLED INSERTION.
4 MF CONTACT A AND MF CONTACT B CAN BE USED AS POWER SUPPLY CONTACT. (3A/PIN MAX)
5 THIS IS PACKAGED IN TRAY.(30pcs/TRAY)
6 BLEMISH AND HIT MARK CAN BE OCCURED THROUGH OUT THE MANUFACTURING PROCESS WHICH DOESN' T AFFECT QUALITY LEVEL.
7 THE DIMENSIONS IN PARENTHESES ARE FOR REFERENCES.
8 RECOMMENDED SPACER HEIGHT FOR EACH COMBINATION. SPACERS ARE REQUIRED TO PROTECT THE SOLDER JOINTS FROM EXCESSIVE STRESS.

2A		COPPER ALLOY	CONTACT AREA:GOLD 0.1μm UNDER PLATING:NICKEL 1.3μm	5	POLYSTYRENE		
2		PBT	BLACK UL94V-0	4	COPPER ALLOY	CONTACT AREA:GOLD 0.1μm UNDER PLATING:NICKEL 1.3μm	
1		POLYAMIDE	BLACK UL94V-0	3	COPPER ALLOY	CONTACT AREA:GOLD 0.1μm UNDER PLATING:NICKEL 1.3μm	
NO.	MATERIAL		FINISH , REMARKS	NO.	MATERIAL	FINISH , REMARKS	
UNITS mm			SCALE 2 : 1	COUNT 2	DESCRIPTION OF REVISIONS		DESIGNED TH. SANO
					DIS-F-006933		CHECKED KI. HIROKAWA
					APPROVED : HS. OKAWA 13. 04. 02		DATE 13. 08. 05
					CHECKED : KI. HIROKAWA 13. 04. 02		
					DESIGNED : TH. SANO 13. 04. 02		
					DRAWN : TH. SANO 13. 04. 02		
					DRAWING NO. EDC3-349366-00		
					PART NO. FX18-140PS-0.8H15		
					CODE NO. CL579-0054-9-00		

Oct.1.2018 Copyright 2018 HIROSE ELECTRIC CO., LTD. All Rights Reserved.
In case that the application demands a high level of reliability, such as automotive,
please contact a company representative for further information.

